

2026 SS 

# Yoga Wear

COMPREHENSIVE  
ANALYSIS



BENCHMARK  
BRAND

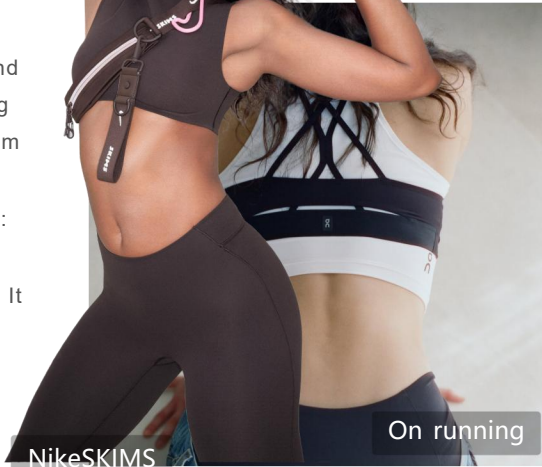
# Yogawear & Activewear

In recent years, yogawear and activewear has expanded beyond training settings, gradually integrating into commuting, social occasions, and everyday wear alongside the rise of the Wellness lifestyle and the Athflow trend. Brands such as Alo Yoga, Lululemon, On Running, Nike, and SKIMS continue to elevate activewear toward body sculpting, emotional well-being, and fashion expression—transforming yoga apparel from purely functional sportswear into a key category that combines performance, aesthetic appeal, and lifestyle identity.

This report focuses on the developmental dynamics of benchmark brands in the yoga and fitness apparel sector, systematically mapping the evolution of yoga and fitness apparel—from functional training gear to versatile multi-scenario wear—across four stylistic directions: mind-body wellness, urban intelligence, professional training, and understated luxury. It aims to provide insights for future product development and trend planning.



NikeSKIMS



NikeSKIMS

On running



On running



NikeSKIMS

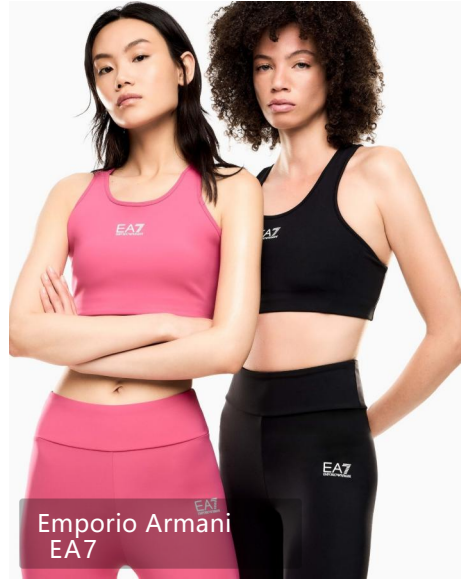


Alo yoga

# CONTENTS



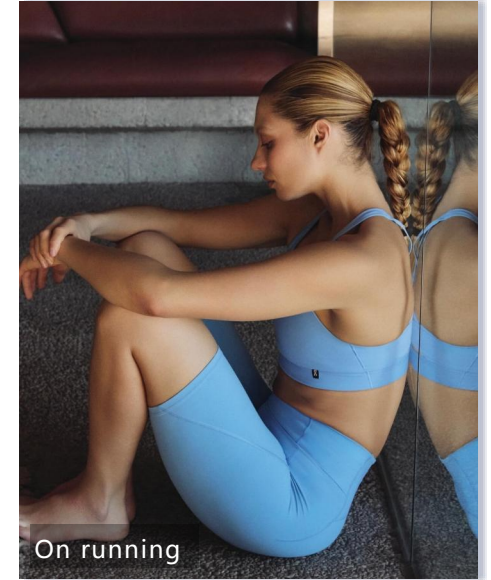
**Part 1 – Key Styles**



**Part 2 – Brand Recommendations**



**Part 3 – Design Analysis**



**Part 4 – Summary**

This report examines the development dynamics of the yoga and activewear market. Through analysis of key styles, benchmark brand recommendations, design trend insights, and forward-looking extensions, it systematically outlines innovative applications of sportswear in functional training, body shaping, and lifestyle scenarios, providing trend references for future product development.

# PART 1-KEY STYLES

The four key styles of yoga, fitness, and athletic apparel revolve around emotional wellness, urban living, professional training, and fashion elevation—reflecting a continuous expansion from dedicated sports settings into diverse lifestyle contexts. Mind-body wellness emphasizes comfort, natural colors, and emotional value to meet consumers' needs for health and balance; Urban intelligence integrates sports and commuting scenarios through minimalist design and functional layering, adapting seamlessly to all-day lifestyles; Professional training focuses on structural support, high-performance fabrics, and ergonomic design to enhance athletic performance and body-shaping experiences; casual luxury combines quiet luxury aesthetics with sporty trends, advancing yoga apparel into the premium lifestyle domain through refined silhouettes and meticulous detailing.



Alo yoga

**Mind-BodyWellness**



adidas x SAMUEL GUI YANG

**UrbanIntelligence**



ASRV

**Professional Training**



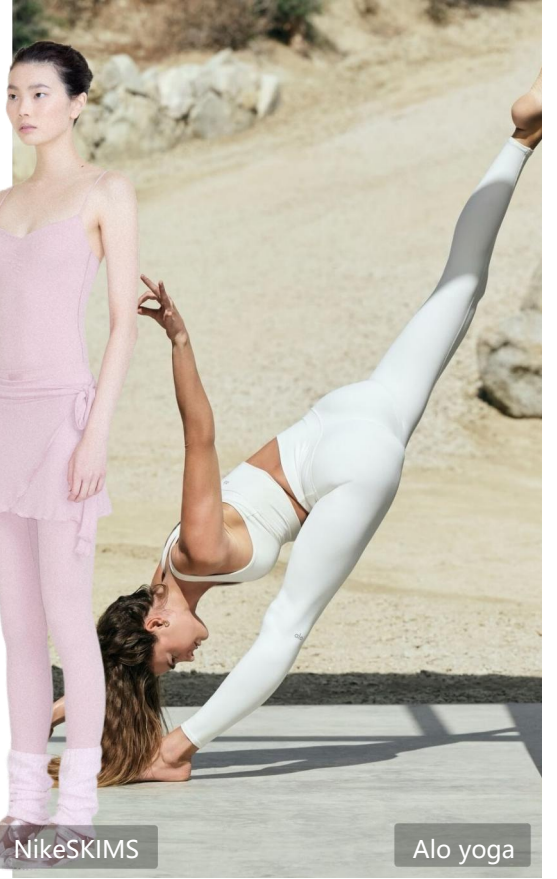
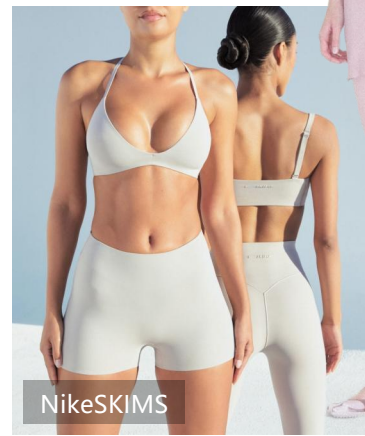
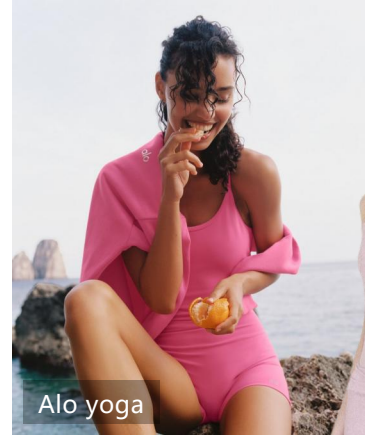
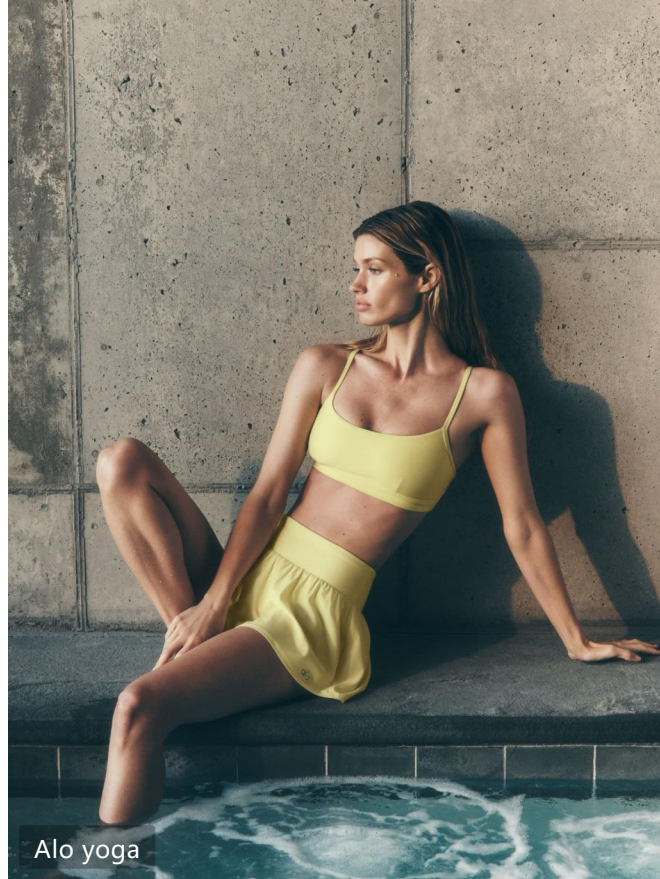
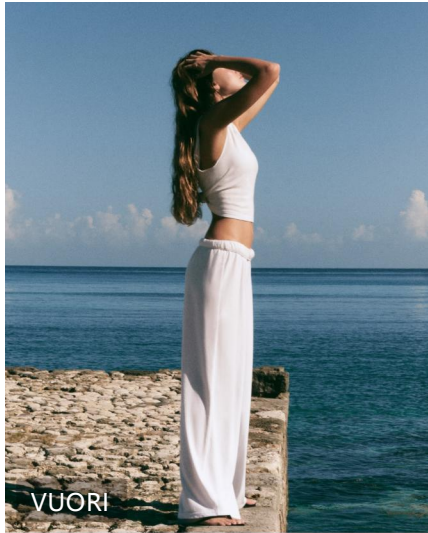
Alo yoga

**Casual Luxury**

# Mind-Body Healing

## Key Style

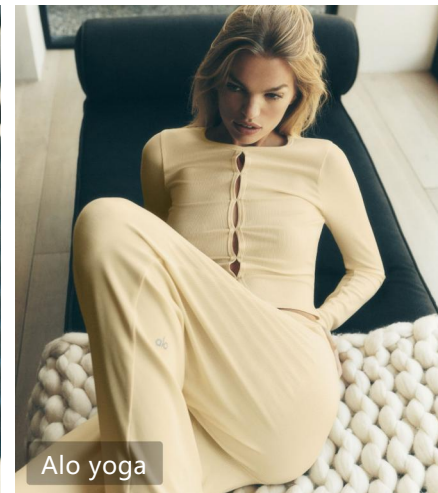
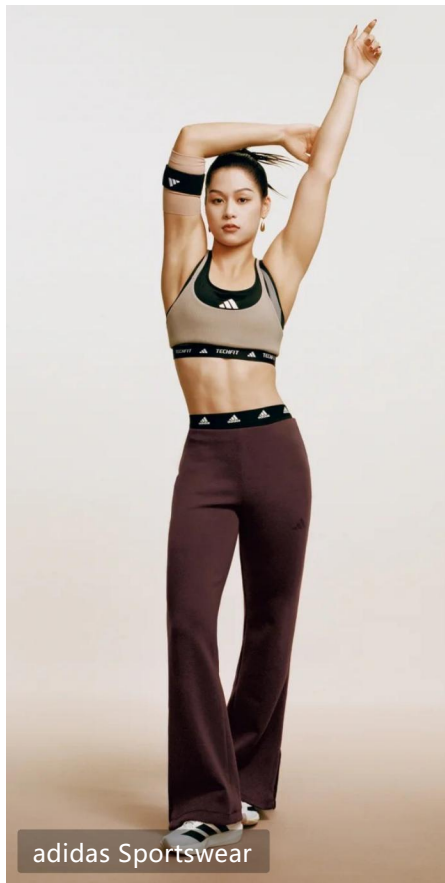
Centered around yoga, meditation, and light exercise scenarios, this style emphasizes soft, skin-friendly fabrics, naturally healing colors, and unrestricted wearing comfort. The design language is simpler and softer, featuring relaxed silhouettes, seamless construction, bare-skin-feel fabrics, and comfortably enveloping structures—meeting consumers' needs for emotional healing and mind-body balance. This direction is ideal for developing product lines targeting yoga practice, home recovery, light outdoor activities, and the Wellness lifestyle.



# Urban Intelligence

## Key Style

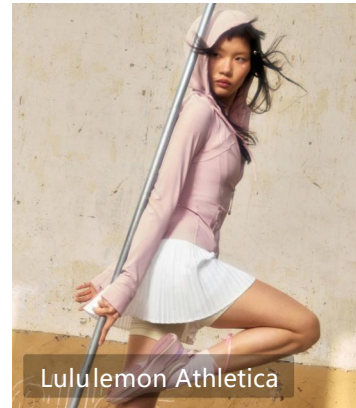
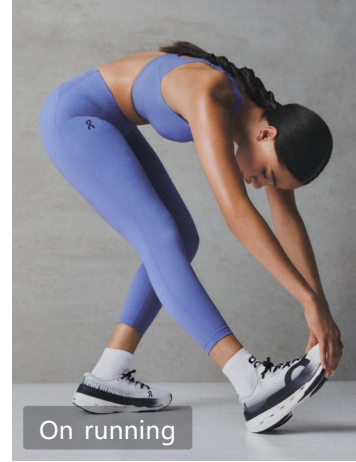
Focuses on seamless transitions between sports and commuting scenarios, emphasizing minimalist design, functional upgrades, and coordinated outfitting. Achieves enhanced daily wearability and fashion appeal through clean tailoring, lightweight fabrics, multi-scenario combinations, and the use of urban neutral tones. This direction is ideal for developing commuter-sports sets, light-business sportswear pieces, and Studio-to-Street urban lifestyle products.



## Professional Training

### Key Style

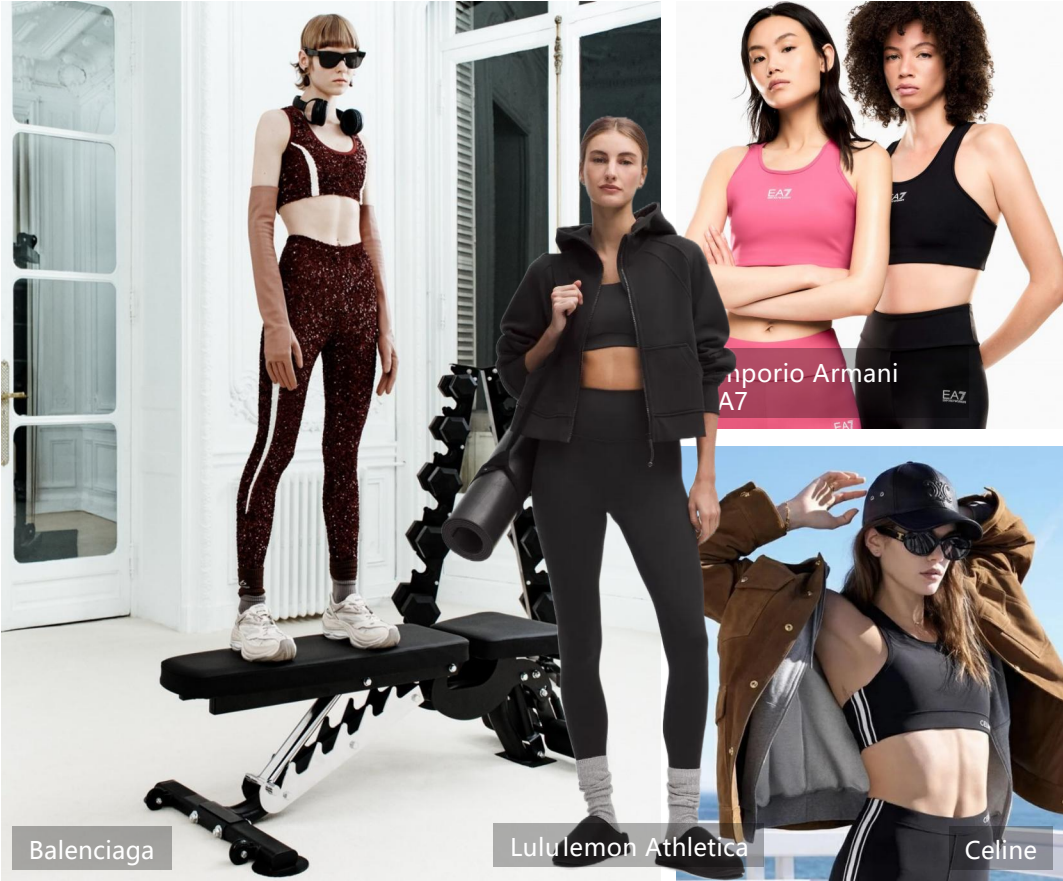
Designed for advanced yoga, Pilates, and comprehensive fitness scenarios, emphasizing high elasticity and support, shaping structure, breathability, moisture-wicking performance, and ergonomic design. The design language is more professional and streamlined, enhancing athletic performance and body control through compression fabrics, zone-specific support, seamless construction, and functional details. This direction is ideal for developing professional training apparel, shaping sets, and high-performance sportswear collections.



# Casual Luxury

## Key Style

Blending quiet luxury aesthetics with sportswear trends, this direction emphasizes premium-quality fabrics, refined silhouettes, and fashion-oriented expression. Designs focus on asymmetrical structures, sculptural tailoring, meticulous craftsmanship, and an overall sense of elevated quality—elevating activewear beyond traditional training contexts. This theme is ideal for developing high-end yoga collections, social-sport outfits, and light-luxury lifestyle products.



Balenciaga

Lululemon Athletica

Celine



Oysho Sport



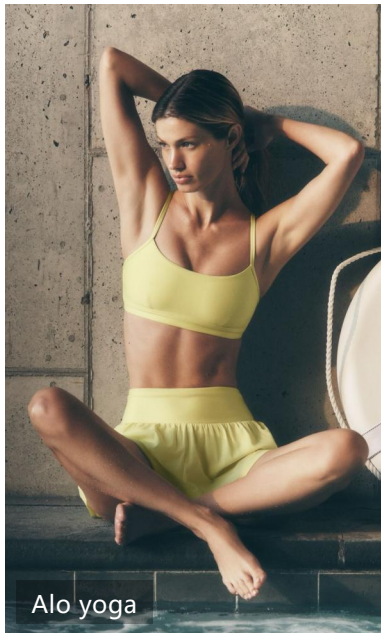
P.E Nation



Emporio Armani EA7

# PART 2-BRAND RECOMMENDATIONS

This section features five representative yoga and activewear brands: Alo Yoga, Oysho Sport, NikeSKIMS, ASRV, and Lululemon—covering core themes including mind-body wellness, urban fitness, professional training, and premium fashion. As the Wellness lifestyle continues to gain momentum, yoga and activewear is evolving from specialized training gear into a multi-scenario category that integrates shaping functionality, emotional value, and fashion expression. Specifically, Alo Yoga emphasizes the fusion of yoga culture and an upscale lifestyle; Oysho Sport focuses on minimalist urban aesthetics and comfortable movement experiences; NikeSKIMS centers on body sculpting and feminine athletic aesthetics; ASRV highlights high-performance training and functional sport attributes; and Lululemon builds a globally leading athletic lifestyle ecosystem through professional technical fabrics and scenario-driven products.



Alo yoga

**Alo yoga**



Oysho Sport

**Oysho sport**



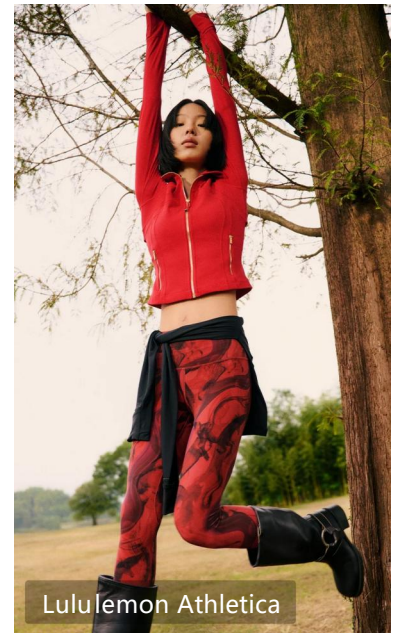
NikeSKIMS

**NikeSKIMS**



ASRV

**ASRV**

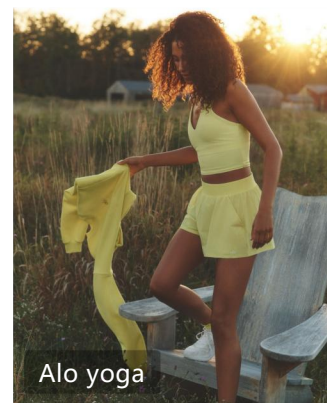
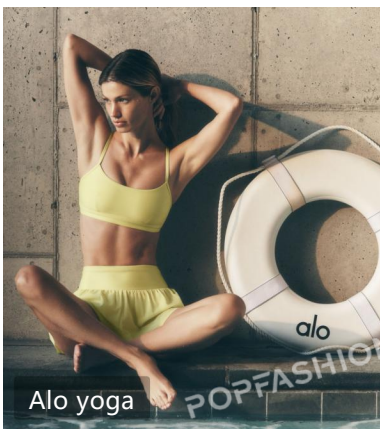


Lululemon Athletica

**Lululemon**

Brand Recommendation

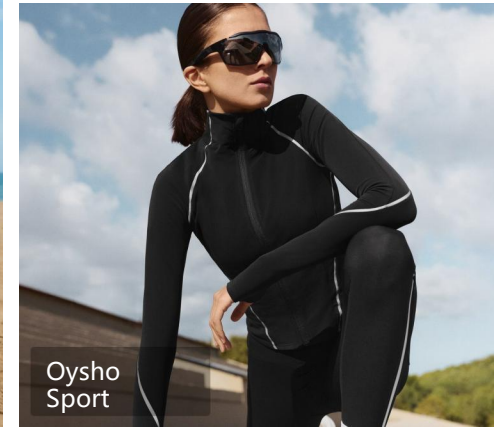
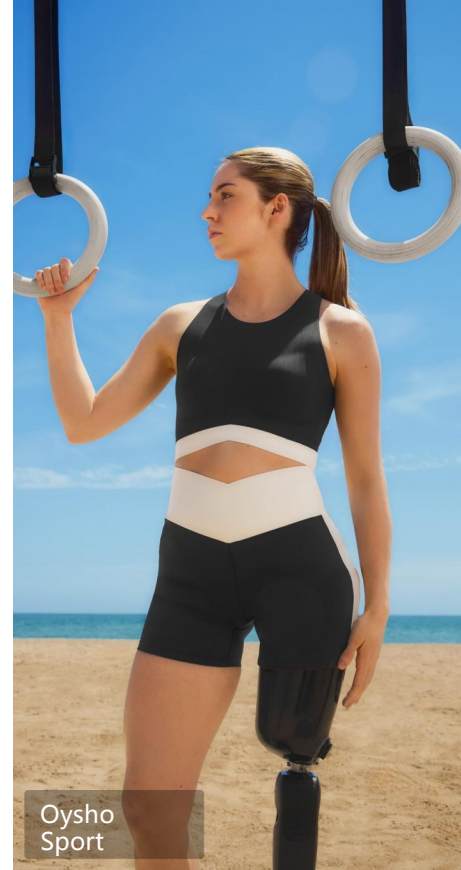
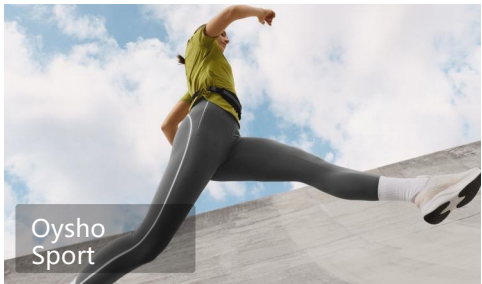
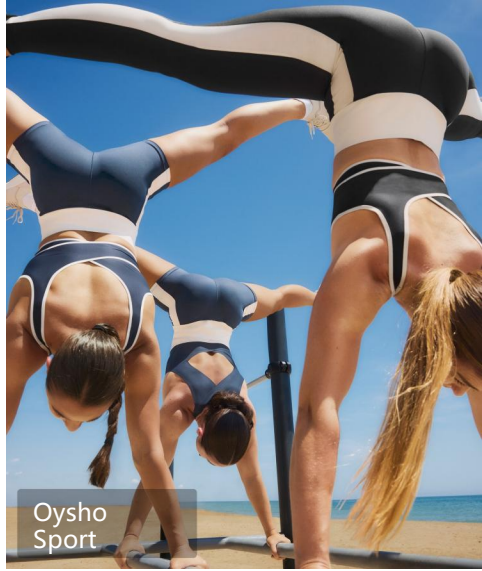
through sculptural silhouettes, bare-skin-feel fabrics, and sophisticated neutral tones. Recent collections place greater emphasis on the Studio-to-Street styling concept, promoting the evolution of yoga apparel into high-end lifestyle wear through one-pieces, flared pants, and coordinated sets.



# Oysho sport

## Brand Recommendation

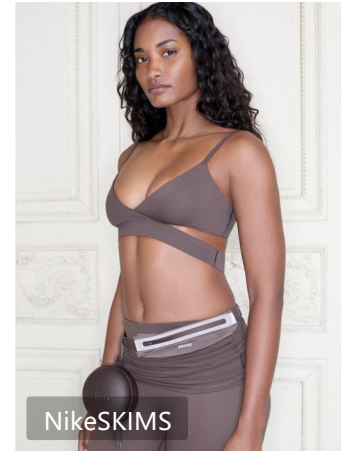
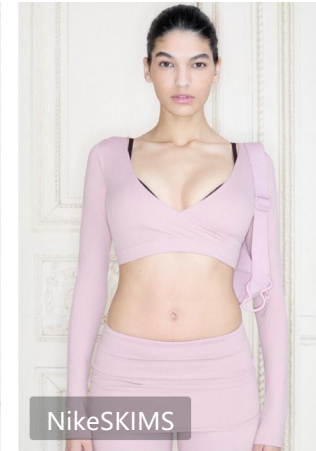
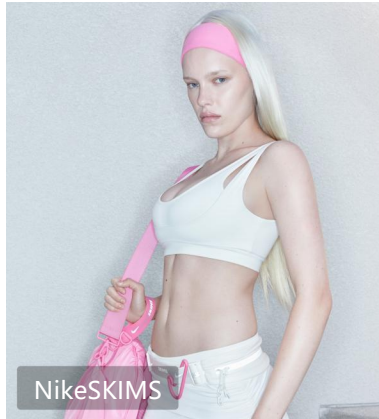
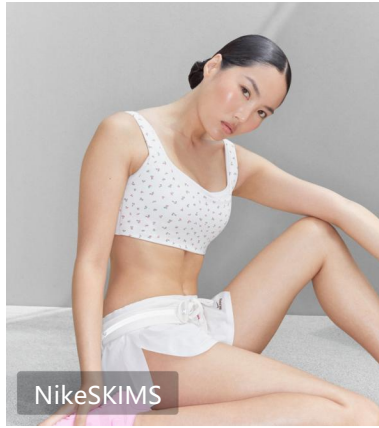
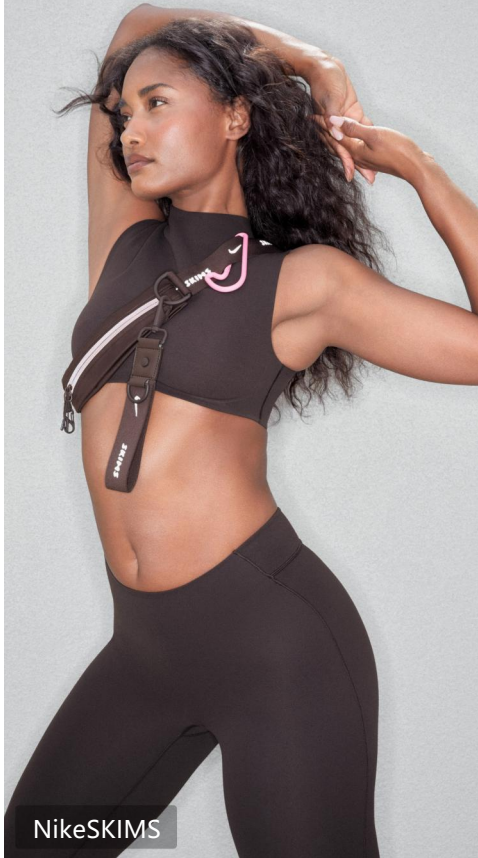
Oysho Sport has continuously strengthened its professional sports segment in recent years, with products covering yoga, running, training, and outdoor activities. Garment design centers on minimalist silhouettes and comfort, utilizing lightweight fabrics, seamless construction, and low-saturation colors to define an urban sportswear aesthetic. The new collection places greater emphasis on blending sports and commuting scenarios, balancing functional performance with everyday wearability.



# NikeSKIMS

## Brand Recommendation

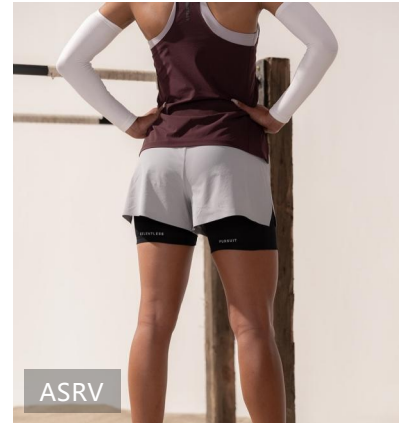
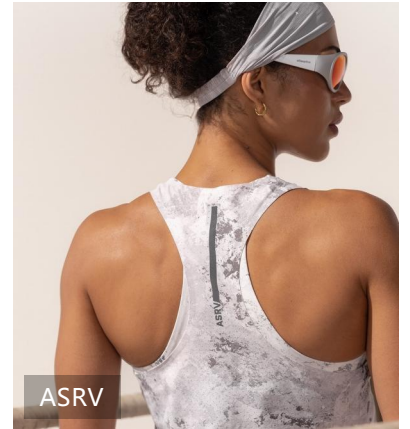
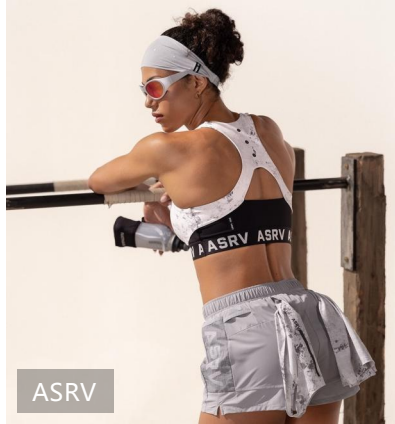
NikeSKIMS focuses on the women's athletic market, integrating sport technology with body-shaping concepts as its core direction. Its product line emphasizes fit and support, curve enhancement, and comfortable wearability, meeting diverse training needs through high-stretch fabrics, shaping structures, and clean silhouettes. Its launch further advances the trend of athletic apparel that combines feminine aesthetics with professional performance.



# ASRV

## Brand Recommendation

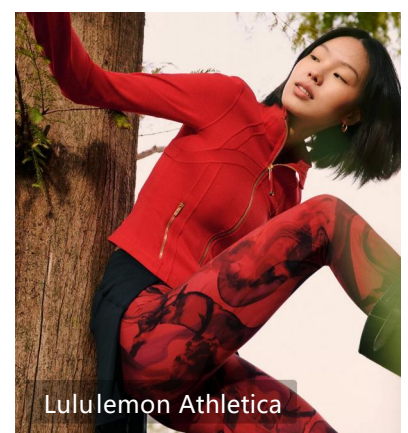
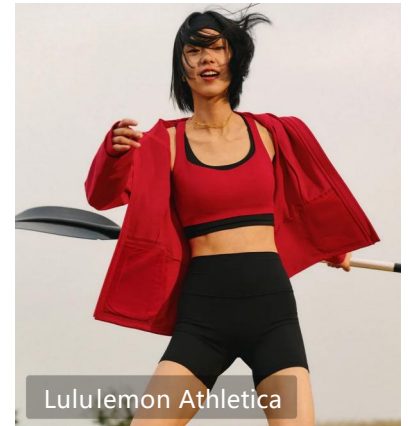
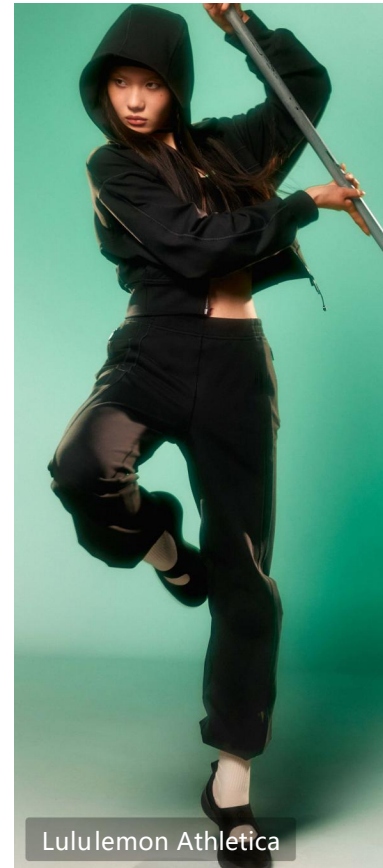
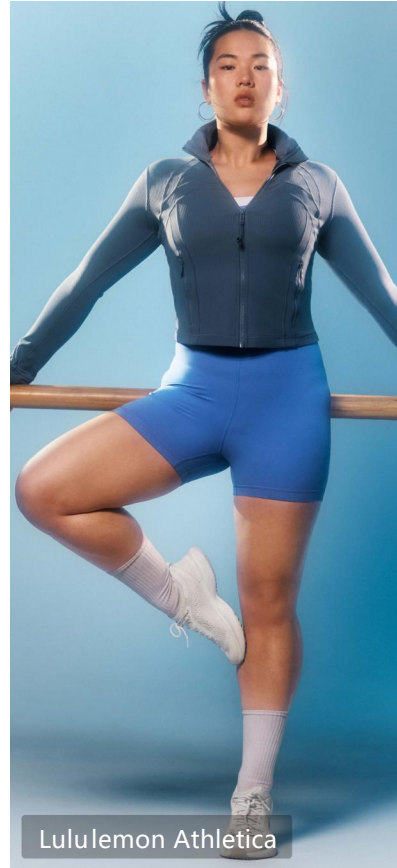
ASRV, an emerging high-performance training brand, consistently innovates around functional sports and professional training scenarios. Its products emphasize ergonomic tailoring, abrasion-resistant fabrics, and functional design details—enhancing training performance through 3D pockets, laser-perforated ventilation, and modular construction. The overall aesthetic balances futuristic appeal with professional attributes, establishing ASRV as a key representative in the premium sports consumer market.



# Lululemon

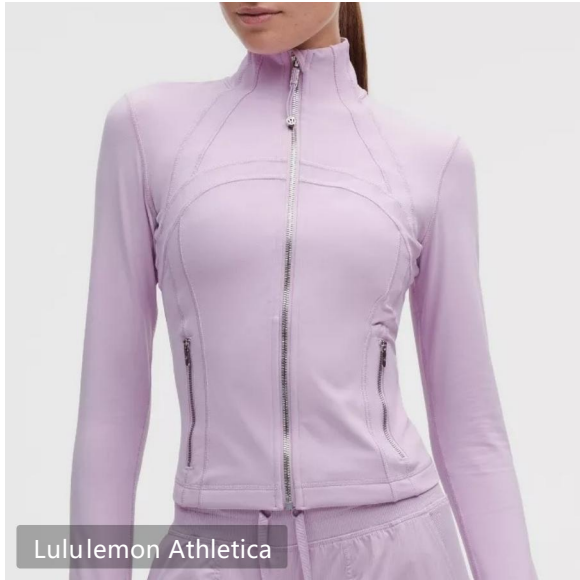
## Brand Recommendation

Lululemon continues to lead the global yoga and fitness apparel market, offering products for yoga, training, running, and lifestyle scenarios. The latest collection focuses on enhanced comfort and functional upgrades, reinforcing its advantages in bare-skin-like wearability and professional support through core products such as Align and Wunder Train, while also advancing athletic apparel toward all-day, multi-scenario lifestyle integration.



# PART 3-DESIGN ANALYSIS

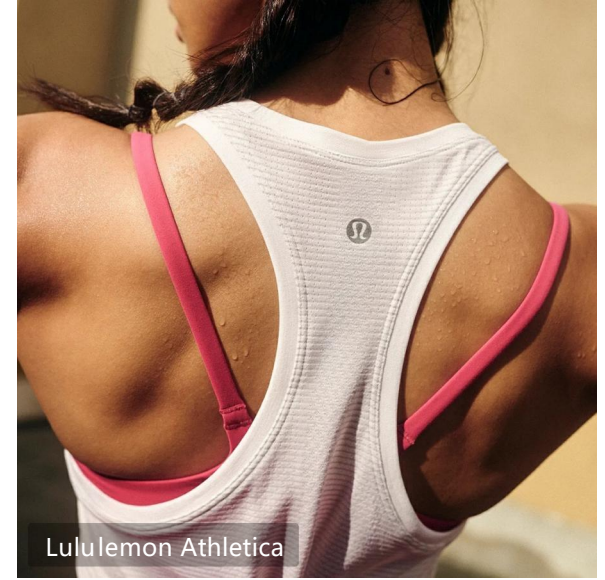
The Design Analysis section approaches from a product development perspective, analyzing the core design directions of contemporary yoga and activewear across three dimensions: key items, key details, and key techniques. As the Wellness lifestyle, the Pilates boom, and the fashion-forward trend in sportswear continue to evolve, yoga apparel is expanding beyond professional training gear into a series of products that combine body-sculpting functionality, aesthetic expression, and versatility across multiple occasions. In recent years, sculptural vests, flared yoga pants, Pilates one-pieces, and lightweight outerwear have drawn sustained attention; meanwhile, asymmetrical designs, V-shaped butt-lifting seams, refined edge binding, and laser-perforated detailing have become important directions for brands to enhance product distinctiveness and professional credibility.



**Key Items**



**Key Details**

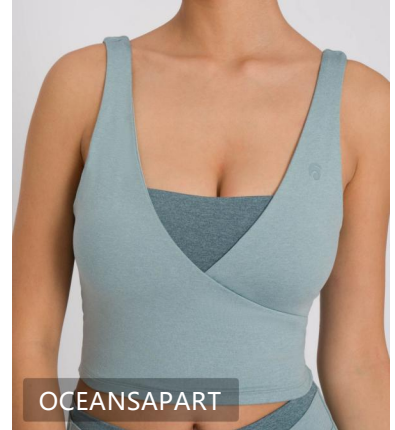
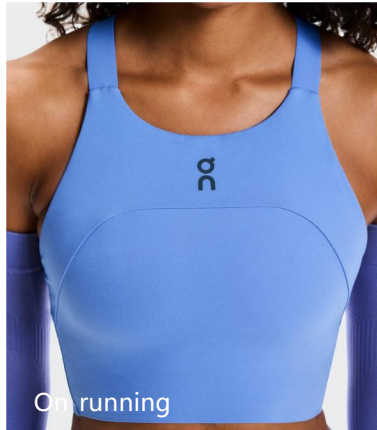
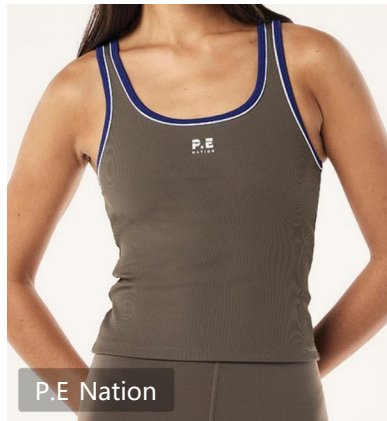
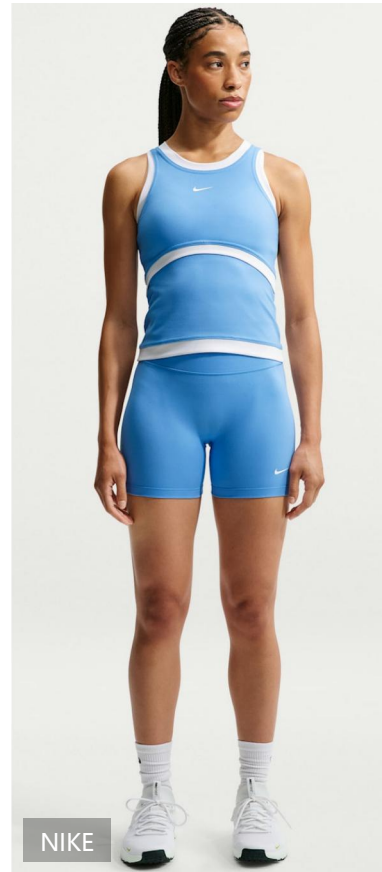
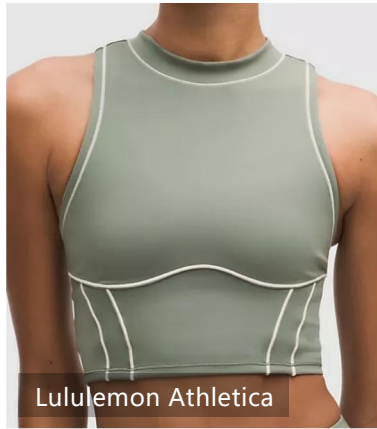
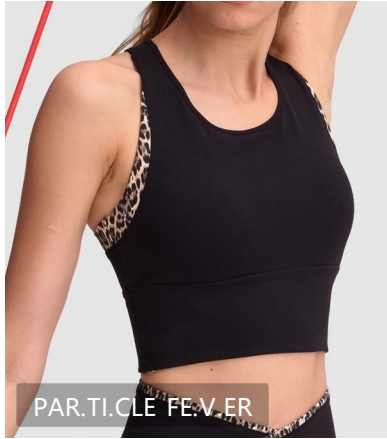


**Key Crafts**

# Active Tank Top

## Key Item

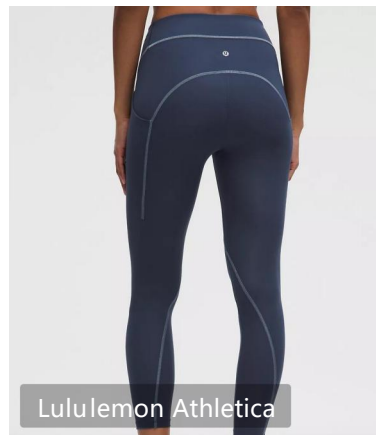
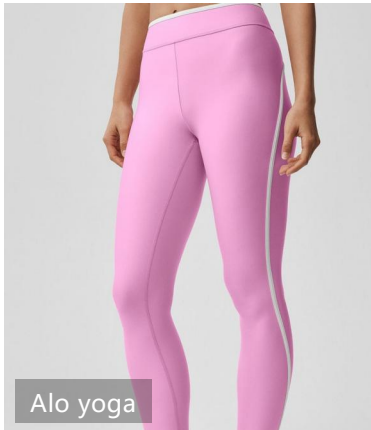
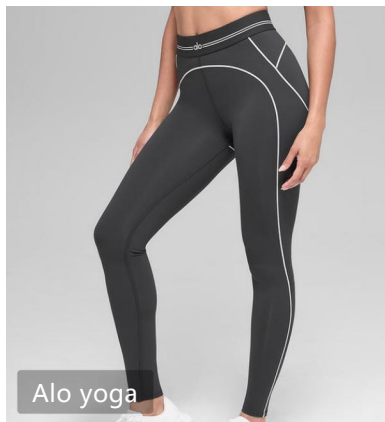
The active tank top is the most iconic core piece in yoga and activewear, combining functional training performance with fashionable styling. In recent new product developments, integrated molded cups, bare-skin-feel fabrics, high elasticity with supportive structure, and quick-dry performance have become key R&D directions—suitable for yoga, Pilates, and general training scenarios. Design differentiation can be achieved through U-neck or V-neck silhouettes, back-enhancing structures, color-blocking panels, cropped proportions, or body-contouring cuts—balancing body sculpting and everyday wearability.



# Shaping Leggings

Shaping leggings are the most commercially established key item in today's yoga market, emphasizing comfort, snug fit, and body contour optimization. Recent seasons focus more on high-waisted construction, bare-skin elasticity, zone-specific support, and front-seamless design to enhance athletic performance and wearability. Design features may include V-shaped waistbands, butt-lifting cuts, panelled seam lines, and flared leg silhouettes, meeting demands across training, commuting, and lifestyle scenarios.

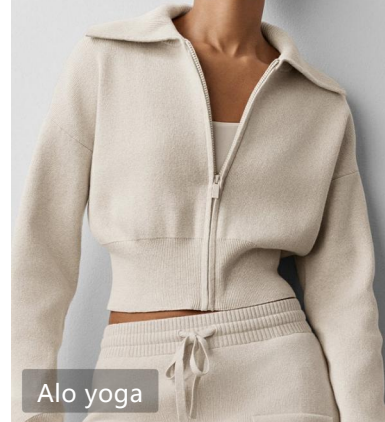
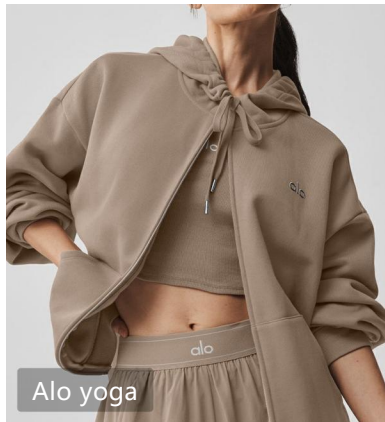
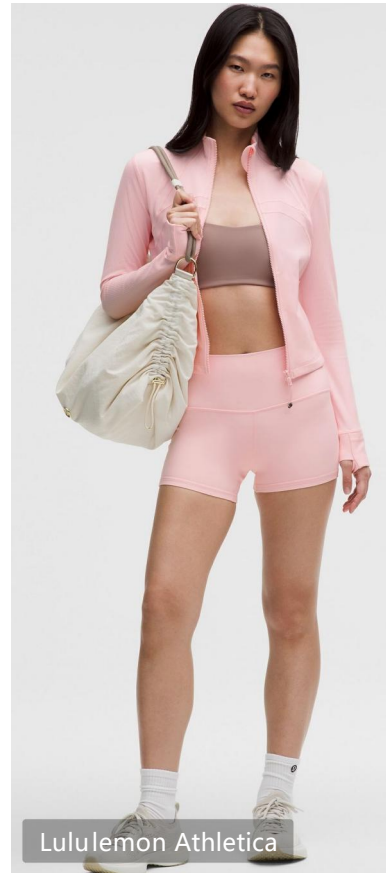
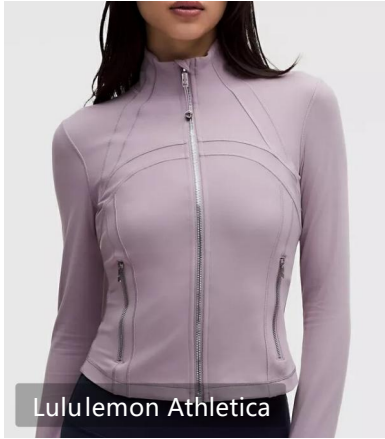
## Key Item



# Active Jacket

## Key Item

Active jackets are increasingly becoming an essential item extending the yoga apparel category, meeting needs for pre- and post-workout wear as well as everyday styling. New product development focuses more on lightweight fabrics, wind resistance, breathable construction, and comfortable stretch, making them suitable for multi-scenario wear. Design features such as stand-up collars, slim silhouettes, thumb loops, functional zippers, and paneling details further enhance their urban sport aesthetic.



# Sport Skirt

## Key Item



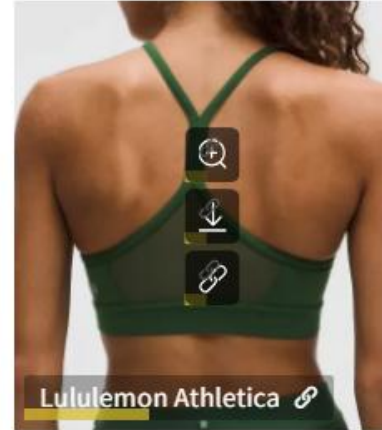
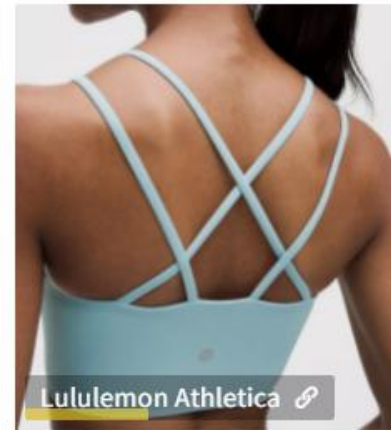
# Bodysuits

Bodysuits have become a key growth item in the Pilates and premium yoga markets in recent years, offering styling. New product development focuses on high-stretch fabrics, seamless construction, and enhanced bo

## Back Design

As the trend of wearing activewear as outerwear continues to grow, back design has become a key visual fo such as crisscross straps, cut-out structures, and geometric paneling enhance the expression of body contou support—achieving an optimal balance between performance and aesthetics. Design development may incl multiple crisscross patterns, and multi-material patchwork to elevate product distinctiveness and fashion a

### Key Details





## About Us.

- WENS FASHION founded in year 2007 ,is a leading international trading company with a rich history and a global footprint.We offer One-stop Purchase Services including marketresearch,OEM/ODM service,product sourcing, logistics,customs clearance, and post-sales support. Our team of experienced professionals is dedicated to providing personalized attention and tailored solutions to meet the unique needs of each client.
- **Fashion trend:**Meanwhile, we continuously increase investment in research and development, introduce advanced production technologies and design concepts, and keep our products always at the forefront of fashion.
- **Environmental protection concept:**We also attach great importance to environmental protection and sustainable development, actively adopt sustainable and recycled materials, and actively promote green production and the implementation of social responsibilities.