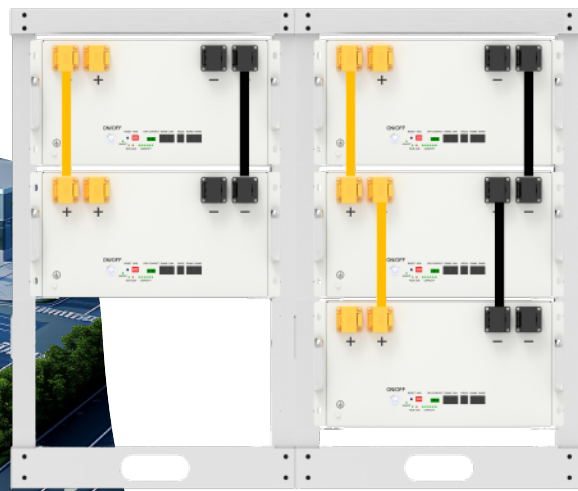


OMS-71K280

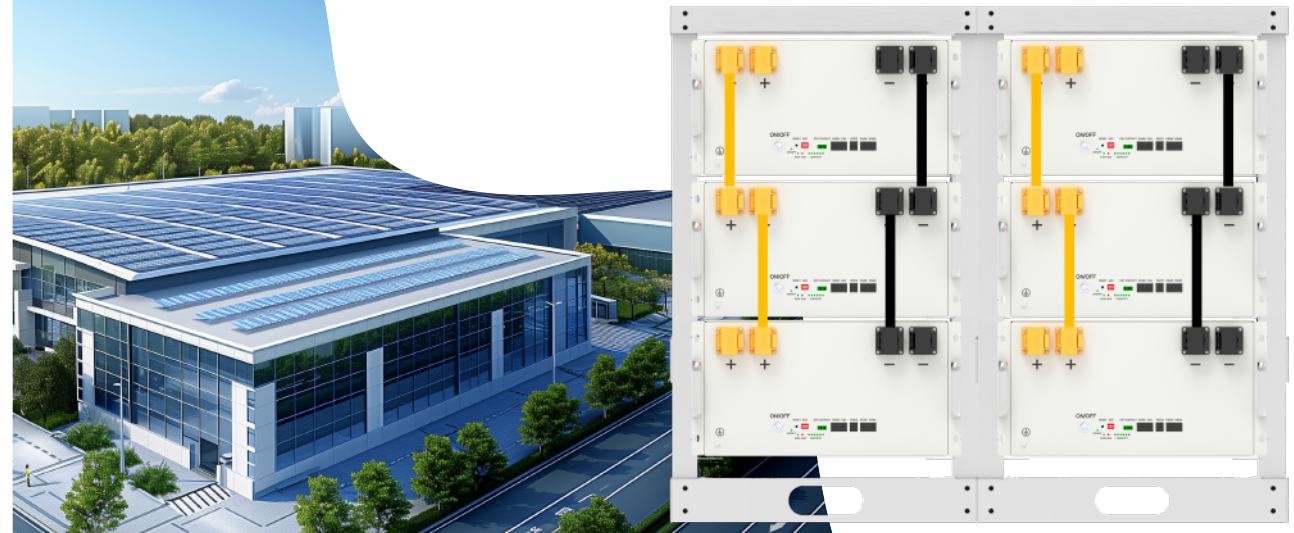
Rack Module Low voltage ess



MODEL	OMS-71K
Product	51.2V280AH*5
Nominal Voltage	DC51.2V
Nominal Capacity	280AH*5
Dimension mouldle(mm)	483*790*244*5
Dimension RACK(mm)	600*550*912
Weight(kg)	675KG
Specifications	PARAMETER
Nominal Voltage (V)	51.2
Nominal Capacity (KWh)	71.68
Discharge Cut-off Voltage (V)	40
Charge Cut-off Voltage (V)	56.8
Recommend Charge/Discharge Current (A)	450
Max Charge/Discharge Current(A)	500
Communicaiton	RS485/RS232/CAN
Working Temperature	0°C~50°C Charge -10°C ~50°C Discharge
Transport or Storage Temperature Range	20°C~60°C
Certification	CE/IEC/UL/UN38.3/MSDS
Design Life	15years+
Cycle Life	(0.5C/0.5C-80% DOD) >6000 times
Parallel Function	Support 10 units in Parallel
Certification	UN38.3/MSDS/ROHS

OMS-86K280

Rack Module Low voltage ess



MODEL	OMS-86K
Product	51.2V280AH*6
Nominal Voltage	DC 51.2V
Nominal Capacity	280AH*6
Dimension mouldle(mm)	483*790*244*6
Dimension RACK(mm)	600*550*1004
整机重量 Weight(kg)	810KG
Specifications	PARAMETER
Nominal Voltage (V)	51.2
Nominal Capacity (KWh)	86.016
Discharge Cut-off Voltage (V)	40
Charge Cut-off Voltage (V)	56.8
Recommend Charge/Discharge Current (A)	450
Max Charge/Discharge Current(A)	500
Communicaiton	RS485/RS232/CAN
Working Temperature	0°C~50°C Charge -10°C ~50°C Discharge
Transport or Storage Temperature Range	20°C~60°C
Certification	CE/IEC/UL/UN38.3/MSDS
Design Life	15years+
Cycle Life	(0.5C/0.5C-80% DOD) >6000 times
Parallel Function	Support 10 units in Parallel
Certification	UN38.3/MSDS/ROHS