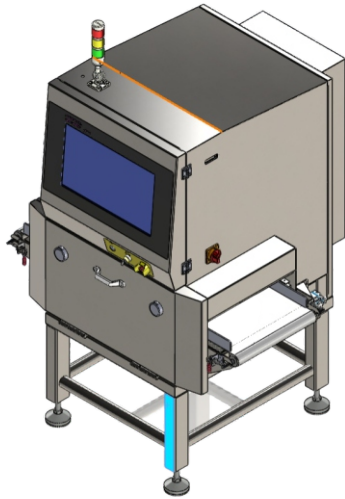


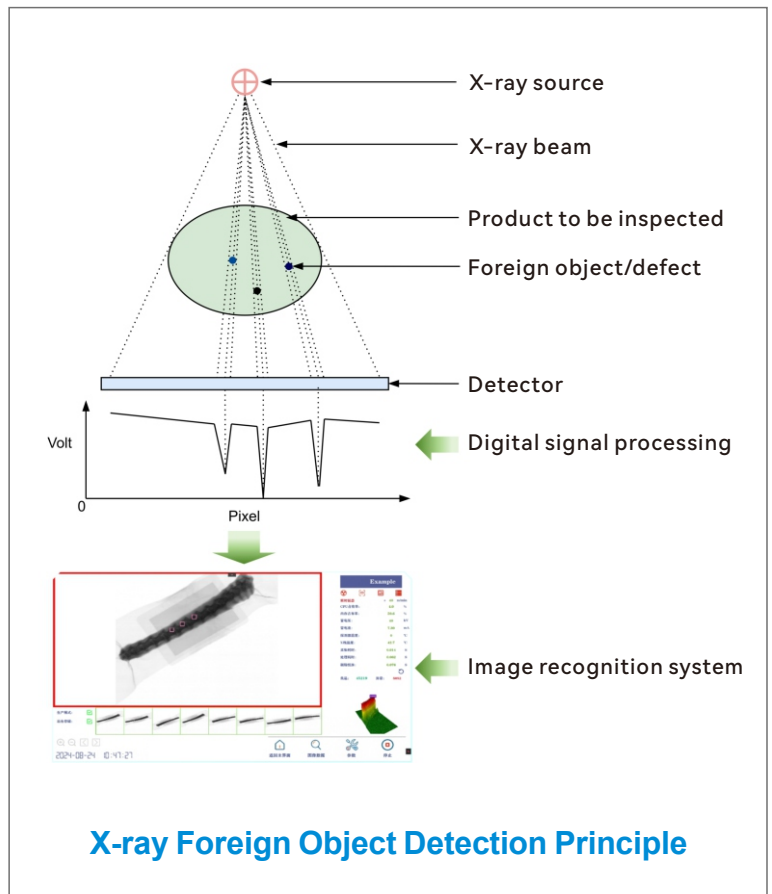
▶ X-RAY FOREIGN OBJECT DETECTION MACHINE



- ✔ Online detection of foreign objects, shapes, material composition, and packaging integrity in packaged, bulk, and bottled food or pharmaceuticals;
- ✔ It can detect a variety of foreign objects, including metals, glass, ceramics, hard plastics, bones, resins, shells, and pebbles;
- ✔ It is unaffected by temperature, humidity, salt content, or packaging materials such as aluminum foil, and features high precision and high reliability.

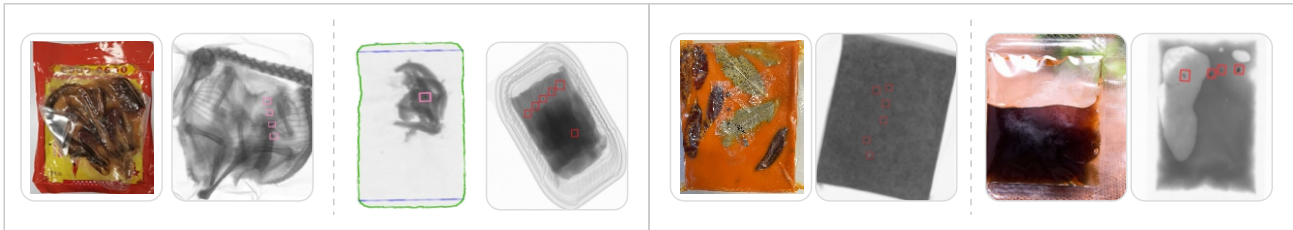
DETECTION RANGE

- Bulk foreign object detection + fruit pit detection;
- Dual-energy detection employs a dual-flow neural network to achieve deep AI fusion;
- Detects various forms of food or medicine, including packaged, bulk, and bottled products;
- Missing item detection;
- Foreign object detection in packaged food;
- Foreign object detection in desiccants;
- Aquatic product inspection;
- Detection of leakage from plastic packaging seals.

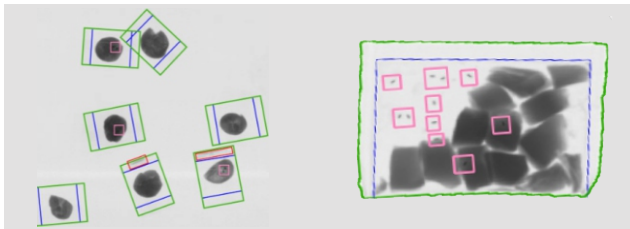


Application Examples

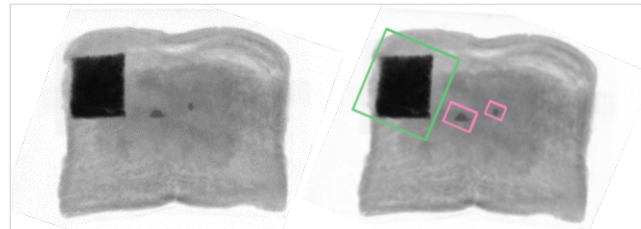
Foreign object detection in plastic packaging



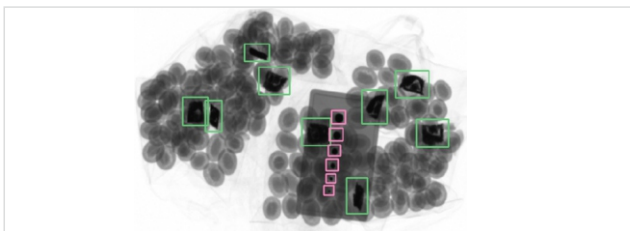
Fruit pit + foreign object detection



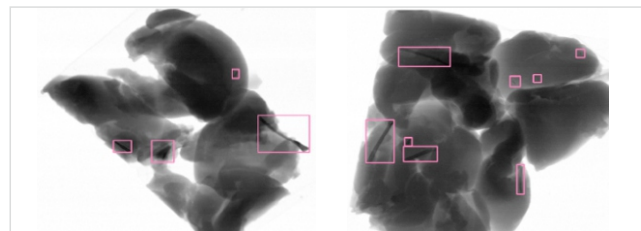
Inspect broken glass



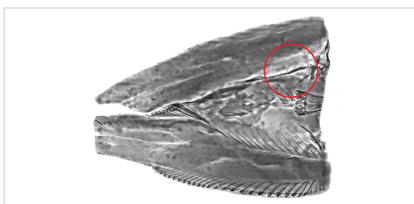
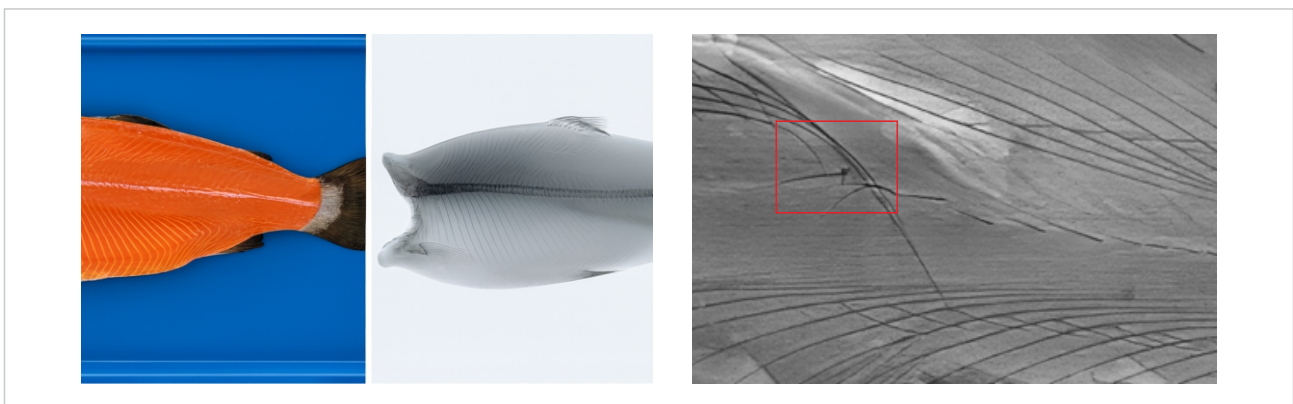
Testing ceramic balls



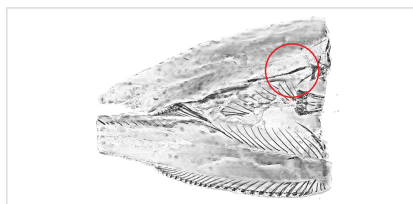
Detection of bone fragments



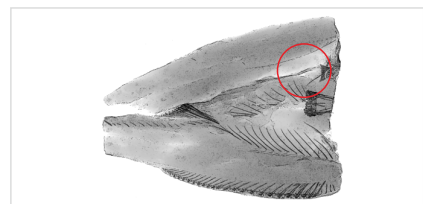
Aquatic product detection



Original art style (realistic)



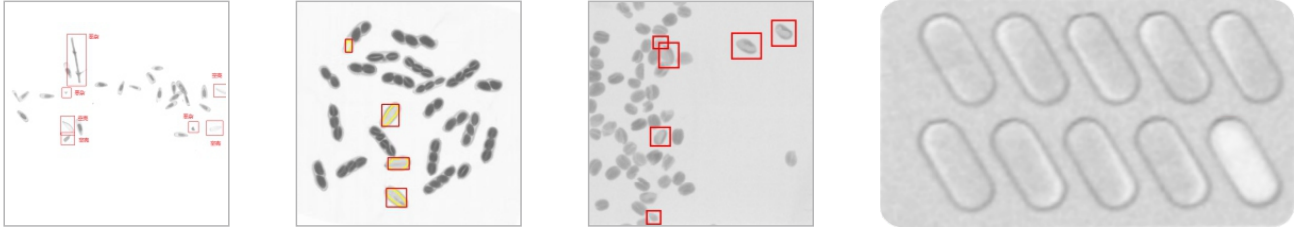
High-waisted style (sheer)



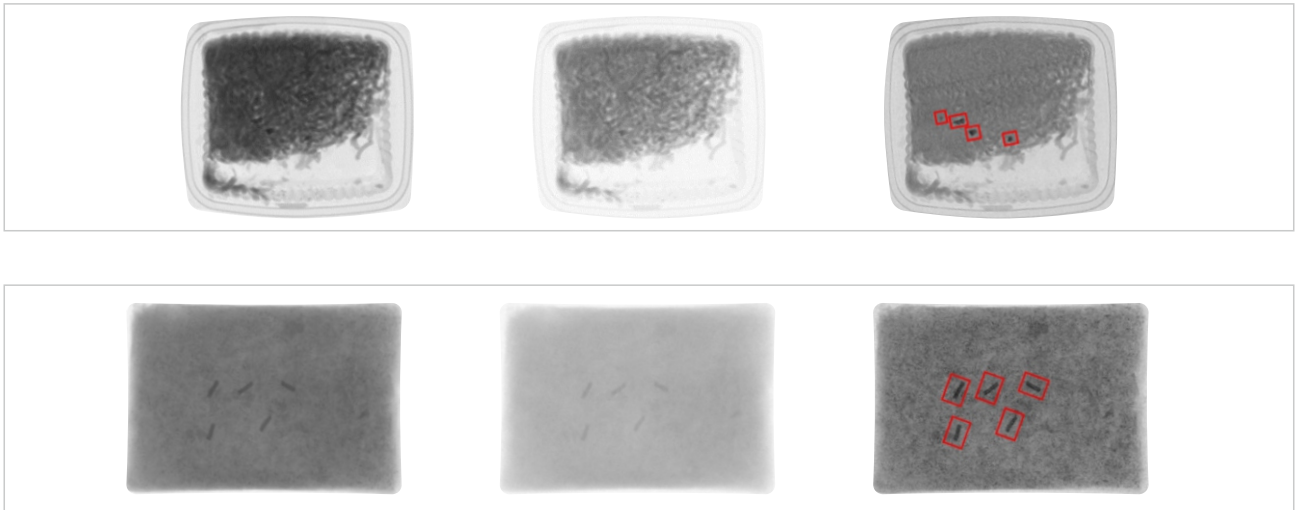
Relief style (soft)

▶ Application Examples

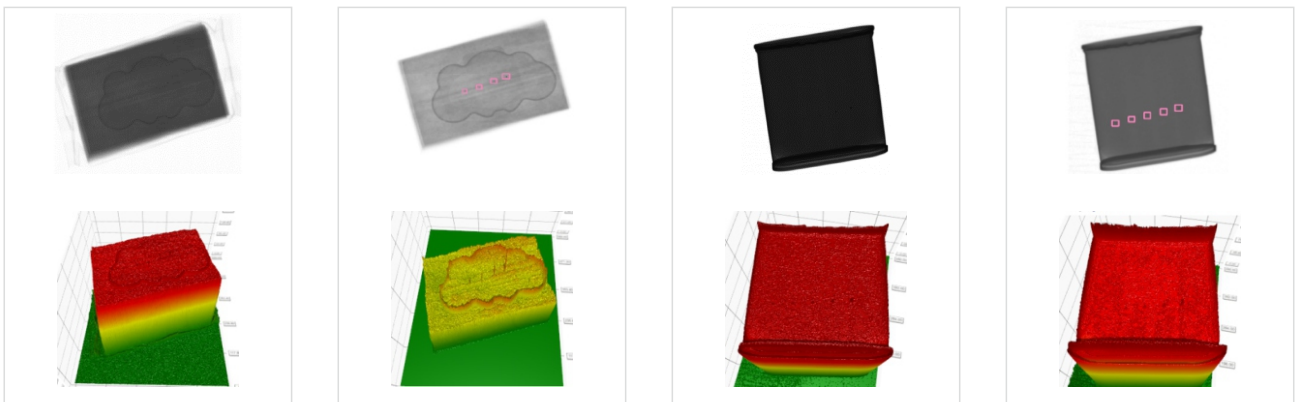
Empty shell + missing detection



Dual-energy detection—achieving deep AI fusion using a dual-stream neural network



Develop image enhancement algorithms for foreign objects with small density differences.



▶ Standard X-ray Equipment Inspection Of Packaging Bags



PRODUCT ADVANTAGES

- ✔ Based on Sooview's unique ZeroShot SvDetector deep learning algorithm, a customized foreign object detection solution suitable for various packaging products has been developed.
- ✔ It can detect foreign objects inside packaged products, as well as the integrity of the sealing of packaged products (clamping or damage), provide multiple removal methods, and meet the customization needs of various products.
- ✔ 4G wireless network, wired network with multiple connection methods, remote and fast technical support and operation.

AI can identify foreign objects, material inclusions, and broken bags at a glance and automatically remove defective products. It has stable performance and is easy to maintain for large, medium, and small packaging.



DETECTION RANGE

Foreign objects: metal, glass, ceramics, stones, rubber and hard plastics, etc.



APPLICATION SCENARIOS

Snack foods, sauces and condiments, meat products, frozen products, dairy products.

PRODUCT TECHNICAL PARAMETERS

Model	XSS-2410	XSS-4016	XSS-6030	XSS-6040	XSS-7040
X-ray Source (Unit: W)	210	240	240/350	240/350	350
Detector Resolution	0.4mm (unloaded; actual accuracy may vary depending on the sample material and is subject to testing)				
Inspection Accuracy	SUS sphere: 0.4mm, glass: 1.0mm, ceramic: 1.0mm, SUS wire: 0.2*5mm				
Operating Software	Self-developed Sooview detection software				
Human Machine Interface	21.5-inch touchscreen				
Conveyor Belt Speed	10-60 m/min				
Inspection Weight	<10Kg				
Inspection Dimensions	240*50mm	400*120mm	600*200mm	600*300mm	700*300mm
Power Supply	AC 220V 2.0kw 50hz				
Temperature and Humidity	Ambient temperature 0~45°C, relative humidity 30~85% (non-condensing)				
Waterproof Rating	Conveyor is IP66, other parts are IP54				
Equipment Materials	304 stainless steel, brushed finish				

▶ High-precision X-ray Equipment Inspection Of Packaging Bags



PRODUCT ADVANTAGES

- ✔ Employing multiple rows of 0.2/0.4mm high-resolution detectors, it can meet the high-precision detection requirements of higher detection accuracy or production line speed.
- ✔ Based on Sooview's unique ZeroShot SvDetector deep learning algorithm, a customized foreign object detection solution suitable for various packaging products has been developed.
- ✔ 4G wireless network, wired network with multiple connection methods, remote and fast technical support and operation.

Employing multi-row pixel, high-resolution imaging technology, it can meet the high-precision detection requirements under higher detection accuracy or higher production line speeds.



DETECTION RANGE

Foreign objects: metal, glass, ceramics, stones, rubber and hard plastics, etc.



APPLICATION SCENARIOS



PRODUCT TECHNICAL PARAMETERS

Model	XHS-2410	XHS-4016	XHS-6030	XHS-6040	XHS-7040
X-ray Source (Unit: W)	Maximum power options: 150W/210W/240W/350W				
Detector Resolution	0.2/0.4mm high-definition TDI (actual accuracy may vary depending on the sample used; testing is required)				
Inspection Accuracy	SUS sphere: 0.4mm, glass: 1.0mm, ceramic: 1.0mm, SUS wire: 0.2*5mm				
Operating Software	Self-developed Sooview detection software				
Human Machine Interface	21.5-inch touchscreen				
Conveyor Belt Speed	10-60 m/min				
Inspection Weight	<10Kg				
Inspection Dimensions	240*50mm	400*120mm	600*200mm	600*300mm	700*300mm
Power Supply	AC 220V 2.0kw 50hz				
Temperature and Humidity	Ambient temperature 0~45°C, relative humidity 30~85% (non-condensing)				
Waterproof Rating	Conveyor is IP66, other parts are IP54				
Equipment Materials	304 stainless steel, brushed finish				

▶ X-ray Detection Equipment

Used for bulk material



PRODUCT ADVANTAGES

- ✔ A customized deep learning design solution for various bulk material products has been developed based on Sooview's proprietary Small-svs subtle deep learning algorithm.
- ✔ It can effectively screen impurities such as metals, glass, ceramics, rubber, resin, and stones from raw materials, and separate empty, damaged, moldy, and worm-eaten materials, demonstrating excellent performance in sorting organic impurities. A multi-channel air-blowing device is used to precisely locate and remove impurities from the raw materials.
- ✔ 4G wireless network, wired network with multiple connection methods, remote and fast technical support and operation.

Foreign matter and defect detection in bulk products: low carry-out ratio and high detection rate.



DETECTION RANGE

It is suitable for intelligent impurity removal of nuts, seeds, beans, dehydrated vegetables, tea, medicinal herbs, granular materials, roasted nuts and seeds and other bulk materials..



APPLICATION SCENARIOS

Empty shell and foreign object detection
Empty shell detection



PRODUCT TECHNICAL PARAMETERS

Model	XSS-S4010	XSS-S6010
X-ray Source (Unit: W)	350W beryllium window	
Detector Resolution	0.4/0.4mm high-definition (actual accuracy may vary depending on the sample used; testing is required)	
Operating Software	Self-developed Sooview detection software	
Human Machine Interface	21.5-inch touchscreen	
Conveyor Belt Speed	60-90 m/min	
Inspection Weight	<10Kg	
Inspection Dimensions	400*80mm	600*80mm
Power Supply	AC 220V 2.0kw 50hz	
Temperature and Humidity	Ambient temperature 0~45°C, relative humidity 30~85% (non-condensing)	
Waterproof Rating	Conveyor is IP66, other parts are IP54	
Equipment Materials	304 stainless steel, brushed finish	

▶ X-ray Detection Equipment

Used for bottle and jar products

PRODUCT ADVANTAGES



- ✔ Employing dual X-ray sources and multi-detector simultaneous imaging eliminates blind spots, resulting in a higher detection rate for foreign objects at the bottom of bottles.
- ✔ No experience is required. Based on Sooview's proprietary AI algorithm platform, new products can be quickly added by following the wizard's automatic learning, achieving excellent high-precision detection.
- ✔ Utilizing AI algorithms, it can detect low-density and extremely small foreign objects based on various characteristics.
- ✔ 4G wireless network, wired network with multiple connection methods, remote and fast technical support and operation.

Employing a dual-light source, dual-viewpoint solution, this system can efficiently detect and reject upright conveyor-packaged, boxed, and bottled products containing foreign objects.



DETECTION RANGE

Foreign objects: metal, glass, ceramics, hard rubber, resin, bone, shells, stones, etc. Defects in bottles and jars themselves can also be detected.



APPLICATION SCENARIOS



PRODUCT TECHNICAL PARAMETERS

Model	XSS-B1626-2	XSS-B1626-4
X-ray Source (Unit: W)	350W	350W/500W
Detector Resolution	0.4mm/0.4mm HD/0.2mm HD (Actual accuracy subject to testing, affected by sample material)	
Inspection Accuracy	Stainless steel ball Φ 0.5mm, stainless steel wire Φ 0.3x2mm, glass ball Φ 1.5mm, ceramic ball Φ 1.5mm	
Human Machine Interface	21.5-inch touchscreen	
Conveyor Belt Speed	10-120 m/min	
Inspection Weight	<5kg	
Inspection Dimensions	160mm wide , 260mm high	
Power Supply	AC 220V 3.0kw 50hz	
Temperature and Humidity	Ambient temperature 0~45°C, relative humidity 30~85% (non-condensing)	
Waterproof Rating	Conveyor is IP66, other parts are IP54	
Equipment Materials	304 stainless steel, brushed finish	

▶ Three-view Equipment

Detection bottle and jar products



PRODUCT ADVANTAGES

- ✔ Based on Sooview's proprietary AI algorithm, it can detect low-density and extremely small foreign objects according to their characteristics.
- ✔ The main unit integrates a high-speed pneumatic push rod, enabling precise rejection of defective products even on high-speed production lines.
- ✔ It offers multiple connection methods, including 4G wireless and wired networks, ensuring data integrity even during power outages, and providing rapid remote technical support and operation.

Employing a single-light source, three-view solution, this system can efficiently detect and reject upright conveyor-packaged, boxed, and bottled products containing foreign objects.

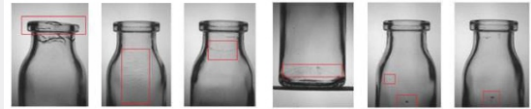


DETECTION RANGE

Foreign objects: metal, glass, ceramics, hard rubber, resin, bone, shells, stones, etc. Defects in bottles and jars themselves can also be detected.



APPLICATION SCENARIOS



PRODUCT TECHNICAL PARAMETERS

Model	XSS-B1626-3
X-ray Source (Unit: W)	350W/500W
Inspection Accuracy	Stainless steel ball $\Phi 0.5\text{mm}$, stainless steel wire $\Phi 0.3 \times 2\text{mm}$, glass ball $\Phi 1.5\text{mm}$, ceramic ball $\Phi 1.5\text{mm}$ (Actual accuracy subject to testing, affected by sample material)
Operating Software	Self-developed Sooview detection software
Human Machine Interface	21.5-inch touchscreen
Conveyor Belt Speed	10-120 m/min
Inspection Weight	<5kg
Inspection Dimensions	160mm wide , 260mm high
Power Supply	AC 220V 3.0kw 50hz
Temperature and Humidity	Ambient temperature 0~45°C, relative humidity 30~85% (non-condensing)
Waterproof Rating	Conveyor is IP66, other parts are IP54
Equipment Materials	304 stainless steel, brushed finish

▶ Fishbone X-ray Inspection Machine



PRODUCT ADVANTAGES

- ✔ Built on the Sooview AI algorithm platform and combined with the Diffusion.SvFisher algorithm, this system perfectly solves the problem of detecting foreign objects, fish bones, and spines in various fish products. It can detect uncalcified fish bones as small as 0.05mm, boasting world-class sensitivity and accuracy.
- ✔ It employs a segmented protective conveyor channel, ensuring comprehensive product safety and hygiene without blind spots. It can quickly drain moisture to prevent microbial growth.
- ✔ A 4K high-definition display clearly shows the location of fine bones in the inspected product, facilitating manual inspection.

Even the smallest fish bones are no longer hidden. The system images residual fish bones in fish products and enhances the display on a dual-station high-definition screen, assisting operators in efficiently removing fish bones and achieving "zero" fish bone residue.

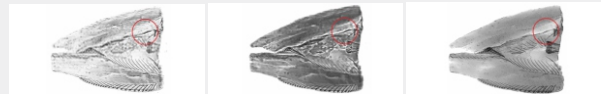


DETECTION RANGE

Foreign object / fish bone



APPLICATION SCENARIOS



PRODUCT TECHNICAL PARAMETERS

Model	XSS-F4610
X-ray Source (Unit: W)	350W beryllium window
Inspection Accuracy	Stainless steel wire 0.05*6mm (unloaded, subject to change depending on the sample, actual test results shall prevail)
Operating Software	Self-developed Sooview detection software
Human Machine Interface	21.5-inch/43-inch high-definition monitor
Conveyor Belt Speed	10-25m/min
Inspection Weight	<10Kg
Inspection Dimensions	450mm*100mm
Power Supply	AC220V, 2.1kVA, 50Hz
Temperature and Humidity	Ambient temperature -10~45°C, relative humidity 30~85% (non-condensing)
Waterproof Rating	Conveyor is IP66, other parts are IP65
Equipment Materials	316L stainless steel, brushed finish

▶ X-ray Dual-energy Machine

Detecting bone fragments in meat



PRODUCT ADVANTAGES

- ✔ The system employs a dual-energy detection algorithm, processing two images with different energies to effectively detect bone fragments of various sizes in meat products, improving the detection capability of low-density foreign objects in bulk material inspection.
- ✔ Based on the Sooview AI algorithm platform, coupled with proprietary AI algorithms, it accurately detects bone fragments.
- ✔ It utilizes a dedicated meat product conveyor; the conveyor system and main unit are detachable and can be directly washed, eliminating secondary contamination.

Advanced dual-energy detection technology enables high-precision detection of low-density foreign objects in meat products, such as residual bones, bone fragments, and cartilage.

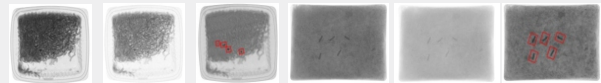


DETECTION RANGE

Foreign objects: residual bones, bone fragments, cartilage, etc. in meat products.



APPLICATION SCENARIOS



PRODUCT TECHNICAL PARAMETERS

Model	XSS-D4010
X-ray Source (Unit: W)	500W beryllium window
Detector Resolution	0.8mm HD
Inspection Accuracy	Stainless steel ball $\Phi 0.8\text{mm}$, stainless steel wire $\Phi 0.3 \times 2\text{mm}$, glass ball $\Phi 1.5\text{mm}$, ceramic ball $\Phi 1.5\text{mm}$ (actual accuracy is subject to testing and may vary depending on the sample).
Human Machine Interface	21.5-inch
Conveyor Belt Speed	10-40m/min
Inspection Weight	<10Kg
Inspection Dimensions	400mm*100mm
Power Supply	AC220V, 2.1kVA, 50Hz
Temperature and Humidity	Ambient temperature -10~45°C, relative humidity 30~85% (non-condensing)
Waterproof Rating	Conveyor is IP66, other parts are IP65
Equipment Materials	304 stainless steel, brushed finish

▶ Sorting And Rejection System

PRODUCT ADVANTAGES

- ✔ Driven by pneumatic or electric cylinders, multiple sorting methods are available to suit a variety of products.
- ✔ High precision and fast rejection speed improve product pass rate.
- ✔ Reinforced stainless steel frame with high waterproof rating.
- ✔ All contact parts are made of food-grade materials to ensure product contamination.
- ✔ Suitable for various automated production lines and logistics conveying systems.
- ✔ Can directly replace manual sorting, improving production efficiency and reliability.

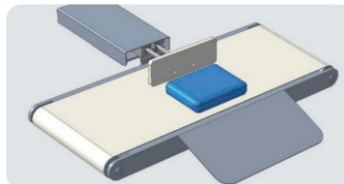
When used in conjunction with an inspection/checkweighing system, the inspection system provides alarm signals to control the sorting machine to remove defective products from the conveyor line, preventing them from flowing into the next production stage.

Air Blow Rejection



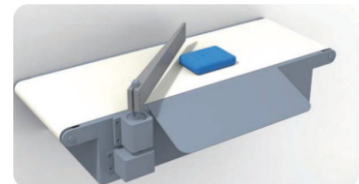
Suitable for products that are small in size, light in weight, and have a high production line speed.

Push Rod Rejection



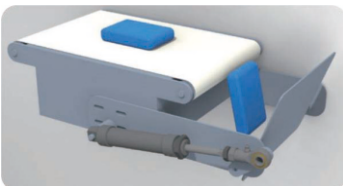
Applicable to most products, but not to sheet and liquid products.

Push Rejection



Applicable to most products, but not to sheet and liquid products.

Flip-type rejection



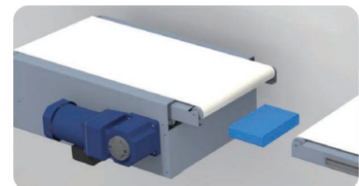
Defective products can be removed using a flip-over mechanism, suitable for thin sheets and small-sized products.

Drop rejection



Defective products can also be removed using a conveyor belt system, suitable for thin sheets and small-packaged liquids.

Telescopic rejection



Defective products can be removed using a telescopic and extending conveyor belt, suitable for fragile foods and products whose appearance needs to be protected during the removal process.