

Report No.: HN20235349

Date: 2023-12-13

Page 1 of 8

Applicant : Guangzhou ZhiLian Jewelry CO.,LTD.
Address : Room 601, Haicheng Yanxin Building, Haifeng County, Shanwei City,
Guangdong Province, China
Product Description : Silver Jewelry
Item No. : /
P.O. No. : /
Test age group : /
Client : /
Supplier : /
Country of Origin : /
Country of Destination : /
Sample Received : 11.30.2023
Test Period : 11.30.2023 - 12.13.2023

Ningbo Helmsman Quality Testing Services Co., Ltd.

宁波恒实质量检测技术服务有限公司

PREPARED BY :

Lucy

[Signature]

Lab Manager

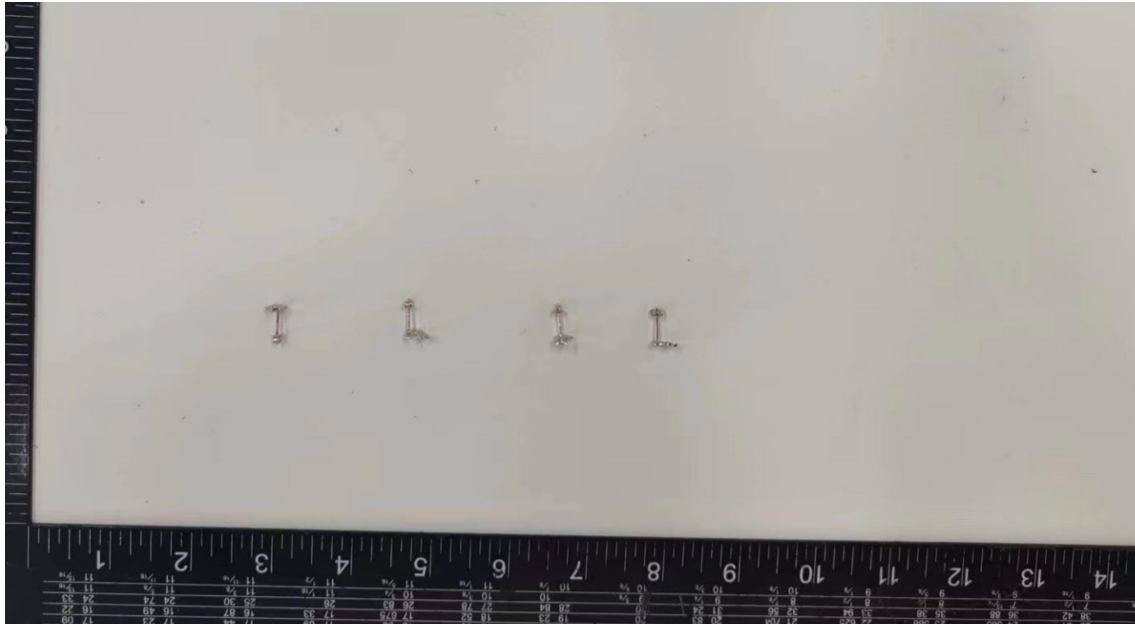


Testing Summary of Tested Component on Submitted Sample:

Migration of Certain Elements - ASTM F2999 Standard Consumer Safety Specification for Adult Jewelry	PASS
Lead - ASTM F2999 Standard Consumer Safety Specification for Adult Jewelry	PASS
Cadmium - ASTM F2999 Standard Consumer Safety Specification for Adult Jewelry	PASS
Nickel(Ni) Release - ASTM F2999 Standard Consumer Safety Specification for Adult Jewelry	See Result

***** To be Continued

PRODUCT PHOTO



***** To be continued *****

A. Migration of Certain Elements - ASTM F2999 Standard Consumer Safety Specification for Adult Jewelry

Test Method: ASTM F963-17

Test result:

Soluble Element(s)		As	Ba	Cd	Cr	Hg	Pb	Sb	Se
Maximum Allowable Limit (mg/kg)	Paints and similar surface coating materials	25	1000	75	60	60	90	60	500

Test Item(s)	Limit	Unit	RL	Result(s)				
				1	/	/	/	/
Soluble Arsenic (As)	25	mg/kg	5	ND	/	/	/	/
Soluble Barium (Ba)	1000	mg/kg	100	ND	/	/	/	/
Soluble Cadmium (Cd)	75	mg/kg	5	ND	/	/	/	/
Soluble Chromium (Cr)	60	mg/kg	5	ND	/	/	/	/
Soluble Mercury (Hg)	60	mg/kg	5	ND	/	/	/	/
Soluble Antimony (Sb)	60	mg/kg	5	ND	/	/	/	/
Soluble Selenium (Se)	500	mg/kg	20	ND	/	/	/	/
Conclusion(s)				PASS	/	/	/	/

Remark: 1. Reporting Limit (RL)
 2. ND = Not Detected (<RL).

***** To be Continued

B. Lead - ASTM F2999 Standard Consumer Safety Specification for Adult Jewelry

Test Method: Ref. to CPSC-CH-E1001-08.3 & CPSC-CH-E1002-08.3

Determination of Lead by ICP-OES

Test result:

Maximum Allowable Limit:	Electroplated metal	60000 mg/kg
	Un-plated metal	15000 mg/kg
	Plastic or rubber	200 mg/kg
	A dye or surface coating	600 mg/kg
	Materials not otherwise classified	600 mg/kg

Parameter	Result
	1
Lead	ND
Conclusion	PASS

Remark: 1. Reporting Limit (RL) for Lead = 10mg/kg.
2. ND = Not Detected (<RL).

***** To be Continued

C. Total Cadmium - ASTM F2999 Standard Consumer Safety Specification for Adult Jewelry**Test Method:** With reference to CPSC-CH-E1002-08.3&CPSC-CH-E1001-08.3

Determination of Cadmium by ICP-OES.

Test result:

Maximum Allowable Limit:	300mg/kg
--------------------------	----------

Parameter	Result	
	1	/
Total Cadmium(Cd)	ND	/
Conclusion	PASS	/

Remark: 1. Reporting Limit (RL) for Cadmium = 5mg/kg.
2. ND= Not Detected (<RL).

***** To be Continued

D. Nickel(Ni) Release- ASTM F2999 Standard Consumer Safety Specification for Adult Jewelry**Test Method:** EN 12472:2020 & EN 1811:2011+A1:2015**Test result:**

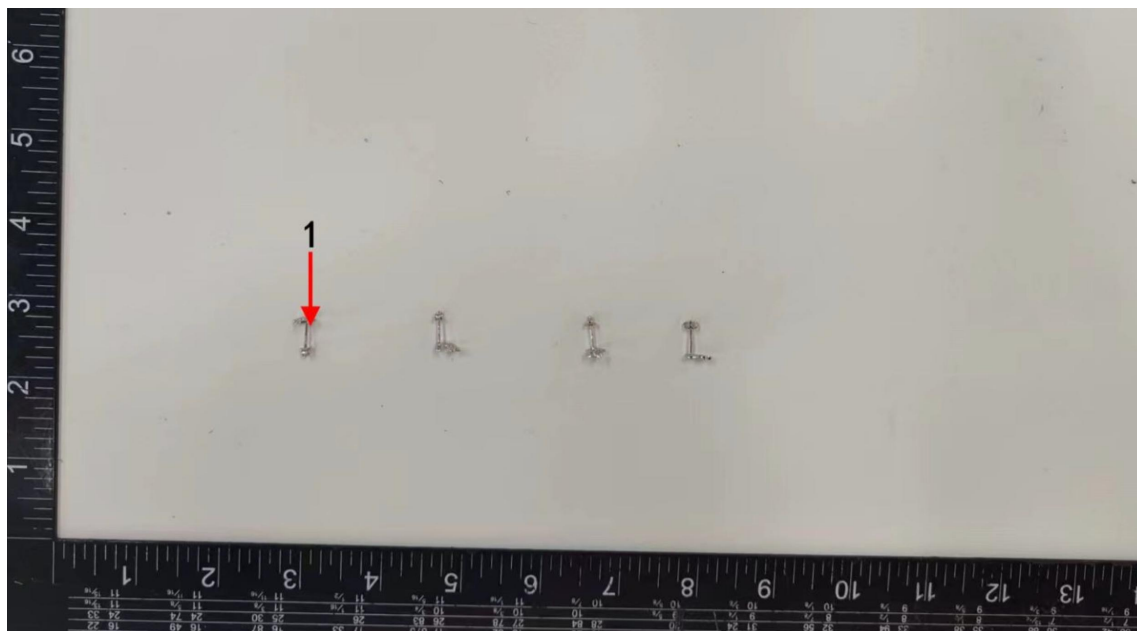
Material	Unit	MDL	Limit	Result(s)	Conclusion(s)
1	µg/cm ² /week	0.05	-	Trial 1 – Measurement 1: N.D.	See Result
				Trial 1 – Measurement 2: N.D.	
				Trial 2 – Measurement 1: N.D.	
				Trial 2 – Measurement 2: N.D.	
				Trial 3 – Measurement 1: N.D.	
				Trial 3 – Measurement 2: N.D.	

Remark: 1. MDL = Method Detection Limit;

2. ND = Not Detected (<MDL);

Photograph(s)

Photograph depicting Test Item(s)



*****End of Report*****