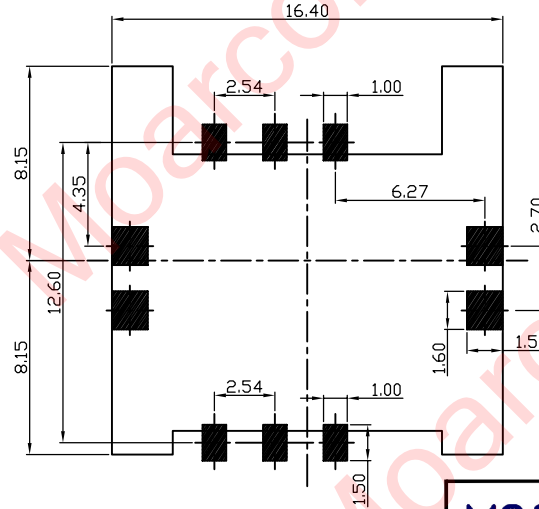
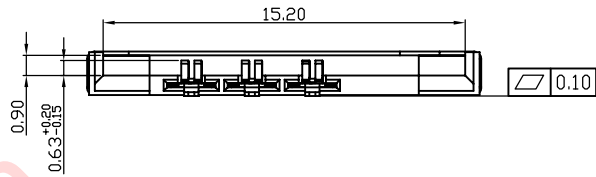
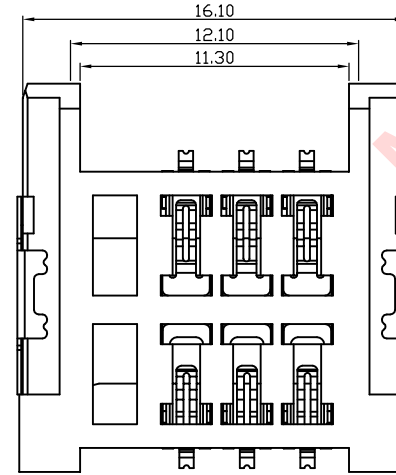
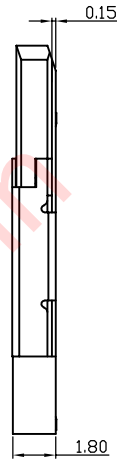
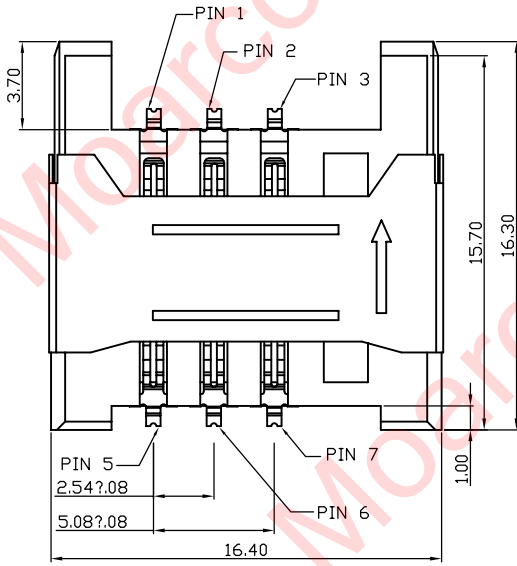


All materials, plating and process meet HF requirements.



Recommended PCB Layout

Notes:

1. Material:
 - 1.1 Plastic: LCP UL94V-0
 - 1.2 Terminal: Phosphorous Copper
 - 1.3 Shell: SUS

2. Main Properties:

- 2.1 Current Rating: 0.5A
- 2.2 Contact Resistance: 50mΩ MAX
- 2.3 Insulation Resistance: 100MΩ MIN 100V DC
- 2.4 Durability: 1000次

X1	----	Modify the description of SHELL electroplating to match the actual product	Aaron	2024.09.25
X0	----	NEW RELEASE	Seven	2023.04.17
REVISION NO.	ECR NO.	DESCRIPTION	MARK	DATE



DONG GUAN MOARCONN ELECTRONIC Co., Ltd.

DIMENSIONS INIT: mm	
UNLESS OTHERWISE SPECIFIABLE	
DIMENSION	TOLERANCE
X.X: ±	0.35
X.XX: ±	0.20
X.XXX: ±	0.10
ANGULAR: ±	2'

PRODUCT NAME : SIM CARD CONNECTOR PUSH-PULL TYPE HEIGHT 1.8mm	DRAWING: Aaron	DATE: 2024.09.25
PRODUCT NO. : SM180-T1251-01-W	CHECK:	DATE:
DRAWING NO. : D-SM180-T1251-01-W	APPROVED:	DATE:
SCALE: 1:1	DWG ID: C D	REV.: X1
		PAGE: 1 OF 1

