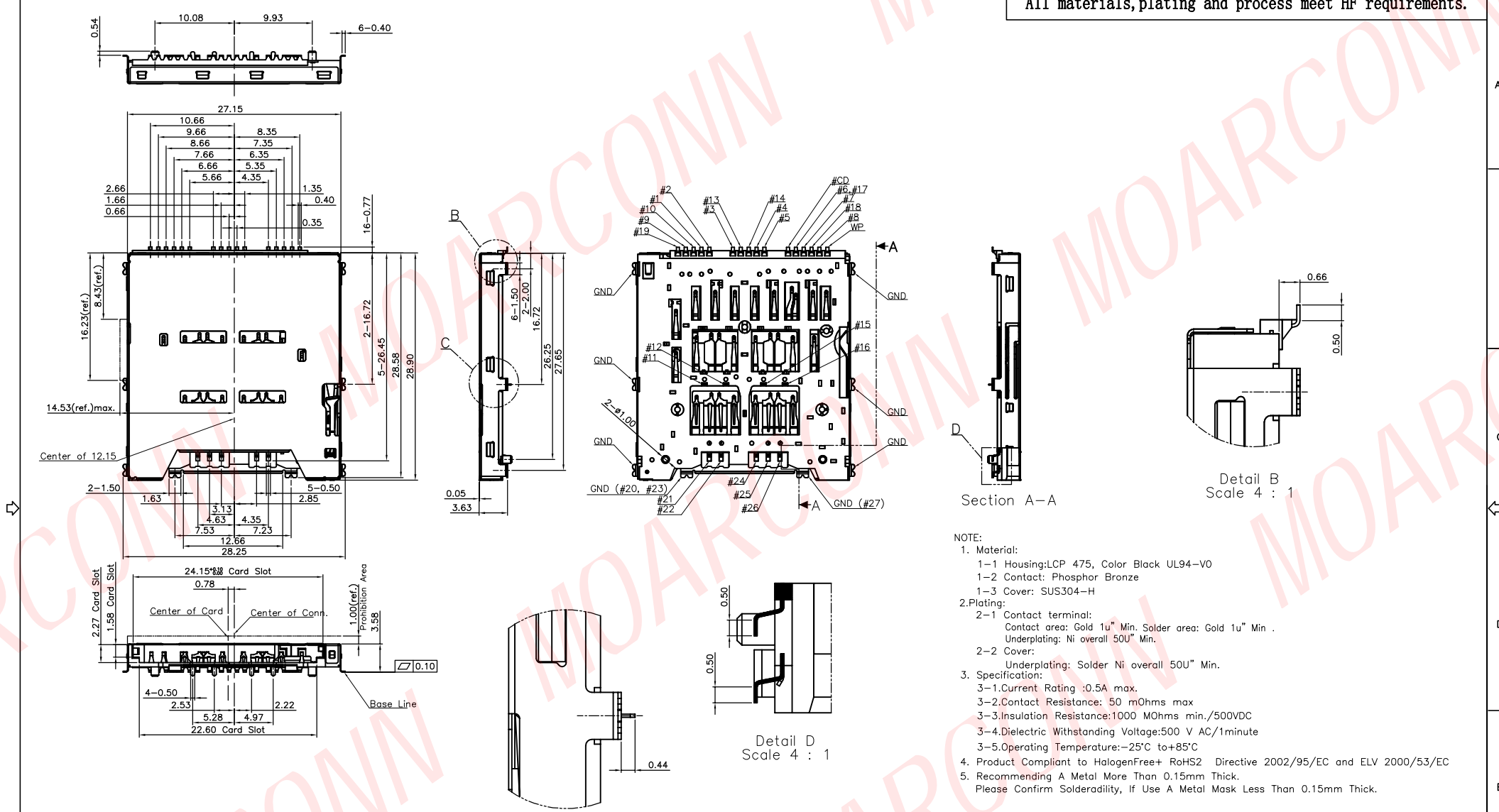


All materials, plating and process meet HF requirements.



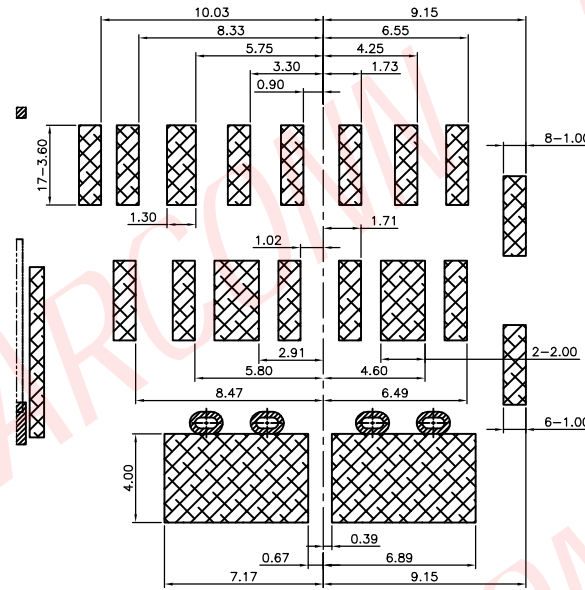
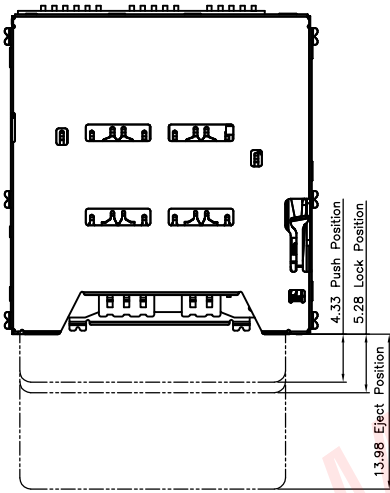
NOTE:

- Material:
  - 1-1 Housing: LCP 475, Color Black UL94-V0
  - 1-2 Contact: Phosphor Bronze
  - 1-3 Cover: SUS304-H
- Plating:
  - 2-1 Contact terminal:
    - Contact area: Gold 1u" Min. Solder area: Gold 1u" Min.
    - Underplating: Ni overall 50U" Min.
  - 2-2 Cover:
    - Underplating: Solder Ni overall 50U" Min.
- Specification:
  - 3-1 Current Rating: 0.5A max.
  - 3-2 Contact Resistance: 50 mOhms max
  - 3-3 Insulation Resistance: 1000 MOhms min./500VDC
  - 3-4 Dielectric Withstanding Voltage: 500 V AC/1minute
  - 3-5 Operating Temperature: -25°C to +85°C
- Product Compliant to Halogen Free + RoHS2 Directive 2002/95/EC and ELV 2000/53/EC
- Recommending A Metal More Than 0.15mm Thick.
- Please Confirm Solderability, If Use A Metal Mask Less Than 0.15mm Thick.

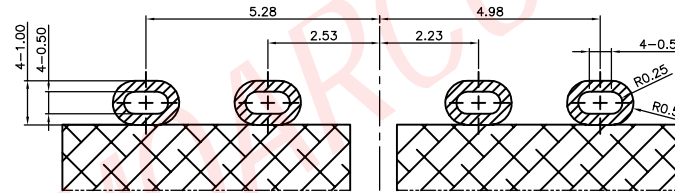
REVISION NO.	ECR NO.	DESCRIPTION	MARK	DATE
X0		NEW RELEASE	Alexander	2024.08.04

		<b>DONG GUAN MOARCONN ELECTRONIC Co., Ltd.</b>				
		PRODUCT NAME : SD Express 8.0 H3.58 Push-Push	DRAWING: Alexander	DATE: 2024.08.04		
DIMENSIONS INIT: mm UNLESS OTHERWISE SPECIFIABLE		PRODUCT NO. : SD358-T1250-10	CHECK:	DATE:		
DIMENSION TOLERANCE X.X: ± 0.35 X.XX: ± 0.20 X.XXX: ± 0.10 ANGULAR: ± 2'		DRAWING NO. : D-SD358-T1250-10	APPROVED:	DATE:		
			SCALE: 1:1	DWG ID: CD	REV.: X0	PAGE: 1 OF 2

All materials, plating and process meet HF requirements.

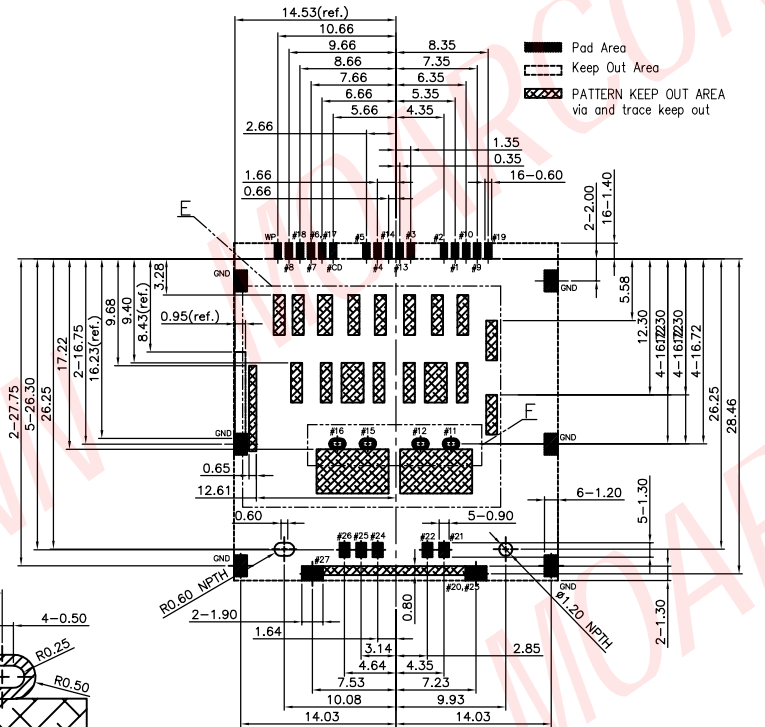
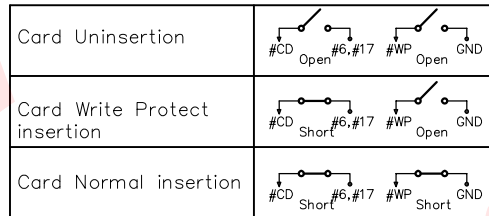


Detail E  
Scale 2 : 1

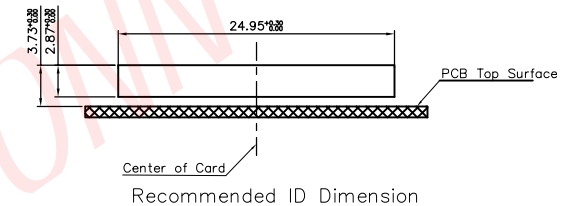


Detail F  
Scale 4 : 1

No.	PIN No.	FUNCTION		
		SD Mode	UHS-II Mode	PCIe Mode
No. 1	#1	CD/DAT3	-	PERST#
No. 2	#2	CMD	-	-
No. 3	#3	VSS1	VSS1	VSS1
No. 4	#4	VDD	VDD1	VDD1
No. 5	#5	CLK	-	-
No. 6	#6	VSS2	VSS2	VSS2
No. 7	#7	DAT0	RCLK+	REFCLK+
No. 8	#8	DAT1	RCLK-	REFCLK-
No. 9	#9	DAT2	-	CLKREQ#
No. 10	#10	-	VSS3	VSS3
No. 11	#11	-	D0+	PCIe_Tx0-
No. 12	#12	-	D0-	PCIe_Tx0-
No. 13	#13	-	VSS4	VSS4
No. 14	#14	-	VDD2	VDD2
No. 15	#15	-	D1-	PCIe_Rx0-
No. 16	#16	-	D1+	PCIe_Rx0-
No. 17	#17	-	VSS5	VSS5
No. 18	#18	-	-	VDD3
No. 19	#19	-	-	VDD1a
No. 20	#20	-	-	VSS6
No. 21	#21	-	-	PCIe_Tx1-
No. 22	#22	-	-	PCIe_Tx1-
No. 23	#23	-	-	VSS7
No. 24	#24	-	-	VDD2a
No. 25	#25	-	-	PCIe_Rx1-
No. 26	#26	-	-	PCIe_Rx1-
No. 27	#27	-	-	VSS8
No. 28	#CD	CARD DETECT		
No. 29	#WP	WRITE PROTECT		



RECOMMEND P.C.B LAYOUT(TOP VIEW)  
(Tolerances Unless Otherwise Spec. ±0.05)



**MOARCONN**  
MORE CONNECTIONS SMART FUTURE

**DONG GUAN MOARCONN ELECTRONIC Co., Ltd.**

DIMENSIONS INIT: mm  
UNLESS OTHERWISE SPECIFIABLE

DIMENSION	TOLERANCE
X.X: ±	0.35
X.XX: ±	0.20
X.XXX: ±	0.10
ANGULAR: ±	2'

PRODUCT NAME : SD Express 8.0 H3.58 Push-Push	DRAWING: Alexander	DATE: 2024.08.04
PRODUCT NO. : SD358-T1250-10	CHECK:	DATE:
DRAWING NO. : D-SD358-T1250-10	APPROVED:	DATE:
SCALE: 1:1	DWG ID: CD	REV.: X0
		PAGE: 2 of 2

REVISION NO.	ECR NO.	DESCRIPTION	MARK	DATE
X0	---	NEW RELEASE	Alexander	2024.08.04