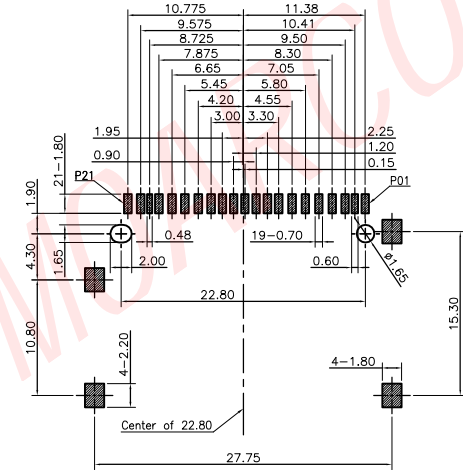
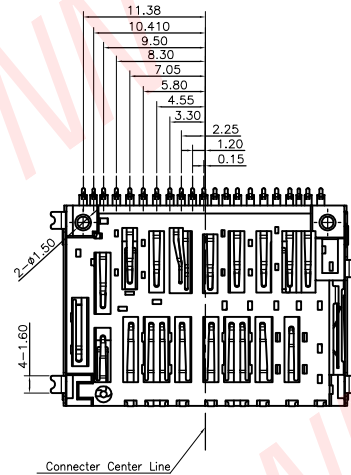
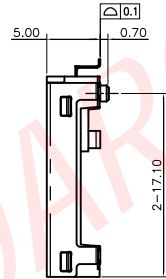
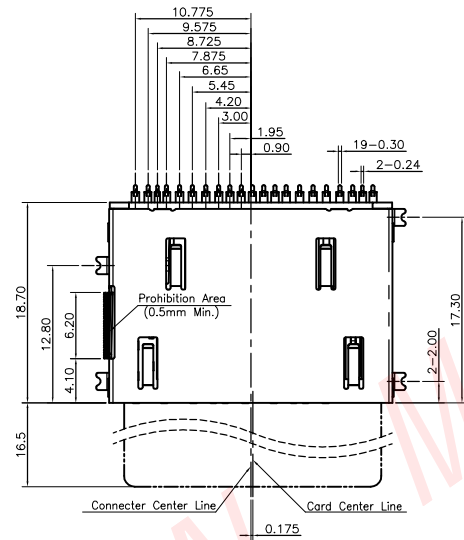
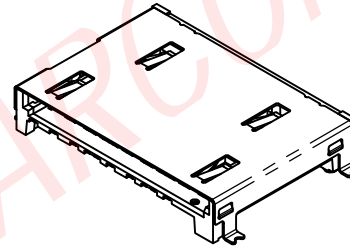
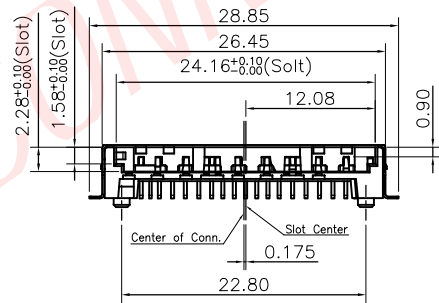


All materials, plating and process meet HF requirements.



Recommended PCB Layout
Top View (Tolerance 0.05)

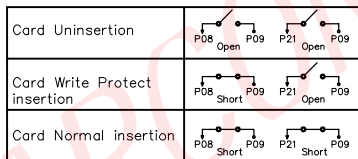


Note:

1. Material:
 - 1-1. Plastic: LCP, Black, UL94V-0
 - 1-2. Contact: Coper Alloy
 - 1-3. Shell: Stainless Steel
2. Plating:
 - 2-1. Contact:
 - Contact Area: Au 1μ" min. Plating Over Ni 50μ" min.
 - Soldertail: Matte Tin 100μ" min. Plating Over Ni 50μ" min.
 - 2-2. Shell:
 - Solderability Ni 50μ" min. Over All
3. Contact And Tail Coplanarity To Be 0.10mm max.

Pin Assignment Table

Pin No.	SD Mode		UHS-II Mode		SD Express Mode	
	Name	Description	Name	Description	Name	Description
P01		VSS3	Supply Voltage Ground	VSS3	Supply Voltage Ground	
P02			Reserved		Reserved area for future pad extension	
P03	DAT2	Data Line [BIT 2]		CLKREQ#	Reference clock request signal. Also used by UHS-II extension.	
P04		DO+	Differential Data 0+	PCie TX+		
P05	CD/DAT#	Card Detect / Data Line [BIT 3]		PERST#	PE-Reset is a functional reset	
P06		DO-	Differential Data 0-	PCie TX-		
P07	CMD	Command / Response				
P08	CD	Card Detect	CD	Card Detect		
P09	VSS1	Supply Voltage Ground	VSS1	Supply Voltage Ground	VSS1	Supply Voltage Ground
P10		VSS4	Supply Voltage Ground	VSS4	Supply Voltage Ground	
P11		VDD2	Supply Voltage (1.8V)	VDD2	Supply Voltage (1.8V)	
P12	VDD	Supply Voltage	VDD1	Supply Voltage (3.3V)	VDD1	Supply Voltage (3.3V)
P13		D1-	Differential Data 1-	PCie RX-		
P14	CLK	Clock				
P15		D1+	Differential Data 1+	PCie RX+		
P16	VSS2	Supply Voltage Ground	VSS2	Supply Voltage Ground	VSS2	Supply Voltage Ground
P17		VSS5	Supply Voltage Ground	VSS5	Supply Voltage Ground	
P18	DAT0	Data Line [BIT 0]	RCLK+	REFCLK+	PCie Ref Clock	
P19				VDD3	Supply Voltage (1.2V)-TBD	
P20	DAT1	Data Line [BIT 1]	RCLK-	REFCLK-	PCie Ref Clock	
P21	WP	Write Protect	WP	Write Protect	WP	Write Protect



XO	----	NEW RELEASE	Alexander	2021.11.25
REVISION NO.	ECR NO.	DESCRIPTION	MARK	DATE

	DONG GUAN MOARCONN ELECTRONIC Co., Ltd.			
	DIMENSIONS INIT: mm	PRODUCT NAME : SD7.0 TOP H5.0 Non-push	DRAWING: Alexander	DATE: 2021.11.25
	UNLESS OTHERWISE SPECIFIABLE	PRODUCT NO. : SD500-T1250-01	CHECK:	DATE:
	DIMENSION TOLERANCE	DRAWING NO. : D-SD500-T1250-01	APPROVED:	DATE:
X.X: ± 0.35 X.XX: ± 0.20 X.XXX: ± 0.10 ANGULAR: ± 2'		SCALE: 1:1	DWG ID: C D	REV.: X0
				PAGE: 1 OF 1