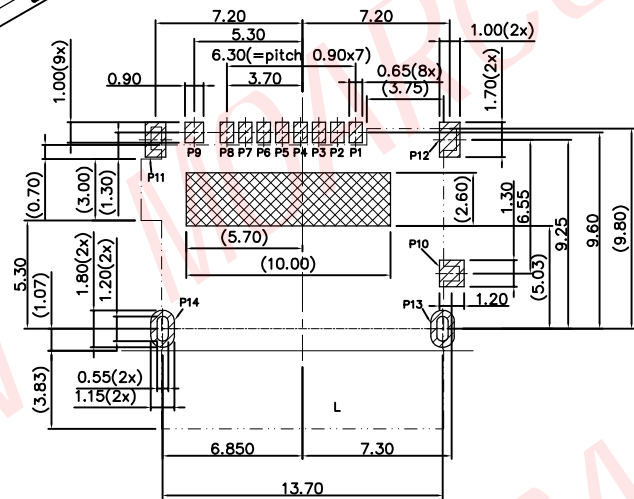
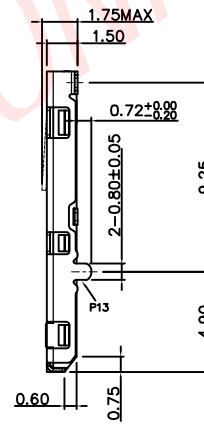
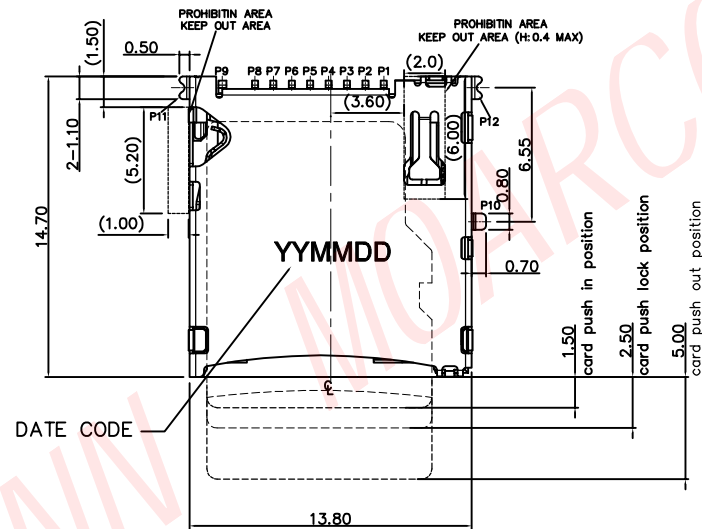
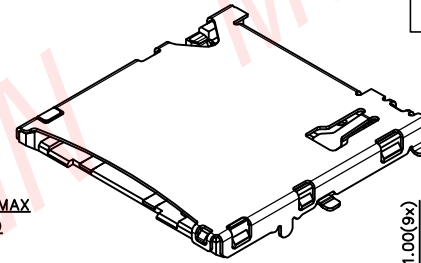
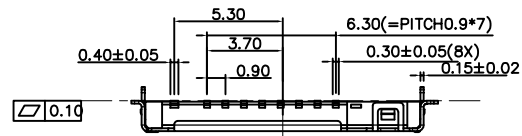


All materials, plating and process meet HF requirements.

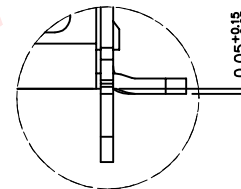
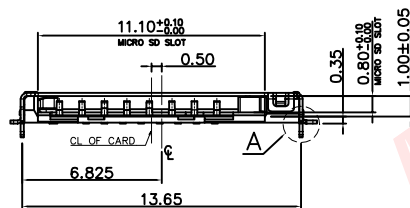


RECOMMENDED PCB LAYOUT(TOP VIEW)
GENERAL TOLERANCE: ±0.05

- PAD AREA
- NO COPPER AREA
- KEEP OUT AREA

NOTES:

1. MATERIAL:
 - 1.1 PLASTIC: LCP , UL 94V-0, COLOR: BLACK
 - 1.2 CONTACT: COPPER ALLOY (C5210)
 - 1.3 SHELL: STAINLESS STEEL (SUS304)
2. FINISH:
 - 2.1 TERMINAL: 50u" MIN. NICKEL PLATED OVERALL
 - 2.2 CONTACT: Au 1u"
 - 2.3 TAIL: 100u" MATT-TIN PLATED
 - 2.4 SHELL: 50u" MIN. NICKEL PLATED OVERALL
3. PRODUCT MUST CONFORM TO RoHS AND HALOGEN FREE REQUIREMENT



DETAIL A
SCALE 5:1

PIN NUMBER	PIN DEFINE
PIN 1	MICRO SD_DAT2
PIN 2	MICRO SD_CD/DAT3
PIN 3	MICRO SD_CMD
PIN 4	MICRO SD_VDD
PIN 5	MICRO SD_CLK
PIN 6	MICRO SD_VSS
PIN 7	MICRO SD_DAT0
PIN 8	MICRO SD_DAT1
PIN 9	MICRO SD_CD
PIN 10	GND
PIN 11,12,13,14	GND

CARD DETECT SWITCH OPEN/CLOSE FOR MICRO SD CARD POSITION

UN-INSERTION	CARD DERECT SWITCH
CARD UNINSERTION	OPEN
CARD HALF INSERTION	OPEN
CARD INSERTION	CLOSE

N/O OPEN CLOSE

REVISION NO.	ECR NO.	DESCRIPTION	MARK	DATE
A	---	NEW RELEASE	Alexander	2020.08.21

MOARCONN MORE CONNECTIONS SMART FUTURE		DONG GUAN MOARCONN ELECTRONIC Co.,Ltd.				
DIMENSIONS INIT: mm	PRODUCT NAME : Micro SD PUSH H1.5(Shell without holes)	DRAWING: Alexander	DATE: 2020.08.21			
UNLESS OTHERWISE SPECIFIABLE	PRODUCT NO. : MC150-T1250-21	CHECK:	DATE:			
DIMENSION TOLERANCE	DRAWING NO. : D-MC150-T1250-21	APPROVED:	DATE:			
X.X: ± 0.35			SCALE: 1:1	DWG ID: C D	REV.: A	PAGE: 1 of 1
X.XX: ± 0.25						
X.XXX: ± 0.10						
ANGULAR: ± 2'						