

Rudder Manual

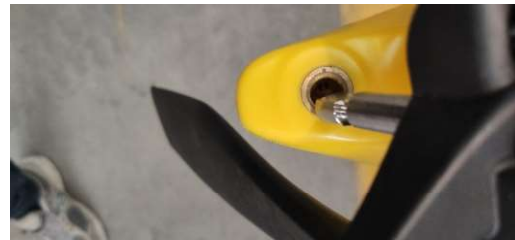
1. Release the rudder rope from the cleat locking status



2. Get the rudder out of the hatch



3. Check the rudder pin lock direction, slide in the rudder pin correctly till the bottom, and spin the rudder in position



4. Insert the rudder steering rope through the rudder house hole, hook back and tighten it, do same on the other side of the rudder



5. Adjusting the footrest pedal to make sure they're at the same position, keep the footrest adjusting pedal upright.

Connecting the steering rope to the footrest rope on both sides, and make sure the rudder is not leaning to any side, and then tighten the steering ropes on both sides.



6. When the rudder foil is down vertically, it's ready to use



7. For short term storage, pull the rudder rope and secure the rope on the cleat, secure the rudder foil with the bungee loop when it's rested on the deck, always slow down when release the rudder down in the water.

For long term storage, get the rudder back in the hatch.

