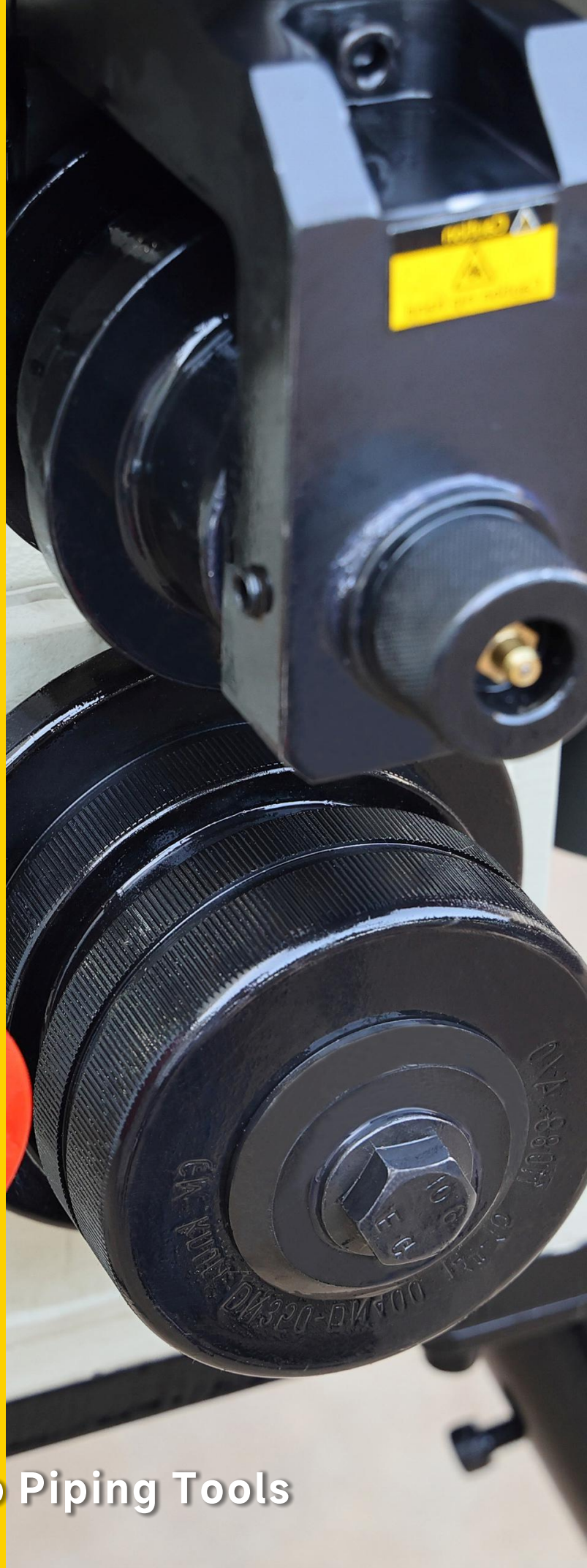


# General Catalog Piping Tools

Selected products

**2025**

**Dedicated to Piping Tools**







**GRUV**  
MASTER

**WELPING**

Innovative and reliable high quality piping tools and machines for the jobs on construction sites all around the globe

[gruvmastertools.com](http://gruvmastertools.com)



# Your One-stop Partner for Pipe Grooving Solutions

## Hydraulic Roll Grooving

Designed for small-medium-large diameter steel pipes, size covers from 1" upto 32" in various models

Unique hydraulic system for long-time use and stable performance

Ideal for fire protection, HVAC, and industrial piping projects

Size combinations:

1"-8", 2"-8"

1"-12", 2"-12"

2"-16"

8"-24", 8"-32"

**P1-P12**



## Automatic Roll Grooving

One-button operation with automatic feeding, positioning, and grooving

Designed for prefabrication workshops and high-output environments

PLC control system for consistency and efficiency

Accurate groove depth control for high-standard applications

Size combinations:

2"-12", 8"-24"

**P13-P14**

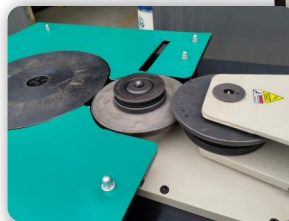
## Pipe Fitting Roll Grooving

Specially designed for elbows, tees, flanges, and other fittings

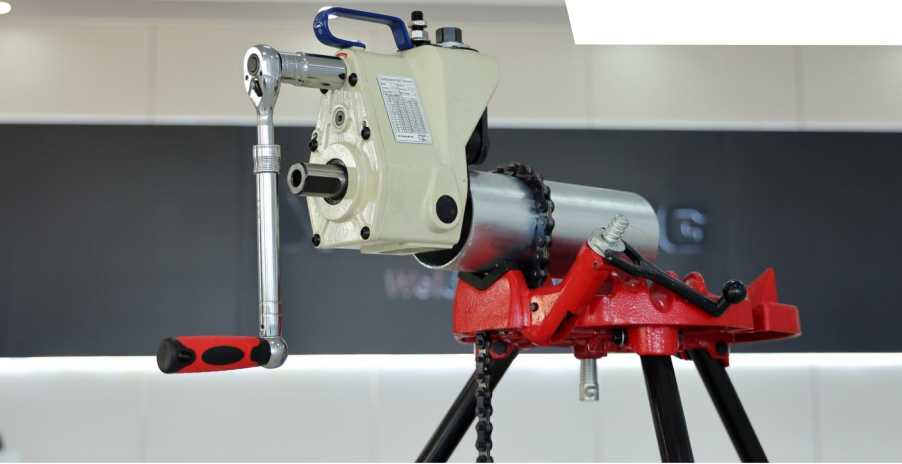
Adjustable clamping and mold structure for various geometries

Commonly used in fitting manufacturing and prefab plants

**P15**



# Combination Roll Groover



Compact and portable, suitable for fieldwork or tight spaces  
Hand operating, or work with power drives and threading machines

Size combinations:

1"-6", 1"-12"

1 1/4"-6"

2"-6"

**P17-P21**

## Groove Cutting Machine

**P22**

Cutting-based grooving avoids pipe deformation and material stress  
Equipped with hardened cutting tools for high-strength steel or stainless steel  
Delivers high groove accuracy  
Ideal for mining, heavy industry, and thick-wall piping systems  
Size combinations:  
2"-12"  
8"-32"



## Groove Reforming Machine

**P16**

Restores roundness after grooving to ensure tight connections  
Improves sealing performance and installation efficiency  
Size combinations:  
2"-12", 2"-24"



1"~8"



## RG-1X

### Electric Hydraulic Roll Grooving Machine

#### Design Features

- The RG-1X Roll Grooving Machine is engineered for grooving steel and stainless steel pipes ranging from 1" to 8" (DN25~DN200), suitable for SCH10 to SCH40.
- Highly versatile, the RG-1X is ideal for both high-volume workshop use and flexible on-site applications. It features an integrated design with motor, hydraulic feeding pump, foot switch, and pipe stand for efficient and reliable grooving.
- The built-in high-performance gear reduction motor, combined with an integrated hydraulic feeding pump and groove depth lock nut, ensures a compact design, low noise operation, and consistent, high-quality grooving with excellent efficiency.

#### Specifications

Fabrication Capacity:	1"~8" (DN25~DN200, Φ33~Φ219) SCH10/40 Steel Pipe
Max Wall Thickness:	8mm
Output Speed:	23R.P.M
Gross Weight:	98kgs
Packing Size:	73*40*77cm

#### Drive Unit

Catalog No.	Phase	Power	Voltage	Frequency
900010	Single	800W	220V	50/60Hz
900011	Single	800W	110V	50/60Hz

#### Standard

Catalog No.	Description	N.W (kg)	Ref No.
911042	Drive roller 1"~1 1/2" (Φ33~Φ48)	1.10	①
911043	Drive roller 2"~6" (Φ60~Φ168)	1.30	②
911044	Drive roller 8" (Φ219)	1.40	③
912011	Groove roller 1"~1/2" (Φ33~Φ48)	0.40	④
912012	Groove roller 2"~6" (Φ60~Φ168)	0.45	⑤
912013	Groove roller 8" (Φ219)	0.45	⑥
998078	Pipe stand for 1"~8" (Φ33~Φ219)	6.90	⑦

#### Optional

Catalog No.	Description	N.W (kg)	Ref No.
998026	Foot Switch	1.5	⑧



#### Drive Roller



#### Groove Roller



1"~8"

Extensive Models  
for 1"-8" grooving



**RG-1C**

With 4 wheels stand



**RG-1A**

With 4-legs foldable stand



2"~8"



## RG-7X

### Electric Hydraulic Roll Grooving Machine

#### Design Features

- Model RG-7X standard-duty Roll Grooving Machine is designed to roll grooves on steel pipes and Stainless Steel. from 2"-8" (DN50~DN200) SCH10 / SCH40.
- The lightweight and compact design of this product is a cost-effective solution that can help save investment on grooving machines. It provides a convenient alternative to heavy-duty models. This makes it an ideal choice for standard to light-duty applications.
- The interlocking structure of groove roller and drive roller ensures precise control of the pipe sealing surface length.
- Inbuilt high-performance gear reducing motor contributes compact size and low noise.

#### Specifications

Fabrication Capacity:	2"~8" (DN50~DN200, $\Phi 60 \sim \Phi 219$ ) SCH10/40 Steel Pipe
Max Wall Thickness:	8 mm
Output Speed:	30R.P.M
Gross Weight:	84kgs
Packing Size:	68*40*72cm

#### Drive Roller



#### Groove Roller



#### Drive Unit

Catalog No.	Phase	Power	Voltage	Frequency
900030	Single	800W	220V	50/60Hz
900031	Single	800w	110V	50/60Hz

#### Standard

Catalog No.	Description	N.W (kg)	Ref No.
911226	Drive roller 2"~2.5" ( $\Phi 60 \sim \Phi 73$ )	0.4	①
911227	Drive roller 3-6" ( $\Phi 89 \sim 168$ )	0.8	②
911228	Drive roller 8" ( $\Phi 219$ )	1	③
912094	Groove roller 2-6" ( $\Phi 60 \sim 168$ )	0.5	④
912095	Groove roller 8" ( $\Phi 219$ )	0.58	⑤
998169	Pipe stabilizer	2	⑥
998028	Pipe Stand	2.20	⑦

2"~8"



## RG-3

### Light-duty Electric Hydraulic Roll Grooving Machine

#### Design Features

- Model RG-3 light-duty Electric Hydraulic Roll Grooving Machine is designed to roll grooves on steel pipes and Stainless Steel from 2"-8" (DN50~DN200) SCH10 / SCH40.
- The lightweight and compact design of this product is a cost-effective solution that can help save investment on grooving tools.
- The integrated hydraulic feeding pump and groove depth lock nut ensure high quality grooves and high efficiency.
- Inbuilt high-performance gear reducing motor contributes compact size and low noise.

#### Specifications

Fabrication Capacity:	2"~4" (DN50~DN100, $\Phi 60\sim\Phi 114$ ) SCH10/40 Steel Pipe
	5"~8" (DN125~DN200, $\Phi 139\sim\Phi 219$ ) SCH10/20 Steel Pipe
Max Wall Thickness:	6mm
Output Speed:	30R.P.M
Gross Weight:	47kgs
Packing Size:	56*26*65cm

#### Drive Unit

Catalog No.	Phase	Power	Voltage	Frequency
900030	Single	800W	220V	50/60Hz
900031	Single	800W	110V	50/60Hz

#### Standard

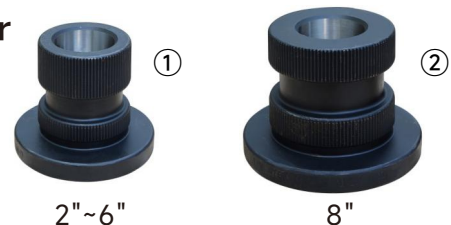
Catalog No.	Description	N.W (kg)	Ref No.
911074	Drive roller 2"~6" ( $\Phi 60\sim\Phi 168$ )	1.30	①
911075	Drive roller 8" ( $\Phi 219$ )	1.40	②
912018	Groove roller 2"~6" ( $\Phi 60\sim\Phi 168$ )	0.45	③
912032	Groove roller 8" ( $\Phi 219$ )	0.45	④
998028	Pipe Stand for 2"~8" ( $\Phi 60\sim\Phi 219$ )	2.20	⑤



#### Groove Roller



#### Drive Roller





2"~12"



## RG-2X

### Electric Hydraulic Roll Grooving Machine

#### Design Features

- Designed for versatility and performance, the RG-2X Roll Grooving Machine handles steel and stainless steel pipes ranging from 2" to 12" (DN50~DN300), SCH10 to SCH40.
- The interlocking structure between the groove roller and drive roller ensures precise control of the pipe sealing surface length.
- Unique split-type hydraulic system features an independent pump and cylinder structure. The fully enclosed pump design eliminates the need for a breather hole, reducing hydraulic oil replacement frequency and extending pump lifespan.

#### Specifications

Fabrication Capacity:	2"~12"(DN50~DN300,Φ60~Φ325) SCH10/40 Steel Pipe
Max Wall Thickness:	10mm
Output Speed:	23R.P.M
Gross Weight:	145kgs
Packing Size:	82*47*88cm

#### Drive Unit

Catalog No.	Phase	Power	Voltage	Frequency
900020	Single	1100W	220V	50/60Hz
900021	Single	1100W	110V	50/60Hz

#### Standard

Catalog No.	Description	N.W (kg)	Ref No.
911022	Drive roller 2"~3" (Φ60~Φ89)	1.30	①
911021	Drive roller 3½"~6" (Φ101~Φ168)	1.30	②
911020	Drive roller 8"-12" (Φ219~Φ325)	1.40	③
912010	Groove roller 2"~3" (Φ60~Φ89)	0.45	④
912009	Groove roller 3½"~6" (Φ101~Φ168)	0.45	⑤
912008	Groove roller 8"-12" (Φ219~Φ325)	0.45	⑥
998078	Pipe stand for 2"~12" (Φ60~Φ325)	6.90	⑦
998026	Foot Switch	1.50	⑧

#### Optional

Catalog No.	Description	N.W (kg)	Ref No.
912040	Groove roller for SCH10 Anti-flare(2"-3")	0.45	④
912039	Groove roller for SCH10 Anti-flare(3½"-6")	0.45	⑤
912038	Groove roller for SCH10 Anti-flare(8"-12")	0.45	⑥



#### Drive Roller



#### Groove Roller



1"~12"

## RG-2S

Heavy-duty Electric Hydraulic Roll Grooving Machine



Built-in depth scale

### Design Features

- Designed for versatility and performance, the RG-2S Roll Grooving Machine handles steel and stainless steel pipes ranging from 1" to 12" (DN25-DN300), SCH10 to SCH40.
- The interlocking structure between the groove roller and drive roller ensures precise control of the pipe sealing surface length.
- Unique split-type hydraulic system features an independent pump and cylinder structure. The fully enclosed pump design eliminates the need for a breather hole, reducing hydraulic oil replacement frequency and extending pump lifespan.

### Specifications

Fabrication Capacity: 1"~12"(DN25~DN300, Φ33~Φ325)  
SCH10/40 Steel Pipe

Max Wall Thickness: 10mm

Output Speed: 23RPM

Gross Weight: 135kgs

Packing Size: 82\*47\*88cm

#### Groove Roller



1"~1 1/2"    2"~3"    3 1/2"~6"    8"-12"

#### Drive Roller



1"~1 1/2"    2"~3"    3 1/2"~6"    8"-12"

#### Drive Unit

Catalog No.	Phase	Power	Voltage	Frequency
900022	Single	1100W	220V	50/60Hz
900023	Single	1100W	110V	50/60Hz

#### Standard

Catalog No.	Description	N.W (kg)	Ref No.
911172	Drive roller 1"~1 1/2" (Φ33~Φ48)	1.13	①
911022	Drive roller 2"~3" (Φ60~Φ89)	1.30	②
911021	Drive roller 3 1/2"~6" (Φ101~Φ168)	1.30	③
911020	Drive roller 8"-12" (Φ219~Φ325)	1.40	④
912066	Groove roller 1"~1 1/2" (Φ33~Φ48)	0.45	⑤
912010	Groove roller 2"~3" (Φ60~Φ89)	0.45	⑥
912009	Groove roller 3 1/2"~6" (Φ101~Φ168)	0.45	⑦
912008	Groove roller 8"-12" (Φ219~Φ325)	0.45	⑧
998078	Pipe stand for 1"~12" (Φ33~Φ325)	6.90	⑨
998026	Foot Switch	1.50	⑩



1"~12"



## RG-5X

### Light Weight Roll Grooving Machine

#### Design Features

- Model RG-5X Electric Hydraulic Roll Grooving Machine is designed to roll grooves on steel pipes and stainless steel from 1"-12" (DN25~DN300) SCH10/SCH20, 1"-8" (DN25~DN200) SCH10/SCH40
- The RG-5X is highly versatile and suitable for a wide range of applications, including municipal piping and fire protection systems. It supports a broad size range, offers easy operation, simple maintenance, built for practical performance.
- The unique combination of the hydraulic feeding pump and the groove depth lock knob guarantees premium grooves and optimal efficiency. The frame is equipped with anti-collision guard rails for better protection.

#### Specifications

Fabrication Capacity:	1"~8" (DN25~DN200, $\Phi 33\sim\Phi 219$ ) SCH10/40 Steel Pipe
	10"~12" (DN250~DN300, $\Phi 254\sim\Phi 325$ ) SCH10/20 Steel Pipe
Max Wall Thickness:	8mm
Output Speed:	23R.P.M
Gross Weight:	118kgs
Packing Size:	75*40*70cm

#### Drive Unit

Catalog No.	Phase	Power	Voltage	Frequency
900050	Single	1100W	220V	50/60Hz
900051	Single	1100W	110V	50/60Hz

#### Standard

Catalog No.	Description	N.W (kg)	Ref No.
911106	Drive roller 1"-1½"	( $\Phi 33\sim\Phi 48$ )	1.15 ①
911007	Drive roller 2"-3"	( $\Phi 60\sim\Phi 89$ )	1.15 ②
911008	Drive roller 3½"-6"	( $\Phi 101\sim\Phi 168$ )	1.70 ③
911019	Drive roller 8"-12"	( $\Phi 219\sim\Phi 325$ )	1.70 ④
912041	Groove roller 1"-1½"	( $\Phi 33\sim\Phi 48$ )	0.90 ⑤
912042	Groove roller 2"-6"	( $\Phi 60\sim\Phi 168$ )	0.98 ⑥
912043	Groove roller 8"-12"	( $\Phi 219\sim\Phi 325$ )	0.90 ⑦
998078	Pipe stand for 1"~12"	( $\Phi 33\sim\Phi 325$ )	6.90 ⑧
998026	Foot Switch	1.50	⑨

#### Drive Roller



1"~1 ½"



2"~3"



3 ½"-6"



8"-12"

#### Groove Roller



1"~1 ½"



2"~6"



8"-12"

## RG-5A

### Versatile Roll Grooving Machine

1"~12"



## Specifications

Fabrication Capacity:	1"~8"(DN25~DN200,Φ33~Φ219) SCH10/40 Steel Pipe
	10"~12"(DN250~DN300,Φ254~Φ325) SCH10/20 Steel Pipe
Max Wall Thickness:	8mm
Output Speed:	23R.P.M
Gross Weight:	172kgs
Packing Size:	143*68*133cm

### Drive Unit

Catalog No.	Phase	Power	Voltage	Frequency
900052	Single	1100W	220V	50/60Hz
900053	Single	1100W	110V	50/60Hz

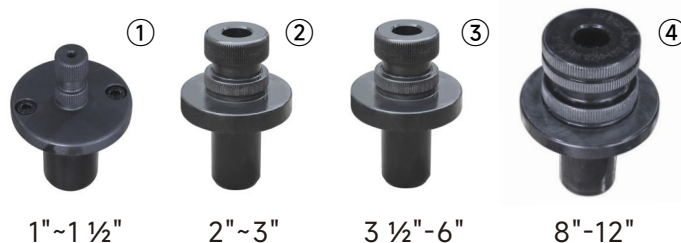
### Standard

Catalog No.	Description	N.W (kg)	Ref No.
911106	Drive roller 1"-1½" (Φ33~Φ48)	1.15	①
911007	Drive roller 2"-3" (Φ60~Φ89)	1.15	②
911008	Drive roller 3½"-6" (Φ101~Φ168)	1.70	③
911019	Drive roller 8"-12" (Φ219~Φ325)	1.70	④
912041	Groove roller 1"-1½" (Φ33~Φ48)	0.90	⑤
912042	Groove roller 2"-6" (Φ60~Φ168)	0.80	⑥
912043	Groove roller 8"-12" (Φ219~Φ325)	0.70	⑦
998078	Pipe stand for 1"~12" (Φ33~Φ325)	6.90	⑧
998026	Foot Switch	1.50	⑨

## Design Features

- Model RG-5A Roll Grooving Machine is designed to roll grooves on steel and stainless steel pipes from 1"-12", Equipped with a heavy-duty trolley with large mounting platform and an independent toolbox.
- The RG-5A is highly versatile and suitable for a wide range of applications, including municipal piping and fire protection systems. It supports a broad size range, offers easy operation, simple maintenance, built for practical performance.
- The unique combination of the hydraulic feeding pump and the groove depth lock knob guarantees premium grooves and optimal efficiency.

### Drive Roller



### Groove Roller





2"~16"



## RG-6X

Heavy-duty Roll Grooving Machine for Large-size pipes

### Design Features

- Model RG-6X Electric Hydraulic Roll Grooving Machine is designed to roll grooves on steel and stainless steel pipes from 2"-16" (DN50~DN400) SCH10 / SCH40.
- The compact large-size grooving machine boasts exceptional versatility and robust performance. Standard equipping heavy-duty adjustable pipe stand with ratchet structure.
- The interlocking structure of groove roller and drive roller ensures precise control of the pipe sealing surface length.
- Unique split-type hydraulic system features an independent pump and cylinder structure. The fully enclosed pump design eliminates the need for a breather hole, reducing hydraulic oil replacement frequency and extending pump lifespan.

### Specifications

Fabrication Capacity:	2"~12" SCH10/40 Steel Pipe 14"~16" SCH10/20 Steel Pipe
Max Wall Thickness:	10mm
Output Speed:	23R.P.M
Gross Weight:	170kgs
Packing Size:	92*48*87cm

#### Drive Unit

Catalog No.	Phase	Power	Voltage	Frequency
900060	Single	1100W	220V	50/60Hz
900061	Single	1100W	110V	50/60Hz

#### Standard

Catalog No.	Description	N.W (kg)	Ref No.
911022	Drive roller 2"~3" (Φ60~Φ89)	1.30	①
911021	Drive roller 3 1/2"~6" (Φ101~Φ168)	1.30	②
911020	Drive roller 8"~12" (Φ219~Φ325)	1.40	③
911143	Drive roller 14"~16" (Φ355~Φ426)	1.60	④
912010	Groove roller 2"~3" (Φ60~Φ89)	0.45	⑤
912009	Groove roller 3 1/2"~6" (Φ101~Φ168)	0.45	⑥
912008	Groove roller 8"~12" (Φ219~Φ325)	0.45	⑦
912052	Groove roller 14"~16" (Φ355~Φ426)	0.45	⑧
998026	Foot switch	1.50	⑨
998103	Pipe stand for 2"~16" (Φ60~Φ426)	33.0	⑩

#### Optional

Catalog No.	Description	N.W (kg)	Ref No.
912040*	Groove roller for SCH10 Anti-flare (2"~3")	0.45	⑤
912039*	Groove roller for SCH10 Anti-flare (3 1/2"~6")	0.45	⑥
912038*	Groove roller for SCH10 Anti-flare (8"~12")	0.45	⑦
912056*	Groove roller for SCH10 Anti-flare(14"~16")	0.45	⑧



#### Drive Roller



#### Groove Roller



## 8"~24"



## RG-4X

### Heavy-duty Roll Grooving Machine for Large-size pipes

#### Design Features

- Model RG-4X Roll Grooving Machine is designed to roll grooves on steel pipes and Stainless Steel from 8"-24" (DN200~DN600) SCH10 to SCH40. Ideal for use in both workshops and job sites for streamlined mass fabrication. Its exceptional strength and durability make it a reliable choice for heavy-duty applications.
- Unique split-type hydraulic system features an independent pump and cylinder structure. The fully enclosed pump design eliminates the need for a breather hole, reducing hydraulic oil replacement frequency and extending pump lifespan.
- The interlocking structure of groove roller and drive roller ensures precise control of the pipe sealing surface length.

#### Specifications

Fabrication Capacity:	8"~16" (DN200~DN400, $\Phi$ 219~ $\Phi$ 426) SCH10/40 Steel Pipe
	18"~24" (DN450~DN600, $\Phi$ 457~ $\Phi$ 630) SCH10/20 Steel Pipe
Max Wall Thickness:	13mm
Output Speed:	20R.P.M
Gross Weight:	285kgs
Packing Size:	110*75*99cm

\* Note: Optional roller set is required for grooving 6"/DN150 pipe

#### Drive Unit

Catalog No.	Phase	Power	Voltage	Frequency
900040	3PH	2200W	380V	50/60Hz
900041	3PH	2200W	440V	50/60Hz

#### Standard

Catalog No.	Description	N.W (kg)	Ref No.
911087	Drive roller 8"~12" ( $\Phi$ 219~ $\Phi$ 325)	3.5	①
911088	Drive roller 14"~16" ( $\Phi$ 355~ $\Phi$ 426)	3.5	②
911089	Drive roller 18"~24" ( $\Phi$ 457~ $\Phi$ 630)	3.5	③
912029	Groove roller 8"~12" ( $\Phi$ 219~ $\Phi$ 325)	2.0	④
912030	Groove roller 14"~16" ( $\Phi$ 355~ $\Phi$ 426)	2.0	⑤
912031	Groove roller 18"~24" ( $\Phi$ 457~ $\Phi$ 630)	2.0	⑥
998038	Pipe stand for 8"~24" ( $\Phi$ 219~ $\Phi$ 630)	33.0	⑦

#### Optional

Catalog No.	Description	N.W (kg)	Ref No.
911099*	AGS Groove roller 14"~24" ( $\Phi$ 355~ $\Phi$ 630)	3.50	⑨
912034*	AGS Drive roller 14"~24" ( $\Phi$ 355~ $\Phi$ 630)	2.00	⑩

#### Drive Roller

#### Groove Roller



①

8"~12"



②

14"~16"



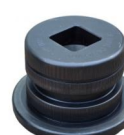
③

18"~24"



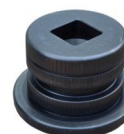
⑨

14"~24"



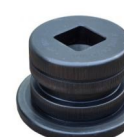
④

8"~12"



⑤

14"~16"



⑥

18"~24"



⑩

14"~24"

## 8"~32"



## RG-K32

### Heavy-duty Roll Grooving Machine for Large-size pipes

#### Design Features

- Model RG-K32 Roll Grooving Machine is designed to roll groove on steel pipes and Stainless Steel from 8"-32" (DN200~DN800) SCH10 to SCH40. Ideal for use in both workshops and job sites for streamlined mass fabrication. Its exceptional strength and durability make it a reliable choice for heavy-duty applications.
- Unique split-type hydraulic system features an independent pump and cylinder structure. The fully enclosed pump design eliminates the need for a breather hole, reducing hydraulic oil replacement frequency and extending pump lifespan.
- The interlocking structure of groove roller and drive roller ensures precise control of the pipe sealing surface length.

#### Specifications

Fabrication Capacity:	8"~16" (DN200~DN400, $\Phi$ 219~ $\Phi$ 426) SCH10/40 Steel Pipe
	18"~32" (DN450~DN800, $\Phi$ 457~ $\Phi$ 813) SCH10/20 Steel Pipe
Max Wall Thickness:	13mm
Output Speed:	20R.P.M
Gross Weight:	430kgs
Packing Size:	125*115*165cm



#### Drive Unit

Catalog No.	Phase	Power	Voltage	Frequency
XXXX	3PH	2200W	380V	50/60Hz
XXXX	3PH	2200W	440V	50/60Hz

#### Standard

Catalog No.	Description	N.W (kg)	Ref No.
911087	Drive roller 8"~12" ( $\Phi$ 219~ $\Phi$ 325)	3.5	①
911088	Drive roller 14"~16" ( $\Phi$ 355~ $\Phi$ 426)	3.5	②
911089	Drive roller 18"~24" ( $\Phi$ 457~ $\Phi$ 630)	3.5	③
911166	Drive roller 26"~32" ( $\Phi$ 660~ $\Phi$ 810)	3.5	④
912029	Groove roller 8"~12" ( $\Phi$ 219~ $\Phi$ 325)	2.0	⑤
912030	Groove roller 14"~16" ( $\Phi$ 355~ $\Phi$ 426)	2.0	⑥
912031	Groove roller 18"~24" ( $\Phi$ 457~ $\Phi$ 630)	2.0	⑦
912065	Groove roller 26"~32" ( $\Phi$ 660~ $\Phi$ 810)	2.0	⑧
998038	Pipe stand for 8"~32" ( $\Phi$ 219~ $\Phi$ 813)	35	⑨
998193	Pipe stabilizer	7.0	⑩

#### Drive Roller

#### Groove Roller



8"~12"



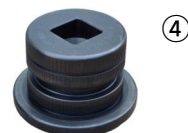
14"~16"



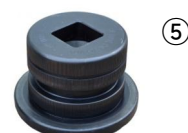
18"~24"



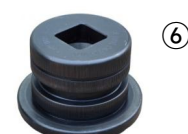
26"~32"



8"~12"



14"~16"



18"~24"



26"~32"



3/4"~8"



## RG-2T

### Inward and Outward Roll Grooving Machine

#### Design Features

- Model RG-2T Inward and Outward roll grooving machine is suitable to form inward and outward groove on 3/4"-8" aluminum pipes and stainless steel pipes, by changing the corresponding roller sets.
- Lightweight design with detachable handles, allowing easy one-person transport.
- Inbuilt high-performance gear reducing motor contributes compact size and low noise.
- The integrated hydraulic feeding pump with built-in depth adjustment screw and lock nut ensure high quality grooves and high efficiency.

#### Specifications

Fabrication Capacity:	DN20~DN200 (Outward groove) DN50~DN150 (Inward groove)
Max Wall Thickness:	Aluminum pipe (4mm) Stainless steel pipe (3mm)
Net Weight:	33kgs

#### Drive Unit

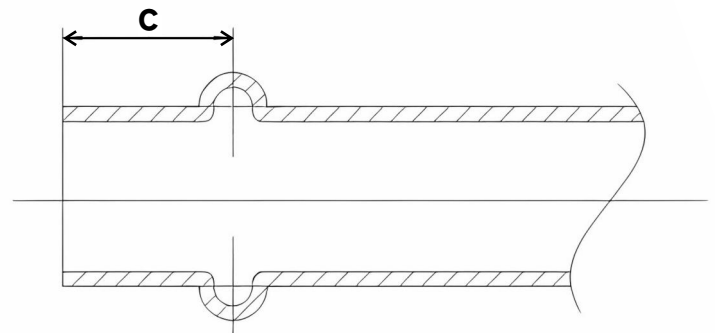
Catalog No.	Phase	Power	Voltage	Frequency
940920	1 Ph	700W	220V	50/60Hz
940921	3 Ph	700W	380V	50/60Hz

## Gonvex Groove Size :

DN20: **C**=23mm

DN40~DN200: **C**=29mm

DN50~DN200: **C**=35mm



\* "C" is the dimension from the center of the groove to the end of the pipe. It can be customized according to requirements.

## 2"~12"



## AG-2X

### Automatic Roll Grooving Machine

#### Design Features

- Built for heavy-duty grooving jobs, model AG-2X is ideal for high-volume grooving of large-diameter steel pipes in workshop and construction sites.
  - Equipped with a high-power motor and high-strength gearbox, the machine is built for long-term, continuous operation.
  - Simple push-button operations ensures easy and efficient grooving operation experience.
  - Heavy-duty groove rollers and drive rollers with interlocking structure ensures precise control of the pipe sealing surface length.
  - Unique depth limiting device, the groove roller automatically resets after the groove depth is reached.
- Note: the guide wheel can be optionally set to automatically move back and forth for added convenience and speed.

#### Specifications

Fabrication Capacity:	2"~12"(DN50~DN300,Φ60~Φ325)
	(Optional) 2"~16"(DN50~DN400,Φ60~Φ426)
Max Pipe Wall Thickness:	10mm
Output Speed:	23 R.P.M
Motor:	380V/ 750W 3Ph
Gross Weight:	820kgs
Packing Size:	125*100*150cm

#### Drive Unit

Catalog No.	Phase	Power	Voltage	Frequency
999003	3Ph	750W	380V	50/60Hz

#### Standard

Catalog No.	Description	N.W (kg)	Ref No.
911022	Drive roller 2"~3" (Φ60~Φ89)	1.30	①
911021	Drive roller 3½"~6" (Φ101~Φ168)	1.30	②
911020	Drive roller 8"-12" (Φ219~Φ325)	1.40	③
912010	Groove roller 2"~3" (Φ60~Φ89)	0.45	④
912009	Groove roller 3½"~6" (Φ101~Φ168)	0.45	⑤
912008	Groove roller 8"-12" (Φ219~Φ325)	0.45	⑥
998164	Pipe stand for 2"~12" (Φ60~Φ325)	12.0	⑦

#### Optional

Catalog No.	Description	N.W (kg)	Ref No.
911170	Drive roller 14"~16" (Φ355~Φ426)	1.60	①
912052	Drive roller 14"~16" (Φ355~Φ426)	1.60	②

#### Drive Roller



#### Groove Roller



## 8"~24"



## AG-4X

### Automatic Roll Grooving Machine

#### Design Features

- Built for heavy-duty grooving jobs, model AG-4X is ideal for high-volume grooving of large-diameter steel pipes in workshop and construction sites.
- Equipped with a high-power motor and high-strength gearbox, the machine is built for long-term, continuous operation.
- Simple push-button operations ensures easy and efficient grooving operation experience.
- Heavy-duty groove rollers and drive rollers with interlocking structure ensures precise control of the pipe sealing surface length.
- Unique depth limiting device, the groove roller automatically resets after the groove depth is reached.  
Note: the guide wheel can be optionally set to automatically move back and forth for added convenience and speed.

#### Specifications

Fabrication Capacity:	8"~24"(DN200~DN600,Φ219~Φ630)
Max Pipe Wall Thickness:	13mm
Output Speed:	23R.P.M
Motor:	380V/ 2200W 3Ph
Gross Weight:	1240kgs
Packing Size:	195*110*120cm

#### Drive Unit

Catalog No.	Phase	Power	Voltage	Frequency
999020	3Ph	2200W	380V	50/60Hz

#### Standard

Catalog No.	Description	N.W (kg)	Ref No.
911087	Drive roller 8"~12" (Φ219~Φ325)	3.50	①
911088	Drive roller 14"~16" (Φ355~Φ426)	3.50	②
911089	Drive roller 18"~24" (Φ457~Φ630)	3.50	③
912029	Groove roller 8"~12" (Φ219~Φ325)	1.40	④
912030	Groove roller 14"~16" (Φ355~Φ426)	1.40	⑤
912031	Groove roller 18"~24" (Φ457~Φ630)	1.40	⑥
998038	Pipe stand for 8"~24" (Φ219~Φ630)	33.0	⑦

#### Optional

Catalog No.	Description	N.W (kg)	Ref No.
911099*	AGS Groove roller 14"~24" (Φ355~Φ630)	3.50	⑨
912034*	AGS Drive roller 14"~24" (Φ355~Φ630)	2.00	⑩

#### Drive Roller



#### Groove Roller





**2"~12"**
**2"~24"**

## GF-2X GF-4X

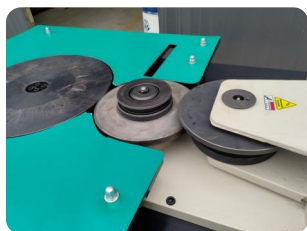
### Pipe Fitting Roll Grooving Machine

#### Design Features

- GF series pipe fitting roll grooving machines are capable of grooving a wide range of steel and stainless steel pipe fittings —such as equal and reducing tees, 90-degree and 45-degree elbows, with max size up to 24 inch
- Built-in spindle motor and hydraulic station, can automatically complete the grooving work. It is an ideal fabrication tool for pipe fitting manufacturers, at workshops and job sites
- With a patented grooving process and specially engineered grooving components, the machine can reliably control the sealing surface length to meet high-quality standards
- High-quality hydraulic seals and electrical parts from trusted brands guarantee reliable performance and long-lasting operation efficiency

#### Specifications

Fabrication Capacity:	2"~12"(Φ60~Φ325) <b>GF-2X</b>
	2"~24"(Φ60~Φ630) <b>GF-4X</b>
Max Pipe Wall Thickness:	10mm <b>GF-2X</b>
	13mm <b>GF-4X</b>
Output Speed:	23R.M.P
Motor:	2200W 3Ph
Gross Weight:	1050kgs <b>GF-2X</b>
	1150kgs <b>GF-4X</b>
Packing Size:	195*110*120cm <b>GF-2X</b>
	195*110*120cm <b>GF-4X</b>

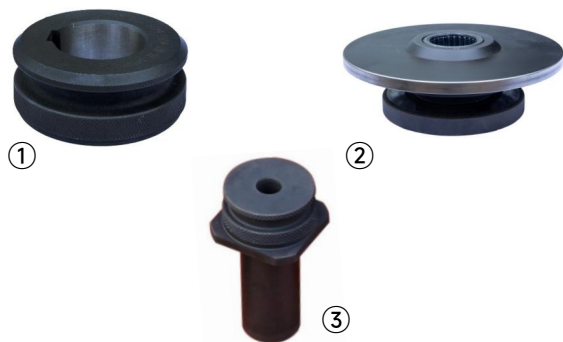


#### Drive Unit

Catalog No.	Model	Power	Voltage	Frequency
999071	GF-2X	2200W	380V/3PH	50/60Hz
999073	GF-4X	2200W	380V/3PH	50/60Hz

#### Standard

Catalog No.	Description	N.W (kg)	Ref No.
911223	Drive roller 1½"	(Φ48)	1.5 ①
911189	Drive roller 2"-2½"	(Φ60~Φ73)	1.6 ①
911190	Drive roller 3"-3½"	(Φ89~Φ101)	2.1 ①
911191	Drive roller 4"-5"	(Φ114~Φ141)	1.2 ①
911192	Drive roller 6"	(Φ168)	3.1 ①
911193	Drive roller 8"-12"	(Φ219~Φ325)	3.5 ①
911116	Drive roller 14"-16"	(Φ356~Φ406)	4 ①
911117	Drive roller 18"-24"	(Φ457~Φ610)	2.1 ①
912083	Groove roller 2"-5"	(Φ60~Φ141)	15 ②
912084	Groove roller 6"	(Φ168)	13 ②
912085	Groove roller 8"-12"	(Φ219~Φ325)	15 ②
912045	Drive roller 14"-16"	(Φ356~Φ406)	15 ②
912046	Drive roller 18"-24"	(Φ457~Φ610)	15 ②
998026	Foot Switch	1.50	③



2"~12"

2"~24"

## GM-2X GM-4X

### Electric Hydraulic Groove End Reforming Machine

#### Design Features

- These machines are suitable for 2" ~ 24" steel pipe fitting ends flare shaping process. It can be used for Tee, elbow, reducer and other pipe fittings shaping, suitable for workshop and construction site use. Built-in hydraulic station can automatically complete the shaping work.
- All models equipped with branded hydraulic power units and electrical components to ensure stable and efficient long-term operation.
- One-step reforming without causing any damage to the pipe fitting surface.  
Button control with standard foot switch, offering simple, convenient operation and enhanced safety.

#### Specifications

Fabrication Capacity:	2"~12"(Φ60~Φ325) <b>GM-2X</b> 2"~24"(Φ60~Φ630) <b>GM-4X</b>
Max Pipe Wall Thickness:	10mm
Motor:	2200W 3Ph <b>GM-2X</b> 2200W 3Ph <b>GM-4X</b>
Gross Weight:	760kgs <b>GM-2X</b> 1160kgs <b>GM-4X</b>
Packing Size:	170*95*115cm <b>GM-2X</b> 195*110*120cm <b>GM-4X</b>

#### Drive Unit

Catalog No.	Model	Power	Voltage	Frequency
999061	GM-2X	2200W	380V/3PH	50/60Hz
999077	GM-4X	2200W	380V/3PH	50/60Hz

\*Support voltage customization

#### Standard

Catalog No.	Description	For Model	N.W (kg)
998131	Reforming dies	Φ60.3 GM-2X / 4X	0.25
998132	Reforming dies	Φ73 GM-2X / 4X	0.35
998133	Reforming dies	Φ88.9 GM-2X / 4X	0.50
998134	Reforming dies	Φ114.3 GM-2X / 4X	0.60
998135	Reforming dies	Φ141.3 GM-2X / 4X	0.70
998136	Reforming dies	Φ168.3 GM-2X / 4X	0.80
998137	Reforming dies	Φ216.3 GM-2X / 4X	1.00
998138	Reforming dies	Φ219.1 GM-2X / 4X	1.20
998139	Reforming dies	Φ267.4 GM-2X / 4X	1.50
998140	Reforming dies	Φ273 GM-2X / 4X	1.60
998141	Reforming dies	Φ318.5 GM-2X / 4X	1.80
998142	Reforming dies	Φ323.9 GM-2X / 4X	2.00
998176	Reforming dies	Φ355 GM-4X	
998177	Reforming dies	Φ381 GM-4X	
998178	Reforming dies	Φ406 GM-4X	
998179	Reforming dies	Φ457 GM-4X	
998180	Reforming dies	Φ508 GM-4X	
998181	Reforming dies	Φ559 GM-4X	
998182	Reforming dies	Φ610 GM-4X	
998026	Foot Switch		1.50



#### Reforming dies



## 1"~12"



1"~6"



8"~12"

## RG-1M

Combination Roll Groover  
Patented Designe 1"-12"

### Design Features

- Can be used manually or with a power drive. Ideal for on-site or flexible grooving tasks
- Featuring a patented design, the RG-1M is a versatile roll grooving tool that supports both manual operation and power drive through a threading machine. Suitable for both batch production and flexible on-site operations.
- Heavy-duty design for fire-fighting pipelines size range 1"~12" (DN25~DN300), SCH10 to SCH40.
- Three-stage gear reduction for smooth, labor-saving operation
- Compact design with a portable toolbox, allowing easy manual operation even in confined spaces

### Specifications

Fabrication Capacity:	1"~8"(DN25~DN200,Φ33~Φ219) SCH10/40 Steel Pipe
	10"~12"(DN250~DN300,Φ254~Φ325) SCH10/20 Steel Pipe
Max Wall Thickness:	8mm
Operation radius:	210mm / 8 1/4"
Gross Weight:	25kgs
Packing Size:	50*22*53cm

### Drive Unit

Catalog No.	Description	N.W (kg)	Size(cm)
900000	1" - 12" roll grooving assembly	17.7	50*22*53

### Standard

Catalog No.	Description	N.W (kg)	Ref No.
911011	Drive roller 1" (Φ33)	0.70	①
911010	Drive roller 1 1/4"~1 1/2" (Φ42~Φ48)	0.70	②
911009	Drive roller 2"~6" (Φ60~Φ168)	0.70	③
911008	Drive roller 8"~12" (Φ219~Φ325)	0.70	④
912016	Groove roller 1"~6" (Φ33~Φ168)	0.30	⑤
912005	Groove roller 8"~12" (Φ219~Φ325)	0.30	⑥
998036	Ratchet with socket	1.50	⑦
911016	Support arms (x2) for 300	1.40	⑧
911015	Drive bar adaptor	2.50	⑨
998034	HDPE tool case	2.70	⑩

### Optional

Catalog No.	Description	N.W (kg)	Ref No.
998114	Bracket set for horizontal threading machine	1.00	(11)

### Drive Roller & Groove Roller





## 1"~6"



## RG-2M

Combination Roll Groover  
Patented Designe 1"-6"

### Design Features

- Can be used manually or with a power drive. Ideal for on-site or flexible grooving tasks
- Featuring a patented design, the RG-2M is a versatile roll grooving tool that supports both manual operation and power drive through a threading machine. Suitable for both batch production and flexible on-site operations.
- Light-duty design for fire-fighting pipelines size range 1"~6" (DN25~DN150), SCH10 to SCH40.
- Three-stage gear reduction for smooth, labor-saving operation
- Compact design with a portable toolbox, allowing easy manual operation even in confined spaces

### Specifications

Fabrication Capacity:	1"~4" (DN25~DN100, Φ33~Φ114) SCH10/40 Steel Pipe 5"~6" (DN125~DN150, Φ139~Φ168) SCH10/20 Steel Pipe
Max Wall Thickness:	6mm
Operation radius:	210mm / 8 1/4"
Gross Weight:	15kgs
Packing Size:	50*22*53cm

#### Drive Unit

Catalog No.	Description	N.W (kg)	Size(cm)
900001	1"-6" roll grooving assembly	12.5	50*22*53

#### Standard

Catalog No.	Description	N.W (kg)	Ref No.
911010	Drive roller 1 1/4"~1 1/2" (Φ42~Φ48)	0.7	①
911009	Drive roller 2"~6" (Φ60~Φ168)	0.7	①
912016	Groove roller 1"~6" (Φ33~Φ168)	0.3	②
998036	Ratchet with socket	1.65	③

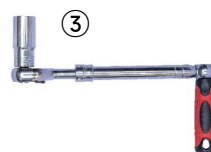
#### Optional

Catalog No.	Description	N.W (kg)	Ref No.
911011	Drive roller 1" (Φ33)	0.7	①
911016	Support arms (2pcs) for 300 power drive	1.4	④
911015	Drive bar adaptor	1.6	⑤
998114	Bracket set for horizontal threading machine	1.0	⑥
998034	HDPE tool case	2.7	⑦

#### Drive Roller



#### Groove Roller



1 1/4"~6"



⑦

## RG-3M

Combination Roll Groover  
Compact Design 1 1/4"-6"

### Design Features

- Can be used manually or with a power drive. Ideal for on-site or flexible grooving tasks
- Featuring a compact design, the RG-3M is a versatile roll grooving tool that supports both manual operation and power drive through a threading machine. Suitable for both batch production and flexible on-site operations.
- Light-duty design for fire-fighting pipelines size range 1 1/4"-6" (DN32~DN150), SCH10 to SCH40.
- Two-stage gear reduction for smooth, labor-saving operation
- Compact design with a portable toolbox, allowing easy manual operation even in confined spaces

### Specifications

Fabrication Capacity:	1 1/4"~4" (DN32~DN100, Φ33~Φ114) SCH10/40 Steel Pipe 5"~6" (DN125~DN150, Φ139~Φ168) SCH10/20 Steel Pipe
Max Wall Thickness:	6mm
Operation radius:	210mm / 8 1/4"
Gross Weight:	12kgs
Packing Size:	49*22*40cm

#### Drive Unit

Catalog No.	Description	N.W (kg)	Size(cm)
900001	1 1/4"-6" roll grooving assembly	12	49*22*40

#### Standard

Catalog No.	Description	N.W (kg)	Ref No.
911010	Drive roller 1 1/4"~6" (Φ42~Φ168)	0.70	①
912016	Groove roller 1"~6" (Φ33~Φ168)	0.30	②
998036	Ratchet with socket	1.65	③

#### Optional

Catalog No.	Description	N.W (kg)	Ref No.
911016	Support arms (2pcs) for 300	1.40	④
911015	Drive bar adaptor	1.6	⑤
998114	Bracket set for horizontal threading machine	1.00	⑥
998034	HDPE tool case	2.70	⑦

#### Drive Roller

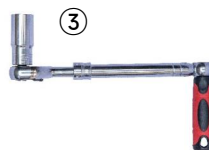


1 1/4" ~ 6"

#### Groove Roller



1"~6"



2"~8"



## RG-H1X

### Manual Hydraulic Roll Grooving Attachment

#### Design Features

- The RG-H1X standard-duty roll grooving attachment is designed to work with 300 power drive and threading machines, offering a flexible grooving solution, suitable for 2" to 8" steel pipes.
- Supplied with a standard mounting steel plate, which can be customized to fit threading machines from different brands —offering flexible installation options.
- The integrated hydraulic feeding pump and groove depth lock nut ensure high quality grooves and high efficiency.

#### Specifications

Fabrication Capacity:	2"~4"(DN50~DN100,Φ60~Φ114) SCH10/SCH40 steel pipe
	5"~8"(DN125~DN200,Φ139~Φ219) SCH10/SCH20 steel pipe
Max Wall Thickness:	6mm
Gross Weight:	29kgs
Packing Size:	38*42*47cm

#### Drive Unit

Catalog No.	Description	N.W (kg)	Size(cm)
900002	2"-8" hydraulic roll grooving assembly	18	38*42*47

#### Standard

Catalog No.	Description	N.W (kg)	Ref No.
911074	Drive roller 2"~6" (Φ60~Φ168)	1.30	①
911075	Drive roller 8" (Φ219)	1.30	②
912018	Groove roller 2"~6" (Φ60~Φ168)	0.45	③
912032	Groove roller 8" (Φ219)	0.45	④
911018	Drive bar adapter	2.30	⑤

#### Drive Roller



#### Groove Roller



\*Adapter plate to fit on the threading machines

\*Customization is available



\*Working with traditional threading machine



## 2"~12"



## RG-H2X

### Manual Hydraulic Roll Grooving Attachment

#### Design Features

- The RG-H2X heavy-duty roll grooving attachment is designed to work with 300 power drives, offering a flexible grooving solution, suitable for 2" to 12" steel pipes, SCH40 standard.
- The interlocking structure between the groove roller and drive roller ensures precise control of the pipe sealing surface length.
- Unique split-type hydraulic system features an independent pump and cylinder structure. The fully enclosed pump design eliminates the need for a breather hole, reducing hydraulic oil replacement frequency and extending pump lifespan.

#### Specifications

Fabrication Capacity:	2"~12"(DN50~DN300,Φ60~Φ325) SCH10/40 Steel Pipe
Max Wall Thickness:	10mm
Gross Weight:	75kgs
Packing Size:	45*20*65cm

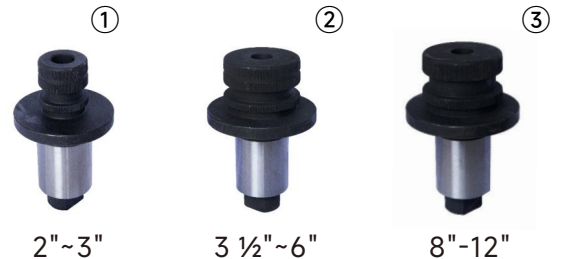
#### Drive Unit

Catalog No.	Description	N.W (kg)	Size(cm)
900003	2"-12" roll grooving attachment	75	45*20*65

#### Standard

Catalog No.	Description	N.W (kg)	Ref No.
911022	Drive roller 2"~3" (Φ60~Φ89)	1.30	①
911021	Drive roller 3½"~6" (Φ101~Φ168)	1.30	②
911020	Drive roller 8"~12" (Φ219~Φ325)	1.40	③
912010	Groove roller 2"~3" (Φ60~Φ89)	0.45	④
912009	Groove roller 3½"~6" (Φ101~Φ168)	0.45	⑤
912008	Groove roller 8"~12" (Φ219~Φ325)	0.45	⑥
911018	Drive bar adapter	2.30	⑦
913006	Support Bench	2.20	⑧

#### Drive Roller



#### Groove Roller



**2"~12"**
**8"~32"**

## CG-2X CG-4X

### Electric Hydraulic Groove Cutting Machine

#### Design Features

- Designed specifically for cutting grooves into heavy-walled pipes without flaring, pipe size range of 2"-32", where conventional roll grooving is not applicable. Suitable for applications as in mining pipelines, power plants, petrochemical facilities, and heavy-duty mechanical systems.
- Robust structure suitable for both on-site and workshop use, ensuring reliable performance under demanding conditions. The efficient and reliable hydraulic system ensures long-term operation under harsh working conditions.
- Equipped with a range of specially designed HSS cutting tools for efficient grooves cutting and extended service life. Comes standard with heavy-duty ratchet and hydraulic pipe stands, respectively matched to CG-2X and CG-4X machines for easy handling of large and heavy pipes.

#### Specifications

#### CG-2X

Fabrication Capacity:	2"~12"(DN50~DN300,Φ60~Φ325)
Pipe Wall Thickness:	6-35mm
Output Speed:	23 R.P.M
Motor:	1100W 1Ph / 750W 3Ph
Gross Weight:	340kgs
Packing Size:	120*90*140cm

#### CG-4X

Fabrication Capacity:	8"~32"(DN200~DN800,Φ219~Φ813)
Pipe Wall Thickness:	6-35mm
Output Speed:	19 R.P.M
Motor:	2200W 3Ph
Gross Weight:	450 kgs
Packing Size:	120*110*175cm

#### Drive Unit

Catalog No.	Phase	Power	Voltage	Frequency
998003/998012	1Ph / 3Ph	1100/750W	220/380V	50/60Hz
998042	3Ph	2200W	380V	50/60Hz

#### Standard

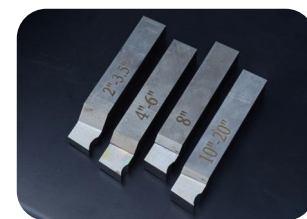
Catalog No.	Description	N.W (kg)	Ref No.
922203	Drive roll 2"~3" (Φ60~Φ89)	5	①
911204	Drive roll 3 1/2"~12" (Φ101~Φ324)	6.7	①
911208	Drive roll 8"~32" (Φ219~Φ813)	13.2	①
998149	Cutting tool 2"~3 1/2" (Φ60~Φ101)	0.2	②
998150	Cutting tool 4"~6" (Φ114~Φ168)	0.2	②
998154	Cutting tool 8" (Φ219)	0.2	②
998151	Cutting tool 10"~20" (Φ273~Φ508)	0.2	②
998152	Cutting tool 22"~32" (Φ558~Φ813)	0.2	②
998153	Foot Switch (only for GC-2X)	1.50	

#### Drive Roll



2"-3" for CG-2X  
3 1/2"-12" for CG-2X  
8"-32" for CG-4X

#### Cutting tools



2"-3 1/2" for CG2  
4"-6" for CG2  
8" for CG-2X & CG-4X  
10"-20" for CG-2X & CG-4X  
22"-32" for CG4



## Groove Meter ( $\pi$ ruler / tape)

### Design Features

- The ideal tool for quick and reliable groove inspection, supports brand customization
- Durable aluminum alloy housing with stainless steel measuring tape. Black steel tape with high-contrast laser markings for easy reading and long-time usage without wear
- Dual-scale design on the reverse side for direct reading of pipe O.D. and flare width — no need to divide by  $\pi$
- Measurement range: 1"-24" / DN25-DN600 /  $\varnothing$ 33- $\varnothing$ 610



Front - groove bottom diameter tolerance



Back - O.D. direct reading

## Groove Depth Gauge

### Design Features

- The Gruvmaster Groove Gauge is designed to preset the groove depth working together with the stop nut on the machine
- Crafted from stainless steel, the four-piece gauge set is strung on a leather braid for convenient carrying. Clearly marked sizes for easy identification
- Customized logo available upon request—ideal for market promotional use
- Measurement range: 1"-24" / DN25-DN600 /  $\varnothing$ 33- $\varnothing$ 610  
Gauge sizes in the set can be configured based on actual requirements





2"~8"



## CM-8

### Electric Hydraulic Pipe Cutting Machine

#### Design Features

- The CM-8 is a cold cutting solution for steel, stainless steel pipes, powered by high performance low-noise gear reduction motor in compact size, with cutting blade actuated by the hydraulic system.
- No ignition, microchip or rough edges during cutting operation. Ideal for use in workshops, job sites.
- Unique split-type hydraulic system features an independent pump and cylinder structure. The fully enclosed pump design eliminates the need for a breather hole, reducing hydraulic oil replacement frequency and extending pump lifespan. The hydraulic system supports fast feed-in, significantly improving work efficiency

#### Specifications

Fabrication Capacity:	2"~8"(DN50~DN200,Φ60~Φ219) Steel Pipe
Max Wall Thickness:	8mm
Output Speed:	30R.P.M
Gross Weight:	84kgs
Packing Size:	67*47*75cm

#### Drive Unit

Catalog No.	Phase	Power	Voltage	Frequency
900070	Single	700W	220V	50/60Hz
900071	Single	700W	110V	50/60Hz

#### Standard

Catalog No.	Description	N.W (kg)	Ref No.
998030	Pipe stand for 2"~8" (Φ60~Φ219)	4	①
912019	Cutting blade (standard)	1.25	②
912058	Cutting blade (heavy-duty)	1.3	②

①



②



1/2" ~ 8"

## CM-8X

### Electric Hydraulic Pipe Cutting Machine

#### Design Features

- The CM-8X is a cold cutting solution for steel, stainless steel pipes, powered by high performance low-noise gear reduction motor in compact size, with cutting blade actuated by the hydraulic system.
- No ignition, microchip or rough edges during cutting operation. Ideal for use in workshops, job sites.
- Unique split-type hydraulic system features an independent pump and cylinder structure. The fully enclosed pump design eliminates the need for a breather hole, reducing hydraulic oil replacement frequency and extending pump lifespan. The hydraulic system supports fast feed-in, significantly improving work efficiency
- Built-in roller support for small pipes, supports pipe cutting down to 1/2". Supports customization to Min. pipe size 15mm

#### Specifications

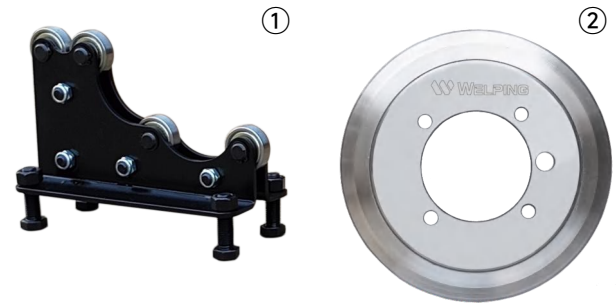
Fabrication Capacity:	1/2"~8"(DN15~DN200,Φ20~Φ219) Steel Pipe
Max Wall Thickness:	6mm
Output Speed:	30RPM
Gross Weight:	68kgs
Packing Size:	65*45*70cm

#### Drive Unit

Catalog No.	Phase	Power	Voltage	Frequency
900072	Single	700W	220V	50/60Hz
900073	Single	700W	110V	50/60Hz

#### Standard

Catalog No.	Description	N.W (kg)	Ref No.
998033	Pipe stand for 1/2"~8" (Φ20~Φ219)	6	①
912019	Cutting blade (standard)	1.25	②
912058	Cutting blade (heavy-duty)	1.3	②





2"~12"

## CM-12

### Electric Hydraulic Pipe Cutting Machine

#### Design Features

- The CM-12 is a cold cutting solution for steel, stainless steel pipes, powered by high performance low-noise gear reduction motor in compact size, with cutting blade actuated by the hydraulic system.
- No ignition, microchip or rough edges during cutting operation. Ideal for use in workshops, job sites.
- Unique split-type hydraulic system features an independent pump and cylinder structure. The fully enclosed pump design eliminates the need for a breather hole, reducing hydraulic oil replacement frequency and extending pump lifespan. The hydraulic system supports fast feed-in, significantly improving work efficiency

#### Specifications

Fabrication Capacity:	2"~12"(DN50~DN300, $\Phi 60 \sim \Phi 325$ ) Steel Pipe
Max Wall Thickness:	10mm
Output Speed:	23RPM
Gross Weight:	120kgs
Packing Size:	67*60*100cm



#### Drive Unit

Catalog No.	Phase	Power	Voltage	Frequency
900080	Single	1100W	220V	50/60Hz
900081	Single	1100W	110V	50/60Hz

#### Standard

Catalog No.	Description	N.W (kg)	Ref No.
998041	Pipe stand for 2"~12" ( $\Phi 60 \sim \Phi 325$ )	4.0	①
912019	Cutting blade (standard)	1.25	②
912058	Cutting blade (heavy-duty)	1.3	②





8"~20"

## CM-20

### Electric Hydraulic Pipe Cutting Machine

#### Design Features

- The CM-20 is a cold cutting solution for large-size steel, stainless steel pipes, powered by high performance low-noise gear reduction motor in compact size, with cutting blade actuated by the hydraulic system.
- No ignition, microchip or rough edges during cutting operation. Ideal for use in workshops, job sites.
- Unique split-type hydraulic system features an independent pump and cylinder structure. The fully enclosed pump design eliminates the need for a breather hole, reducing hydraulic oil replacement frequency and extending pump lifespan. The hydraulic system supports fast feed-in, significantly improving work efficiency
- Built-in roller supports for pipe sizes of 8"-14" and 14"-20"  
Built-in transportation wheels with pull handle

#### Specifications

Fabrication Capacity:	8"~20" (DN200~DN500, $\Phi 219\sim\Phi 530$ ) Steel Pipe
Max Wall Thickness:	12mm
Output Speed:	23RPM
Gross Weight:	200kgs
Packing Size:	92*80*110cm

#### Drive Unit

Catalog No.	Phase	Power	Voltage	Frequency
900090	Single	1100W	220V	50/60Hz
900091	Single	1100W	110V	50/60Hz

#### Standard

Catalog No.	Description	N.W (kg)	Ref No.
998102	Pipe stand for 8"~20" ( $\Phi 219\sim\Phi 530$ )	45	①
912019	Cutting blade (standard)	1.25	②
912058	Cutting blade (heavy-duty)	1.3	②





## VH-4S, 6S, 8S Hinged Pipe Cutter

### Design Features

- The hinged Pipe Cutter, innovative design, requires just 4 inches (102 mm) of clearance around the pipe.
- With an efficient handle swing of only 90° to 110°, it provides smooth operation in tight spaces.
- The hinge design allows the 4-wheel cutter to open and easily position around the pipe.
- Versatile and reliable, it works effectively anywhere—whether in ditches, underwater, overhead, or in pipe racks.
- VH6S and VH8S can come with a torque extension bar (optional), enabling two-person operation.

### Pipe Cutters Selection Chart

Catalog No.	Model No.	Pipe capacity		Cutter wheel	Application	Length		Weight	
		in-nom.	OD (mm)			inch	mm	lbs	kg
810020	VH4S	2"-4"	60-125	S4	Sch40 steel and stainless	22	559	14.3	6.5
810030	VH6S	4"-6"	114-182	S6	Sch40 steel and stainless	28	711	22.7	10.3
810040	VH8S	6"-8"	168-240	S8	Sch40 steel and stainless	32	813	31.1	14.1
	VH6SH	4"-6"	114-182	S6	Sch40 steel and stainless			24.9	11.3
	VH8SH	6"-8"	168-240	S8	Sch40 steel and stainless			33.3	15.1



114mm



## HC-1X

### Pipe Hole Cutting Machine

#### Design Features

- The Model HC-1X Pipe Hole Cutter is designed to cut holes up to 4" into steel pipe.
- The HC-1X has a 5/8" capacity drill chuck to accommodate all sizes of hole saws and hole saw arbors. An integral motor and gear reduction optimizes performance of large diameter hole saws.
- The two feed handles allows the operator to use the Pipe Hole Cutter from either the left or right side. A rotating leveling vial in the base allows repeated holes to line up.
- Only 11" high, the compact design, allows the HC-1X to be used in tight quarters or above in- stalled pipe close to ceilings.

#### Specifications

Cutting Capacity:	up to 4"(114mm)
Pipe Mounting Capacity:	1 1/4" - 8" (32mm-200 mm)
Drill Chuck Capacity:	1/16" - 5/8" (2mm-16 mm)
Drill Chuck Speed:	240RPM
Current Draw Rating:	8 Amps @ 220-240V 15 Amps @ 120V
Height:	10.63" (27 cm)
Length:	12.59" (32 cm)
Width:	11.02" (28 cm)
Weight:	28 lbs. (12.8 Kg)

#### Drive Unit

Catalog No.	Phase	Power	Voltage	Frequency
910010	Single	1800W	220V	50/60Hz
910011	Single	1800W	110V	50/60Hz





**114mm**



## HC-2X

### Pipe Hole Cutting Machine

#### Design Features

- The Model HC-2X Pipe Hole Cutter is designed to cut holes up to 4" into steel pipe.
- The HC-2X has a 5/8" capacity drill chuck to accommodate all sizes of hole saws and hole saw arbors.
- Equipped with a high-performance low-noise gear reduction motor to offer high torque.
- The two feed handles allows the operator to use the Pipe Hole Cutter from either the left or right side. A rotating leveling vial in the base allows repeated holes to line up.

#### Specifications

Cutting Capacity:	up to 4"(114mm)
Pipe Mounting Capacity:	1 1/4" - 8" (32mm-200 mm)
Drill Chuck Capacity:	1/16" - 5/8" (2mm-16 mm)
Drill Chuck Speed:	110RPM
Current Draw Rating:	8 Amps @ 220-240V 15 Amps @ 120V
Packing Size:	32*32*63CM
Weight:	46 lbs. (21 Kg)

#### Drive Unit

Catalog No.	Phase	Power	Voltage	Frequency
910020	Single	700W	220V	50/60Hz
910021	Single	700W	110V	50/60Hz



## HS Series Hole Saw

### Design Features

- A specialized tool designed for cutting precise, round holes in a variety of materials.
- Come in various sizes from 14mm to 152mm, making them suitable for cutting holes in wood, metal, plastic, drywall.
- The motor's built-in high-performance gear reduction system enables a smaller form factor and quieter operation.
- Made from high-speed steel (HSS), BI-metal, hole saws offer durability and long-lasting performance.

### Ordering Info. for Hole Saws

Model	Dia.	Material	Model	Dia.	Material
HS-14	14mm	M42/M3	HS-59	59mm	M42/M3
HS-16	16mm	M42/M3	HS-60	60mm	M42/M3
HS-17	17mm	M42/M3	HS-65	65mm	M42/M3
HS-19	19mm	M42/M3	HS-67	67mm	M42/M3
HS-20	20mm	M42/M3	HS-68	68mm	M42/M3
HS-21	21mm	M42/M3	HS-70	70mm	M42/M3
HS-22	22mm	M42/M3	HS-73	73mm	M42/M3
HS-24	24mm	M42/M3	HS-76	76mm	M42/M3
HS-25	25mm	M42/M3	HS-79	79mm	M42/M3
HS-27	27mm	M42/M3	HS-83	83mm	M42/M3
HS-29	29mm	M42/M3	HS-86	86mm	M42/M3
HS-30	30mm	M42/M3	HS-89	89mm	M42/M3
HS-32	32mm	M42/M3	HS-92	92mm	M42/M3
HS-33	33mm	M42/M3	HS-95	95mm	M42/M3
HS-35	35mm	M42/M3	HS-98	98mm	M42/M3
HS-37	37mm	M42/M3	HS-102	102mm	M42/M3
HS-38	38mm	M42/M3	HS-105	105mm	M42/M3
HS-40	40mm	M42/M3	HS-108	108mm	M42/M3
HS-41	41mm	M42/M3	HS-111	111mm	M42/M3
HS-43	43mm	M42/M3	HS-114	114mm	M42/M3
HS-44	44mm	M42/M3	HS-121	121mm	M42/M3
HS-46	46mm	M42/M3	HS-127	127mm	M42/M3
HS-48	48mm	M42/M3	HS-133	133mm	M42/M3
HS-51	51mm	M42/M3	HS-140	140mm	M42/M3
HS-54	54mm	M42/M3	HS-146	146mm	M42/M3
HS-57	57mm	M42/M3	HS-152	152mm	M42/M3



Hole saws arbors

### Ordering Info. for Arbors

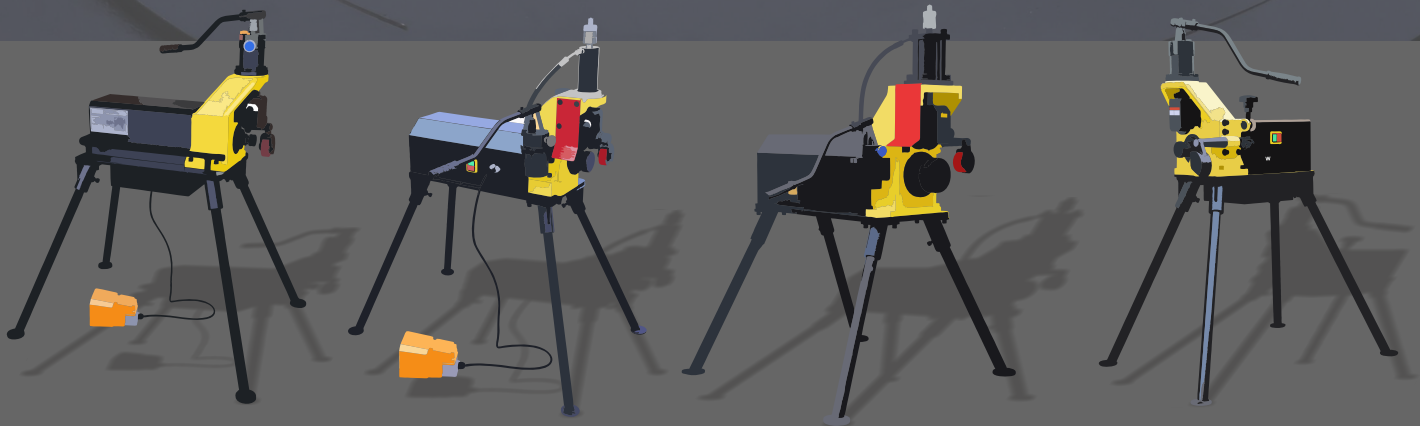
Model	Dia.	Material	Material
HSA-S	For 14-30mm	HSS 4341	HSS 4242
HSA-L	For 32-152mm	HSS 4341	HSS 4242

Note 1: Cutting length of the hole saws  
 55.5mm for hole saw from 14mm to 19mm;  
 49.5mm for 20mm to 35mm hole saws;  
 43.5mm for 37mm to 152mm hole saws

Note 2: Cutting depth can be customized as per requirements



# Your One-stop Partner for Pipe Grooving Solutions



 **WELPING**®

 **GRUV**®  
MASTER

**Hangzhou Welping Machinery Equipment Co., Ltd**

Phone: 00 86 571 89332538

E-mail: [top@welping.cn](mailto:top@welping.cn)

Web: [welpingtool.com](http://welpingtool.com) [www.gruvmastertools.com](http://www.gruvmastertools.com)

Office address: Room B301, Chamber of Commerce Building, 185 Jincheng Road,  
Xiaoshan District, Hangzhou, China

Factory address: No. 288 Jinyuan Road, Puyang Town, Xiaoshan District,  
Hangzhou, China