

# Pick To Light System

## ---SETP\_Label\_V41

Pick to Light

E-commerce  
Warehouse



Intelligent  
Manufacturing



Intelligent  
Warehousing



# Graining Point



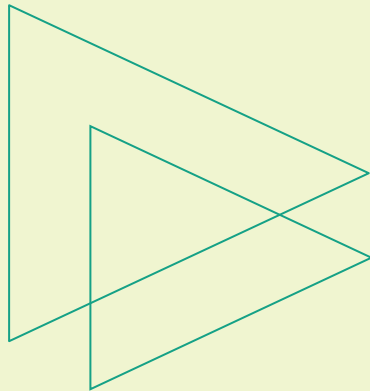
- Wireless communication
- Easy to install and move
- Colorful, uniform and distinct indicator lights (1 power indicator +1 status indicator)
- 1 color headlight button (Support bright colors)
- Installation method: Bracket wire clamping/track installation

# Summary of Pick to Light System

Electronic label picking system is a logistics auxiliary operating system developed by advanced electronic technology and communication technology, usually used in the sorting link of warehousing or modern logistics center, with fast picking speed, high efficiency, low error rate, paperless, standardized operation characteristics. As an advanced means of operation, the electronic label assisted picking system is more efficient when used in conjunction with the warehouse management system (WMS) or other logistics management systems.

Electronic label picking system is a group of electronic equipment installed on the shelf storage, through the control of computers and software, through the indicator light or digital display as an auxiliary tool, to guide the picking workers to complete the work correctly, quickly and easily.

# Characteristics and Benefits



Improve operation speed and quality



Easy and rapid deployment



Achieve paperless  
standardized operations



Shorten operator training time



Reduce labor costs, management  
costs, etc

# Pick to Light

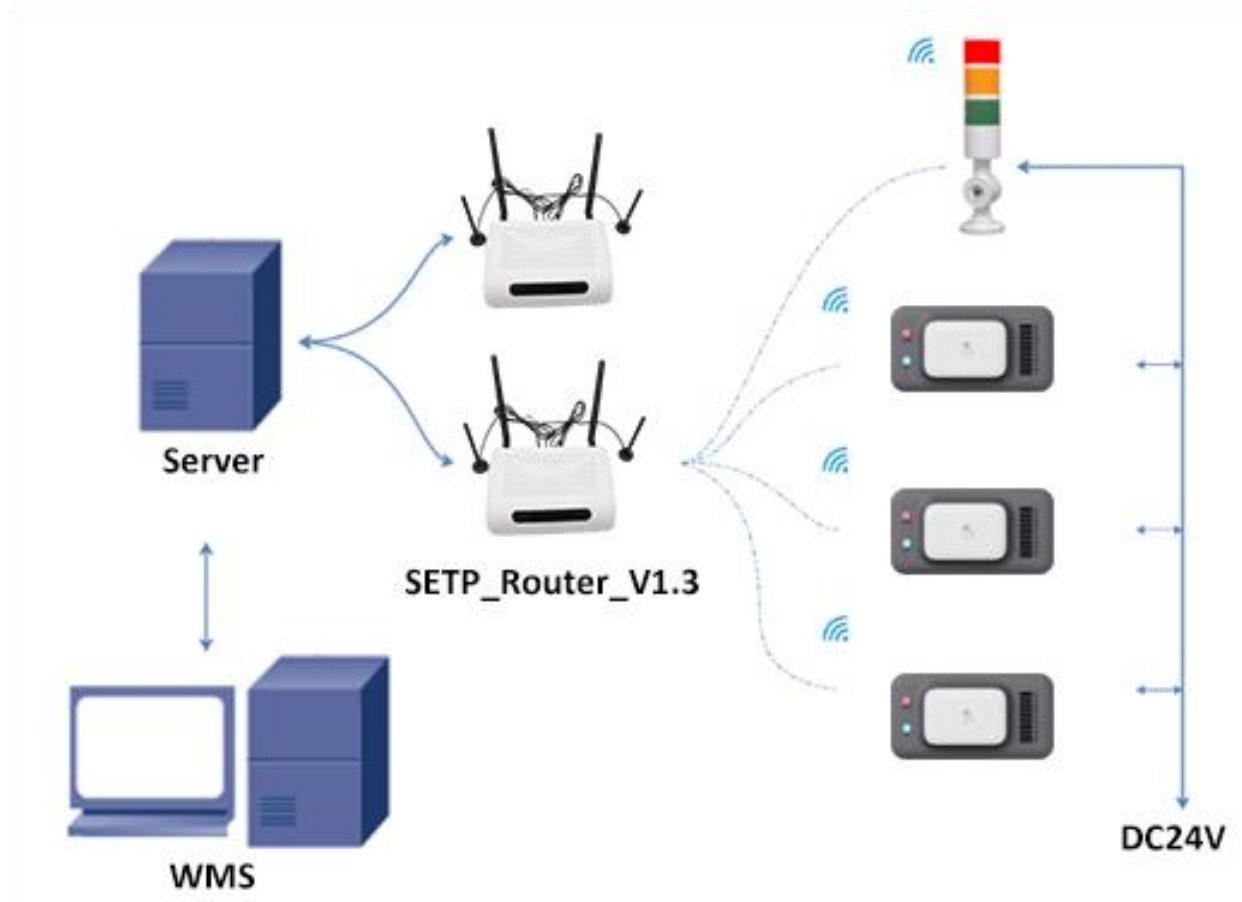
Receive the data information sent by the router and analyze it, make corresponding instructions, and click the button to complete the picking.

- The wireless communication distance is 30 meters
- The wireless communication rate is 200kbps
- Customized two-way communication protocol, safe and reliable
- Data software and hardware verification
- Dimensions: Length, width and thickness: 60\*34\*23.1mm
- 1 color headlight button (can illuminate bright colors)
- Two LED indicator lights (one for power and one for status)
- RGB full-color uniform lighting with good visibility
- Intelligent scanning code pairing and binding



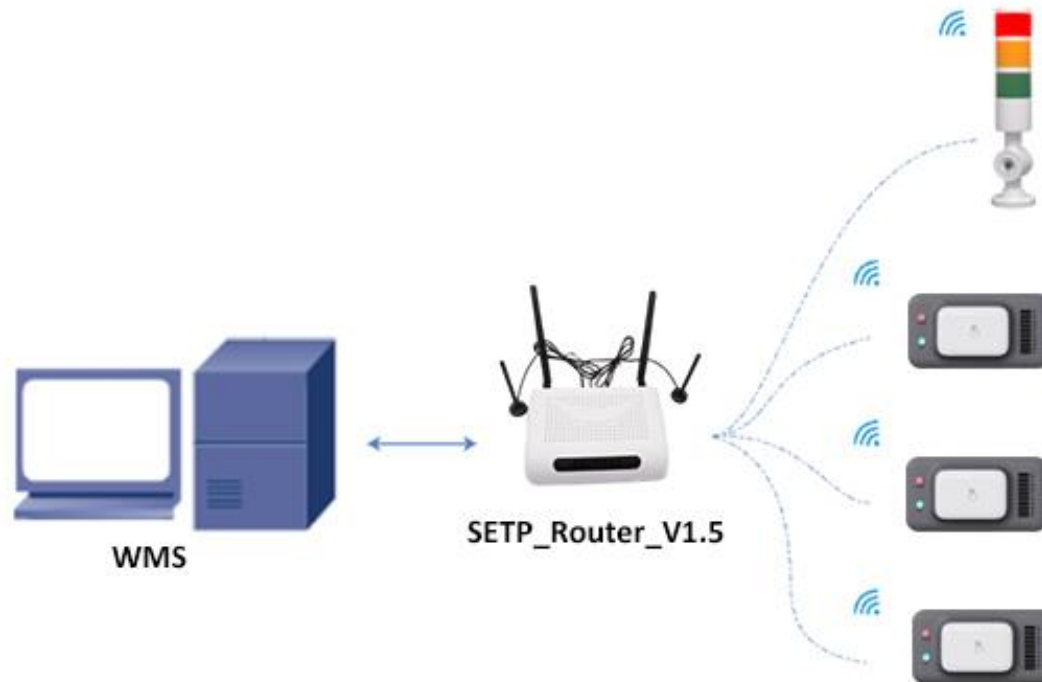
**Model: SETP\_Label\_V41**

# System Structure V1.3



The electronic label picking system is to send instructions through the PC or scanning gun, forward through the router, and control the LED light or screen on the electronic label to guide the picker to accurately and quickly pick up the corresponding goods to the designated location.

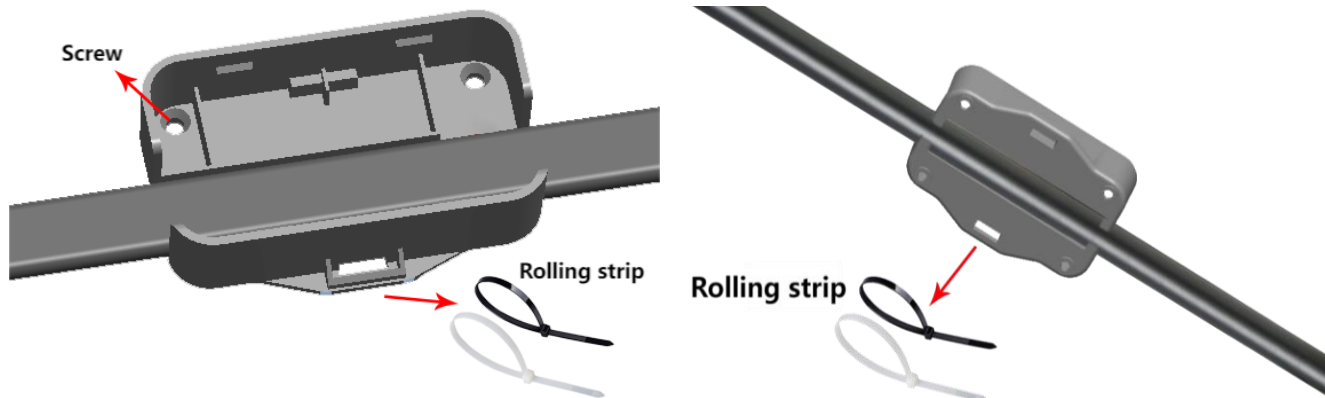
# System structure V1.5



Note: V1.5 version of the base station built-in server program, the user only sends the operation instructions to this base station to achieve data transfer, the use is simpler.

# Installation Method

Bracket wire clamping + cable tie fixation (screws or rolled tape fixed to the shelf, rolled tape fixed to the steel pipe)

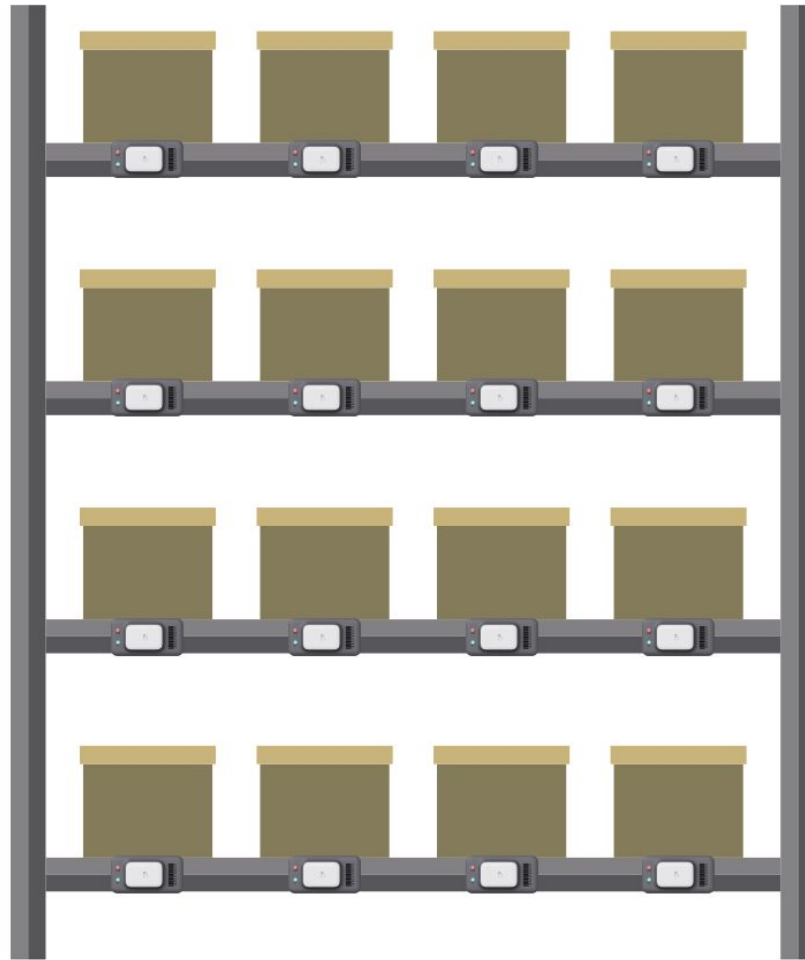


# Installation Method

## Track installation



# Application Case



# Router

Receive the operation instructions issued by the PC, analyze them and then send them to the electronic tag through RF.

- Wireless communication distance 30m
- Wireless communication rate 200kbps
- Network communication rate 10/100 Mbps
- Custom two-way data communication protocol to ensure data transmission speed and accuracy
- There is no upper limit for covering electronic labels
- Supports synchronization of multiple routers
- Parallel communication, safe and fast
- Omnidirectional transmission, no dead ends
- Support online software upgrade
- Operating system: linux
- Supports POE power supply or external DC12V power supply



Tag controller

**Model: SETP\_Router\_V1.3**

The V1.3 base station has an independent routing function and needs to cooperate with the label server.

**Model: SETP\_Router\_V1.5**

The V1.5 version base station comes with its own server program and can directly accept instructions.

# Tower Light with Buzzer

The wireless receive the data information sent by the router and analyze it, make the corresponding instructions, and cooperate with the picking lane prompt.

- Use with label picking
- All three lights (red, yellow and green) can be controlled independently
- Wireless communication 868M, frequency hopping communication
- Communication rate 50K
- Covering a communication radius of more than 30 meters
- Multi-color LED highlight indicator
- 24V external DC power supply, maximum current <math><0.2A</math>
- Built-in buzzer, can be controlled by command

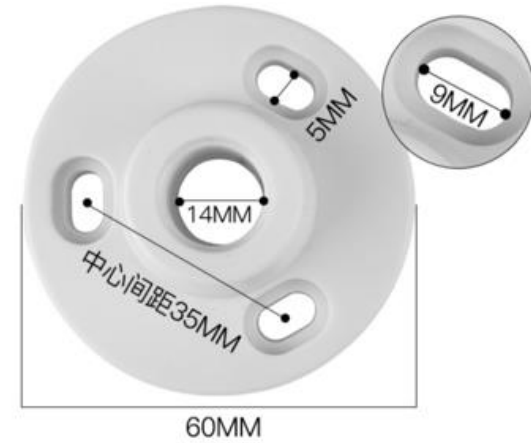
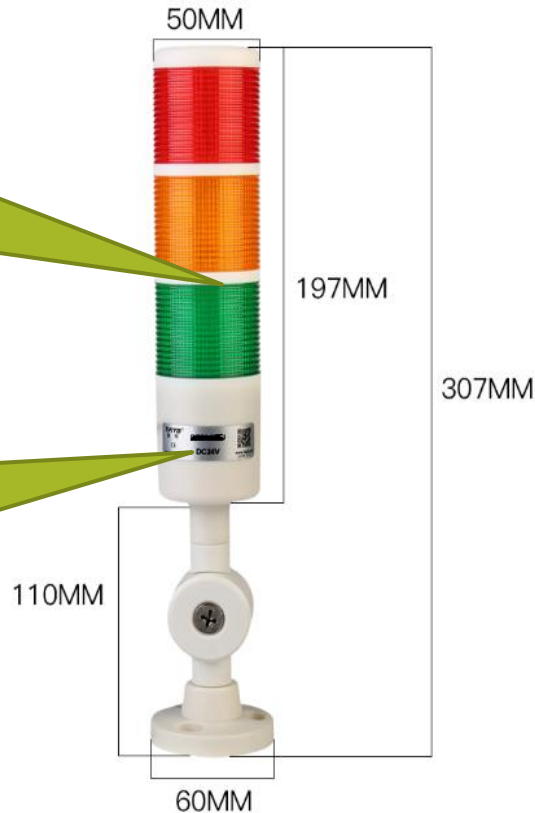


**Tower Light with Buzzer**  
**Model: SETP\_Label\_V9**

# Tower Light with Buzzer

All three lights  
can be  
controlled  
independently

Magnetic  
proximity  
triggers  
registration



DC5.5 \* 2.1

Power supply DC24V, <0.2A

# Manual

Initial: Set the server and label parameters

---

Step 1: The customer sends the pick information to the label server

Step 2: The server parses the instruction requirements and wirelessly lights up the laneway lights and labels

Step 3: Select goods according to the lighted label and press the confirm button to turn off the light. The screen content is updated to the result of the operation

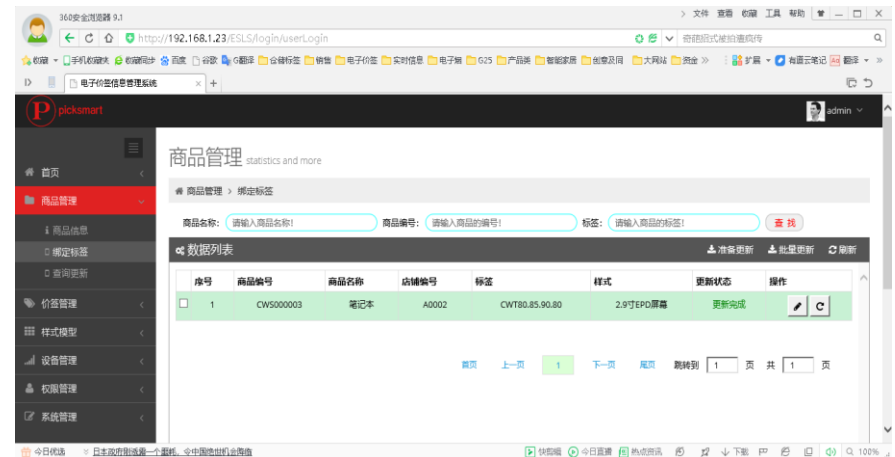
# System Functions

- Supports label registration
- A single light lights the interface
- Batch lighting
- Light result query
- Key feedback
- Tag inspection
- Label inspection result Query
- Support online software upgrade
- Large coverage radius, no limit to the number of nodes
- Intelligent routing transmission, sufficient communication tolerance
- Rich and perfect management background, the status of all equipment in the master

# Multifunctional Operation Interface

Through the background management interface, information is comprehensively controlled and operated.

- Multi-account management background
- Web side software, enter the URL can remotely control the label
- Real-time view of base station and label status
- Label display style template custom
- User commodity data table import
- Quick brush and light operation
- Simple Interfacing interface  
(HTTP & Json)
- The system software supports deployment of cloud and LAN private servers



# Contact information

## Dalian Sertag Technology Co., Ltd

*Experience the power of a solution that's uniquely yours. Let's collaborate and create a tailor-made pick to light system that transforms the way you work.*

- Email: [sales@sertag.com](mailto:sales@sertag.com)
- Tel: 86-13664268735 / 86-411-84641910
- WhatsApp: +86 13664268735
- Skype: [epaperlabel@hotmail.com](mailto:epaperlabel@hotmail.com)
- Website: [www.eslmfg.com](http://www.eslmfg.com)
- [www.lightpicksystems.com](http://www.lightpicksystems.com)
- Online Shop: [www.einkser.com](http://www.einkser.com)

