

Pick To Light System

---SETP_Label_V40

Pick to Light

E-commerce
Warehouse



Intelligent
Manufacturing



Intelligent
Warehousing



Graining Point



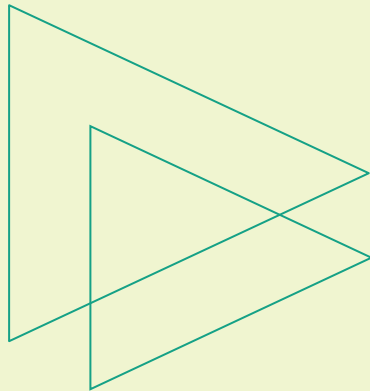
- 3-bit 0.4 inch high light LED digital tube display
- Wireless communication
- Key and three-color high-lighted LED indicator
- Supports 24V external power supply
- Ultra-low power consumption

Summary of Pick to Light System

Electronic label picking system is a logistics auxiliary operating system developed by advanced electronic technology and communication technology, usually used in the sorting link of warehousing or modern logistics center, with fast picking speed, high efficiency, low error rate, paperless, standardized operation characteristics. As an advanced means of operation, the electronic label assisted picking system is more efficient when used in conjunction with the warehouse management system (WMS) or other logistics management systems.

Electronic label picking system is a group of electronic equipment installed on the shelf storage, through the control of computers and software, through the indicator light or digital display as an auxiliary tool, to guide the picking workers to complete the work correctly, quickly and easily.

Characteristics and Benefits



Improve operation speed and quality



Easy and rapid deployment



Achieve paperless
standardized operations



Shorten operator training time



Reduce labor costs, management
costs, etc

Pick to Light

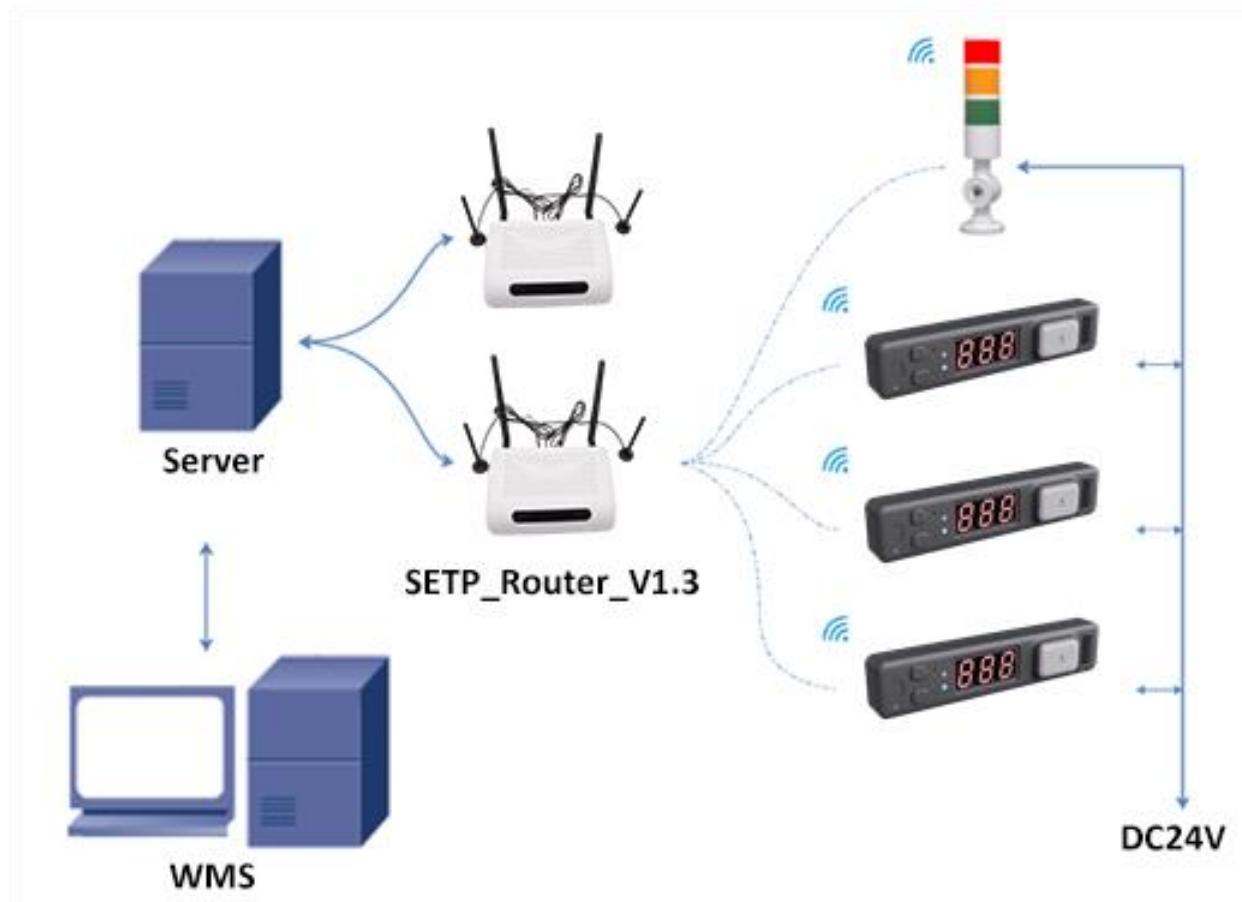
Receive the data information sent by the router and analyze it, make corresponding instructions, and click the button to complete the picking.

- 3*0.4 "LED digital tube highlights
- Comes with 4 buttons, 1 color headlight button (can illuminate bright colors)
- The label ID is displayed on the front
- Length width: 140*30*23.1mm
- Power supply: 24V external power supply
- Communication rate 200K/50K
- Wireless communication 868M, frequency hopping communication
- Covering a communication radius of more than 30 meters
- Multi-color LED highlight indicator(1 power supply +1 status indicator)
- Custom two-way communication protocol, safe and reliable
- Interface protocol: HTTP & Json



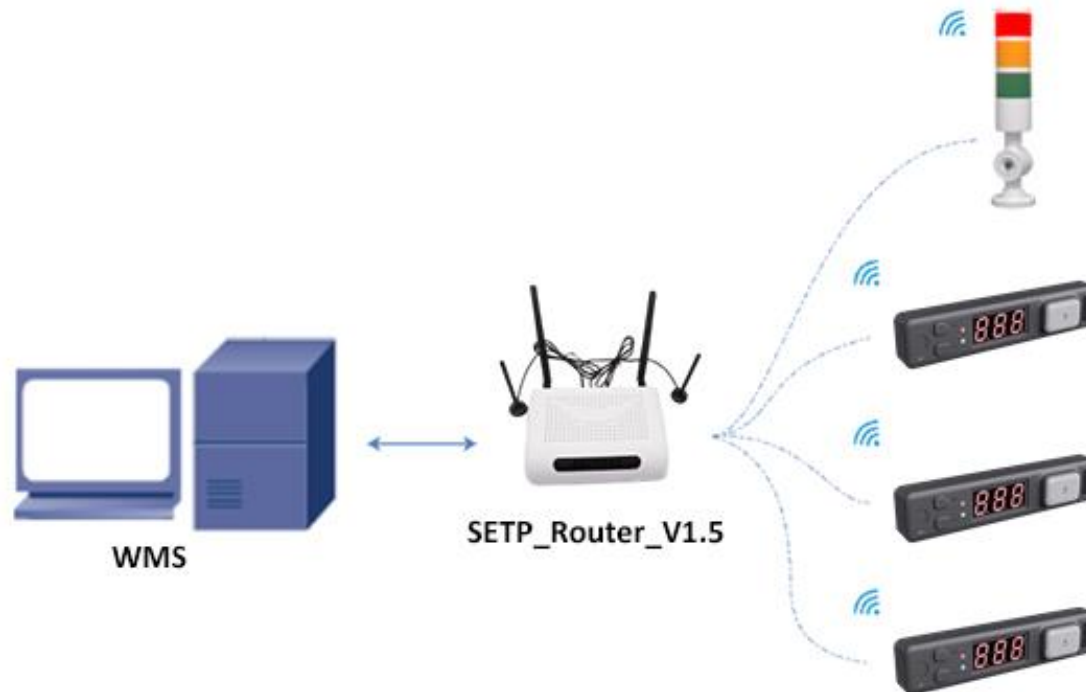
Model: SETP_Label_V40

System Structure V1.3



The electronic label picking system is to send instructions through the PC or scanning gun, forward through the router, and control the LED light or screen on the electronic label to guide the picker to accurately and quickly pick up the corresponding goods to the designated location.

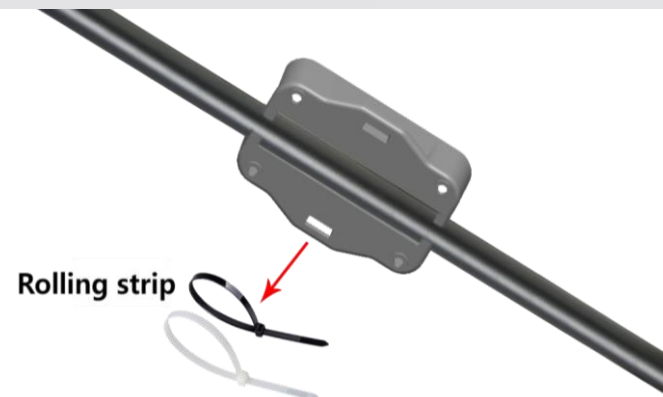
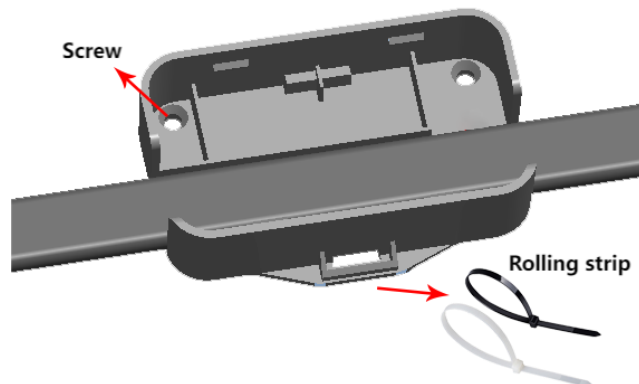
System Structure V1.5



Note: V1.5 version of the base station built-in server program, the user only sends the operation instructions to this base station to achieve data transfer, the use is simpler.

Installation Method

Bracket wire clamping + cable tie fixation (screws or rolled tape fixed to the shelf, rolled tape fixed to the steel pipe)



Installation Method

Track installation



Application Case



Router

Receive the operation instructions issued by the PC, analyze them and then send them to the electronic tag through RF.

- Wireless communication distance 30m
- Wireless communication rate 200kbps
- Network communication rate 10/100 Mbps
- Custom two-way data communication protocol to ensure data transmission speed and accuracy
- There is no upper limit for covering electronic labels
- Supports synchronization of multiple routers
- Parallel communication, safe and fast
- Omnidirectional transmission, no dead ends
- Support online software upgrade
- Operating system: linux
- Supports POE power supply or external DC12V power supply



Tag controller

Model: SETP_Router_V1.3

The V1.3 base station has an independent routing function and needs to cooperate with the label server.

Model: SETP_Router_V1.5

The V1.5 version base station comes with its own server program and can directly accept instructions.

Tower Light with Buzzer

Wirelessly receive the data information sent by the router and analyze it, make corresponding instructions and cooperate with the picking lane prompts.

- Used with label picking
- All three lights (red, yellow and green) can be controlled independently
- Wireless communication 868M, frequency hopping communication
- Communication rate 50K
- Covering a communication radius of more than 30 meters
- Multi-color LED highlight indicator light
- 24V external DC power supply, maximum current <math><0.2A</math>
- Built-in buzzer, controllable by command

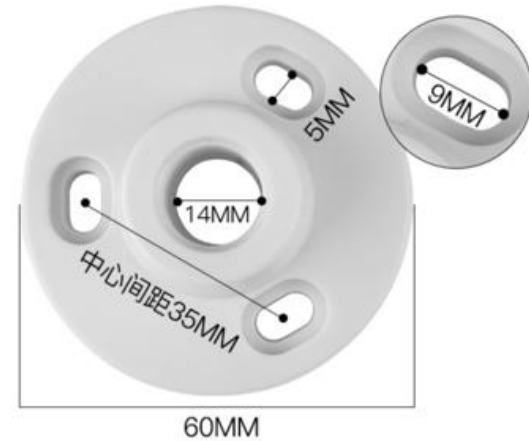
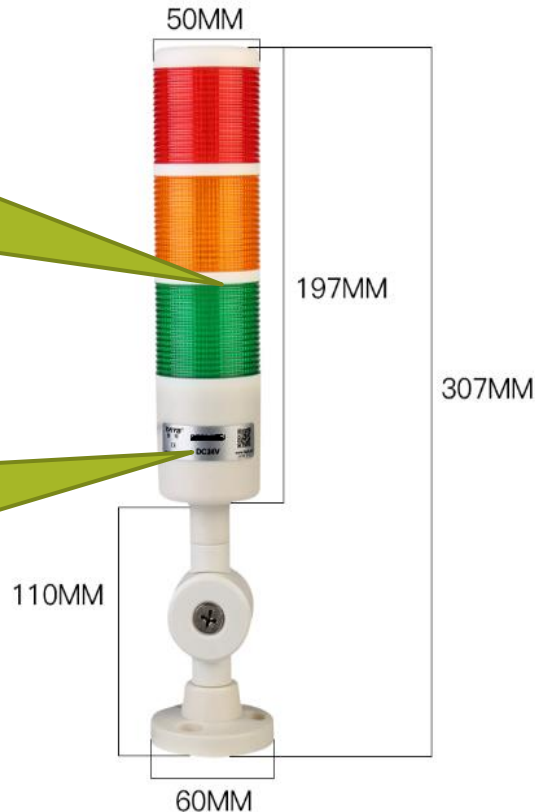


Tower Light with Buzzer
Model: SETP_Label_V9

Roadway light

All three lights
can be
controlled
independently

Magnetic
proximity
triggers
registration



DC5.5 * 2.1
Power supply DC24V, <0.2A

Manual

Initial: Set the server and label parameters

Step 1: The customer sends the picking information to the label server

Step 2: The server parses the command requirements and wirelessly lights up the tunnel lights and tags

Step 3: Pick items according to the illuminated label and press the confirmation button to turn off the light, and the screen content is updated with the result after the operation.

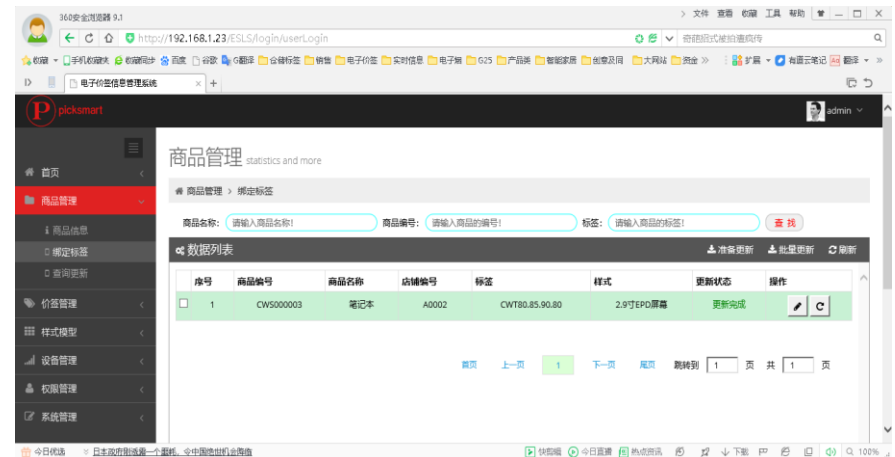
System Functions

- Supports tag registration usage
- Single light lighting interface
- Light up in batches
- Light up result query
- Button feedback
- Tag inspection
- Tag inspection result query
- Support online software upgrade
- Large coverage radius, unlimited number of nodes
- Intelligent routing and transmission, sufficient communication tolerance
- Rich and complete management background, the status of each device is under control

Multifunctional Operation Interface

Through the background management interface, information is comprehensively controlled and operated.

- Multi-account management background
- Web side software, enter the URL can remotely control the label
- Real-time view of base station and label status
- Label display style template custom
- User commodity data table import
- Quick brush and light operation
- Simple Interfacing interface
(HTTP & Json)
- The system software supports deployment of cloud and LAN private servers



Contact information

Dalian Sertag Technology Co., Ltd

Experience the power of a solution that's uniquely yours. Let's collaborate and create a tailor-made pick to light system that transforms the way you work.

- Email: sales@sertag.com
- Tel: 86-13664268735 / 86-411-84641910
- WhatsApp: +86 13664268735
- Skype: epaperlabel@hotmail.com
- Website: www.eslmfg.com
- www.lightpicksystems.com
- Online Shop: www.einkser.com

