

# Pick to Light SETP\_Label\_V40 Specification

DALIAN SERTAG TECHNOLOGY CO., LTD

# Sertag

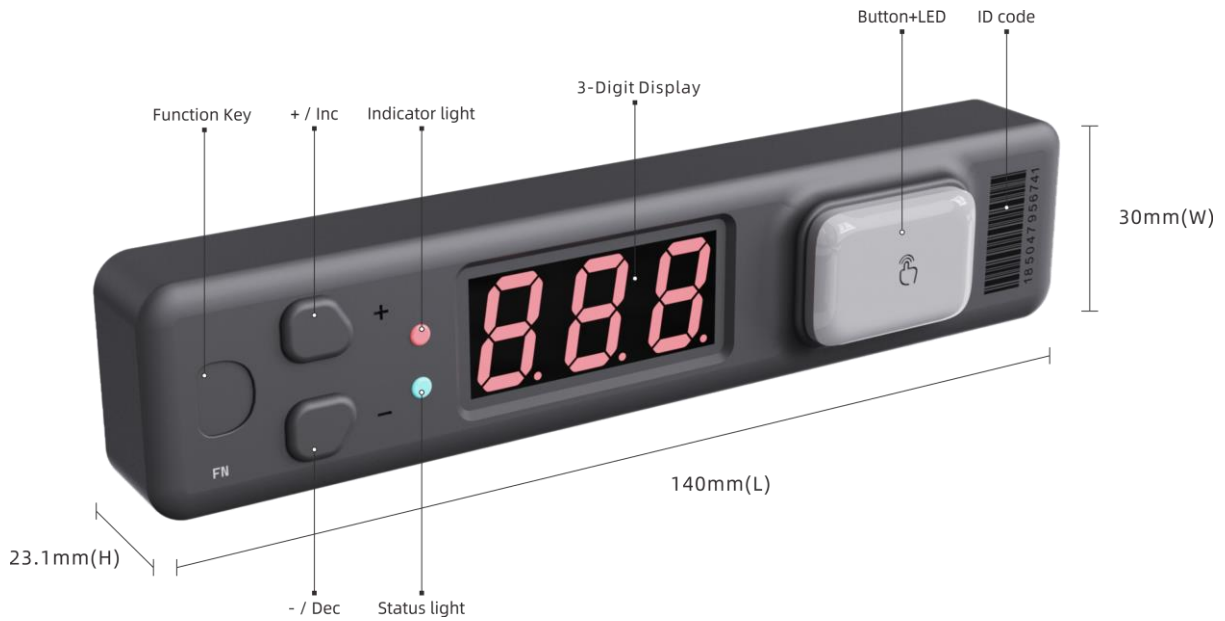
## Pick to Light SETP\_Label\_V40

### SETP\_Label\_V40

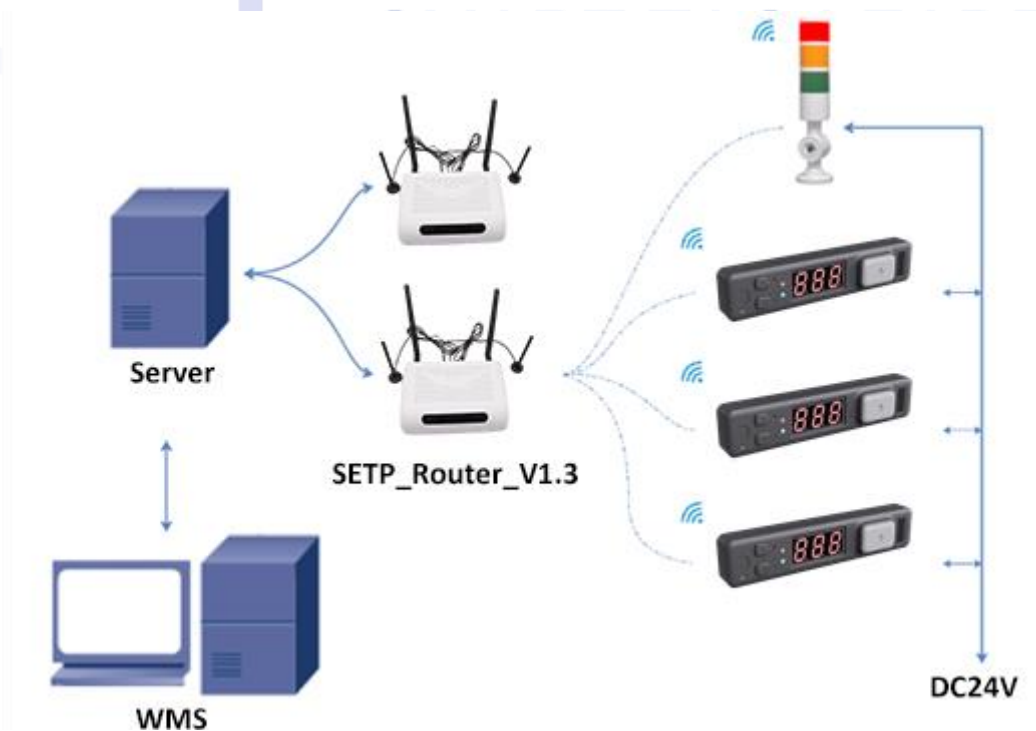


|                          |   |
|--------------------------|---|
| Product Model            | <b>SETP_Label_V40</b>   |
| Dimension (mm)           | 140*30*23.1   |
| Screen                   | Digital tube display (3-digit 0.4 inch)                         |
| Digital Tube Color       | red   |
| Display Content          | 0-999   |
| Appearance Color         | Grey  |
| Key Press                | 3   |
| Illuminated Button       | 1 color light button<br>(Support bright colors)                 |
| Indicator Light          | Two LED indicator lights<br>(one for power and one for status)  |
| Light Color              | Seven colors<br>(red/green/blue/yellow/purple/white/light blue) |
| Power Supply Mode        | DC 24V  |
| Communication            | Wireless  |
| Working Temperature      | -30~80 °C   |
| Working Frequency Band   | 868MHz  |
| Wireless Firmware Update | Yes   |
| Installation Method      | Bracket wire clamping/track installation                        |
| Communication Equipment  | Gateway:<br>SETP_Router_V1.5 / SETP_Router_V1.3                 |

## Appearance Specifications

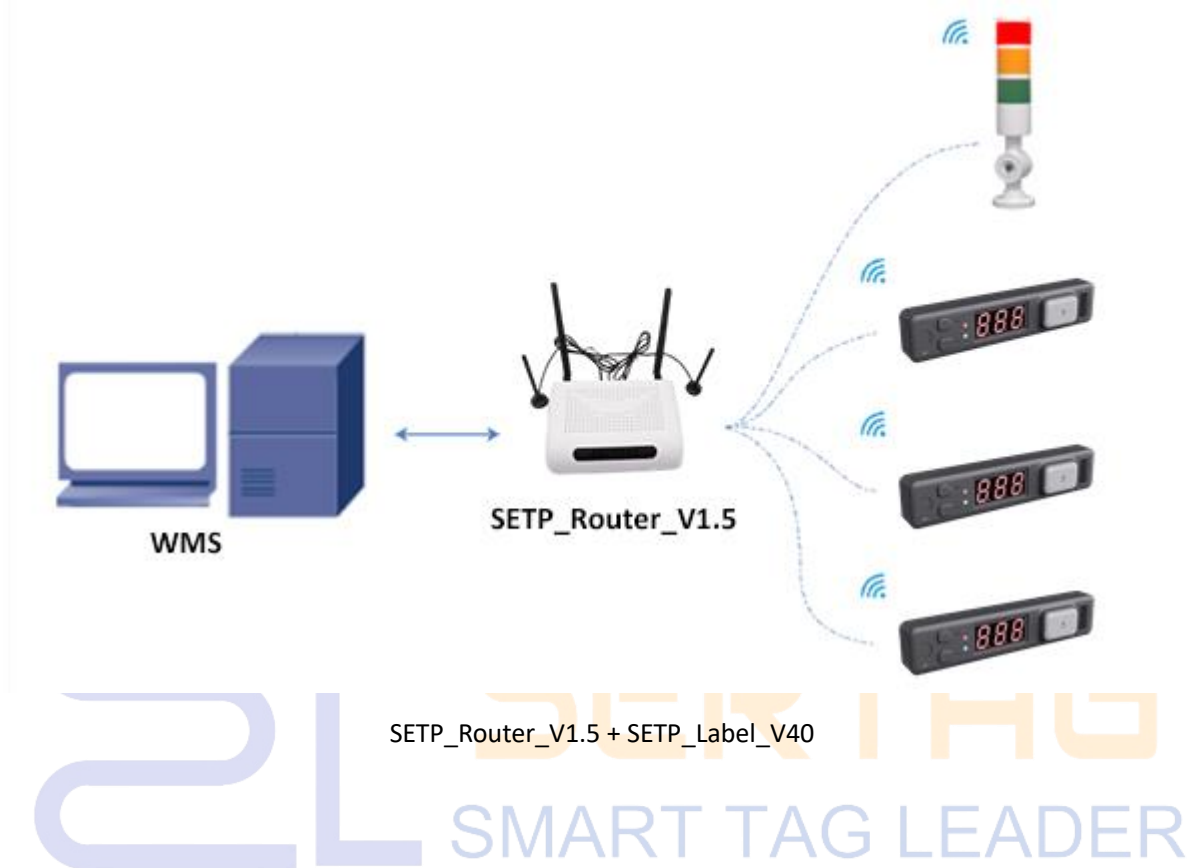


## System Structure



SETP\_Router\_V1.3 + Server + SETP\_Label\_V40

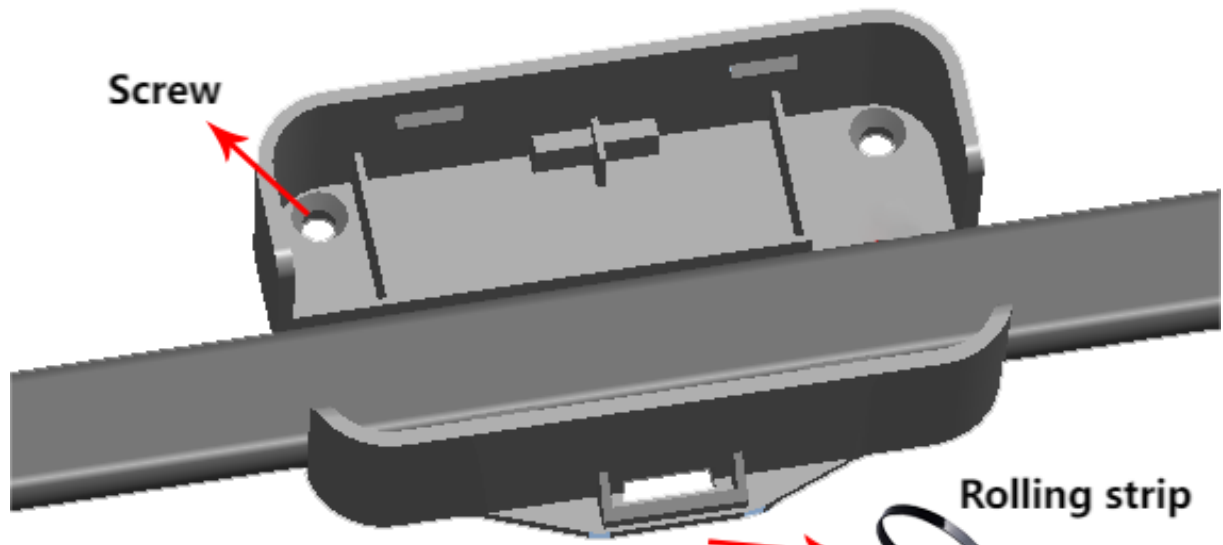
The electronic tag picking system sends instructions through a PC or scanner, which are then forwarded by a router to control the LED lights or screens on the electronic tags to guide pickers accurately and quickly to the designated locations to pick up the corresponding goods.



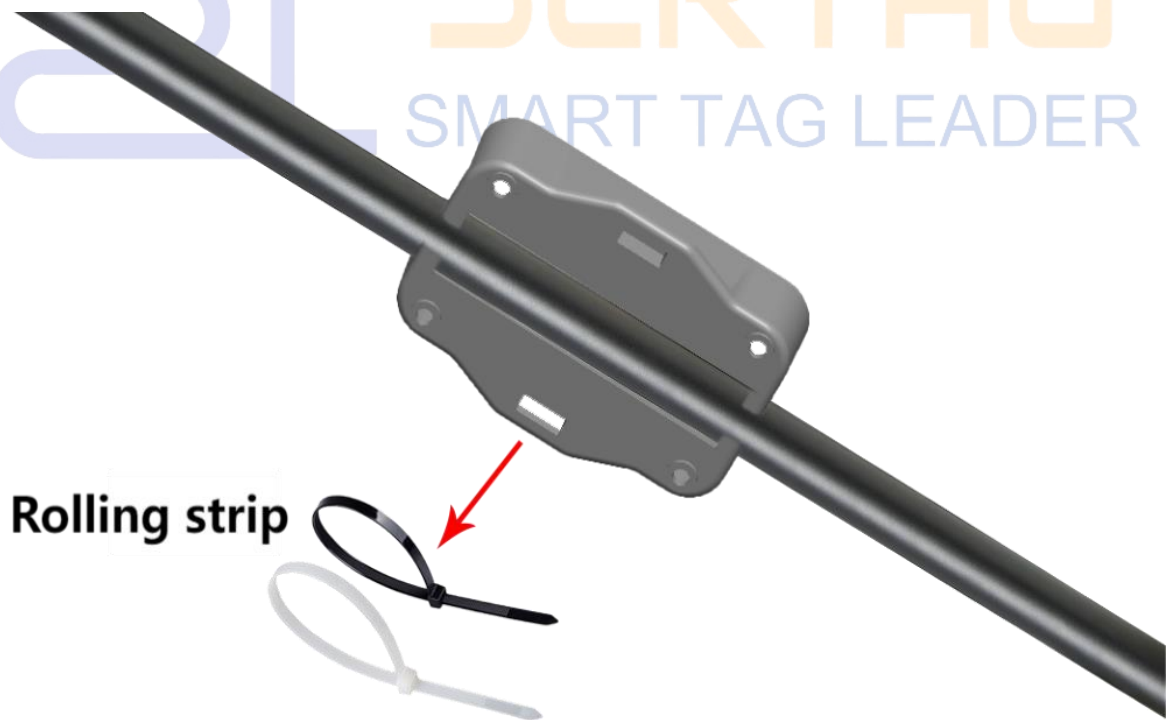
## Installation Method

1. Bracket wire clamping + cable tie fixation (screws or rolled tape fixed to the shelf, rolled tape fixed to the steel pipe)





**S**ERTAG  
SMART TAG LEADER



## 2. Track installation

