

Pick To Light System

---SETP_Label_V15

Pick to Light

E-commerce
Warehouse



Intelligent
Manufacturing



Intelligent
Warehousing



Innovation Point

- 63*14.6*7.9mm
- Wireless
- Easy to install and move
- Colorful, uniform and obvious indicator light
- Supports 24V external power supply/
battery power supply

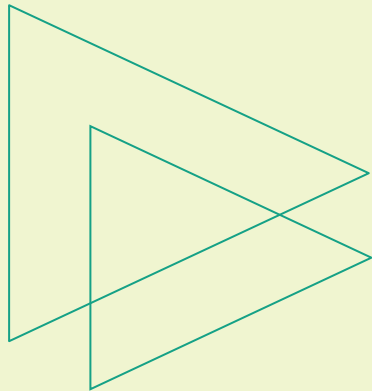


Summary of picking system

The electronic label picking system is a logistics auxiliary operation system developed using advanced electronic technology and communication technology. It is usually used in the sorting process of warehousing or modern logistics centers. It has the characteristics of fast picking speed, high efficiency, low error rate and paperless , standardized operating characteristics. As an advanced operating method, the electronic label-assisted picking system is more efficient when used in conjunction with a warehouse management system (WMS) or other logistics management systems.

The electronic label picking system is a set of electronic equipment installed on the shelf storage space. It is controlled by computers and software, and uses indicator lights or digital displays as auxiliary tools to guide pickers to complete their work correctly, quickly and easily.

Characteristics and benefits



Improve operation speed and quality



Easy and fast deployment



Achieve paperless standardized operations



Reduce operator training time



Reduce labor costs, management costs, etc.

Electronic Pick Tag

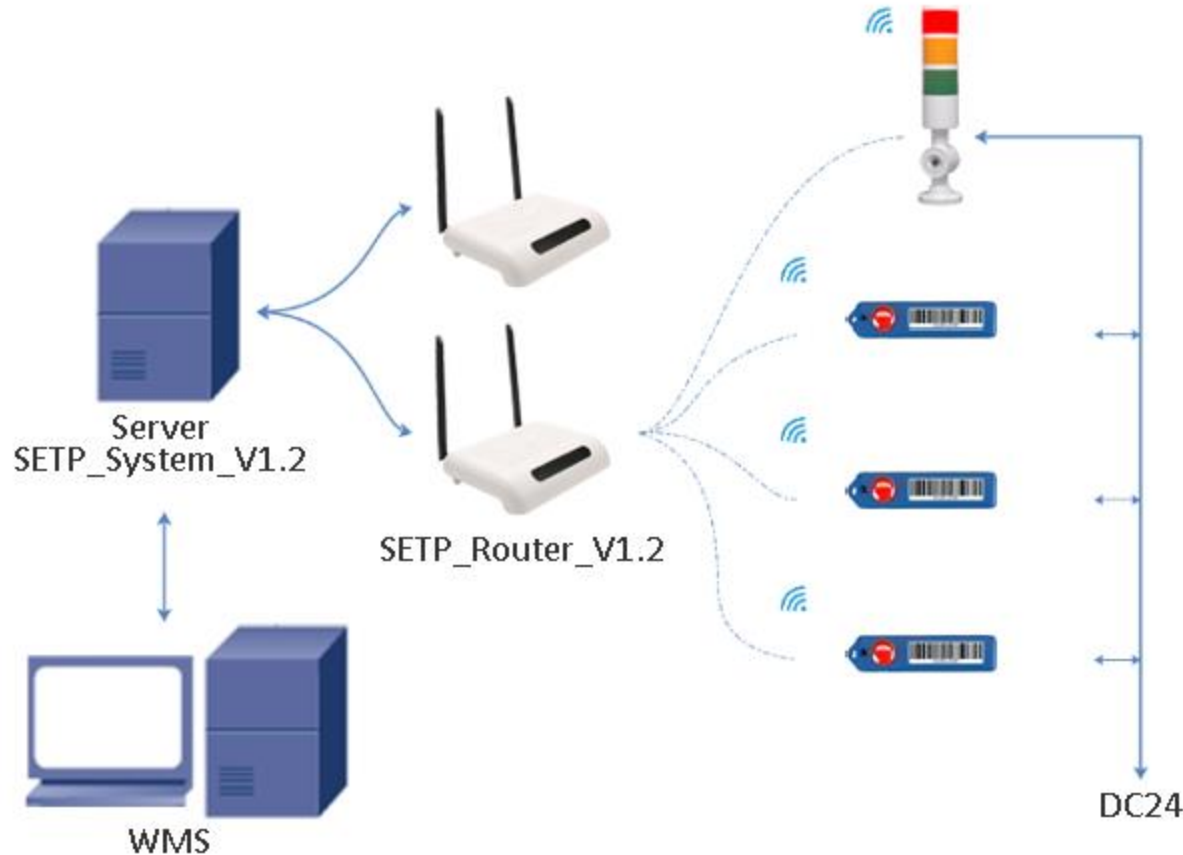
Receive and analyze the data information sent by the router, make corresponding instructions, and click the button to complete the picking.

- Wireless communication distance 30m
- Wireless communication rate 200kbps
- Customized two-way communication protocol, safe and reliable
- Data software and hardware verification
- Low power consumption, regular continuous use for 1 year
- Power supply mode: battery powered or 24V external power supply
- RGB multi-color lighting, good visibility
- Intelligent scanning code pairing and binding
- Battery capacity 300mAh
- Dimensions: 63*14.6*7.9mm



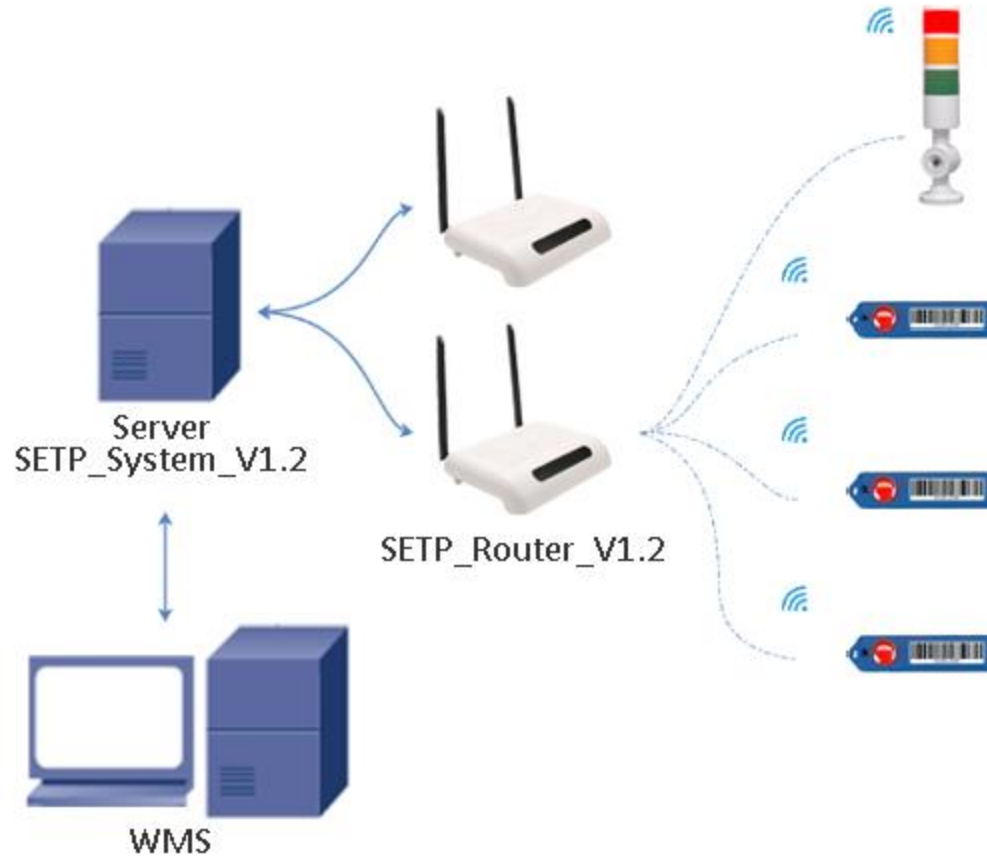
Model: SETP_Label_V15

System Structure V1.2(External Power Supply)

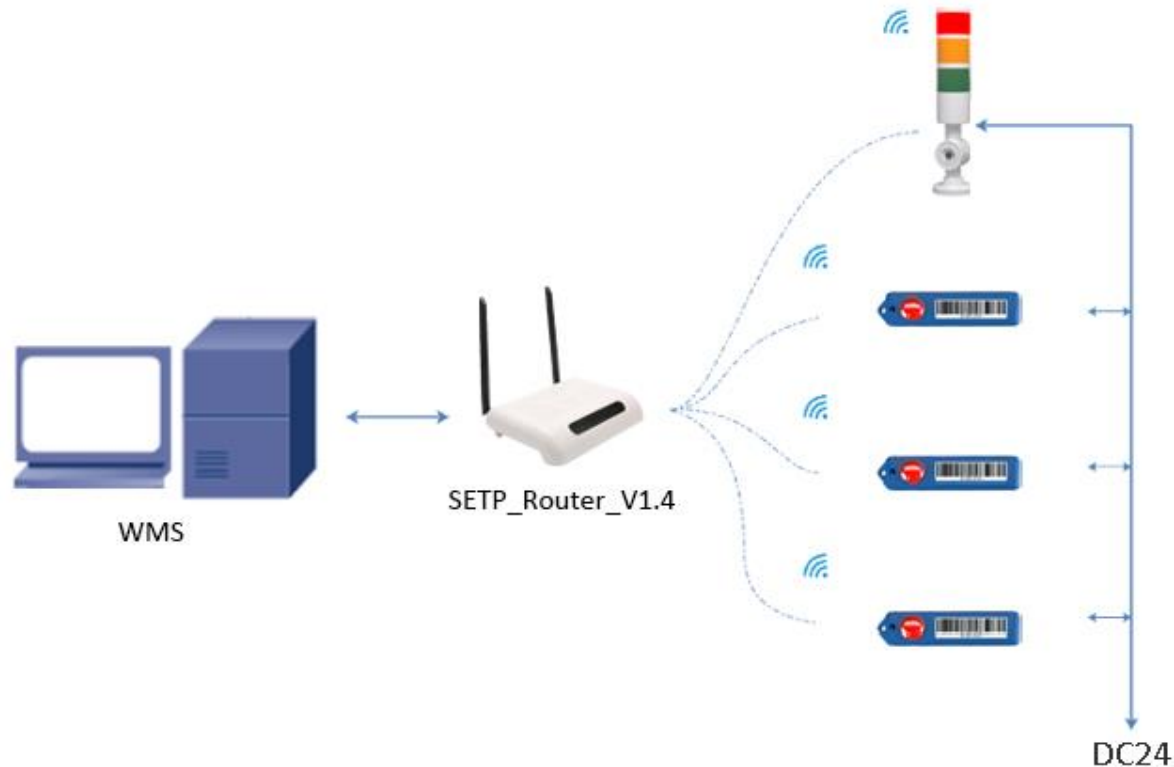


The electronic label picking system sends instructions through a PC or scanner, forwards them through a router, and controls the LED lights or screens on the electronic labels to guide the pickers to accurately and quickly pick the corresponding goods at the designated location.

System Structure V1.2(Batteries Supply)

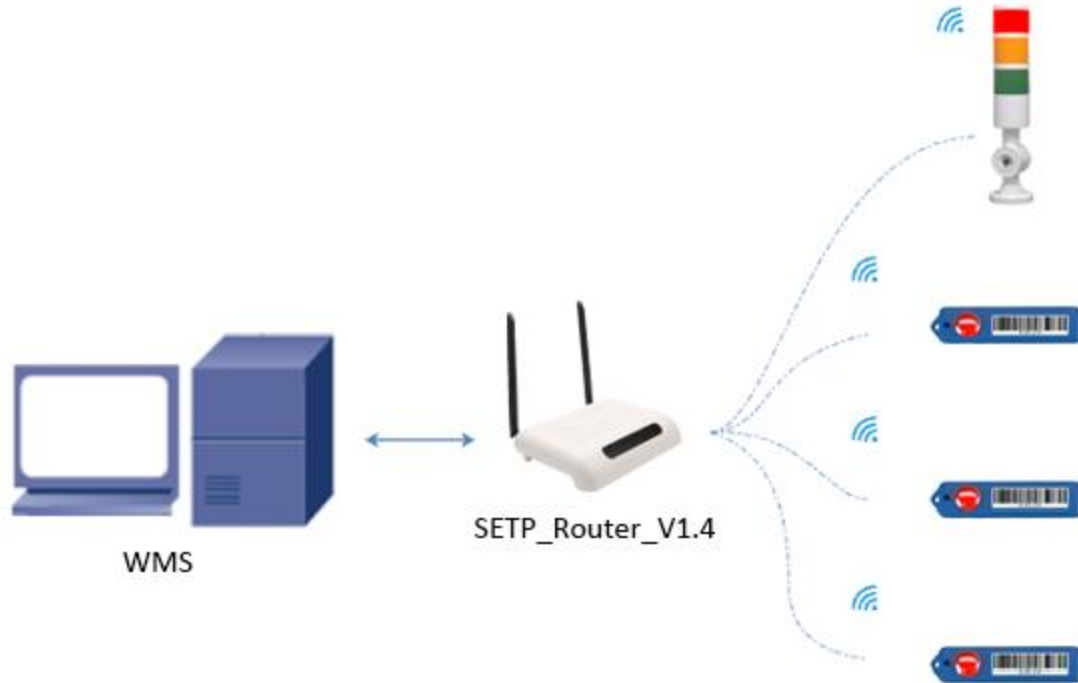


System Structure V1.4 (External Power Supply)



Note: The V1.4 version of the base station has a built-in server program. Users only need to send operating instructions to the base station to realize data transfer, making it easier to use.

System Structure V1.4 (Batteries Supply)

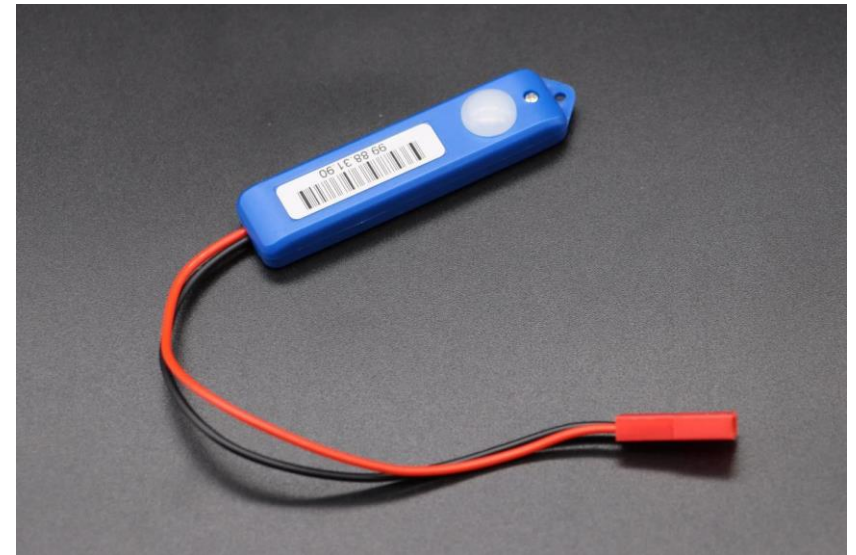


Power Supply Type

Two power supply modes:

1. Powered by battery pack
(battery version)

2. DC24V external power supply
(external power supply version)



Plug-in battery pack, easy to replace and more secure connection

Original front battery compartment cover makes battery replacement easier and easier to maintain

Installation Method

1. Bind and secure with sling rope



2. Strong double-sided adhesive fixation



Physical Display



Front



Reverse side

Router

Receive the operation instructions issued by the PC, analyze them and then send them to the electronic tag through RF.

- Wireless communication distance 30m
- Wireless communication rate 200kbps
- Network communication rate 10/100 Mbps
- Custom two-way data communication protocol to ensure data transmission speed and accuracy
- There is no upper limit for covering electronic labels
- Supports synchronization of multiple routers
- Parallel communication, safe and fast
- Omnidirectional transmission, no dead ends
- Support online software upgrade
- Operating system: linux
- Supports POE power supply or external DC12V power supply



Tag controller

Model: SETP_Router_V1.2

The V1.2 base station has an independent routing function and needs to cooperate with the label server.

Model: SETP_Router_V1.4

The V1.4 version base station comes with its own server program and can directly accept instructions.

Tower Light with Buzzer

Wirelessly receive the data information sent by the router and analyze it, make corresponding instructions and cooperate with the picking lane prompts.

- Used with label picking
- All three lights (red, yellow and green) can be controlled independently
- Wireless communication 868M, frequency hopping communication
- Communication rate 50K
- Covering a communication radius of more than 30 meters
- Multi-color LED highlight indicator light
- 24V external DC power supply, maximum current <math><0.2A</math>
- Built-in buzzer, controllable by command

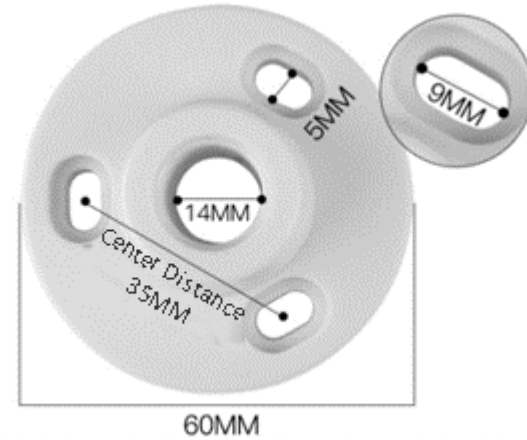
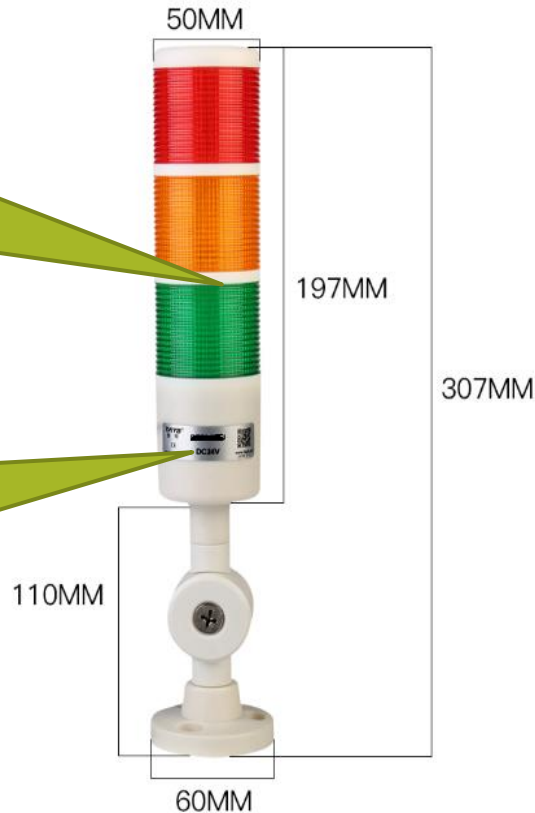


Tower Light with Buzzer
Model: SETP_Label_V9

Tower Light with Buzzer

All three lights can be controlled independently

Magnetic proximity triggers registration



DC5.5 * 2.1
Power supply DC24V, <0.2A

Use the flow path

Initial: Set the server and label parameters

Step 1: The customer sends the pick information to the label server

Step 2: The server parses the instruction requirements and wirelessly lights up the laneway lights and labels

Step 3: Select goods according to the lighted label and press the confirm button to turn off the light. The screen content is updated to the result of the operation

Manual

Initial: Set the server and label parameters

Step 1: The customer sends the picking information to the label server

Step 2: The server parses the command requirements and wirelessly lights up the tunnel lights and tags

Step 3: Pick items according to the illuminated label and press the confirmation button to turn off the light, and the screen content is updated with the result after the operation.

System Functions

- Supports tag registration usage
- Single light lighting interface
- Light up in batches
- Light up result query
- Button feedback
- Tag inspection
- Tag inspection result query
- Support online software upgrade
- Large coverage radius, unlimited number of nodes
- Intelligent routing and transmission, sufficient communication tolerance
- Rich and complete management background, the status of each device is under control

Multifunctional Operation Interface

Through the background management interface, comprehensive management, control and operation of information are achieved.

- Multi-account management background
- Web-based software, you can remotely control tags by entering the URL
- Real-time viewing of base station and tag status
- Label display style template customization
- Import user product data table
- Quick screen refresh and lighting operations
- Simple docking interface (HTTP & Json)
- System software supports cloud and local private server deployment

Contact information

Dalian Sertag Technology Co., Ltd

Experience the power of a solution that's uniquely yours. Let's collaborate and create a tailor-made pick to light system that transforms the way you work.

- Email: sales@sertag.com
- Tel: 86-13664268735 / 86-411-84641910
- WhatsApp: +86 13664268735
- Skype: epaperlabel@hotmail.com

