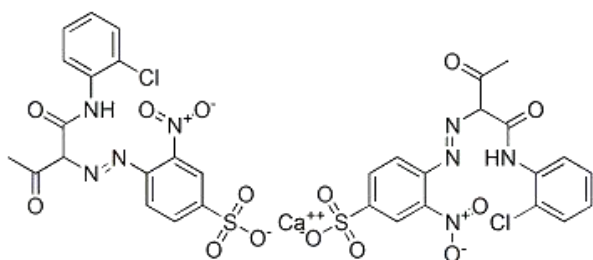


Pigment Yellow 168

Color Type Mono Azo
Color Index No. P.Y. 168
CAS NO. 71832-85-4
Structure:



Description :

- Similar as PY61 PY62, calcium lake pigment. Its greenish yellow shade is between PY1 and PY3. Good light fastness.
- Mainly recommend for plastic and coating. Good bleed fastness in PVC, LDPE. Not recommend for HDPE due to dimensional deformation.

Physical Properties :

Items	Data
Density (g/cm ³)	
Specific Surface Area (m ² /g)	
Oil Absorption (g/100g)	40-80
PH Value	5-8
Bulk Density (lb/gal)	

Fastness Properties	Data
Heat Resistance (°C)	240
Light Resistance (Full Shade, 1~8)	6-7
Weather Resistance (1~5)	4
Acid Resistance (1~5)	4
Alkali Resistance (1~5)	3

Hangzhou Fancheng Chemical Co.,Ltd
 Add: No. 37 Jinyi Road, Xiaoshan, Hangzhou, China
 Tel: +86-571-83531793
<http://www.finelandpigment.com/>

Applications :

Plastic	PVC	●
	PE	●
	PP	◎
	ABS	-
Inks	Offset Ink	-
	Gravure Ink	-
	UV Ink	-
	Solvent borne	-
	Water borne	◎
Paints	Automotive OEM	-
	Car Refinish	-
	Industrial	◎
	Decorative	◎
	Powder Coating	◎

*Remark: ●High Recommendation;
 ◎Recommendation
 - Limit Suitability*

Storage conditions :

Should be sealed for avoiding light and moisture.

Package :

25KG/ Kraft Bag

*Product specific and application information are based upon our current knowledge. They are non-binding and cannot be taken as guarantee. Users must establish the suitability of individual products. We do not accept any liability relating to the use of our products in particular applications.