

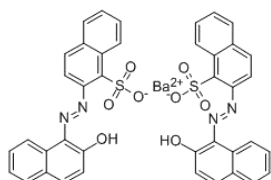
Lithol Red (Barium)

Color Type: Mono Azo Lake

Color Index No.: P.R.49:1

CAS NO.: 1103-38-4

Structure:



Applications:

Flexo/ Gravure inks	Water based	●
	Others	-

Remark: ●High Recommendation;

◎Recommendation;

- Limit Suitability

Description:

- Neutral shade with unstable heat resistance.
- Mainly recommend for printing inks, especially for water based inks.

Physical Properties:

Items	Data
Density (g/cm ³)	1.48-1.90
Specific Surface Area (m ² /g)	32-67
Oil Absorption (g/100g)	40-65
PH Value	7.0-9.0
Bulk Density (lb/gal)	12.3-15.8

Fastness Properties	Data
Storage stability	good
Value of Viscosity	low
Alcohol Resistance (1~5)	3
Acid Resistance (1~5)	3
Alkali Resistance (1~5)	3

Storage conditions:

Should be sealed for avoiding light and moisture.

Package:

25KG/ Kraft Bag

*Product specific and application information are based upon our current knowledge. They are non-binding and cannot be taken as guarantee. Users must establish the suitability of individual products. We do not accept any liability relating to the use of our products in particular applications.

Hangzhou Fancheng Chemical Co.,Ltd

Add: No. 37 Jinyi Road, Xiaoshan, Hangzhou, China

Tel: +86-571-83531793

<http://www.finelandpigment.com/>