

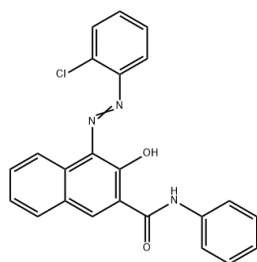
Permanent Red FR

Color Type: Mono Azo

Color Index No.: P.R.21

CAS NO.: 6410-26-0

Structure:



Description:

- Yellowish red and stable heat resistance to 150 °C, but with poor solvent resistance.
- Mainly recommend for coatings and textile printing.

Physical Properties:

Items	Data
Density (g/cm ³)	1.31
Specific Surface Area (m ² /g)	50-60
Oil Absorption (g/100g)	39-98
PH Value	5-8
Bulk Density (lb/gal)	10.1-12.5

Fastness Properties	Data
Ester Resistance (1~5)	2
Light Fastness (1~8)	4
Alcohol Resistance (1~5)	3
Acid Resistance (1~5)	3
Alkali Resistance (1~5)	2

Applications:

Paints/ Textile printing	Enamel paint	-
	Decorative(Indoor)	◎
	Latex products	●
	Leather dyeing	●
	Dermateen	●
	Oil Painting	●
Stationery	●	

Remark: ●High Recommendation;

◎Recommendation;

- Limit Suitability

Storage conditions:

Should be sealed for avoiding light and moisture.

Package:

25KG/ Kraft Bag

*Product specific and application information are based upon our current knowledge. They are non-binding and cannot be taken as guarantee. Users must establish the suitability of individual products. We do not accept any liability relating to the use of our products in particular applications.

Hangzhou Fancheng Chemical Co.,Ltd

Add: No. 37 Jinyi Road, Xiaoshan, Hangzhou, China

Tel: +86-571-83531793

<http://www.finelandpigment.com/>