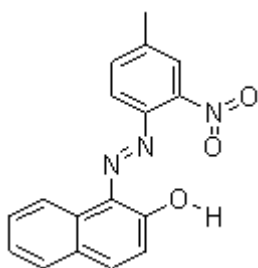


Toluidine Red

Color Type: Mono Azo
Color Index No.: P.R.3
CAS NO.: 2425-85-6
Structure:



Description:

- With bluish and yellowish grades.
- Mainly recommend for air drying paints, rigid PVC.

Physical Properties:

Items	Data
Density (g/cm ³)	1.34-1.52
Specific Surface Area (m ² /g)	8-25
Oil Absorption (g/100g)	33-80
PH Value	6-8
Bulk Density (lb/gal)	11.1-12.6

Fastness Properties	Data
Ester Resistance (1~5)	4
Light Fastness (1~8)	7
Alcohol Resistance (1~5)	3
Acid Resistance (1~5)	4
Alkali Resistance (1~5)	3

Applications:

Paints/plastic	Automotive/Refinish	●
	Air drying paints	●
	Industrial(Outdoor)	●
	Powder Coating	◎
	Rigid PVC	●

Remark: ●High Recommendation;
◎Recommendation;
- Limit Suitability

Storage conditions:

Should be sealed for avoiding light and moisture.

Package:

25KG/ Kraft Bag

*Product specific and application information are based upon our current knowledge. They are non-binding and cannot be taken as guarantee. Users must establish the suitability of individual products. We do not accept any liability relating to the use of our products in particular applications.