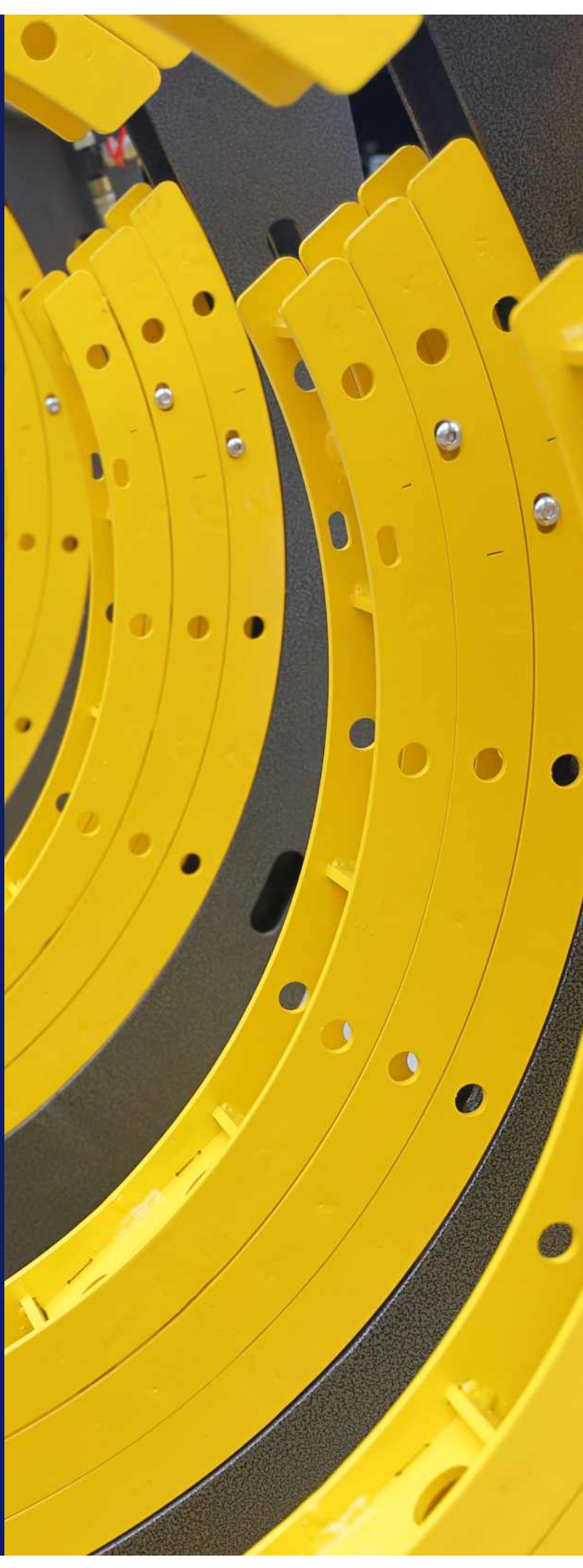




# General Catalog Pipe Tools

2022

Dedicated to pipe tools



# Pipe Bender

## Manual pipe bender

For accurate one handed bending up to 90°  
 Ø6-22mm(1/4" - 7/8").

Suitable for bending soft copper tubes, coated copper tubes and multi-layer composite tubes.

Universal use in sanitary, heating, air conditioning, refrigerating and hydraulic applications.

Saving on fittings, storage, procurement, soldering joints, pressing joints and working hours.

- Accurate bending even in restricted spaces.
- Production of U-bends, counter bends, swan-neck bends and connecting bends possible at all levels.
- Easy and rapid changing of the bending shoes.
- Fast release and removal of the bending shoes.
- Handy and lightweight, easy move to job site.



Compact design

Quick interchangeable bending shoes

Proven, reliable ratchet fee

Pull down for fast release and reset

Nylon made bending shoes and pivot shoes minimize friction and ensure optimum bending



WP-22



WP-22A

Capable of making U-bends, counter bends, swan-neck bends and connecting bends possible at all levels.

Setup with reverse-bend device

Catalog No.	Model No.	Bending range (mm)	Bending shoes (inch)	Wall thickness of tube (mm)	G.W. (Kg)	Packing size (cm)
612010	WP-22	Ø6-22	1/4"(6mm), 5/16"(8mm), 3/8"(10mm), 1/2"(12mm),	1.0	4.5	55*32*9
612020	WP-22A	Ø6-22	5/8"(16mm), 3/4"(18mm), 7/8"(22mm)	1.0	5.1	55*32*9

# Pipe Bender

## Manual pipe bender



WP-1A



WP-1



### Product features

- Capable of bending angles from 0° to 90° on pipes ranging from 3/8" to 1".
- Cold bending, no pre-warming of pipe is required.
- Fast and easy setup on the job site.
- Simple to use.
- Steel storage box for easy carry from site to site.



Bending shoes

Catalog No.	Model No.	Hydraulic Ram Output (Ton)	Ram stroke (mm)	Bending range(O.D.) (mm)	Bending shoes (inch)	G.W. (Kg)	Packing size (cm)
612000	WP-1A	6	150	Ø16-33	3/8" 1/2" 3/4" 1"	17	43*38*13
612001	WP-1	6	150	Ø13-33	1/4" 5/16" 3/8" 1/2" 3/4" 1"	19	50*25*15



WP-25S



### Product features

It is mounted solidly onto the bench and comes with extension handle and 7 x 180° bending shoes included. The bending shoes can be changed in seconds and the small roller is adjustable for pressure by moving the thumb screw inside the main arm.

- All dies are made of steel and nearly unbreakable.
- Comes delivered in a heavy duty moulded plastic carry case with handle.
- Optimum bending results without deformation or ripples.
- Universal applications: U-bends, counter-bends, swan-neck bends and connecting bends possible at all levels.
- Top quality, precise and simple to use



Bending shoes

Catalog No.	Model No.	Bending range(O.D.) (mm)	Bending shoes (inch)	G.W. (Kg)	Packing size (cm)
612030	WP-25S	Ø16-33	3/8"(10mm),1/2"(12mm),9/16"(14mm),5/8"(16mm),3/4"(19mm),7/8"(22mm),1"(25mm)	27.6	67*19*42

# Pipe Bender

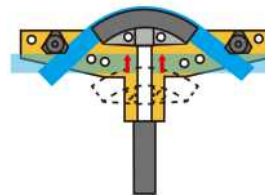
## Manual pipe bender

The manual hydraulic pipe benders are designed for precision cold bending of thick-wall pipes (gas, water and steam pipes, non-heated black iron pipes, galvanized pipes, schedule 40 & 80) up to 90°.

Following GB/T 3091, DIN 2440, EN 10255, BS1387 standards. These benders are ideal for plumbing, sanitary and heating installation at construction sites, for apparatus and boiler making and for industrial applications.

- Easy and simple operation.
- Comfortable working position with the tripod stand.
- With foldable and adjustable bending frame.

Bending operation



Catalog No.	Model No.	Hydraulic Ram Output (Ton)	Ram stroke (mm)	Bending range(O.D.) (mm)	Bending shoes (inch)	G.W. (Kg)	Packing size (cm)
611010	WP-2	13	250	Ø21.3-60	1/2", 3/4", 1", 1¼", 1½", 2"	49	73*32*20
611020	WP-3	20	290	Ø21.3-88.5	1/2", 3/4", 1", 1¼", 1½", 2", 2½", 3"	98	93*40*21
611030	WP-4	20	370	Ø21.3-108	1/2", 3/4", 1", 1¼", 1½", 2", 2½", 3", 4"	155	118*46*25
611040	WP-2J	13	250	Ø21.3-60	1/2", 3/4", 1", 1¼", 1½", 2"	53	73*32*20
611050	WP-3J	20	290	Ø21.3-88.5	1/2", 3/4", 1", 1¼", 1½", 2", 2½", 3"	105	93*40*21
611060	WP-4J	20	370	Ø21.3-108	1/2", 3/4", 1", 1¼", 1½", 2", 2½", 3", 4"	156.8	118*46*25

# Pipe Bender

## Electric pipe bender

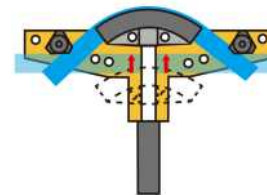
The electric hydraulic pipe benders are designed for precision cold bending of thick-wall pipes (gas, water and steam pipes, non-heated black iron pipes, galvanized pipes, schedule 40 & 80) up to 90°.

Following GB/T 3091, DIN 2440, EN 10255, BS1387 standards.

These benders are ideal for plumbing, sanitary and heating installation at construction sites, for apparatus and boiler making and for industrial applications.

- Cold bending, no pre-warming of pipe is required.
- Effective work with the electric pump.
- Carry handle and casters ensure quick and easy move from site to site.
- All components supplied in a wooden case, including electric pump, the bender, bending shoes and service pack.

Bending operation



Catalog No.	Model No.	Power	Hydraulic Ram Output (Ton)	Ram stroke (mm)	Bending range(O.D.) (mm)	Bending shoes (inch)	G.W. (Kg)	Packing size (cm)
613010	WP-2D	750W,220V	13	250	Ø21.3-60	1/2", 3/4", 1", 1¼", 1½", 2"	66.9	96*35*28
613011	WP-2D	750W,110V	13	250	Ø21.3-60	1/2", 3/4", 1", 1¼", 1½", 2"	66.9	96*35*28
613020	WP-3D	750W,220V	20	290	Ø21.3-88.5	1/2", 3/4", 1", 1¼", 1½", 2", 2½", 3"	120.8	118*46*29
613021	WP-3D	750W,110V	20	290	Ø21.3-88.5	1/2", 3/4", 1", 1¼", 1½", 2", 2½", 3"	120.8	118*46*29
613030	WP-4D	750W,220V	20	370	Ø21.3-108	1/2", 3/4", 1", 1¼", 1½", 2", 2½", 3", 4"	163.8	118*46*33
613031	WP-4D	750W,110V	20	370	Ø21.3-108	1/2", 3/4", 1", 1¼", 1½", 2", 2½", 3", 4"	163.8	118*46*33

# Pipe Bender

## Air hydraulic pipe bender

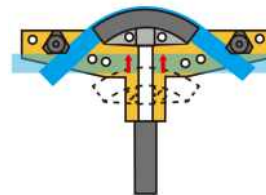
The Air Hydraulic Pipe Benders can be operated by air compressor or by hand. These benders are for precision cold bending of thick-walled pipes (gas, water and steam pipes, non-heated black iron pipes, galvanized pipes, schedule 40 & 80) up to 90°.

Following GB/T 3091, DIN 2440, EN 10255, BS1387 standards.

These benders are ideal for plumbing, sanitary and heating installation at construction sites, for apparatus and boiler making and for industrial applications.

- Cold bending, no pre-warming of pipe is required.
- Works quicker with air compressor.
- Can be operated by hand when air compressor is not available.
- Rugged construction for use in tough work sites.
- Fast and easy setup, simple to use.
- Supplied in a wooden case with a set of bending shoes and service pack.

Bending operation



Bending shoes

Catalog No.	Model No.	Hydraulic Ram Output (Ton)	Ram stroke (mm)	Air pressure (kg/psi)	Bending range (O.D.) (mm)	Bending shoes (inch)	G.W. (Kg)	Packing size (cm)
614010	WP-2Q	13	250	8/116	Ø21.3-60	1/2", 3/4", 1", 1¼", 1½", 2"	53	96*35*28
614020	WP-3Q	20	290	8/116	Ø21.3-88.5	1/2", 3/4", 1", 1¼", 1½", 2", 2½", 3"	109	94*40*23
614030	WP-4Q	20	370	8/116	Ø21.3-108	1/2", 3/4", 1", 1¼", 1½", 2", 2½", 3", 4"	158	118*46*33

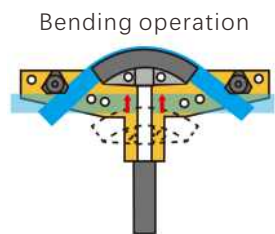
# Pipe Bender

## Hydraulic pipe bender with hand pump

Hydraulic pipe bender and hand pump set are for precision cold bending of thick-walled pipes (gas, water and steam pipes, non-heated black iron pipes, galvanized pipes, schedule 40 & 80) up to 90°.

Following GB/T 3091, DIN 2440, EN 10255, BS1387 standards. These benders are ideal for plumbing, sanitary and heating installation at construction sites, for apparatus and boiler making and for industrial applications.

- Cold bending, no pre-warming of pipe is required.
- Fast and easy setup on the job site.
- Hand pump with 1.8 meter hose allows operation from a distance, increasing flexibility and safety.
- Supplied in a wooden case with a set of bending shoes and service pack.



Catalog No.	Model No.	Hydraulic Ram Output (Ton)	Ram stroke (mm)	Pump model No.	Bending range(O.D.) (mm)	Bending shoes (inch)	G.W. (Kg)	Packing size (cm)
615010	WP-2F	13	250	HHB-700	Ø21.3-60	½" ¾" 1" 1¼" 1½" 2"	50.6	96*35*28
615020	WP-3F	20	290	HHB-700	Ø21.3-88.5	½" ¾" 1" 1¼" 1½" 2" 2½" 3"	104.9	94*40*21
615030	WP-4F	20	370	HHB-700A	Ø21.3-108	½" ¾" 1" 1¼" 1½" 2" 2½" 3" 4"	156.4	118*46*33

Catalog No.	Model No.	Working pressure (bar)		Oil displacement per stroke (cm³)		Reservoir (cm³)		Dimensions (cm)			G.W. (Kg)	Packing size (cm)
		Low pressure stage	High pressure stage	Low pressure stage	High pressure stage	Oil capacity	Usable oil capacity	L	B	H		
616010	HHB-700	20	700	13	1.6	1000	700	60	12	20	10	73*19*19
616020	HHB-700A	20	700	13	2.3	3200	2700	71.5	12	20	16.8	73*19*19

# Pipe Bender

## Bending shoes

For bending pipes to 90° following GB/T 3091,DIN 2440,EN 10255,BS1387 standards.

Made of nodular cast iron, the bending shoes are strong and durable.



WP-2,2J,2D,2Q series bending shoes

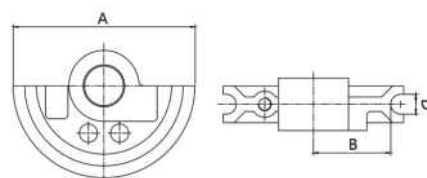
Bending shoe size (inch)	A (mm)	B (mm)	Minimum bend radius (mm)	D (mm)	Pipe Schedule	Wall thickness (mm)
1/4"	61	44	38	13.5	40	2
5/16"	76	56	48	16.5	40	2
3/8"	106	63	50	18	40	2.3
1/2"	115	67.5	50.2	22	40 80	2.8 3.7
3/4"	131	84.5	66	28	40 80	2.9 3.9
1"	147	96.5	75.4	34	40 80	3.4 4.5
1 1/4"	195	134	108.7	43	40	3.6
1 1/2"	242	162	133.5	50	40	3.7
2"	297	238	199.2	62	40	3.9
2 1/2"	380	257	209	79	40	5.2
3"	436	390	335	90	40	5.5
4"	555	450	400	110	40	6

● Pipe schedule : 40 = Standard, 80= Extra Heavy

WP-1A series bending shoes

Bending shoe size (inch)	A (mm)	B (mm)	Minimum bend radius (mm)	D (mm)	Pipe Schedule	Wall thickness (mm)
1/2"	104	63.5	50	18	40	2.3
1/2"	112	68.5	54.8	21.5	40	2.8
3/4"	131	87.5	68.5	28	40	2.9
1"	147	107	86	34	40	3.4

● Pipe schedule : 40 = Standard



WP-25S bending shoes

Bending shoe size (inch)	A (mm)	Minimum bend radius (B)(mm)	D (mm)	Wall thickness of steel pipe stainless steel pipe (mm)	Wall thickness of copper tubes (mm)
3/8"	100	42	11	0.8	1.0
1/2"	119	50.5	13	1.0	1.2
9/16"	139	55.5	15	1.0	1.2
5/8"	159	68.5	17	1.0	1.2
3/4"	179	77	20	1.0	1.2
7/8"	225	98.5	23	1.2	1.5
1"	225	97	26	2.0	1.6



# Pipe Bender

## Section & tube rolling machine

This specially designed section and tube rolling machine can be used on either side front or rear of machine, the front is designed to handle the larger tube as the rear is capable of rolling smaller tubes.

Toolings made of grey cast iron allows long service life.

- Cold bending, no pre-warming of pipe is required.
- For making quick work of large radius bends and doing complete circles.
- Especially applicable to the production of steel greenhouse frame.
- Capable of rolling bending thin-walled mild steel, stainless steel round & square tubes.
- Foot pedal with emergency stop available on request.
- Two driving rollers and one driven roller.
- Manual adjustment of top roll.



WP-76B



WP-G76



Catalog No.	913040	931350
Model No.	WP-76B	WP-G76
Tooling for round tubes (mm)	16	
	19	
	22 & 63 (2-IN-1)	
	25 & 51 (2-IN-1)	
	32 & 38 (2-IN-1)	
Tooling for square tubes (mm)	76	
	30 & 50 (2-IN-1)	
	16 & 25 & 40 (3-IN-1)	
	19 & 22 & 38 (3-IN-1)	
Motor	220V or 380V, 1.5KW	
G.W(Kgs)	260	250
Packing (cm)	73*63*103	

Wall thickness	Tooling for round tubes (mm)									Tooling for square tubes (mm)							
	16	19	22	25	32	38	51	63	76	16	19	22	25	30	38	40	50
Wall thickness of stainless steel tube	0.5	0.8	1.0	1.0	1.2	1.2	1.5	1.6	2.0	0.5	0.8	1.0	1.0	1.2	1.2	1.5	1.5
Wall thickness of mild steel tube	0.8	1.0	1.2	1.2	1.5	1.5	1.8	1.8	2.3	0.8	1.0	1.2	1.2	1.5	1.5	1.8	1.8



**Hangzhou Welping Machinery Equipment Co., Ltd**

Phone: 00 86 571 89332538

E-mail: [top@welping.cn](mailto:top@welping.cn) Web: [www.welpingtool.com](http://www.welpingtool.com)

Office address: Room 1904 Building 1, Taifu Plaza, No. 1 Tonghui Middle Road,  
Xiaoshan District, Hangzhou

Factory address: No. 2 Jinyuan Road, Puyang Town, Xiaoshan District, Hangzhou, China