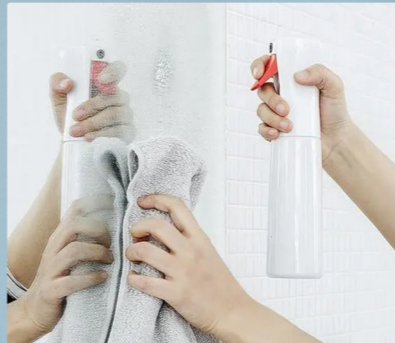


UnionSprayer
EVERY PIECE QUALITY MADE & CHEAP

SPRAYER & PUMP

Custom Contract Manufacturing



Packaging for Household Cleaning, Personal Care, Beauty

www.unionsprayers.com
Hangzhou Dahuan Technology Co., Ltd
No.99 Wangzhou Road, Hangzhou Zhejiang China
E-mail: bryan@unionsprayer.com

Union Sprayer is a manufacturer consortium of pump sprayers in China, we have united the products by five plants, our main product including Trigger Sprayer, Mist Sprayer, Lotion Pump, Treatment Pump, Cream Pump&Foam Pump, etc. which are wildly used in packaging of Beauty salon,cosmetic,medicine and daily cleaning.

The Union Sprayer is more than a sprayer pump facotry, we have great experience on export business and we have united five manufacturing enterprises working together to provide quality made and fast delivery goods. Thanks to our joint mode, we can highlight our advantages in many aspects, including export capacity, product professionalism and fast delivery ability of each factory, so that the goods ordered by our customers can be delivered faster and more qualified.

Our production base is in Yuyao city, and International business center located in Hangzhou, China.We have more than 75 injection molding machines and more than 30 automatic assembly lines to ensure production capacity and delivery time.

Manufacturing Capacity

12500000pcs

Monthly production capacity

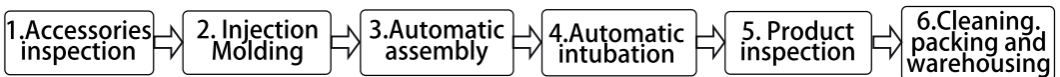
75+

Injection Machines

30+

Automatic assembly lines

Production Process



Product Categories



Spray Bottle
P2



Trigger Sprayer
P3



Mini Trigger Sprayer
P3



Lotion Pump
P4



Cap
P6



Foam Pump
P7



Medical Pump
P7



Treatment Pump
P8



Nail remove Pump
P9



Oil Pump
P9



Fine Mist Sprayer
P9



Continuous Spray Bottles CB200-500

Continuous spray bottles are plastic spray bottles made of PP and PET plastics. They are widely used in barber shops, hotels, hospitals and homes.

Applications:
 Skin Care
 Hair care
 House cleaning
 Pet care
 Air refresh
 Plants watering

The spray volume of this product is uniform and dense. Our products support transparent color white and black customization. There are three choices of capacity, namely 200ml, 300ml and 500ml;

Our production speed is fast, the processing technology is meticulous, and the edges and corners are free of burrs. We support customized services of different colors, capacities and printing.

Welcome to consult our sales experts for an accurate and reasonable quotation.

capacity:200ml/300ml/500ml

Regular Color:Transparent/White/Black

MOQ: 5000pcs.

Capacity(ml)	Capacity(oz)	Model No.	Sizes(mm)	Color	Remarks
200ml	6.76oz	CB200	50.2*53.4*202	Regular/custom	
300ml	10.15oz	CB300	50.2*60*230	Regular/custom	Most Popular
500ml	16.90oz	CB500	50.2*67.5*285	Regular/custom	

Mini Perfume Bottle MB02-05

PP made perfume bottle with a sprayer and a cap at the top, using a set of actuating parts including piston pole, stainless steel spring and glass ball.

Most of the time, this product is used as a trial pack for perfume, and it is very popular to the users, because it is very convenient to use, that one can put it in their bags or pockets. People always call it Pen spray bottle, Pocket spray bottle, Plastic perfume vials, Perfume Sampler Vials, ect.

Capacity options:
 2ml/3ml/4ml/5ml

MOQ: 10,000pcs



Capacity(ml)	Model No.	Capacity(oz)	Dimensions(Diameter*height)
2ml	MB02	0.07oz	12mm*56mm
3ml	MB03	0.100z	12mm*66mm
4ml	MB04	0.150z	12mm*76mm
5m	MBO5	0.170z	12mm*99mm

Trigger Sprayer

N001

- Closure: 28/400, 28/410, 28/415
- Output: 0.8cc/+/-
- Packing: 500pcs/ctn
- Carton size: 57*33*39cm



N001A



N001B



N001C



N001D



N001E



N001F



N001G



N001H



N001I



N001J

N002

- Output: 1.0cc/T+/-



N002A

24/410 28/400 28/410



N002B

28/400 28/410



N002C

28/400 28/410

N003

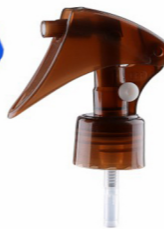
- Output: 0.3cc/T+/-, 0.65cc/T+/-
- Closure: Smooth, Ribbed
- Size: 20/410, 24/410, 24/415, 28/410



N003A



N003B



N003C



N004D



N004E

N004

- Output: 1.2cc/T+/-
- Closure Size: 28/410, 28/400



N004A



N004B

N005

- Output: 1.2cc/T+/-
- Size: 28/400, 28/410, 28/415
- All plastic trigger sprayer, no metal spring in inside



N005A



N005B



N005C



N005D

LOTION PUMP



N006 ■ Two pcs glass balls in pump
 Up down lock.Output: 2cc/T +/-
 Packing:1000-1250pcs/ctn

Actualor Options:

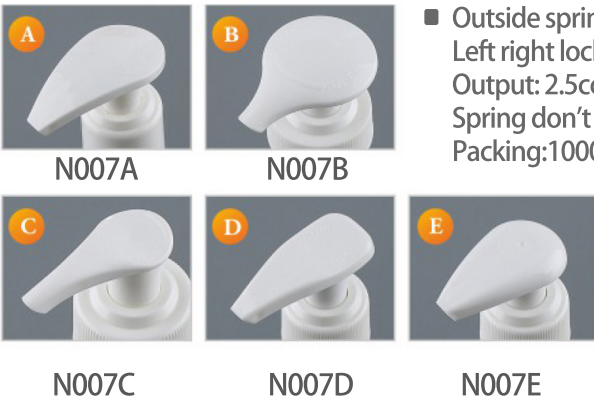


Closure Options:



N007

Actualor Options:



■ Outside spring
 Left right lock
 Output: 2.5cc/T +/-
 Spring don't touch liquid
 Packing:1000-1250pcs/ctn



Closure Options:



LOTION PUMP

N008 ■ Left right lock
 Output: 1.4 cc/T +/-
 Packing: 1000-1250pcs/ctn

Closure Options:



Smooth
 24/410
 28/400
 28/410

Ribbed
 24/415
 28/415

Ribbed
 24/410
 28/410

Ribbed
 28/400



Actuator Options:



N008A

N008B

N008C

N008D

N008E

N008F

N008G

N008H

N009

Closure Options:



Ribbed 28/410 33/410 Smooth 28/410 33/410

■ Up down lock
 Two pcs glass balls in pump
 28/410 Output: 4cc/T +/-
 33/410 Output: 2cc/T +/-, 4cc/T +/-
 Packing: 400-800pcs/ctn



33/410 Double wall closure

Actuator Options:



N009A

N009B

N009C

N009D

N009E

N009F

N009G

N009H

N009I

N009J

N009K

N009L

N009M

N009N

N009O

N009P

N009Q

N009R



LOTION PUMP

N010

- Up down lock
- Two pcs glass balls in pump
- 38/410 Qulput: 4cc/T +/-
- Packing: 500pcs/ctn



N010A

N010B

N010C



N010D

N010E

N010F



N011

- Clip lock
- Output: 1.0cc/T +/-
- Closure size: 20/410, 24/410, 28/410
- Packing: 1500pcs/ctn

CAP

N012



N012A
28/410



N012B
24/410 28/410



N012C
28/410



N012D
18/410 20/410
24/410 28/410



N012E
120/410 24/410
28/410



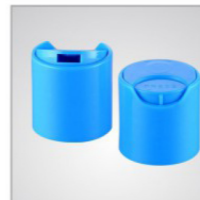
N012F
24/410 28/410
28/400



N012G
224/410 28/410
28/415



N012H
224/410 28/410
28/415



N012I
18/410 20/410
24/410 28/410



N012J
20/410 24/410
28/410

FOAM PUMP

N013 ■ Outside Spring
 40mm, 42mm mold output 0.75cc/T +/-
 28mm, 30mm mold output 0.3cc/T +/-



N013A
28mm



N013B
28mm



N013C
30mm



N0103-G
40mm
Left/right lock



N013D
40mm
Left/right lock



N013E
40mm
clip lock



N013F
42mm

MEDICAL SPRAYER

N014 ■ Output: 0.12cc/T +/-



N014A
18/410
20/410
24/410
28/410



N014B
18/410
20/410
Nozzle size: 35mm, 55mm, 65mm
Cover: PP or PS



N014C
18/410
20/410

TREATMENT PUMP

N015

- Inside spring, outside spring
Output: 0.25cc/T+/-
Output: 0.65cc/T+/-



N015A
20/410



N015B
20/410



N015C
20/410



N015D
20/410



N015E
20/410 24/410



N015F
20/410 24/410



N015G
24/410



N016

- Output: 0.25ml+/-
Closure size: 18/410, 18/415, 20/410, 24/410
Design options: spring outside, spring inside and airless.
Closure options: Ribbed, Smooth, UV, Aluminum and bamboo
Cover options: Half and full
Cover material: PP and AS



N016A



N016B



N016C



N016D

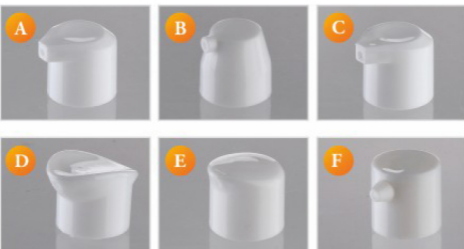


N016E



N016F

Actuator Options:



NAIL REMOVER PUMP



N017A



N017B

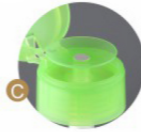
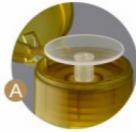


N017C



N017D

N017E
20/410
24/410
28/410



OIL PUMP N017

- Output: 0.5ml+/-
- Closure size: 33/410, 24/410, 28/410.
- Left/Right lock for 24/410 and 28/410



N017F
24/410

FINE MIST SPRAYER

N018

- Output: 0.14ml+/-, 0.25ml+/-
- Design options: spring outside, spring inside and 360 degree
- Closure options: Ribbed, Smooth, UV, Aluminum and bamboo
- Closure size: 18/410, 18/415, 20/410, 20/415, 22/410, 22/415, 24/410, 24/415, 28/410



N018A



N018B



N018C



N018D

PERFUME SPRAYER

N019

- Size: 13mm, 15mm, 18mm, 20mm
- Output: 0.06cc/T +/-



N019A



N019B