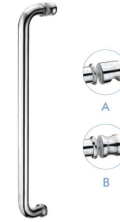


WLS110

Original Code: LS501
Product Name: Handle
Main Material: SS304
Finish: Mirror/Satin
Applicable Glass Thickness: 8-12mm

| Code | Drilling size | Pipe size | B(mm) | D(mm) | F(mm) |
|--------------|---------------|-----------|-------|-------|-------|
| WLS1105A/B/T | Ø14 | Ø25 | 475 | 275 | 70 |
| WLS1104A/B/T | Ø12 | Ø19 | 457 | 152 | 60 |

Please choose style B when the distance between doors and fixed glass less than 10mm.



WLS180

Original Code: LS511
Product Name: Handle
Main Material: SS304
Finish: Mirror/Satin
Applicable Glass Thickness: 8-12mm

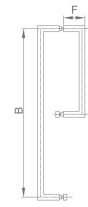
| Code | Drilling size | Pipe size | L(mm) | B(mm) | D(mm) |
|------------|---------------|-----------|-------|-------|-------|
| WLS1805A/B | Ø14 | Ø25 | 500 | 475 | 70 |
| WLS1804A/B | Ø14 | Ø25 | 400 | 375 | 70 |



WLS150

Original Code: LS505
Product Name: Handle
Main Material: SS304
Finish: Mirror/Satin
Applicable Glass Thickness: 8-12mm

| Code | Drilling size | Pipe size | L(mm) | B(mm) | D(mm) |
|----------|---------------|-----------|-------|-------|-------|
| WLS15050 | Ø14 | Ø25 | 500 | 475 | 70 |
| WLS15040 | Ø12 | Ø19 | 476 | 457 | 60 |



WLS510

Original Code: LS512
Product Name: Handle
Main Material: SS304
Finish: Mirror/Satin
Applicable Glass Thickness: 8-12mm

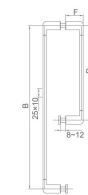
| Code | Drilling size | Pipe size | B(mm) | D(mm) | F(mm) |
|----------|---------------|-----------|-------|-------|-------|
| WLS51030 | Ø12 | 20*20 | 475 | 275 | 60 |



WLS160

Original Code: LS506
Product Name: Handle
Main Material: SS304
Finish: Mirror/Satin
Applicable Glass Thickness: 8-12mm

| Code | Drilling size | Pipe size | L(mm) | B(mm) | D(mm) |
|----------|---------------|-----------|-------|-------|-------|
| WLS16050 | Ø14 | Ø25 | 500 | 475 | 70 |
| WLS16040 | Ø12 | Ø19 | 476 | 457 | 60 |
| WLS16030 | Ø14 | Ø25 | 300 | 275 | 70 |
| WLS16020 | Ø12 | Ø19 | 171 | 152 | 60 |

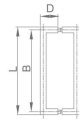


WLS511

Original Code: LS515
Product Name: Handle
Main Material: SS304
Finish: Mirror/Satin
Applicable Glass Thickness: 8-12mm

| Code | Drilling size | Pipe size | B(mm) | D(mm) | F(mm) |
|----------|---------------|-----------|-------|-------|-------|
| WLS51150 | Ø12 | 25*10 | 475 | 275 | 50 |





WLS560

Original Code: LS509
 Product Name: Handle
 Main Material: SS304
 Finish: Mirror/Satin
 Applicable Glass Thickness: 8-12mm

| Code | Drilling size | Pipe size | L(mm) | B(mm) | D(mm) |
|----------|---------------|-----------|-------|-------|-------|
| WLS56020 | Ø12 | 30*15 | 180 | 165 | 40 |
| WLS56030 | Ø12 | 30*15 | 290 | 275 | 55 |



WLS563

Original Code: LS516
 Product Name: Handle
 Main Material: SS304
 Finish: Mirror/Satin
 Applicable Glass Thickness: 8-12mm

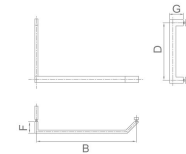
| Code | Drilling size | Pipe size | L(mm) | B(mm) | D(mm) |
|----------|---------------|-----------|-------|-------|-------|
| WLS56350 | Ø12 | 25*10 | 495 | 475 | 50 |



WLS561

Original Code: LS513
 Product Name: Handle
 Main Material: SS304
 Finish: Mirror/Satin
 Applicable Glass Thickness: 8-12mm

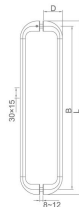
| Code | Drilling size | Pipe size | L(mm) | B(mm) | D(mm) |
|----------|---------------|-----------|-------|-------|-------|
| WLS56130 | Ø12 | 30*10 | 477 | 457 | 55 |



WLS570

Original Code: LS507
 Product Name: Handle
 Main Material: SS304
 Finish: Mirror/Satin
 Applicable Glass Thickness: 8-12mm

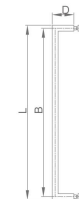
| Code | Drilling size | Pipe size | B(mm) | D(mm) | F(mm) | G(mm) |
|----------|---------------|-----------|-------|-------|-------|-------|
| WLS57050 | Ø12 | 30*15 | 475 | 275 | 55 | 65 |



WLS562

Original Code: LS514
 Product Name: Handle
 Main Material: SS304
 Finish: Mirror/Satin
 Applicable Glass Thickness: 8-12mm

| Code | Drilling size | Pipe size | L(mm) | B(mm) | D(mm) |
|----------|---------------|-----------|-------|-------|-------|
| WLS56250 | Ø12 | 30*15 | 505 | 475 | 55 |



WLS580

Original Code: LS508
 Product Name: Handle
 Main Material: SS304
 Finish: Mirror/Satin
 Applicable Glass Thickness: 8-12mm

| Code | Drilling size | Pipe size | L(mm) | B(mm) | D(mm) |
|----------|---------------|-----------|-------|-------|-------|
| WLS58050 | Ø12 | 30*15 | 490 | 475 | 55 |



Shower room Hardware



WLS91010

Original Code: YL1101
Product Name: Handle
Main Material: SS304
Finish: Mirror/Satin
Glass Door Thickness: 8-12mm
Drilling Size: Ø12



WLS91020

Original Code: YL1102
Product Name: Handle
Main Material: SS304
Finish: Mirror/Satin
Glass Door Thickness: 8-12mm
Drilling Size: Ø12



WLS92010

Original Code: YL1201
Product name: Handle
Main Material: SS304
Finish: Mirror/Satin
Glass Door Thickness: 8-10mm
Drilling size: Ø46



Shower room Hardware



WLS91030

Original Code: YL1103
Product Name: Handle
Main Material: SS304
Finish: Mirror/Satin
Glass Door Thickness: 8-12mm
Drilling Size: Ø12



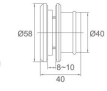
WLS91040

Original Code: YL1104
Product Name: Handle
Main Material: SS304
Finish: Mirror/Satin
Glass Door Thickness: 8-12mm
Drilling Size: Ø12



WLS92020

Original Code: YL1202
Product name: Handle
Main Material: SS304
Finish: Mirror/Satin
Glass Door Thickness: 8-10mm
Drilling size: Ø46



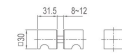
WLS91050

Original Code: YL1105
Product Name: Handle
Main Material: SS304
Finish: Mirror/Satin
Glass Door Thickness: 8-12mm
Drilling Size: Ø12



WLS91060

Original Code: YL1106
Product Name: Handle
Main Material: SS304
Finish: Mirror/Satin
Glass Door Thickness: 8-12mm
Drilling Size: Ø12



WLS92030

Original Code: YL1203
Product Name: Handle
Main Material: SS304
Finish: Mirror/Satin
Glass Door Thickness: 8-10mm
Drilling size: Ø46

