

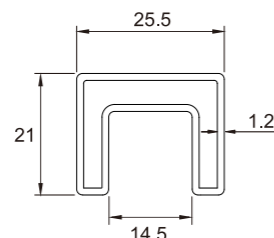
25x21mm Square Top Rail

Top rails are the preferred choice for residential and commercial glass balustrade application where an unobstructed clear view is the priority. Among all top rail profiles, the square stainless steel top rail is the most popular choice due to its timeless look.

Autran industrial's product has incorporated many innovation and improvements in our range of top rail fittings to guarantee a easy and hassle free installation.



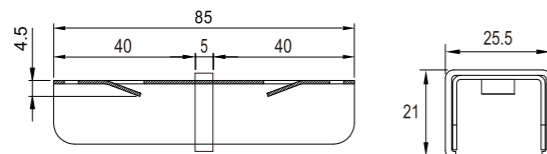
25X21mm Top Rail Slotted Tube



Code	Finish
STS2512M6	Polished
STS2512S6	Satin
STS2512B6	Matt Black

Fits onto the top of 12mm glass
316L stainless steel
5800mm long
Install with rubber or silicon

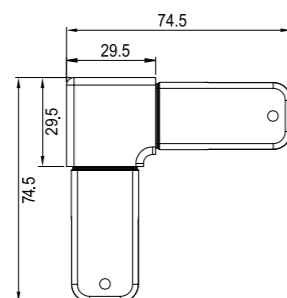
Top Rail 180 Degree Connector



Code	Finish
STS2524M6	Polished
STS2524S6	Satin
STS2524B6	Matt Black

180 degree in-line connector
316 stainless steel
Bulges on the connector make connecting firm without screw or glue

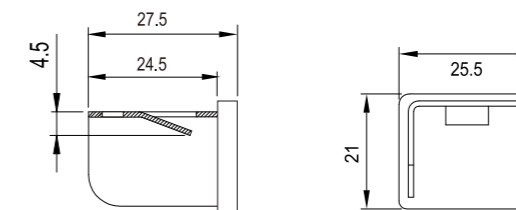
Top Rail 90 Degree Connector



Code	Finish
STS2533M6	Polished
STS2533S6	Satin
STS2533B6	Matt Black

Connects two tubes at a 90° corner
316 stainless steel
Bulges on the connector make connecting firm without screw or glue

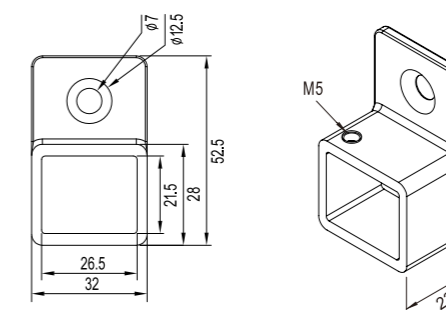
Top Rail End Cap



Code	Finish
STS2554M6	Polished
STS2554S6	Satin
STS2554B6	Matt Black

End cap
316 stainless steel
Bulges on the end cap make connecting firm without screw or glue

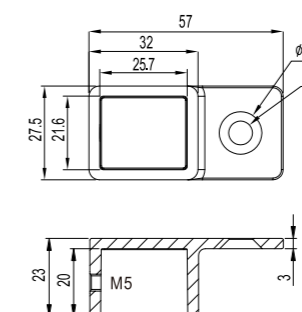
Top Rail Wall Mount Vertical Bracket



Code	Finish
STS2560M6	Polished
STS2560S6	Satin
STS2560B6	Matt Black

Connects top rail to wall
316 stainless steel
Friction fit top rail with a M5 grub screw

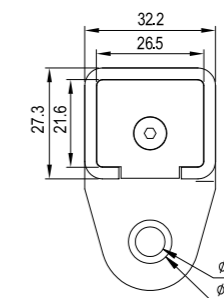
Top Rail Wall Mount Horizontal Bracket



Code	Finish
STS2561M6	Polished
STS2561S6	Satin
STS2561B6	Matt Black

Connects top rail to wall
316 stainless steel
Friction fit top rail with a M5 grub screw

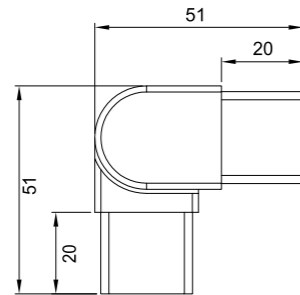
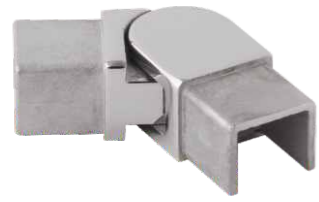
Top Rail Wall Mount Flexible Bracket



Code	Finish
STS2580M6	Polished
STS2580S6	Satin
STS2580B6	Matt Black

Connects top rail to wall
316 stainless steel
Friction fit top rail with a M5 grub screw
Universal bracket, the opening direction is Flexible so that can be fixed vertical or horizontal

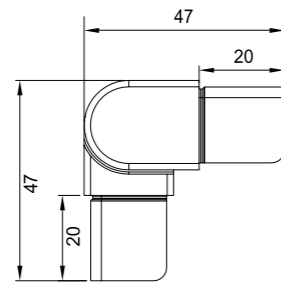
Top Rail Horizontal Adjustable Connector



Code	Finish
STS2540M6	Polished
STS2540S6	Satin
STS2540B6	Matt Black

Horizontal adjustable connector
316 stainless steel
Bulges on the connector make connecting firm without screw or glue

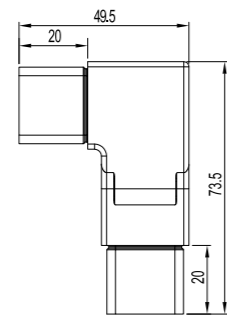
Top Rail Vertical Adjustable Connector



Code	Finish
STS2541M6	Polished
STS2541S6	Satin
STS2541B6	Matt Black

Vertical adjustable connector
316 stainless steel
From straight, up to 90° downwards joining
Bulges on the connector make connecting firm without screw or glue

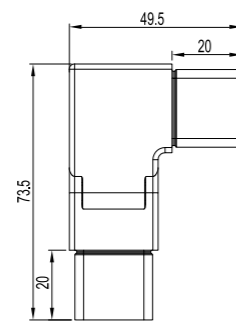
Top Rail Corner Vertical Adjustable Connector



Code	Finish
STS2574M6	Polished
STS2574S6	Satin
STS2574B6	Matt Black

Variable angles vertical swivel connector
316 stainless steel
Connects two tubes at a 90° corner
Up to 90° downwards joining
Bulges on the end cap make connecting firm without screw or glue

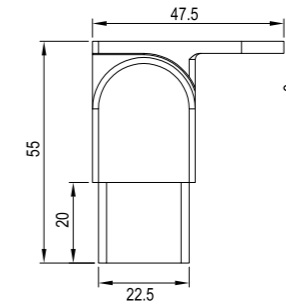
Top Rail Corner Vertical Adjustable Connector



Code	Finish
STS2575M6	Polished
STS2575S6	Satin
STS2575B6	Matt Black

Variable angles vertical swivel connector
316 stainless steel
Connects two tubes at a 90° corner
Up to 90° downwards joining
Bulges on the end cap make connecting firm without screw or glue

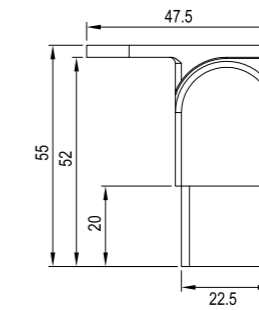
Top Rail Wall Mount Horizontal Adjustable Bracket



Code	Finish
STS2570M6	Polished
STS2570S6	Satin
STS2570B6	Matt Black

Variable angles horizontal swivel connector
316 stainless steel
From 0° to 90° glass to wall angle
Bulges on the connector make connecting firm without screw or glue

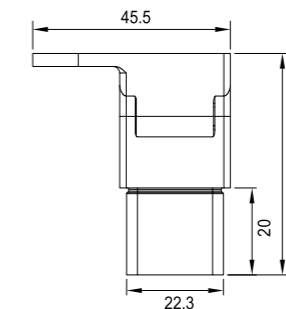
Top Rail Wall Mount Horizontal Adjustable Bracket



Code	Finish
STS2571M6	Polished
STS2571S6	Satin
STS2571B6	Matt Black

Variable angles horizontal swivel connector
316 stainless steel
From 0° to 90° glass to wall angles
Bulges on the connector make connecting firm without screw or glue

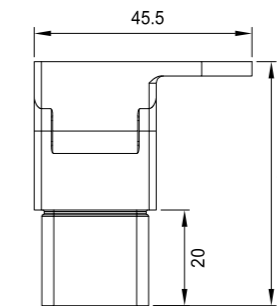
Top Rail Wall Mount Vertical Adjustable Bracket



Code	Finish
STS2572M6	Polished
STS2572S6	Satin
STS2572B6	Matt Black

Variable angles vertical swivel connector
316 stainless steel
Up to 90° downwards joining
Bulges on the end cap make connecting firm without screw or glue

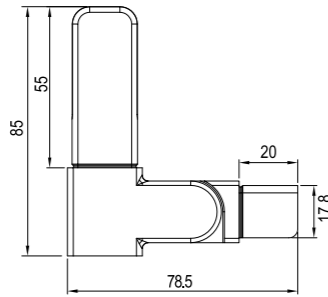
Top Rail Wall Mount Vertical Adjustable Bracket



Code	Finish
STS2573M6	Polished
STS2573S6	Satin
STS2573B6	Matt Black

Variable angles vertical swivel connector
316 stainless steel
Up to 90° downwards joining
Bulges on the end cap make connecting firm without screw or glue

Top Rail Corner Vertical Adjustable Connector

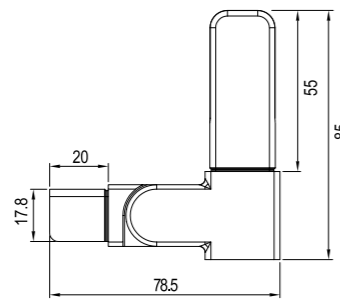


Code	Finish
STS2548M6	Polished
STS2548S6	Satin
STS2548B6	Matt Black

Variable angles vertical swivel connector
316 stainless steel
From straight, up to 90° downwards joining
Bulges on the connector make connecting firm without screw or glue



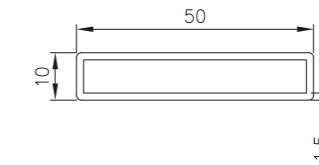
Top Rail Corner Vertical Adjustable Connector



Code	Finish
STS2547M6	Polished
STS2547S6	Satin
STS2547B6	Matt Black

Variable angles vertical swivel connector
316 stainless steel
From straight, up to 90° downwards joining
Bulges on the connector make connecting firm without screw or glue

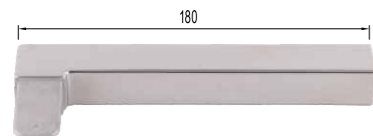
50x10mm Rectangular Handrail Tube



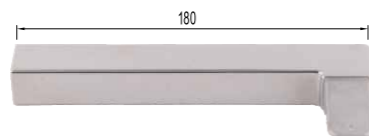
Code	Finish
SPS5110M6	Polished
SPS5110S6	Satin
SPS5110B6	Matt Black

Stylish profile with durability and great weight-bearing capability
316 stainless steel
1.5mm wall thickness

OEM also is available. We can make basing on our current items to meet your special requirements



Code: STS2537M6 (Polished)
STS2537S6 (Satin)
STS2537B6 (Matte Black)

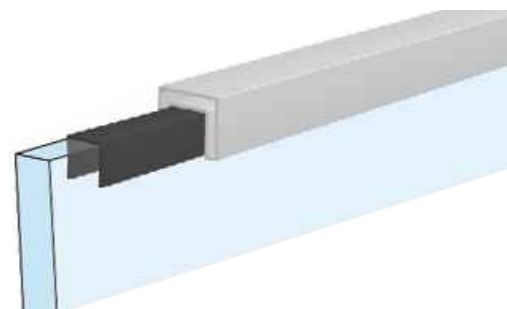


Code: STS2538M6 (Polished)
STS2538S6 (Satin)
STS2538B6 (Matte Black)



Code: STS2561M6L (Polished)
STS2561S6L (Satin)
STS2561B6L (Matte Black)

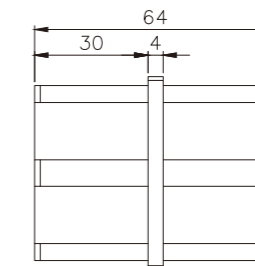
Top Rail Protective Insert



Code	Finish
STS2512M6	Black

Suitable for 12mm glass
Material: PVC
Available in length 500mm and 2900mm, also can be customized
Used for as a buffer between glass and top rail

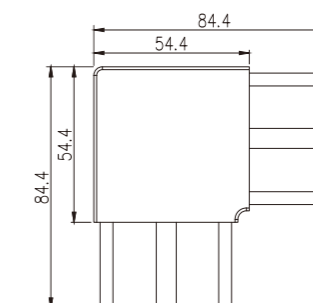
50x10mm Handrail 180 Degree Connector



Code	Finish
SPS501021M6	Polished
SPS501021S6	Satin
SPS501021B6	Matt Black

180 degree in-line connector
316 stainless steel
Epoxy glue can be used for joining strength

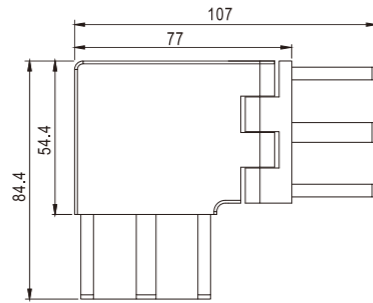
50x10mm Handrail 90 Degree Connector



Code	Finish
SPS501031M6	Polished
SPS501031S6	Satin
SPS501031B6	Matt Black

Connects two tubes at a 90° corner
316 stainless steel
Epoxy glue can be used for joining strength

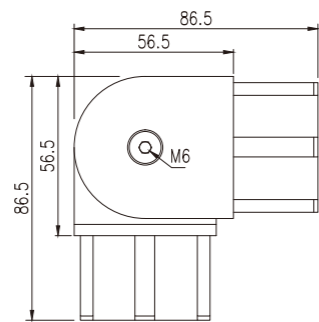
50x10mm Handrail Corner Vertical Adjustable Connector



Code	Finish
SPS501037M6	Polished
SPS501037S6	Satin
SPS501037B6	Matt Black

Variable angles vertical swivel connector
316 stainless steel
Connects two tubes at a 90° corner
From straight, up to 90° downwards joining
Epoxy glue can be used for joining strength

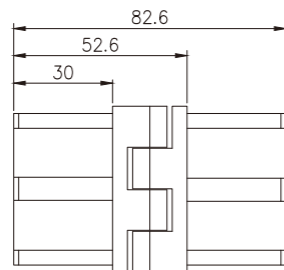
50x10mm Handrail Horizontal Adjustable Connector



Code	Finish
SPS501042M6	Polished
SPS501042S6	Satin
SPS501042B6	Matt Black

Horizontal Swivel connector
316 stainless steel
Epoxy glue can be used for joining strength

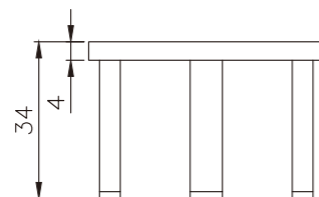
50x10mm Handrail Vertical Adjustable Connector



Code	Finish
SPS501043M6	Polished
SPS501043S6	Satin
SPS501043B6	Matt Black

Horizontal Swivel connector
316 stainless steel
Epoxy glue can be used for joining strength

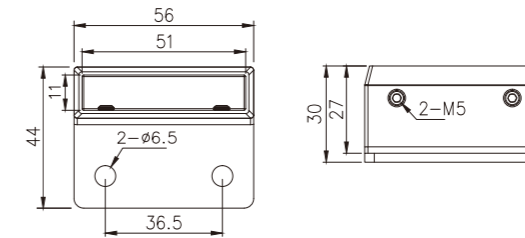
50x10mm Handrail End Cap



Code	Finish
SPS501051M6	Polished
SPS501051S6	Satin
SPS501051B6	Matt Black

End cap
316 stainless steel
Epoxy glue can be used for joining strength

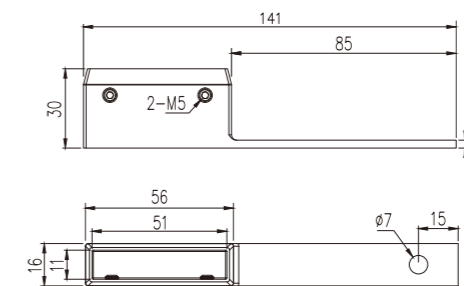
50x10mm Handrail Wall Mount Bracket



Code	Finish
SPS501060M6	Polished
SPS501060S6	Satin
SPS501060B6	Matt Black

Connects handrail to wall
316 stainless steel
Friction fit tube with a M5 grub screw

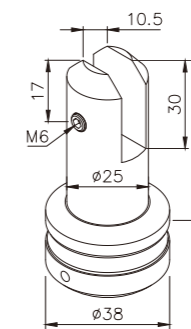
50x10mm Handrail Wall Mount End Cap



Code	Finish
SPS501061M6	Polished
SPS501061S6	Satin
SPS501061B6	Matt Black

Wall mount end cap
316 stainless steel
Friction fit tube with a M5 grub screw

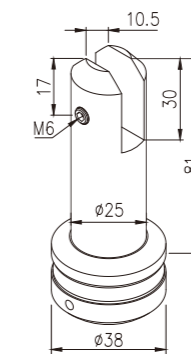
50x10mm Handrail Glass Mount Bracket



Code	Finish
SPS501070M6	Polished
SPS501070S6	Satin
SPS501070B6	Matt Black

Fixed in glass through a hole
316 stainless steel
Friction fit tube with a M6 grub screw
The gap between tube and glass is 31mm

50x10mm Handrail Glass Mount Bracket



Code	Finish
SPS501071M6	Polished
SPS501071S6	Satin
SPS501071B6	Matt Black

Fixed in glass through a hole
316 stainless steel
Friction fit tube with a M6 grub screw
The gap between tube and glass is 51mm

Diameter 38mm Handrail



Code	Finish
SPR3810M6	Polished
SPR3810S6	Satin
SPR3810B6	Matt Black

Material: 316 Stainless Steel

Code	Finish
SPR3820M6	Polished
SPR3820S6	Satin
SPR3820B6	Matt Black

Material: 316 Stainless Steel

Code	Finish
SPR3830M6	Polished
SPR3830S6	Satin
SPR3830B6	Matt Black

Material: 316 Stainless Steel

Code	Finish
SPR3840M6	Polished
SPR3840S6	Satin
SPR3840B6	Matt Black

Material: 316 Stainless Steel

Code	Finish
SPR3850M6	Polished
SPR3850S6	Satin
SPR3850B6	Matt Black

Material: 316 Stainless Steel

Code	Finish
SPR3860M6	Polished
SPR3860S6	Satin
SPR3860B6	Matt Black

Material: 316 Stainless Steel

Diameter 50.8mm Handrail



Code	Finish
SPR5010M6	Polished
SPR5010S6	Satin
SPR5010B6	Matt Black

Material: 316 Stainless Steel

Code	Finish
SPR5020M6	Polished
SPR5020S6	Satin
SPR5020B6	Matt Black

Material: 316 Stainless Steel

Code	Finish
SPR5030M6	Polished
SPR5030S6	Satin
SPR5030B6	Matt Black

Material: 316 Stainless Steel

Code	Finish
SPR5040M6	Polished
SPR5040S6	Satin
SPR5040B6	Matt Black

Material: 316 Stainless Steel

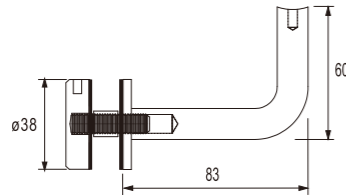
Code	Finish
SPR5050M6	Polished
SPR5050S6	Satin
SPR5050B6	Matt Black

Material: 316 Stainless Steel

Code	Finish
SPR5060M6	Polished
SPR5060S6	Satin
SPR5060B6	Matt Black

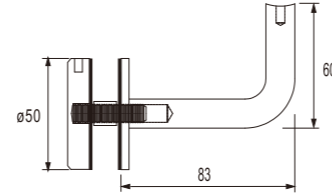
Material: 316 Stainless Steel

Handrail Bracket



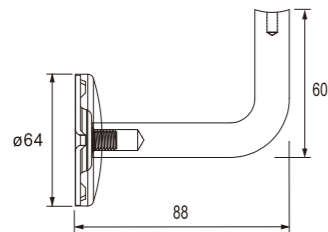
Code	Finish
SBR6081M6	Polished
SBR6081S6	Satin
SBR6081B6	Matt Black

Material: 316 Stainless steel
Suitable for 10mm-13.52mm glass
Diameter 13mm stem
10mm thickness bracket cap
Available saddle: Ø38, Ø50.8 and flat



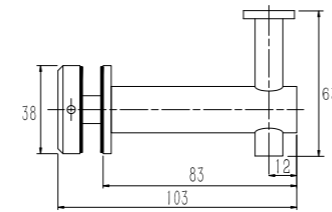
Code	Finish
SBR6082M6	Polished
SBR6082S6	Satin
SBR6082B6	Matt Black

Material: 316 Stainless steel
Suitable for 10mm-13.52mm glass
Diameter 13mm stem
10mm thickness bracket cap
Available saddle: Ø38, Ø50.8 and flat



Code	Finish
SBR6080M6	Polished
SBR6080S6	Satin
SBR6080B6	Matt Black

Material: 316 Stainless steel
3xØ38 fixing holes in wall plate
Available saddle: Ø38, Ø50.8 and flat



Code	Finish
SBR6083M6	Polished
SBR6083S6	Satin
SBR6083B6	Matt Black

Material: 316 Stainless steel
Suitable for 10mm-13.52mm glass
10mm thickness bracket cap
Available saddle: Ø38, Ø50.8 and flat



Saddle for Ø50.8mm tube

Code	Finish
SBR6080-4M6	Polished
SBR6080-4S6	Satin
SBR6080-4B6	Matt Black

Material: 316 Stainless steel
Come with a countersunk screw
to fix onto bracket



Saddle for flat tube

Code	Finish
SBR6080-5M6	Polished
SBR6080-5S6	Satin
SBR6080-5B6	Matt Black

Material: 316 Stainless steel
Come with a countersunk screw
to fix onto bracket



Saddle for Ø38mm tube

Code	Finish
SBR6080-6M6	Polished
SBR6080-6S6	Satin
SBR6080-6B6	Matt Black

Material: 316 Stainless steel
Come with a countersunk screw
to fix onto bracket

