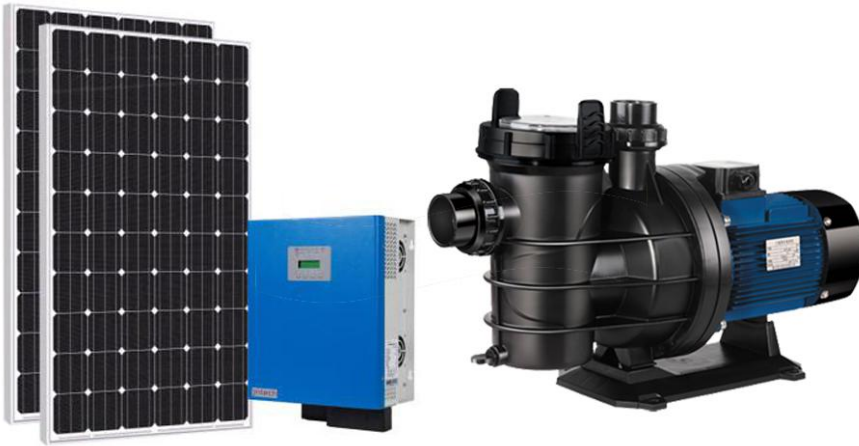


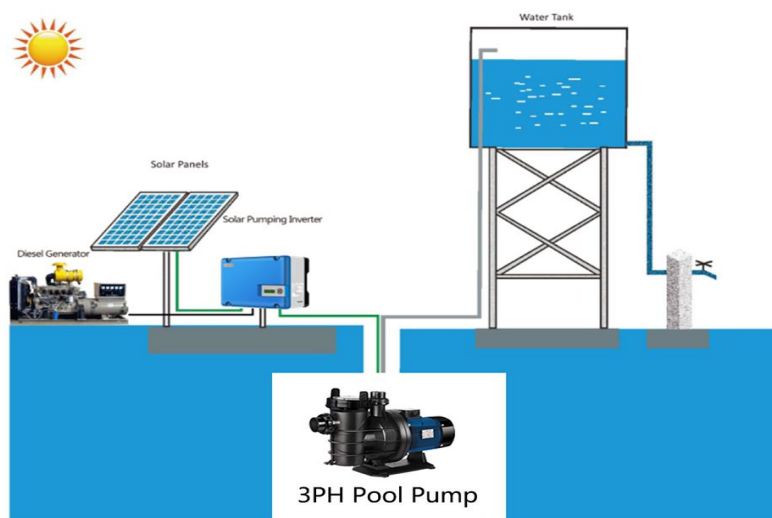
AC Pool Pump System

MAYGO



Features:

Photovoltaic water pump system consists of the following four parts: Solar cell, Panel, Photovoltaic water pump inverter, Three-phase AC water pump and water storage device. Pv pump inverter solar panels generate DIRECT current conversion. For alternating current, alternating current drives alternating current pumps to drill holes, rivers, A water storage device for pumping water, as in a lake. The inverter adopts efficient MPPT algorithm to maximize. The earth uses electricity from solar panels. This solar pump inverter is specially designed for field irrigation, drinking water in small towns pump system, using hybrid design with solar and utility/DG Energy online complementation.



| AC Inverter Performance Tabel | | | |
|--------------------------------------|--------------------------------|-----------------|-----------------|
| Model | JNP1K1L | JNP1K5L | JNP2K2L |
| DC Input | | | |
| Maximum DC Input Voltage | 440Vdc | 440Vdc | 440Vdc |
| MPPT Voltage Range | 150-400Vdc | 150-400Vdc | 150-400Vdc |
| Maximum DC Input Current | 8A | 10A | 21A |
| Maximum MPPT Efficiency | 99% | 99% | 99% |
| Input Road | 1 | 1 | 2 |
| AC Output | | | |
| Maximum Motor Input Power | 1.1KW | 1.5KW | 2.2KW |
| Rated Output Voltage | 220-240Vac 3ph | 220-240Vac 3ph | 220-240Vac 3ph |
| Output Frequency Range | 0-50/60Hz | 0-50/60Hz | 0-50/60Hz |
| Rated Output Current | 5.5A | 7A | 11A |
| other parameters | | | |
| Weight | 9.5kg | 9.5kg | 9.5kg |
| Dimensions (W*H*L) | 350*278*179mm | 350*278*179mm | 420*310*211mm |
| Maximum Efficiency | 97% | 97% | 97% |
| Protection Level | I | I | I |
| Protection Grade | IP65 | IP65 | IP65 |
| Operating Ambient Temp | - 25°C to +60°C | - 25°C to +60°C | - 25°C to +60°C |
| Cooling Way | Nature Cooling | Nature Cooling | Nature Cooling |
| Display | LCD | LCD | LCD |
| Communication | RS485/GPRS | RS485/GPRS | RS485/GPRS |
| Max Altitude | 3000m | 3000m | 3000m |
| Noise | <50dB | <50dB | <50dB |
| Conform To The Standard | EN50178;IEC/EN62109-1;IEC61800 | | |

3PH AC High Efficient Pool Pump

| Model | P ₁ | | Pipe | Max Head | Max Flow | | Packing Size L*W*H(cm) | CMB | GW(KG) |
|--------|----------------|------|------|----------|---------------------|---------|---------------------------|-------|--------|
| | (KW) | (HP) | Inch | (m) | (m ³ /h) | (l/min) | | | |
| NSA120 | 1.1 | 1.5 | 2 | 12.0 | 24.0 | 400 | 76*35*44 | 0.117 | 19.6 |
| NSA150 | 1.5 | 2 | 2 | 14.7 | 27.0 | 450 | 76*35*44 | 0.117 | 20.6 |
| NSA250 | 2.2 | 3 | 2 | 19.0 | 35.0 | 583 | 76*35*44 | 0.117 | 24.7 |

How to configure the system?

Solar Panel(buy in local)+AC inverter+3ph pool pump

JNP1K1L+NSA120 pool pump,1.1KW,1.5HP,2inch

JNP1K5L+NSA150 pool pump,1.5KW,2HP,2inch

JNP2K2L+NSA250 pool pump,2.2KW,3HP,2inch