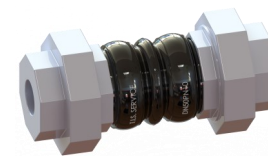


## GIUNTO IN GOMMA ANTIVIBRANTE FILETTATO F/F PN 10

## F/F THREADED RUBBER FLEXIBLE JOINT PN 10

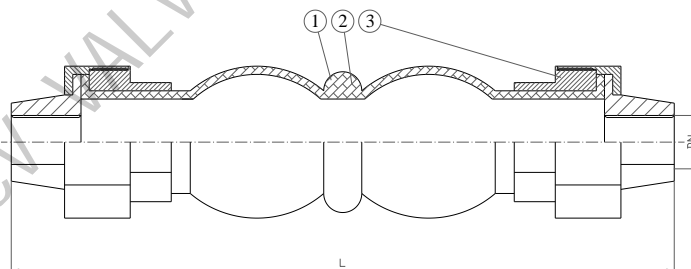


### APPLICAZIONE:

Acqua e altri liquidi non pericolosi per sistemi industriali (compatibili con i materiali della valvola).

### APPLICATION:

water and other non-hazardous liquids for industrial systems (compatible with valve materials).



COMPONENTI - PARTS		MATERIALI - MATERIALS
1	CORPO BODY	EPDM EPDM
2	RINFORZO REINFORCE	NYLON NYLON
3	GIUNTO UNION	GHISA SFEROIDALE ZINCATA DUCTILE IRON ZINC PLATED

TEMPERATURA DI ESERCIZIO	WORKING TEMPERATURE
Max. +80°C	Max. +80°C
ESTREMITA' FILETTATE	THREAD END
Filettate F/F BSPP ISO 228-1	ISO 228-1 BSPP F/F thread

Dim (Inch)	DN	L	Movimenti assiali - Axial displacement		Movimento laterale Lateral displacement	Angolo di inclinazione Angle of deflection	W (kg)
			Compressione Compression	Estensione Extension			
1/2	15	200	22	6	22	20°	0.7
3/4	20	200	22	6	22	20°	0.8
1	25	200	22	6	22	20°	1.2
1 1/4	32	200	22	6	22	20°	1.5
1 1/2	40	200	22	6	22	20°	2.1
2	50	200	22	6	22	20°	2.7
2 1/2	65	240	22	6	22	20°	4.0
3	80	240	22	6	22	20°	5.7