



About Us/ Certificate

Over 20 Years Of OEM & ODM Experience In Gas Water Heater, Gas Hob and Range Hood

- OEM & ODM gas Water Heater, gas hob and range hood since 2000.
- Established in 2000, the past over 20 years witnessed great chances of our product, R&D, quality level, and service as well. From now on, Greaidea has its own two production bases with over 500 employees, covering 100,000m². In order to meet the growing marketing needs, we have equipped with 6 assembly lines for gas hob and range hood, 3 assembly lines for gas water heater.

20⁺Y

Since 2000

2

Production bases

500+

Staffs

10000m²

Area

9

Assembly lines

Gas Water Heater Division

Greaidea has over 20 year's experience in manufacturing high quality gas water heater. Our gas water heater factory locates in Shunde, Foshan city. In our R&D department, 12 engineers are employed to guarantee our R&D advantage and innovation advantage. Testing room and assembly line have been upgraded. Every year, 3% of revenue will be invested to R&D. With excellent manufacturing team & QC team, we realize the annual output 500,000pcs with optimal quality for gas water heater.

Gas water heater: 500,000 pcs / year

Greaidea[®]

Gas Hob & Water Heater ODM Leader
Since 2000

Greaidea Gas and Electrical Appliances Co.,Ltd

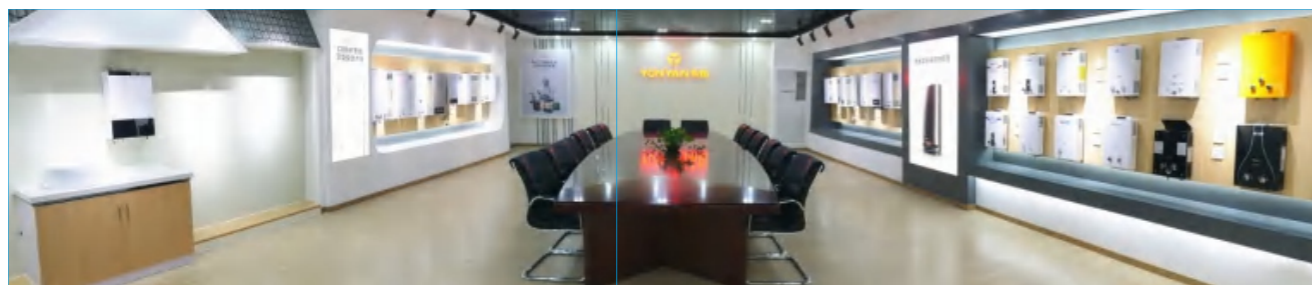


LVD RoHS EMC ERP



Water Heater Team

Show Room



Workshop



Office



Web: www.greadiea.com

Email: info@greadiea.com

Quality Control

- ▶ Integrated Testing Lab overview
- ▶ Comprehensive Testing Room
- ▶ Key Parts Performance Testing Room
- ▶ Environment And Packing Testing Room
- ▶ Individual Water And Gas Supply Base



Integrated Testing Lab



Life Testing Equipment



Key Parts Performance Testing Room



Water Heater Integrated Automatic Testing Equipment



Burner, Heat Exchanger And Gas Valve Testing Equipment



Integrated Testing Lab



Integrated Testing Lab

Web: www.greadiea.com

Email: info@greadiea.com



EU Low NOx GAS WATER HEATER

Since Sept. 26, 2018, all gas heaters placed on the European market for the first time must have emissions below 56 mg/kWh. This new generation of Low NOx heaters achieves a level well below what is established by the regulations.



JSD22-M1LP
JSD22-M1GN

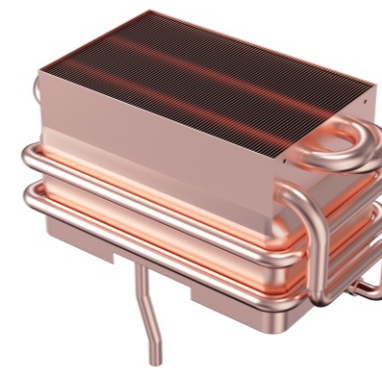


IMD



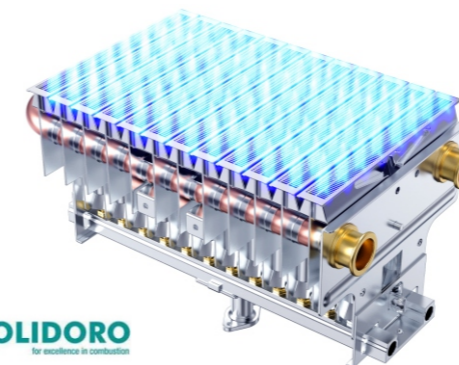
JSD22-D3LP
JSD22-D3GN

- With ERP certificate: **A**
- Atmospheric gas water heater of 11L/min
- Low NOx emissions
- Ignition by batteries. Automatic flammulation
- Available for natural gas, propane and butane
- No pilot light: more gas savings
- Variable and modulating power
- White LED digital display



Oxygen-free copper Heat Exchanger

The oxidation treatment of the oxygen-free copper water tank can prevent the water tank from oxidation or corrosion in the course of use, and has high thermal conductivity and long service life.



Cooled Burner (Cool System)

Exclusive cooled burner, specifically designed and built to be able to cool the flame base throughout its entire path, thus drastically reducing NOx emissions into the atmosphere, maximizing its performance.

POLIDORO
FOR EFFICIENCY IN COMBUSTION

Patent No. CN 107787429 A



JSD22-D2LP
JSD22-D2GN



JSD22-D1LP
JSD22-D1GN



JSD22-D5LP
JSD22-D5GN



JSD22-D4LP
JSD22-D4GN



JSD22-B1LP
JSD22-B1GN



JSD22-B2LP
JSD22-B2GN

MODELS-11L	JSD22-B1	JSD22-B2	JSD22-D1	JSD22-D2
	JSD22-D3	JSD22-M1	JSD22-M2	JSD22-M3
Gas categories	LPG		GN	
Nominal heat flow rate(Max/Min,kw)	22/8.5		22/8.5	
Gas type	G30/G31		G20/G25	
Gas pressure (mbar)	29/37		20/25	
Hot water capacity ($\Delta t=25^{\circ}$ C,L/min)	11		11	
Net weight (kg)	11		10	
Power supply	Batteries(DC 3V)		Batteries(DC 3V)	
Product Dimension	610x340x180 MM		550x340x180 MM	
Packing Dimension	395x235x710 MM		705x395x235 MM	
Loading Quantity (20GP/40GP/40HQ)	420/870/1020		420/870/1020	

On-time Delivery

- 500,000 Units
(annual production capacity)

Continuous Innovation

- Over 20 Professional engineers
- >3% Continuous investment/Year

Reliable Quality

- Twice 100% Inspection
- National standard testing lab

Professional Logistics

- Export to over 40 countries
- 200 Containers delivery/Year



Greaidea®

Gas Water Heater ODM Leader
Since 2000



RoHS ERP

LVD EMC

Greaidea Gas and Electrical Appliances Co.,Ltd

Address: No. 1 Weihua Road, Gaoli New High Tech Industry Zone,
Ronggui Town, Shunde District, Foshan, Guangdong, China

Web: www.greaidea.com /www.cehob.com

Email: info@greaidea.com