

# HC-CA050-20GM/GC/GN

5 MP 1" CMOS GigE Area Scan Camera



GEN<img alt="GENiCAM logo" data-bbox="665 200 894 231"/>CAM

GigE  
VISION

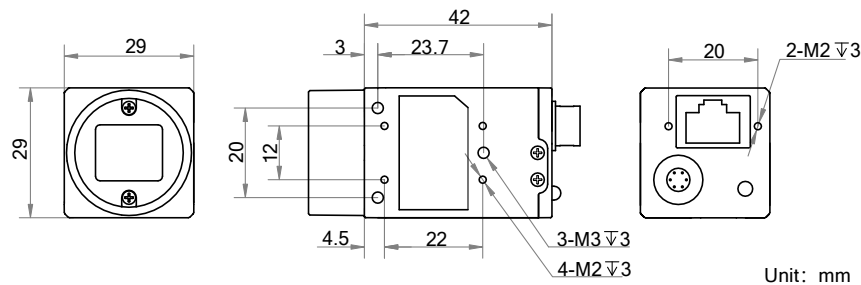
## Introduction

HC-CA050-20GM/GC/GN camera is a high quality device that can be used in a variety of applications, including electronic semiconductor fabrication, factory automation, quality inspection, etc.

## Key Feature

- Adopts GigE interface and max. transmission distance of 100 meters without relay.
- Up to 128 MB local memory for burst transmission and retransmission.
- Supports auto exposure control, LUT, Gamma correction, etc.
- Supports hardware trigger, software trigger, etc.
- Compatible with GigE Vision V1.2 Protocol and the third-party software based on the protocol.

## Dimension



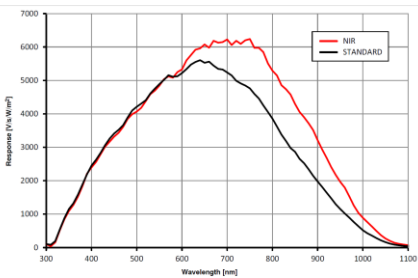
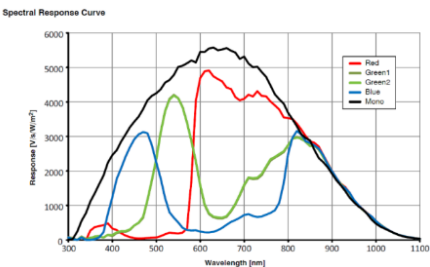
## Available Model

- Mono camera:HC-CA050-20GM
- Color camera: HC-CA050-20GC
- Near-infrared camera: HC-CA050-20GN

## Applicable Industry

Electronic semiconductor, factory automation, quality inspection, etc.

## Sensor Quantum Efficiency



## Specification

| Model              | HC-CA050-20GM   | HC-CA050-20GC   | HC-CA050-20GN        |
|--------------------|---|---|----------------------|
| Camera             |   |   |                      |
| Sensor type        | CMOS, global shutter  |   |                      |
| Sensor model       | PYTHON5000  |   |                      |
| Pixel size         | 4.8 μm × 4.8 μm   |   |                      |
| Sensor size        | 1"  |   |                      |
| Resolution         | 2592 × 2048   |   |                      |
| Max. frame rate    | 22 fps @2592 × 2048   |   |                      |
| Dynamic range      | 57.5 dB   |   |                      |
| SNR                | 39.5 dB   |   |                      |
| Gain               | 0 dB to 15 dB   | 0 dB to 10 dB   | 0 dB to 15 dB        |
| Exposure time      | 65 μs to 10 sec   |   |                      |
| Exposure mode      | Off/Once/Continuous exposure mode   |   |                      |
| Mono/color         | Mono  | Color   | Near-infrared        |
| Pixel format       | Mono 8/10/10p/12/12p  | Mono 8/10/12, Bayer BG<br>8/10/10p/12/12p,<br>YUV422Packed,<br>YUV422_YUYV_Packed,<br>RGB 8 | Mono 8/10/10p/12/12p |
| Binning            | Supports 1 × 1, 1 × 2, 2 × 1, 1 × 4, 4 × 1, 2 × 2, 2 × 4, 4 × 2, 4 × 4  |   |                      |
| Decimation         | Supports 1 × 1, 2 × 2   |   |                      |
| Reverse image      | Supports horizontal and vertical reverse image output   |   |                      |
| Image buffer       | 128 MB  |   |                      |
| Electrical feature |   |   |                      |
| Data interface     | Gigabit Ethernet, compatible with Fast Ethernet   |   |                      |
| Digital I/O        | 6-pin Hirose connector provides power and I/O, including opto-isolated input × 1 (Line 0), opto-isolated output × 1 (Line 1), bi-directional non-isolated I/O × 1 (Line 2). |   |                      |
| Power supply       | 12 VDC, supports PoE  |   |                      |
| Power consumption  | Typ. 3.3 W@12 VDC   |   |                      |
| Mechanical         |   |   |                      |
| Lens mount         | C-Mount   |   |                      |
| Dimension          | 29 mm × 29 mm × 42 mm (1.1" × 1.1" × 1.7")  |   |                      |
| Weight             | Approx. 68 g (0.15 lb.)   |   |                      |
| Ingress protection | IP30 (under proper lens installation and wiring)  |   |                      |
| Temperature        | Working temperature: 0 °C to 50 °C (32 °F to 122 °F)<br>Storage temperature: -30 °C to 70 °C (-22 °F to 158 °F)   |   |                      |
| Humidity           | 20% to 80% RH, non-condensing   |   |                      |
| General            |   |   |                      |
| Client software    | MVS or third-party software meeting with GigE Vision Protocol   |   |                      |
| Operating system   | 32/64-bit Windows XP/7/10, 32/64-bit Linux and 64-bit MacOS   |   |                      |
| Compatibility      | GigE Vision V1.2, GenICam   |   |                      |
| Certification      | CE, FCC, RoHS, KC   |   |                      |