

HC-CA050-11UM/UC

5.0 MP 2/3" CMOS USB3.0 Area Scan Camera



GEN*i*CAM

US3TM
VISION

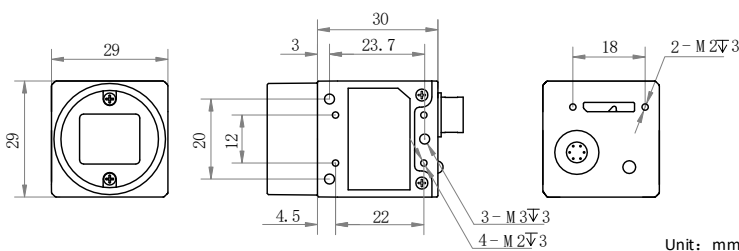
Introduction

HC-CA050-11UM/UC camera adopts Sony® IMX264 sensor to provide high-quality image. It uses USB3.0 interface to transmit non-compressed images in real time, and its max. frame rate can reach 35.1 fps in full resolution.

Key Feature

- Supports auto and manual adjustment for gain, exposure control, LUT, Gamma correction, etc.
- Supports hardware triggering, software triggering and free run mode.
- Adopts M2 screw holes for securing cable that connects USB3.0 interface.
- Compatible with USB3 Vision Protocol, GenICam Standard, and the third-party software based on these protocol and standard.

Dimension



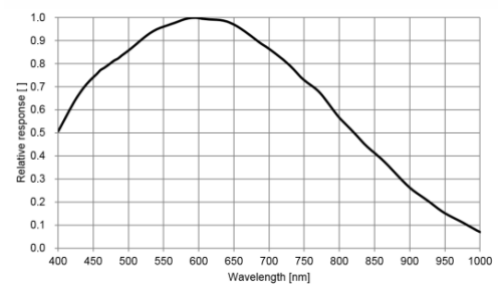
Available Model

- Mono camera: HC-CA050-11UM
- Color camera: HC-CA050-11UC

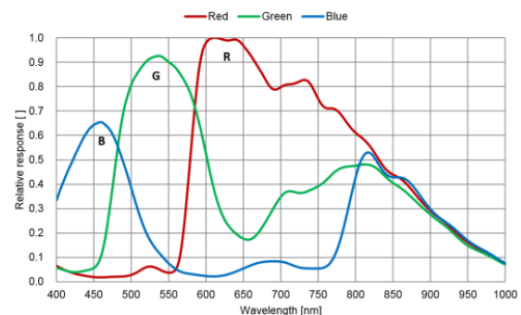
Applicable Industry

Electronic semiconductor, factory automation, liquor and beverage, medicine packing, etc.

Sensor Quantum Efficiency



HC-CA050-11UM



HC-CA050-11UC

Specification

Model	HC-CA050-11UM		HC-CA050-11UC
Camera			
Sensor type	CMOS, global shutter		
Sensor model	Sony® IMX264		
Pixel size	3.45 μm × 3.45 μm		
Sensor size	2/3"		
Resolution	2448 × 2048		
Max. frame rate	35.1 fps @2448 × 2048		
Dynamic range	72 dB		
SNR	40.2 dB		
Gain	0 dB to 17 dB		
Exposure time	UltraShort exposure mode: 1 μs to 14 μs		
	Standard exposure mode: 15 μs to 10 sec		
Exposure mode	Off/Once/Continuous exposure mode		
Mono/color	Mono	Color	
Pixel format	Mono 8/10/10p/12/12p	Mono 8/10/12, Bayer GB 8/10/10p/12/12p, YUV422Packed, YUV422_YUYV_Packed, RGB 8, BGR 8	
Binning	Supports 1 × 1, 2 × 2, 4 × 4		
Decimation	Supports 1 × 1, 2 × 2		
Reverse image	Supports horizontal and vertical reverse image output		
Image buffer	128 MB		
Electrical feature			
Data interface	USB3.0, compatible with USB2.0		
Digital I/O	6-pin Hirose connector provides power and I/O, including opto-isolated input × 1 (Line 0), opto-isolated output × 1(Line 1), and bi-directional non-isolated I/O × 1 (Line 2)		
Power supply	12 VDC, supports USB3.0 power supply		
Power consumption	Typ. 2.8 W @5 VDC (USB3.0 provides power supply)		
Mechanical			
Lens mount	C-Mount		
Dimension	29 mm × 29 mm × 30 mm (1.1" × 1.1" × 1.2")		
Weight	Approx. 56 g (0.12 lb.)		
Ingress protection	IP30 (under correct lens installation and wiring)		
Temperature	Working temperature: 0 °C to 50 °C (32 °F to 122 °F) Storage temperature: -30 °C to 70 °C (-22 °F to 158 °F)		
Humidity	20% to 80% RH, non-condensing		
General			
Client software	MVS or third-party software meeting with USB3 Vision Protocol		
Operating system	32/64-bit Windows XP/7/10, 32/64-bit Linux and 64-bit MacOS		
Compatibility	USB3 Vision, GenICam		
Certifications	CE, FCC, RoHS, KC		