

HC-CA004-10GM/GC

0.4 MP 1/2.9" CMOS GigE Area Scan Camera



GEN< i >CAM

GigE
VISION

Introduction

HC-CA004-10GM/GC adopts Sony® IMX 287 CMOS sensor and provides high quality image. The GigE interface provides high-speed real-time transmission of uncompressed data with the maximum frame rate reaching 312.9 fps at full resolution.

Key Feature

- Adopts GigE interface and max. transmission distance of 100 meters without relay.
- Supports auto and manual adjustment for gain, exposure control, white balance, LUT, Gamma correction, etc.
- Up to 128 MB local memory for burst transmission and retransmission.
- Compatible with GigE Vision Protocol V1.2, GenICam standard and third-party software meeting with GigE Vision Protocol.

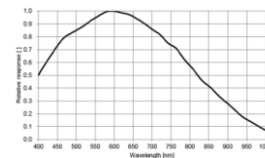
Available Model

- Mono camera: HC-CA004-10GM
- Color camera: HC-CA004-10GC

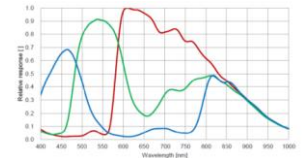
Applicable Industry

Electronic semiconductor, factory automation, quality inspection, etc.

Sensor Quantum Efficiency

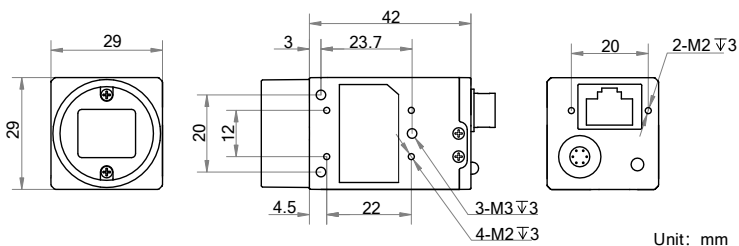


HC-CA004-10GM



HC-CA004-10GC

Dimension



Specification

Model	HC-CA004-10GM	HC-CA004-10GC
Camera		
Sensor type	CMOS, global shutter	
Sensor model	Sony® IMX287	
Pixel size	6.9 μm × 6.9 μm	
Sensor size	1/2.9"	
Resolution	720 × 540	
Max. frame rate	312.9 fps @720 × 540	
Dynamic range	74 dB	
SNR	41 dB	
Gain	0 dB to 20 dB	
Exposure time	1 μs to 10 sec	
Exposure mode	Off/ Once/ Continuous exposure mode	
Mono/color	Mono	Color
Pixel format	Mono 8/10/10p/12/12p	Mono 8/10/12, Bayer GR 8/10/10p/12/12p YUV 422 Packed, YUV422_YUYV_Packed, RGB 8
Binning	Not support	
Decimation	Not support	
Reverse image	Supports horizontal and vertical reverse image	
Image buffer	128 MB	
Electrical feature		
Data interface	Gigabit Ethernet, compatible with Fast Ethernet	
Digital I/O	6-pin Hirose connector provides power and I/O, including opto-isolated input × 1 (Line 0), opto-isolated output × 1 (Line 1), bi-directional non-isolated I/O × 1 (Line 2).	
Power supply	9 VDC to 24 VDC, supports PoE	
Power consumption	Typ. 3.1 W@12 VDC	
Mechanical		
Lens mount	C-Mount	
Dimension	29 mm × 29 mm × 42 mm (1.1" × 1.1" × 1.7")	
Weight	Approx. 68 g (0.15 lb.)	
Ingress Protection	IP30 (under proper lens installation and wiring)	
Temperature	Working temperature: 0 °C to 50 °C (32 °F to 122 °F) Storage temperature: -30 °C to 70 °C (-22 °F to 158 °F)	
Humidity	20% to 80% RH, non-condensing	
General		
Client software	MVS or third-party software meeting with GigE Vision Protocol	
Operating system	32/64-bit Windows XP/7/10, 32/64-bit Linux or 64-bit MacOS	
Compatibility	GigE Vision V1.2, GenICam	
Certification	CE, FCC, RoHS, KC	