

HC-CB060-10UM/UC

6 MP 1/1.8" CMOS USB3.0 Board Level Camera



GEN*<i>i>*CAM

US3[™]
VISION

Introduction

HC-CB060-10UM/UC camera adopts Sony® IMX178 sensor to provide high-quality image. With single board design, it is small in size, which can meet different spatial requirements.

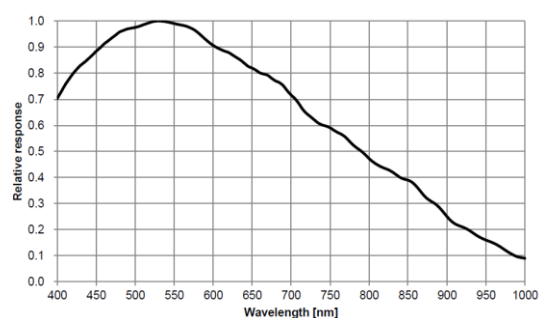
Key Feature

- Compact design for flexible installation.
- Supports auto and manual adjustment for gain, exposure control, white balance, LUT, etc.
- Adopts image interpolation algorithm for color camera to have better color correction.
- Power supply and data transmission via USB3.0 interface.
- Compatible with USB3 Vision Protocol, GenICam standard, and the third-party software based on these protocol and standard.

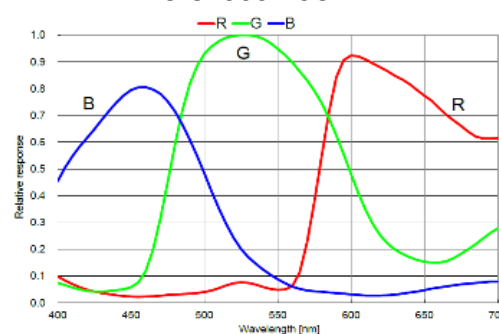
Available Model

- Single board mono camera: HC-CB060-10UM-B
- Single board color camera: HC-CB060-10UC-B
- C-mount mono camera: HC-CB060-10UM-C
- C-mount color camera: HC-CB060-10UC-C
- M12-mount mono camera: HC-CB060-10UM-S
- M12-mount color camera: HC-CB060-10UC-S

Sensor Quantum Efficiency



HC-CB060-10UM



HC-CB060-10UC

Applicable Industry

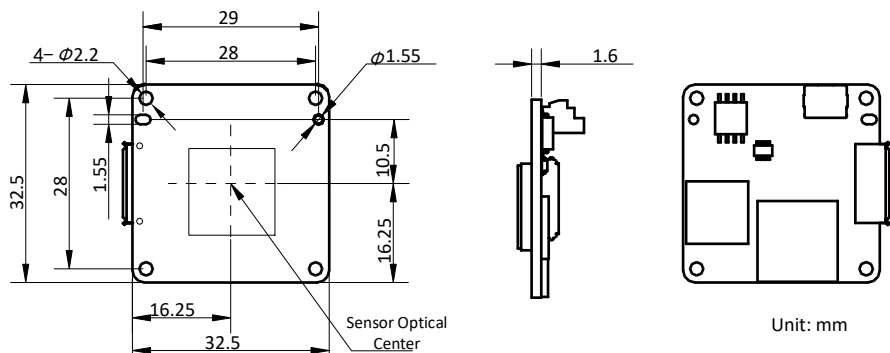
Electronic semiconductor, factory automation, logistics, liquor and beverage, medicine packing, etc.

Specification

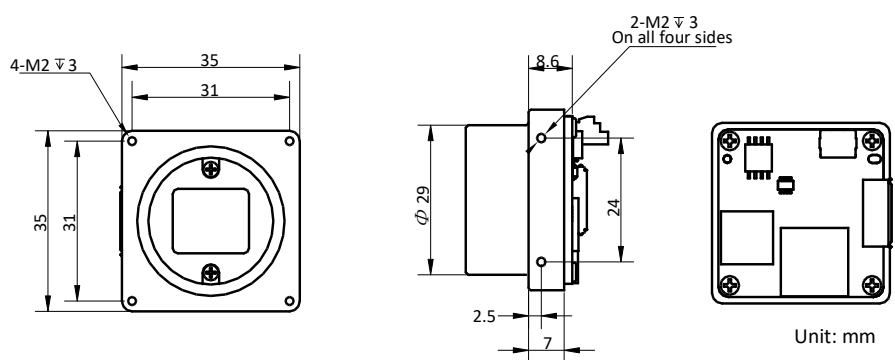
| Model | HC-CB060-10UM | | HC-CB060-10UC |
|--------------------|--|--|---------------|
| Camera | | | |
| Sensor type | CMOS, rolling shutter | | |
| Sensor model | Sony® IMX178 | | |
| Pixel size | 2.4 μm × 2.4 μm | | |
| Sensor size | 1/1.8" | | |
| Resolution | 3072 × 2048 | | |
| Max. frame rate | 17 fps @3072 × 2048 | 29 fps @3072 × 2048 | |
| Dynamic range | 71.3 dB | | |
| SNR | 41.3 dB | | |
| Gain | 0 dB to 20 dB | | |
| Exposure time | 27 μs to 2.5 sec | 16 μs to 2.5 sec (Bayer) 24 μs to 2.5 sec (other pixel formats) | |
| Exposure mode | Supports Off/ Once/ Continuous exposure mode, and Global Reset. | | |
| Mono/color | Mono | Color | |
| Pixel format | Mono 8/10/10p/12/12p | Mono8/10/12, Bayer RG 8/10/10p/12/12p YUV422Packed, YUV422_YUYV_Packed, RGB 8 | |
| Binning | Supports 1 × 1, 2 × 2 | | |
| Decimation | Not support | | |
| Reverse image | Supports horizontal reverse image output | | |
| Electrical feature | | | |
| Data interface | USB3.0 | | |
| Digital I/O | Bi-directional non-isolated I/O x 2 (Line 1, Line 2) | | |
| Power supply | USB3.0 power supply | | |
| Power consumption | Typ. 2.0 W@5 VDC | | |
| Mechanical | | | |
| Lens mount | Single board camera: none C-mount camera: C-mount M12-mount camera: M12-mount | | |
| Dimension | Single board camera: 32.5 mm × 32.5 mm × 1.6 mm (1.3" × 1.3" × 0.1") C-mount camera: 35 mm × 35 mm × 8.6 mm (1.4" × 1.4" × 0.3") M12-mount camera: 35 mm × 35 mm × 8.6 mm (1.4" × 1.4" × 0.3") | | |
| Weight | Single board camera: Approx. 10 g (0.02 lb.) C-mount camera: Approx. 30 g (0.07 lb.) M12-mount camera: Approx. 30 g (0.07 lb.) | | |
| Temperature | Working temperature: 0 °C to 50 °C (32 °F to 122 °F) Storage temperature: -30 °C to 70 °C (-22 °F to 158 °F) | | |
| Humidity | 20% to 80% RH, non-condensing | | |
| General | | | |
| Client software | MVS or third-party software with USB3 Vision Protocol | | |
| Operating system | 32/64-bit Windows XP/7/10, 32/64-bit Linux | | |
| Compatibility | USB3 Vision, GenICam | | |
| Certification | CE, FCC, RoHS, KC | | |

Dimension

Single board camera:



C-mount camera:



M12-mount camera:

