

HC-CE050-31GM/GC

5 MP 1/2.5" CMOS GigE Area Scan Camera



GEN*i*CAM

GigE
VISION

Introduction

HC-CE050-31GM/GC camera adopts Aptina AR0521 sensor to provide high-quality image. It uses GigE interface to transmit non-compressed images in real time with max. frame rate reaching 24 fps in full resolution.

Key Feature

- Adopts GigE interface and max. transmission distance of 100 meters without relay.
- Up to 128 MB local memory for burst transmission and retransmission.
- Supports auto exposure control, LUT, Gamma correction, etc.
- Supports hardware trigger, software trigger, etc.
- Compatible with GigE Vision V2.0 Protocol, GenICam Standard, and third-party software based on the protocol and standard.

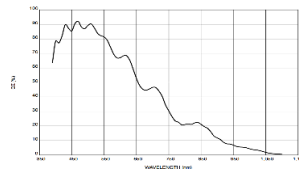
Available Model

- Mono camera: HC-CE050-31GM
- Color camera: HC-CE050-31GC

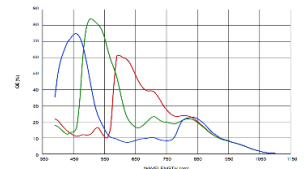
Applicable Industry

Electronic semiconductor, factory automation, logistics code reading, medical packing, quality inspection, etc.

Sensor Quantum Efficiency

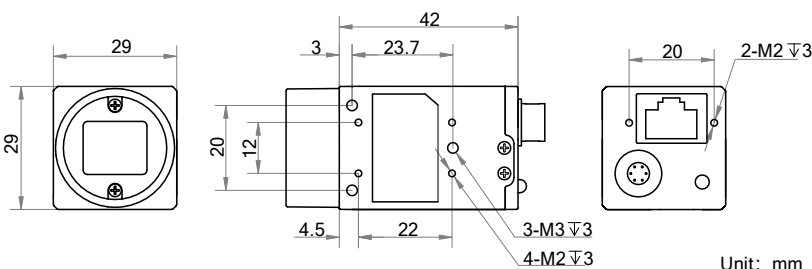


HC-CE050-31GM



HC-CE050-31GC

Dimension



Specification

Model	HC-CE050-31GM	HC-CE050-31GC
Camera		
Sensor type	CMOS, rolling shutter	
Sensor model	Aptina AR0521	
Pixel size	2.2 μm × 2.2 μm	
Sensor size	1/2.5"	
Resolution	2592 × 1944	
Max. frame rate	24 fps @2592 × 1944	
Dynamic range	63 dB	
SNR	37 dB	
Gain	0 dB to 23 dB	
Exposure time	21 μs to 1 sec	
Exposure mode	Off/Once/Continuous exposure mode	
Mono/color	Mono	Color
Pixel format	Mono 8/10/10p/12/12p	Mono 8/10/12, Bayer GB 8/10/10p/12/12p, YUV422Packed, YUV422_YUYV_Packed, BGR 8, RGB 8
Binning	Supports 1 × 1, 2 × 2, 4 × 4	
Decimation	Supports 1 × 1, 2 × 2, 4 × 4	
Reverse image	Supports horizontal and vertical reverse image output	
Image buffer	128 MB	
Electrical feature		
Data interface	Gigabit Ethernet, compatible with Fast Ethernet	
Digital I/O	6-pin Hirose connector provides power and I/O, including opto-isolated input × 1 (Line 0), opto-isolated output × 1 (Line 1), bi-directional non-isolated I/O × 1 (Line 2).	
Power supply	9 VDC to 24 VDC, supports PoE	
Power consumption	Typ. 2.4 W@12 VDC	
Mechanical		
Lens mount	C-Mount	
Dimension	29 mm × 29 mm × 42 mm (1.1" × 1.1" × 1.7")	
Weight	Approx. 68 g (0.15 lb.)	
Ingress protection	IP30 (under proper lens installation and wiring)	
Temperature	Working temperature: 0 °C to 50 °C (32 °F to 122 °F) Storage temperature: -30 °C to 70 °C (-22 °F to 158 °F)	
Humidity	20% to 80% RH, non-condensing	
General		
Client software	MVS or third-party software meeting with GigE Vision Protocol	
Operating system	32/64-bit Windows XP/7/10, 32/64-bit Linux and 64-bit MacOS	
Compatibility	GigE Vision V2.0, GenICam	
Certification	CE, FCC, RoHS, KC	