

GEN*i*CAM



Introduction

CL084-91GM camera adopts CMOS sensor to provide high-quality image, and uses GigE interface to transmit images in real time. It adopts multiple ISP image algorithms and functions, and supports external trigger modes like line trigger, frame trigger, and trigger-width exposure.

Key Feature

- Supports image compression mode, TDI, trigger-width exposure, etc.
- Supports manual adjustment for Gamma correction, PRNUC correction, LUT, black level, etc.
- Adopts bi-directional I/O hardware design.
- Compact design and flexible installation.
- Compatible with GigE Vision V2.0 and GenICam standard.

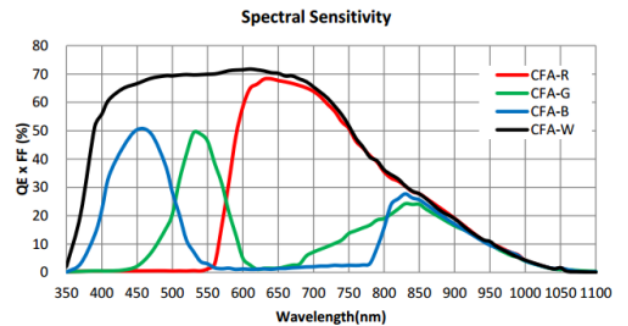
Available Model

CL084-91GM

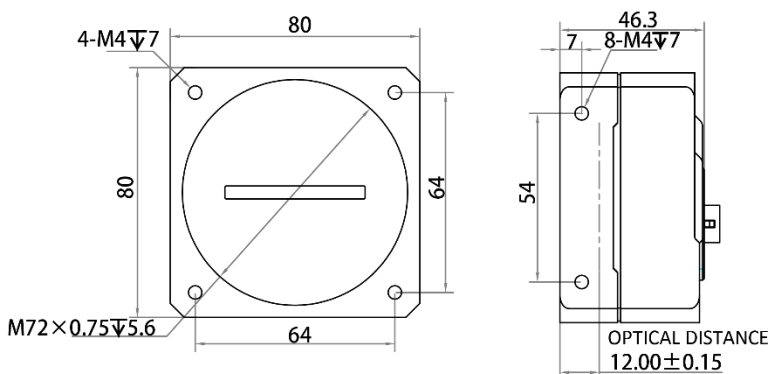
Applicable Industry

Printing, textiles, railway, logistics, metallurgy, food, pharmaceutical manufacturing, material sorting, etc.

Sensor Quantum Efficiency



Dimension



Unit: mm

Specification

Model	HC-CL084-91GM
Camera	
Sensor type	CMOS
Pixel size	5 μ m
Resolution	8192 \times 4
Image mode	Supports 1-line, 2-TDI, 4-TDI
Max. line rate	14 kHz @Mono 8, 7 kHz @Mono 10/12, 9.4 kHz @Mono 10p/12p Image compression mode: 40 kHz @Mono 8, 20 kHz @Mono 10/12
Dynamic range	54.8 dB
SNR	40.3 dB
Gain	Supports 1.2 \times , 2.7 \times , 4.6 \times
Exposure time	3 μ s to 10 ms
Exposure mode	Off/ Once/ Continuous exposure mode, and supports trigger-width exposure
Mono/color	Mono
Pixel format	Mono 8/10/10p/12/12p
Binning	Supports 1 \times 1, 1 \times 2, 1 \times 4, 2 \times 1, 2 \times 2, 2 \times 4, 4 \times 1, 4 \times 2, 4 \times 4
Reverse image	Supports horizontal reverse image output
Trigger mode	External trigger, internal trigger
External trigger mode	Line trigger, frame trigger, line + frame trigger
Electrical feature	
Data interface	Gigabit Ethernet, compatible with Fast Ethernet
Digital I/O	12-pin Hirose connector provides power and I/O: configurable input or output \times 4 (Line 0/1/3/4) and support single-ended/differential
Power supply	12 VDC to 24 VDC
Power consumption	Typ. 12.4 W@12 VDC
Mechanical	
Lens mount	M72 *0.75, optical back focal length: 12 mm (0.5")
Dimension	80 mm \times 80 mm \times 46.3 mm (3.1" \times 3.1" \times 1.8")
Weight	Approx. 465 g (1.0 lb.)
Ingress protection	IP40 (under proper lens installation and wiring)
Temperature	Working temperature: -20 $^{\circ}$ C to 55 $^{\circ}$ C (-4 $^{\circ}$ F to 131 $^{\circ}$ F) Storage temperature: -30 $^{\circ}$ C to 80 $^{\circ}$ C (-22 $^{\circ}$ F to 176 $^{\circ}$ F)
Humidity	5% to 90% RH, non-condensing
General	
Client software	MVS or the third-party software meeting with GigE Vision protocol
Operating system	32/64-bit Windows XP/7/10, 32/64-bit Linux, and 64-bit MacOS
Compatibility	GigE Vision V2.0, GenICam
Certification	CE, FCC, RoHS, KC