

JEET JX SERIES

JEET JX Motor-driven 3D Measurement Videoscope



Convenient Practical Instrument for DNT in Aerospace



SHENZHEN JEET TECHNOLOGY CO., LTD.

The super image processing system can restore the real image effect. The product is durable and suitable for a variety of application scenarios.

Meet the Requirements of Various Detection Environments and has Wide Application Scenarios

Intelligent touch screen to restore real image effect

- 7-inch intelligent touch screen, sensitive touch and accurate operation
- The screen brightness can be adjusted and the image can be clearly seen
- Ultra clear image quality and highly restore the real effect of the image
- Parametric adjustment of image effect to grasp the defect situation at any time

Rugged and suitable for different scenes

- 4-layer wear-resistant tungsten wire tube, the wear resistance is 20 times than the ordinary tube
- The probe, objective lens and tube system shall be IP67 waterproof
- The shell is made of engineering alloy and aviation aluminum alloy, which is firm and durable
- The products have undergone strict high and low temperature, drop, vibration and other tests

Intelligent File Management, Providing Professional Test Reports

MDI report generation and intelligent file management functions provide users with professional detection reports.



MDI report function, generate test report

- Select the photo and give a text description of the defect below the picture
- Graffiti notes can directly circle defects and cracks on the drawing
- Watermark annotation, and you can customize "qualified, crack" and other marks
- Generate report, which can be saved in USB flash disk, internal storage or transferred to mobile device via Bluetooth

Intelligent and convenient file management

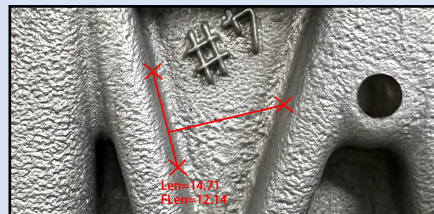
- The file name can be preset or renamed
- New folders can be created to quickly find files
- Support picture/video preview and graffiti annotation pictures
- Pictures, videos and test reports can be deleted or exported with one click

3D Cloud Scanning Modeling and Rapid Measurement

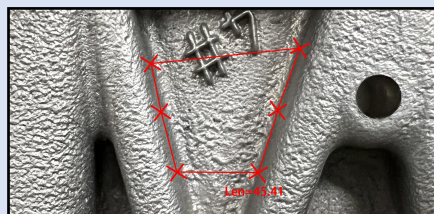


3D measurement, measurement accuracy $\geq 95\%$

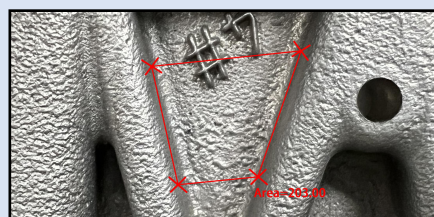
- Point to point, point to line, polyline, area, depth and other measurement methods
- Measurement accuracy $\geq 95\%$
Standard accuracy: 0.1mm
Minimum accuracy: 0.01mm
- Fine tuning navigation keys and window assistance, fine tuning point selection, confidence assisted point selection and accurate measurement
- Shoot and measure immediately, and the measured image supports repeated measurement



Point to line distance



Measuring perimeter



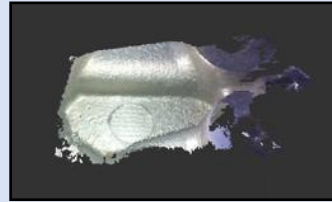
Measurement area



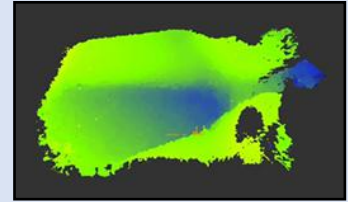
Confidence assisted point selection

High precision and fast global scanning 3D cloud image

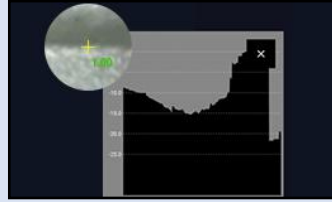
- Fast global scanning to view 3D physical cloud image
- Vertical depth cloud map, automatic measurement of maximum depth
- 3D cloud image XYZ coordinate display, arbitrary section view, easy to locate the depth and height difference of internal defects
- the datum plane shifts and the depth value changes in real time



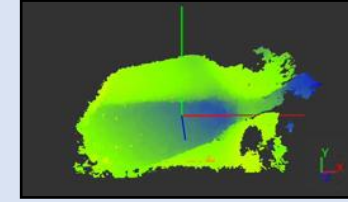
3D physical cloud image



Vertical depth nephogram



Profile

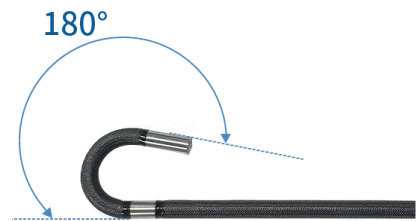


Cloud 3D coordinates

Accurate Articulation with Joystick, Super Compatible Tube



360°All-way accurate articulation



Maximum Bending Angle $\geq 180^\circ$

360°All-way accurate articulation with joystick.
The maximum bending angle $\geq 180^\circ$.
Damping type positioning design and precise probe locking technology makes the detection more accurate and efficient.

Illuminance

With super bright LED ceramic light source or optical fiber lighting, the illuminance can reach to 1,000,000 Lx.



Photo / video

Gun type one click to take photos and video, make the operation convenient and fast



Rotation speed

One click control, fast/slow electric rotation, automatic reset

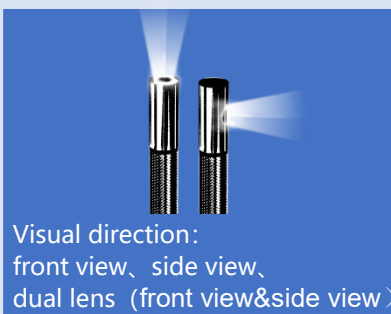


Probe positioning

One click lock probe, fine adjustment, precise positioning



- Modular design, and the host system, tube system and power supply system can be disassembled and separated.
- Independently replace the 1.0mm~8.0mm tube system to meet the needs of different working conditions.



Visual direction:
front view, side view,
dual lens (front view & side view)





Craftsmanship, Military Quality

We have obtained more than 10 invention patents and software copyrights, passed ISO9001/14001 system certification. JEET's product got CE, RoHS certificates, certificate from the Ministry of Public Security Testing Center and QC inspection report from Ceprei, Credit Rating Certification, GJB9001 National Military Standard System Certification, Explosion Proof Certification, etc.

Battery Module

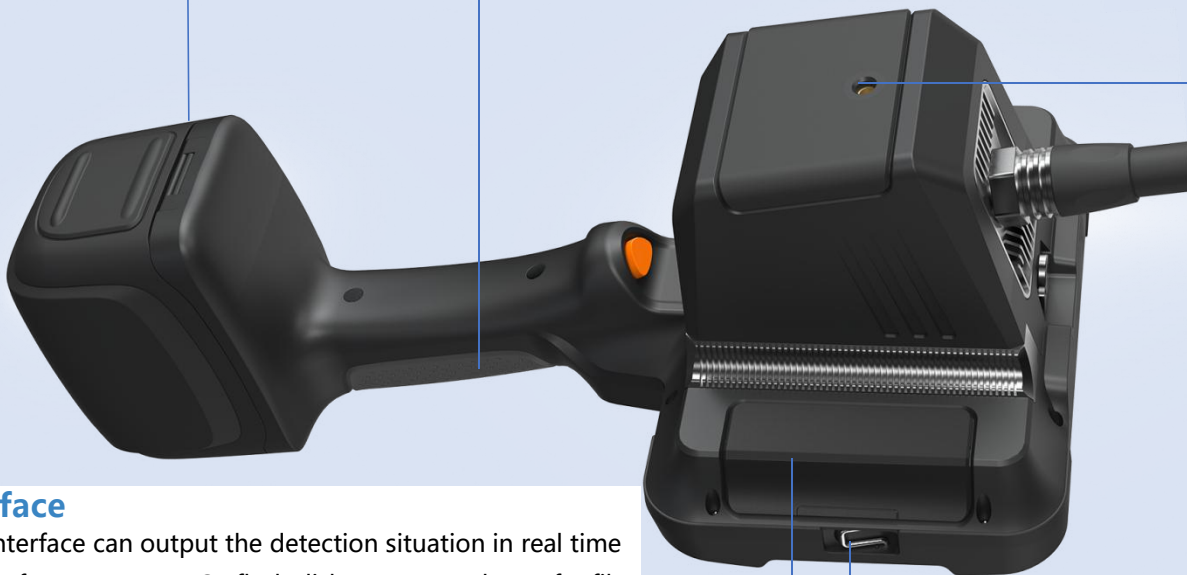
Working Time $\geq 4h$, support charging while use.
Replaceable monitor makes the operation simple and convenient.

Ergonomic Design

The anti falling and anti-skid design of the whole machine makes the operation more comfortable.

Easy and portable

Equipped with shoulder straps and reserved universal support interface, it is convenient to operate in complex environment.



Interface

- HDMI interface can output the detection situation in real time
- USB interface supports USB flash disk to store and transfer files
- SD card slot, with a maximum capacity of 128G



WiFi wireless image transmission

- WiFi wireless connection, and the mobile device synchronously displays the detection image
- Take photos / videos remotely through app and save test pictures
- Error reporting notes



Probe temperature measurement

- Real time display of detected ambient temperature
- High temperature alarm function, power off when overheating

Parameter

主机系统			
Structure	Hand-held integrated design	Standard Accuracy	0.1mm
Display	7 inch touch screen, humanized Interface keys	Minimum Accuracy	0.01mm
Outer Case Materia	Engineering alloy material and aviation aluminum alloy	Measurement Accuracy	≥95%
Tube Material	tungsten-braided	Rotation Mode	360°All-way accurate articulation with joystick
Display Resolution	1920*1200	Probe Positioning	Fine adjustment, precise positioning
Light Source	Optical fiber/LED	Tube Length	1.5m/2m/3m (other lengths can be customized)
Bending Angle	180°	Working Time	4h, support charging while use
FOV	90°/120°	Battery Capacity	7.4V/6400mAH
Video Output	HDMI same screen output	Storage Medium	Memory storage, SD card, USB flash disk (optional)
Waterproof and Dustproof Grade	The probe, objective lens and tube can withstand IP67 waterproof	Weight	≈ 2.3 kg (battery included)
Monitor System	Real time intelligent multitasking operation	Compatibility	Compatible with different tube systems
Data Port	HDMI port、USB port、type-c port、SD card port、3.0earphone port		
Standard Configuration	Special instrument box、videoscope、battery module、charger、card reader、memory card、data cable、operation manual、certificate etc.		

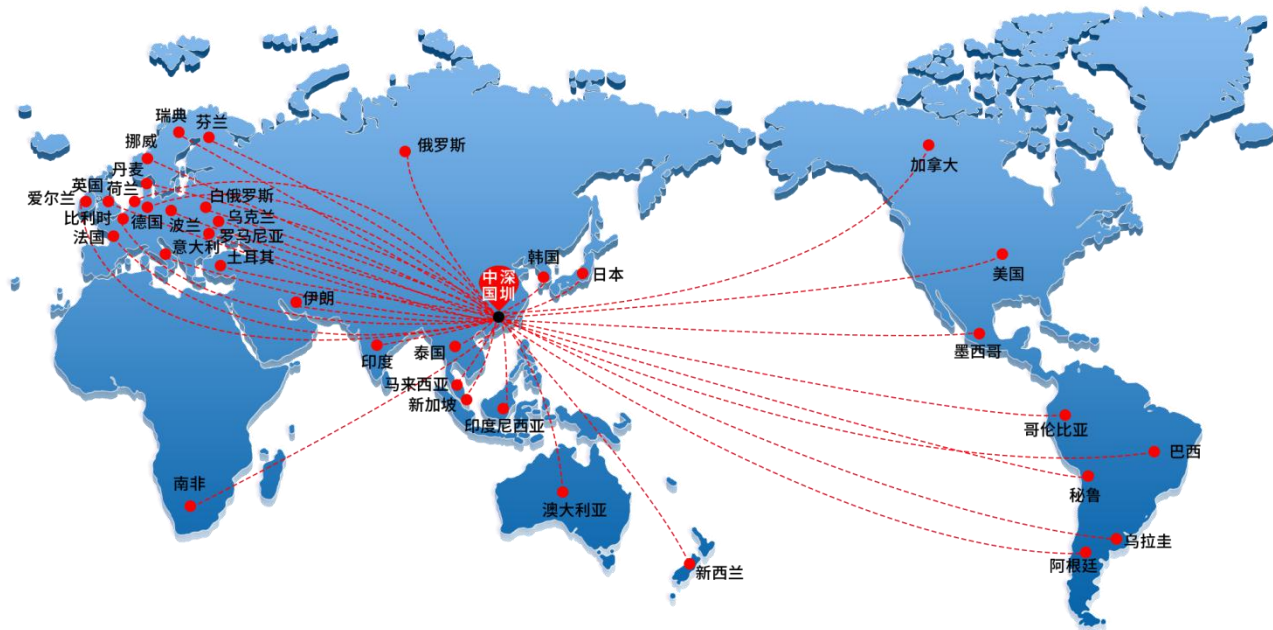
管线系统							
Probe Diameter (mm)	Camera Pixels	Tube Length	View	DOF	FOV	Bright Sours	Bending Way
8.0mm/ 6.0mm	1megapixel	Below 1m~10m	front	10-100mm/20-120mm	120°	LED/fiber	360°all-way
			side	3-25mm/10-110mm	90°/120°	LED	360°all-way
	1megapixel	Below 1m~10m	dual lends	front 10-100mm	front 120°	LED	360°all-way
				Side 3-25mm/10-110mm	side 90°/120°		360°all-way
3.8mm	300000pixel	Below 1m~10m	front	10-100mm/20-120mm	120°	LED/fiber	360°all-way
			side	3-25mm	90°	LED	360°all-way
	300000pixel	Below 1m~5m	dual	front 5-50mm	front 120°	LED	360°all-way
				side 5-50mm	side 120°		360°all-way
2.8mm	300000pixel	Below 1m~5m	front	5-50mm	120°	LED/fiber	360°all-way
			side	5-50mm	120°	LED	360°all-way
2.2mm	300000pixel	Below 1m~3m	dual lends	5-50mm	120°	LED/fiber	360°,two-way
1.8mm	00000pixel	Below 1m~3m	front	5-50mm	120°	LED/fiber	two-way
1.0mm	4000pixel	Below 1m~3m	front	5-50mm	120°	LED/fiber	no direction

Product Function Selection					
Function	JXS	JXP	Function	JXS	JXP
Image format: jpg	√	√	Wireless image transmission: wirelessly transmit images to mobile phones, computers and other terminals	√	√
Video format: MP4	√	√	Probe temperature display: probe temperature display and high temperature alarm (optional)	√	√
Rotation: fast/slow electric rotation, automatic reset	√	√	Delayed exposure function	√	√
Probe Lock: step fine adjustment, precise positioning	√	√	Vector diagram coordinates: the vector indication diagram of guiding orientation and curvature is displayed on the screen	√	√
Lighting: light continuous automatic adjustment and 5-gear manual adjustment	√	√	Intelligent file management: support copying, renaming, deleting and generating reports of files in internal storage, SD card and USB storage media	√	√
Zoom in/out: 8X	√	√			
Image display scale: image 1:1 / full screen	√	√			
Image resolution: 1920 x1080/1280 x 720/640 x 480	√	√	Language : English / French / German / Japanese / Traditional	√	√

Image adjustment: brightness, contrast, gamma, chroma, saturation, sharpness	√	√	Chinese /Simplified Chinese / Korean / Italian		
Image Effects: negative、black-and-white film	√	√	MDI report generation software: select the picture, graffiti it, edit the text description under the picture, create the test report and Bluetooth transmission test report	√	√
White balance: automatic white balance	√	√			
Image freeze: Freeze the view and call the brush to save the graffiti in real time	√	√	3D measurement: point to point, point to line, point to surface measurement of depth, area, perimeter, etc. fine tune the navigation key and window assistance, confidence assistance to select points, and the measured image can be measured repeatedly	×	√
Image mirroring and rotation: 0°、90°、180°、270°	√	√			
Graffiti notes: text notes, graffiti, watermark	√	√			
Dual camera preview: dual camera dynamic display on the same screen	√	√	Cloud image: vertical depth cloud image, 3D physical cloud image, local section, arbitrary section, XYZ coordinate display of cloud image, automatic measurement of maximum depth, view of section view, datum translation and real-time display of depth dimension	×	√
Picture in picture: the main screen image and small window photo can be switched arbitrarily	√	√			
Front/side on the same screen: front-view /side-view are displayed on the same screen	√	×			

Sold all over the world

Our products are widely used in many fields, such as aerospace, military manufacturing, automobile manufacturing, energy and power, precision casting, police safety, special inspection institute, food and chemical industry, pharmaceutical machinery, construction industry, automobile maintenance and so on.



Distributor:

JEET
杰泰科技
<http://www.jeetech.com>

深圳杰泰科技有限公司
SHENZHEN JEET TECHNOLOGY CO.,LTD.

Tel : +86 -755-84863736 E-mail : sales@jeetech.cn

生产制造商：深圳杰泰科技有限公司

厂家地址：深圳市龙岗区宝龙街道宝荷大道76号智慧家园一期1栋B座9楼

9/F, Unit B, Block 1, Smart Park, No. 76 Baohe Avenue, Baolong St., Longgang Dist., Shenzhen, China