



CHINA OEM ODM DEHUMIDIFIER MANUFACTURER



# **CATALOGUE**

Hangzhou Dahuan Technology Co.,Ltd.

Hangzhou - China

[Eastdehumidifier.com](http://Eastdehumidifier.com)

## OUR COMPNAY

Humidity issue becomes the most import factor to effect production, storaction and planting in the industry.EAST dehumidifier is offering complete humidity control solutions for most of the application like workshop, warehouse, greenhouse. No matter how is the area constructure, humidity requirement or usage, you can find the right solutions or right dehumidifiers to optimize your environment. Get start to customize your solution of humidity issue. East Dehumidifier are involved in the categories of dehumidification equipment of Grom Room Dehumidifier, Commercial Portable Dehumidifier, Industrial Dehumidifier, Air ConditionningDehumidifier, Desiccant dehumidifeir etc. With the experience of working for different applications, we can customize equipment with optional functions,appearance,structure for different requirement.

East Dehumidifier have been concertrating in OEM ODM service for our global partners. In the past 12 years, East has established closed relationship with branding business in the world.Different type of business are welcomed to cooperate, Manufacturer,E-commerce, Distributor, Wholesaler, Retailer and End Users.

EAST Dehumidifier is one of the prime dehumidifier manufacturer in China, our aim is to be the production base of global dehumidifier branding business . We are going to help people to establish own distribute system and create private branding line of dehumidifier equipment with our full support of technology, manufaturing, solutions, after-sale and spare parts. The purpose is to build independent groups by close relationship between you and EAST Dehumidifier to sale quality dehumidifier to region market . Let's get start to work together.

## TO BE THE PRODUCTION BASE OF GLOBAL DEHUMIDIFIER BRANDING BUSINESS





# Facilities



- Strong OEM & ODM Service
- Trust-worthy Design and Development
- Experienced sales make the shipping smoothly
- Certified manufacturer
- Visual order statement
- Safety third-party inspection service

DEHUMIDIFIER



HUMIDIFIER



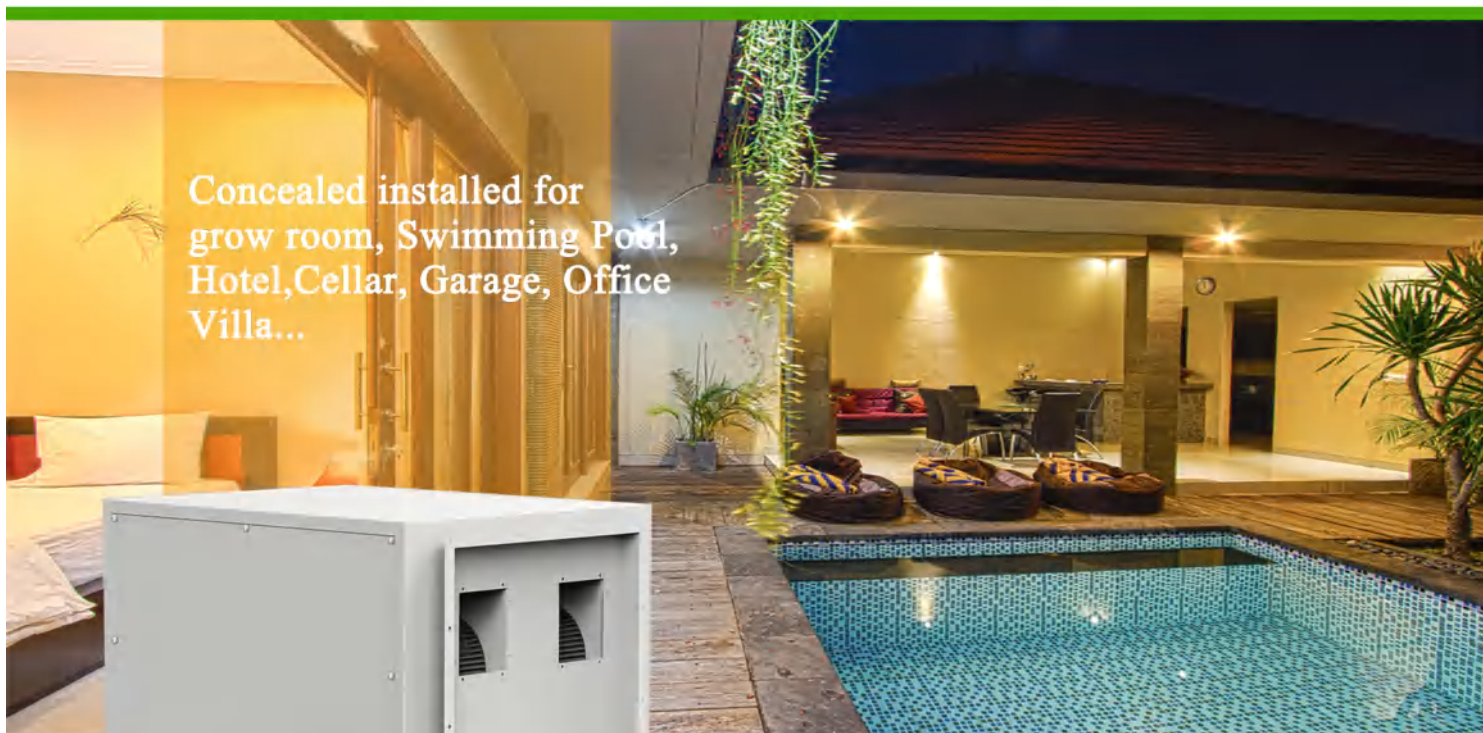
# DEHUMIDIFIERS





# Product Categories

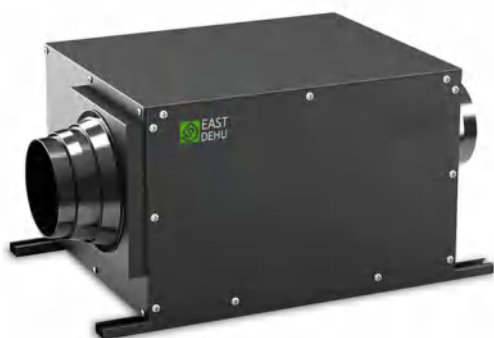
■ Grow Room Dehumidifier



Concealed installed for  
grow room, Swimming Pool,  
Hotel, Cellar, Garage, Office  
Villa...

## SDD-26L/58L Ceiling Mounted Dehumidifier

- Framed machine body construction
- Micro-computer control, LCD digital display
- Humidity control accuracy to  $\pm 1\%$ , set freely
- Double sound insulation, silence running design
- Timed on/off setting



Model no.	SDD-26L	SDD-58L
Cooling Capacity	4,500 BTU	7,000 BTU
Water Removal Capacity @30°C, RH80%, 24hrs	26 Liters	58 Liters
Supply Voltage	208~240V	208~240V
Rated Power	0.18 Kw	0.8 Kw
Rated Amps	2.5 A	3.2 A
Air Volume @ 0.0" ,CFM	150	320
Static Pressure	40~60 Pa	40~60 Pa
Working Temperature	5°C~38°C	5°C~38°C
Humidity Range (RH)	40%~95%	40%~95%
Net Dimensions	27" x 12.2" x 8.3"	32.6" x 19.3" x 14.6"
Packed Dimensions	31" x 16.3" x 9"	36.6" x 23.4" x 20.5"
Net Weight	35 Lbs	78 Lbs
Gross Weight	48 Lbs	95 Lbs
Air Inlet Flange Size	Φ 6"	Φ 6"
Air Outlet Flange Size	Φ 4"	Φ 6"
Noise	≤45dB	≤45dB
Applying Area	100~300 Sqft	300~700 Sqft

## SDD-90L/138L Ceiling Mounted Dehumidifier

- Framed machine body construction
- Micro-computer control, LCD digital display
- Humidity control accuracy to  $\pm 1\%$ , set freely
- Double sound insulation, silence running design
- Timed on/off setting



Model no.	SDD-90L	SDD-138L
Cooling Capacity	9,000 BTU	9,000 BTU
Water Removal Capacity @30°C, RH80%, 24hrs	90 Liters	138 Liters
Supply Voltage	208~240V	208~240V
Rated Power	1.0 Kw	1.2 Kw
Rated Amps	3.8 A	3.8A
Air Volume @ 0.0" ,CFM	590	765
Static Pressure	50~80 Pa	50~80 Pa
Working Temperature	5°C~38°C	41°F~100°F
Humidity Range (RH)	40%~95%	40%~95%
Net Dimensions	35.4" x 25.2" x 18.5"	35.4" x 25.2" x 18.5"
Packed Dimesions	40.6" x 27.6" x 25"	40.6" x 27.6" x 25"
Net Weight	108 Lbs	118 Lbs
Gross Weight	132 Lbs	143 Lbs
Air Inlet Flange Size	11.8" x 15.8"	11.8" x 15.8"
Air Outlet Flange Size	8.9" x 7.5"	8.9" x 7.5"
Noise	≤60dB	≤60dB
Applying Area	700~1200 Sqft	1300~1500 Sqft

## SDD-168L Ceiling Mounted Dehumidifier

- Framed machine body construction
- Micro-computer control, LCD digital display
- Humidity control accuracy to  $\pm 1\%$ , set freely
- Double sound insulation, silence running design
- Timed on/off setting



Model no.	SDD-168L
Cooling Capacity	28,000 BTU
Water Removal Capacity @30°C, RH80%, 24hrs	168 Liters
Supply Voltage	208~240V
Rated Power	2.8 Kw
Rated Amps	12.5 A
Air Volume @ 0.0" ,CFM	1,060
Static Pressure	50~80 Pa
Working Temperature	41°F~100°F
Humidity Range (RH)	40%~95%
Net Dimensions	41.3" x 27.5" x 27.5"
Packed Dimesions	45.3" x 31.5" x 33.5"
Net Weight	220 Lbs
Gross Weight	265 Lbs
Air Inlet Flange Size	21.3" x 16.9"
Air Outlet Flange Size	21.3" x 16.9"
Noise	≤65dB
Applying Area	1200~2500 Sqft

## SDD-240L Ceiling Mounted Dehumidifier

- Framed machine body construction
- Micro-computer control, LCD digital display
- Humidity control accuracy to  $\pm 1\%$ , set freely
- Double sound insulation, silence running design
- Timed on/off setting



Model no.	SDD-240L
Cooling Capacity	28,000 BTU
Water Removal Capacity @30°C, RH80%, 24hrs	240 Liters
Supply Voltage	208~240V
Rated Power	3.5 Kw
Rated Amps	16 A
Air Volume @ 0.0" ,CFM	1,640
Static Pressure	50~80 Pa
Working Temperature	41°F~100°F
Humidity Range (RH)	40%~95%
Net Dimensions	43.3" x 35.4" x 27.6"
Packed Dimesions	46.9" x 33.9" x 39"
Net Weight	278 Lbs
Gross Weight	330 Lbs
Air Inlet Flange Size	21.8" x 23.8"
Air Outlet Flange Size	21.8" x 23.8"
Noise	≤65dB
Applying Area	2000~3500 Sqft

## SDD-360L/480L Ceiling Mounted Dehumidifier

- Ceiling mounted without taking floor space, ultrathinly design
- Micro-computer control, LCD digital display
- Humidity control accuracy to  $\pm 1\%$ , set freely
- Double sound insulation, silence running design
- Timed on/off setting



Model no.	SDD-360L	SDD-480L
Cooling Capacity	56,000 BTU	56,000 BTU
Water Removal Capacity @30°C, RH80%, 24hrs	360 Liters	480 Liters
Supply Voltage	380/480V	380/480V
Rated Power	6.5 Kw	6.7 Kw
Rated Amps	9 A	11 A
Air Volume @ 0.0" ,CFM	2,350	3,300
Static Pressure	100~150 Pa	100~150 Pa
Working Temperature	41°F~100°F	41°F~100°F
Humidity Range (RH)	40%~95%	40%~95%
Net Dimensions	43.3" x 50.4" x 27.4"	43.3" x 50.4" x 27.4"
Packed Dimesions	47.3" x 54.3" x 33.5"	47.3" x 54.3" x 33.5"
Net Weight	462 Lbs	496 Lbs
Gross Weight	507 Lbs	550 Lbs
Air Inlet Flange Size	39.5" x 20.6"	39.5" x 20.6"
Air Outlet Flange Size	39.5" x 20.6"	39.5" x 20.6"
Noise	≤70dB	≤70dB
Applying Area	3000~5000 Sqft	5000~8000 Sqft



## SDD-720L Ceiling Mounted Dehumidifier



- Ceiling mounted without taking floor space, ultrathinly design
- Micro-computer control, LCD digital display
- Humidity control accuracy to  $\pm 1\%$ , set freely
- Double sound insulation, silence running design
- Timed on/off setting

Model no.	SDD-720L
Cooling Capacity	80,000 BTU
Water Removal Capacity @30°C, RH80%, 24hrs	720 Liters
Supply Voltage	380/480V
Rated Power	9.5 Kw
Rated Amps	26 A
Air Volume @ 0.0" ,CFM	4,700
Static Pressure	100~150 Pa
Working Temperature	41°F~100°F
Humidity Range (RH)	40%~95%
Net Dimensions	59" x 59.5" x 31.5"
Packed Dimesions	63" x 63.5" x 39.5"
Net Weight	728 Lbs
Gross Weight	795 Lbs
Air Inlet Flange Size	48.6" x 25.8"
Air Outlet Flange Size	43.5" x 25.8"
Noise	≤70dB
Applying Area	8000~10000 Sqft

## SDD-960L Ceiling Mounted Dehumidifier



- Ceiling mounted without taking floor space, ultrathinly design
- Micro-computer control, LCD digital display
- Humidity control accuracy to  $\pm 1\%$ , set freely
- Double sound insulation, silence running design
- Timed on/off setting

Model no.	SDD-960L
Cooling Capacity	110,000 BTU
Water Removal Capacity @30°C, RH80%, 24hrs	960 Liters
Supply Voltage	380/480V
Rated Power	13 Kw
Rated Amps	30 A
Air Volume @ 0.0" ,CFM	6,470
Static Pressure	100~150 Pa
Working Temperature	41°F~100°F
Humidity Range (RH)	40%~95%
Net Dimensions	59" x 59.5" x 31.5"
Packed Dimesions	63" x 63.5" x 39.5"
Net Weight	826 Lbs
Gross Weight	892 Lbs
Air Inlet Flange Size	48.6" x 25.8"
Air Outlet Flange Size	43.5" x 25.8"
Noise	≤70dB
Applying Area	10,000~13,000 Sqft



# Product Categories

■ Portable Dehumidifier



Portable dehumidifier for Home, Office, Basement, Warehouse, Commercial, Storage...



## SDP-38L/58L Portable Dehumidifier

- Micro-computer control LCD display
- Controlled by low voltage, more safe
- Automatic shut down when tank is full
- Humidity set freely, easy to use
- Moving by universal wheels, portable

Model no.	SDP-38L	SDP-58L
Cooling Capacity	7,200 BTU	7,200 BTU
Water Removal Capacity @30°C, RH80%, 24hrs	38 Liters	58 Liters
Supply Voltage	208~240V	208~240V
Rated Power	0.55 Kw	0.65 Kw
Rated Amps	2.5 A	3.0 A
Air Volume @ 0.0" ,CFM	295	295
Static Pressure	20~40 Pa	20~40 Pa
Working Temperature	5°C~38°C	5°C~38°C
Humidity Range (RH)	40%~95%	40%~95%
Net Dimensions	18.4" x17.9" x 25.7"	18.4" x17.9" x 25.7"
Packed Dimesions	22.5" x21.9" x 33.7"	22.5" x21.9" x 33.7"
Net Weight	72 Lbs	82 Lbs
Gross Weight	95 Lbs	105 Lbs
Noise	≤45dB	≤45dB
Applying Area	200~300 Sqft	300~400 Sqft

## SDP-90A/138A/150A Portable Dehumidifier



- Micro-computer control LCD display
- Controlled by low voltage, more safe
- Continuous drian & pump optional
- Humidity set freely, easy to use
- Moving by universal wheels, portable

Model no.	SDP-90A	SDP-138A	SDP-150A
Cooling Capacity	9,000 BTU	10,800 BTU	10,800 BTU
Water Removal Capacity @30°C, RH80%, 24hrs	90 Liters	138 Liters	150 Liters
Supply Voltage	208~240V	208~240V	208~240V
Rated Power	1.075 Kw	1.215 Kw	1.495 Kw
Rated Amps	4.8 A	5.7 A	6.9 A
Air Volume @ 0.0" ,CFM	588	765	880
Static Pressure	50~80 Pa	50~80 Pa	50~80 Pa
Working Temperature	5°C~38°C	5°C~38°C	5°C~38°C
Humidity Range (RH)	40%~95%	40%~95%	40%~95%
Net Dimensions	17.9" x 14.2" x 33"	21.3" x 17.3" x 38.8"	21.3" x 17.3" x 38.8"
Packed Dimesions	21.9" x 18.2" x 41"	25.3" x 21.3" x 46.8"	25.3" x 21.3" x 46.8"
Net Weight	92 Lbs	112 Lbs	138 Lbs
Gross Weight	114 Lbs	136 Lbs	160 Lbs
Noise	≤55dB	≤55dB	≤55dB
Applying Area	600~1000 Sqft	800~1300 Sqft	1000~2000 Sqft



## SDP-138B/150B Portable Dehumidifier

- Micro-computer control LCD display
- Controlled by low voltage, more safe
- Continuous drian & pump optional
- Humidity set freely, easy to use
- Moving by universal wheels, portable

Model no.	SDP-138B	SDP-150B
Cooling Capacity	10,800 BTU	10,800 BTU
Water Removal Capacity @30°C, RH80%, 24hrs	138 Liters	150 Liters
Supply Voltage	208~240V	208~240V
Rated Power	1.215 Kw	1.495 Kw
Rated Amps	5.7 A	6.9 A
Air Volume @ 0.0" ,CFM	765	880
Static Pressure	50~80 Pa	50~80 Pa
Working Temperature	5°C~38°C	5°C~38°C
Humidity Range (RH)	40%~95%	40%~95%
Net Dimensions	22" x21.7" x 33"	22" x21.7" x 33"
Packed Dimesions	26" x25.7" x 41"	26" x25.7" x 41"
Net Weight	110 Lbs	110 Lbs
Gross Weight	138 Lbs	138 Lbs
Noise	≤55dB	≤55dB
Applying Area	800~1300 Sqft	1000~2000 Sqft

## SDP-90C/138C/150C Portable Dehumidifier



- Micro-computer control LCD display
- Controlled by low voltage, more safe
- Continuous drian & pump optional
- Humidity set freely, easy to use
- Moving by universal wheels, portable

Model no.	SDP-90C	SDP-138C	SDP-150C
Cooling Capacity	9,000 BTU	10,800 BTU	10,800 BTU
Water Removal Capacity @30°C, RH80%, 24hrs	90 Liters	138 Liters	150 Liters
Supply Voltage	208~240V	208~240V	208~240V
Rated Power	1.075 Kw	1.215 Kw	1.495 Kw
Rated Amps	4.8 A	5.7 A	6.9 A
Air Volume @ 0.0" ,CFM	588	765	880
Static Pressure	50~80 Pa	50~80 Pa	50~80 Pa
Working Temperature	5°C~38°C	5°C~38°C	5°C~38°C
Humidity Range (RH)	40%~95%	40%~95%	40%~95%
Net Dimensions	22" x 17.7" x 33"	27.2" x 20.9" x 38.8"	27.2" x 20.9" x 38.8"
Packed Dimesions	26" x 23.7" x 39"	31.2" x 24.9" x 45.7"	31.2" x 24.9" x 45.7"
Net Weight	105 Lbs	121 Lbs	156 Lbs
Gross Weight	132 Lbs	148 Lbs	189 Lbs
Noise	≤55dB	≤55dB	≤55dB
Applying Area	600~1000 Sqft	800~1300 Sqft	1000~2000 Sqft

EAST DEHUMIDIFIER  
CLOSE TO NATURAL



# Product Categories



## Industrial Dehumidifier



### SDI-168L Industrial Dehumidifier

- Humidity control set freely, accuracy to  $\pm 1\%$
- World brand compressor, 3 minutes delay protection
- Continuously drainage by external soft tube
- Automatic defrosting
- High efficiency, energy saving

Model no.	SDI-168L
Cooling Capacity	28,000 BTU
Water Removal Capacity @30°C, RH80%, 24hrs	168 Liters
Supply Voltage	400V/50Hz
Rated Power	2,820 W
Rated Amps	5.5 A
Air Volume @ 0.0" ,CFM	1000
Working Temperature	41°F~100°F
Humidity Range (RH)	40%~95%
Net Dimensions	23.4" x 16" x 63.2"
Packed Dimensions	26.6" x 19.2" x 71"
Net Weight	198 Lbs
Gross Weight	230 Lbs
Noise	≤ 60 dB
Applying Area	1,200~2,200 Sqft

## SDI-210L/240L Industrial Dehumidifier



- Humidity control set freely, accuracy to  $\pm 1\%$
- World brand compressor, 3 minutes delay protection
- Continuously drainage by external soft tube
- Automatic defrosting
- High efficiency, energy saving

Model no.	SDI-210L	SDI-240L
Cooling Capacity	28,000 BTU	28,000 BTU
Water Removal Capacity @30°C, RH80%, 24hrs	210 Liters	240 Liters
Supply Voltage	400V/50Hz	400V/50Hz
Rated Power	3,200 W	3,500 W
Rated Amps	8.5 A	8.5 A
Air Volume @ 0.0" ,CFM	1400	1,580
Working Temperature	41°F~100°F	41°F~100°F
Humidity Range (RH)	40%~95%	40%~95%
Net Dimensions	30.3" x 18.3" x 67.2"	30.3" x 18.3" x 67.2"
Packed Dimesions	33.5" x 21.5" x 75"	33.5" x 21.5" x 75"
Net Weight	238 Lbs	254 Lbs
Gross Weight	270 Lbs	286 Lbs
Noise	≤ 65 dB	≤ 65 dB
Applying Area	1,800~3,000 Sqft	2,000~3,500 Sqft

## SDI-360L/480L Portable Dehumidifier



- Humidity control set freely, accuracy to  $\pm 1\%$
- World brand compressor, 3 minutes delay protection
- Continuously drainage by external soft tube
- Automatic defrosting
- High efficiency, energy saving

Model no.	SDI-360L	SDI-480L
Cooling Capacity	56,000 BTU	56,000 BTU
Water Removal Capacity @30°C, RH80%, 24hrs	360 Liters	480 Liters
Supply Voltage	400V/50Hz	400V/50Hz
Rated Power	6,500 W	6,700 W
Rated Amps	9.0 A	11.0 A
Air Volume @ 0.0" ,CFM	2,350	3,300
Working Temperature	41°F~100°F	41°F~100°F
Humidity Range (RH)	40%~95%	40%~95%
Net Dimensions	47" x 19.7" x 68.7"	47" x 19.7" x 68.7"
Packed Dimesions	50.2" x 22.9" x 76.5"	50.2" x 22.9" x 76.5"
Net Weight	408 Lbs	430 Lbs
Gross Weight	452 Lbs	474 Lbs
Noise	≤ 70 dB	≤ 70 dB
Applying Area	3,000~5,500 Sqft	4,500~7,000 Sqft



### SDI-720L/840L Industrial Dehumidifier

- Humidity control set freely, accuracy to  $\pm 1\%$
- World brand compressor, 3 minutes delay protection
- Continuously drainage by external soft tube
- Automatic defrosting
- High efficiency, energy saving

Model no.	SDI-720L	SDI-840L
Cooling Capacity	88,000 BTU	100,000 BTU
Water Removal Capacity @30°C, RH80%, 24hrs	720 Liters	840 Liters
Supply Voltage	400V/50Hz	400V/50Hz
Rated Power	9,500 W	12,000 W
Rated Amps	26.0 A	30.0 A
Air Volume @ 0.0" ,CFM	4,700	6,470
Working Temperature	41°F~100°F	41°F~100°F
Humidity Range (RH)	40%~95%	40%~95%
Net Dimensions	54.6" x 28.3" x 75"	54.6" x 28.3" x 75"
Packed Dimesions	57.8" x 31.5" x 82.8"	57.8" x 31.5" x 82.8"
Net Weight	695 Lbs	695 Lbs
Gross Weight	750 Lbs	750 Lbs
Noise	≤ 75 dB	≤ 75 dB
Applying Area	6,000~10,000 Sqft	7,000~13,000 Sqft



### SDI-960L/1200L Portable Dehumidifier

- Humidity control set freely, accuracy to  $\pm 1\%$
- World brand compressor, 3 minutes delay protection
- Continuously drainage by external soft tube
- Automatic defrosting
- High efficiency, energy saving

Model no.	SDI-960L	SDI-1200L
Cooling Capacity	110,000 BTU	160,000 BTU
Water Removal Capacity @30°C, RH80%, 24hrs	960 Liters	1200 Liters
Supply Voltage	400V/50Hz	400V/50Hz
Rated Power	13,000 W	17,000 W
Rated Amps	35.0 A	40.0 A
Air Volume @ 0.0" ,CFM	6,470	7,640
Working Temperature	41°F~100°F	41°F~100°F
Humidity Range (RH)	40%~95%	40%~95%
Net Dimensions	54.6" x 28.3" x 75"	54.6" x 28.3" x 75"
Packed Dimesions	57.8" x 31.5" x 82.8"	57.8" x 31.5" x 82.8"
Net Weight	783 Lbs	838 Lbs
Gross Weight	849 Lbs	904 Lbs
Noise	≤ 75 dB	≤ 75 dB
Applying Area	8,000~13,000 Sqft	15,000~20,000 Sqft



# Product Categories



**Air Conditioning Dehumidifier**



Thermostat dehumidifier for Laboratory, Workshop, Warehouse, Electric room, Library...

## SDAC-168 Air Conditioning Dehumidifier



- All-in-one machine control temperature and humidity
- Ducted connect to room
- Continuously drainage by external soft tube
- Automatic defrosting
- High efficiency, energy saving

Model no.	SDAC-168	
Cooling Capacity	8.2 Kw	
Supply Voltage	380V/50Hz	
Max Removal	7 kg/h	
Cooling Power	2.58 Kw	
Heating Power	6 Kw	
Air Volume	1800 m <sup>3</sup> /h	
Static Pressure	50~80 Pa	
Indoor fan	Type	Low noise outer rotor centrifugal fan
	Power	0.28 Kw
Outdoor fan	Type	Low noise outer rotor axial fan
	Power*qty'	0.18 Kw * 1
Noise		
Indoor unit	Dimen.(cm)	69.5x40x170
Outdoor unit	Dimen.(cm)	74x63.5x79.5
Indoor-outdoor unit connect pipe	Type	Horn Type Connector
	Liquid pipe	Φ9.52
	Air pipe	Φ15.88
Humidity Control Range		RH45%~99%
Temperature Control Range		18℃~35℃

## SDAC-240 Air Conditioning Dehumidifier



- Running by multistage capacity adjustment based on real load capacity
- Various of control way with easy operation by touch screen
- Programmed control according to customer's requirement
- Unique design to separate the refrigerating system and air system
- Can be maintained and repaired when running, low malfunction rate.

Model no.		SDAC-240
Cooling Capacity		11.9 Kw
Supply Voltage		380V/50Hz
Max Removal		10 kg/h
Cooling Power		3.0 Kw
Heating Power		9 Kw
Air Volume		2800 m <sup>3</sup> /h
Static Pressure		50~80 Pa
Indoor fan	Type	Low noise outer rotor centrifugal fan
	Power	0.28 Kw
Outdoor fan	Type	Low noise outer rotor axial fan
	Power*qty'	0.42 Kw * 1
Noise		≤65dB
Indoor unit	Dimen.(cm)	87x47x180
Outdoor unit	Dimen.(cm)	74x74x94.8
Indoor-outdoor unit connect pipe	Type	Horn Type Connector
	Liquid pipe	Φ12.7
	Air pipe	Φ15.88
Humidity Control Range		RH45%~99%
Temperature Control Range		18℃~35℃

## SDAC-360/480 Air Conditioning Dehumidifier



- Running by multistage capacity adjustment based on real load capacity
- Various of control way with easy operation by touch screen
- Programmed control according to customer's requirement
- Unique design to separate the refrigerating system and air system
- Can be maintained and repaired when running, low malfunction rate.

Model no.		SDAC-360	SDAC-480
Cooling Capacity		19.6 Kw	23.8 Kw
Supply Voltage		380V/50Hz	380V/50Hz
Max Removal		15 kg/h	20 kg/h
Cooling Power		6.5 Kw	10.2 Kw
Heating Power		12 Kw	18 Kw
Air Volume		4000 m <sup>3</sup> /h	5000 m <sup>3</sup> /h
Static Pressure		100~150 Pa	100~150 Pa
Indoor fan	Type	Low noise outer rotor centrifugal fan	Low noise outer rotor centrifugal fan
	Power	0.6 Kw	0.8 Kw
Outdoor fan	Type	Low noise outer rotor axial fan	Low noise outer rotor axial fan
	Power*qty'	0.75 Kw * 1	0.55 Kw * 2
Noise		≤65dB	≤65dB
Indoor unit	Dimen.(cm)	125x55x180	155x65x180
Outdoor unit	Dimen.(cm)	135x60x145	135x60x145
Indoor-outdoor unit connect pipe	Type	Horn Type Connector	Horn Type Connector
	Liquid pipe	Φ12.7	Φ12.7 * 2
	Air pipe	Φ19.05	Φ19.05 * 2
Humidity Control Range		RH45%~99%	RH45%~99%
Temperature Control Range		18℃~35℃	18℃~35℃



## SDAC-720/960 Thermostat Dehumidifier



- Running by multistage capacity adjustment based on real load capacity
- Various of control way with easy operation by touch screen
- Programmed control according to customer's requirement
- Unique design to separate the refrigerating system and air system
- Can be maintained and repaired when running, low malfunction rate.

Model no.		SDAC-720	SDAC-960
Cooling Capacity		42 Lw	54 Kw
Supply Voltage		380V/50Hz	380V/50Hz
Max Removal		30 kg/h	40 kg/h
Cooling Power		17.3 Kw	22.5 Kw
Heating Power		21 Kw	21 Kw
Air Volume		8000 m <sup>3</sup> /h	11000 m <sup>3</sup> /h
Static Pressure		180-200 Pa	180-200 Pa
Indoor fan	Type	Low noise outer rotor centrifugal fan	Low noise outer rotor centrifugal fan
	Power	1.3 Kw	1.7 Kw
Outdoor fan	Type	Low noise outer rotor axial fan	Low noise outer rotor axial fan
	Power*qty'	0.45 Kw * 3	1.1 Kw * 2
	Noise	≤70dB	≤75dB
Indoor unit	Dimen.(cm)	190x90x195	190x90x195
Outdoor unit	Dimen.(cm)	235x60x145	200x100x160
Indoor-outdoor unit connect pipe	Type	Horn Type Connector	Horn Type Connector
	Liquid pipe	Φ12.7 x 3	Φ15.88 * 2
	Air pipe	Φ19.05 * 3	Φ25.88 * 2
	Humidity Control Range	RH45%~99%	RH45%~99%
	Temperature Control Range	18℃~35℃	18℃~35℃

EAST DEHUMIDIFIER  
CLOSE TO NATURAL



# Product Categories

Thermostat & Humidistat Unit



Thermostat & Humidistat unit is a auto adjusting device according to temperature and humidity of environment, temperature control accuracy to  $\pm 1^{\circ}\text{C}$ , humidity control accuracy to  $\pm 3\sim 5\%$  RH, it's a perfect machine for the area like electric, laboratory, scientific research and medicine industry etc.

√. Humanization design: It's high-efficiency and energy-saving running by multistage capacity adjustment according to real load capacity.

√. Eco-friendly: Use updating green refrigerant R407c/R134a, it can import freshing air and recycle energy to keep air freshing and natural.

√. Intelligent control: automatic control sysyem integrated by world famous brand eletric components and parts, it can be programmed controlled according to cutomer's requirement. Various of control way with easy operation, single control or one-key control, and has configurable communication interfaces for long-range control.

√. Silence running: the unit use "copeland" high efficiency flexibility scroll compressor and low noise efficient fan, and optimization designed with extensive high heat exchange rate parts by sound deadening processing.



# Product Categories

Thermostat & Humidistat Unit



## Technical Parameters

<b>Model no.</b>		SDTH-168	SDTH-240	SDTH-480	SDTH-720	SDTH-960
<b>Cooling Capacity</b>		8.2 Kw	8.2 Kw	21.5 Kw	51.5 Kw	67.8 Kw
<b>Supply Voltage</b>		380V/50Hz	380V/50Hz	380V/50Hz	380V/50Hz	380V/50Hz
<b>Max Removal</b>		7 kg/h	10 kg/h	20 kg/h	30 kg/h	40 kg/h
<b>Air Volume</b>		1800 m <sup>3</sup> /h	2800 m <sup>3</sup> /h	5600 m <sup>3</sup> /h	8000 m <sup>3</sup> /h	11000 m <sup>3</sup> /h
<b>Static Pressure</b>		50~80 Pa	50~80 Pa	~80 Pa	~120 Pa	~150 Pa
<b>Gross Power</b>		3.04 Kw	3.28 Kw	12 Kw	17.5 Kw	20.7 Kw
<b>Compressor</b>	<b>Power &amp; Quantity</b>	2.58 Kw * 1	2.58 Kw * 1	4.3 Kw * 2	7.1 Kw * 2	8.6 Kw * 2
	<b>Refrigerant</b>	R407c	R407c	R407c	R407c	R407c
<b>Indoor fan</b>	<b>Type</b>	Low noise outer rotor centrifugal fan	Low noise outer rotor centrifugal fan	Low noise outer rotor centrifugal fan	Low noise outer rotor centrifugal fan	Low noise outer rotor centrifugal fan
	<b>Power &amp; Quantity</b>	0.14 Kw * 2	0.14 Kw * 2	0.14 Kw * 4	0.25Kw*2 + 0.32Kw*1	0.32Kw*2+0.45Kw*1
<b>Outdoor fan</b>	<b>Type</b>	Low noise outer rotor axial fan	Low noise outer rotor axial fan	Low noise outer rotor axial fan	Low noise outer rotor axial fan	Low noise outer rotor axial fan
	<b>Power &amp; Quantity</b>	0.18 Kw * 1	0.42 Kw * 1	0.35 Kw * 2	0.65 Kw * 2	0.85 Kw * 2
<b>Noise</b>		≤65dB	≤65dB	≤65dB	≤70dB	≤75dB
<b>Indoor unit</b>	<b>Dimen.(mm)</b>	595 x 405 x 1605	770 x 465 x 1705	1200 x 700 x 1900	1680 x 750 x 1900	1680 x 750 x 1900
<b>Outdoor unit</b>	<b>Dimen.(mm)</b>	740 x 635 x 795	740 x 740 x 948	1426 x 814 x 1050	1892 x 1052 x 1160	1892 x 1052 x 1160
<b>Indoor-outdoor unit connect pipe</b>	<b>Type</b>	Horn Type Connector	Horn Type Connector	Horn Type Connector	Horn Type Connector	Horn Type Connector
	<b>Liquid pipe</b>	Φ9.52	Φ12.7	Φ12 * 2	Φ16 * 2	Φ16 * 2
	<b>Air pipe</b>	Φ15.88	Φ15.88	Φ19 * 2	Φ28 * 2	Φ28 * 2
<b>Humidity Control Range</b>		RH45%~99%	RH45%~99%	RH45%~99%	RH45%~99%	RH45%~99%
<b>Temperature Control Range</b>		18℃~35℃	18℃~35℃	18℃~35℃	18℃~35℃	18℃~35℃



# HUMIDIFIERS





# Product Categories



■ Ultrasonic humidifier



## SDH-10Z/20Z Ultrasonic humidifier

- High frequency oscillation to atomized water
- Oscillatory frequency 1.7 MHz, atomization diameter  $\leq 10\mu\text{m}$
- Automatic control system, humidity set freely from 1% to 100% RH
- Standard water inlet, drainage and overflow, automatic water level control
- Atomization working without mechanical drive, pollution, noise

Model no.	SDH-10Z	SDH-20Z
Humidifying volume	3 kg/h	6 kg/h
Supply voltage	220v-50/60Hz	220v-50/60Hz
Power	300 W	600 W
Fog outlet	1 * 110mm	1 * 110mm
Overall dimensions	540*320*440 mm	540*320*440 mm
Applying area	30-50 m <sup>2</sup>	50-80 m <sup>2</sup>
Humidity range	RH10%-99%	RH10%-99%
Control accuracy	$\pm 3\%$	$\pm 3\%$



### SDH-30Z/40Z Ultrasonic humidifier

- High frequency oscillation to atomized water
- Oscillatory frequency 1.7 MHZ, atomization diameter  $\leq 10\mu\text{m}$
- Automatic control system, humidity set freely from 1% to 100% RH
- Standard water inlet, drainage and overflow, automatic water level control
- Atomization working without mechanical drive, pollution, noise

Model no.	SDH-30Z	SDH-40Z
Humidifying volume	9 kg/h	12 kg/h
Supply voltage	220v-50/60Hz	220v-50/60Hz
Power	900 W	1200 W
Fog outlet	2 * 110mm	2 * 110mm
Overall dimensions	580*420*460 mm	580*420*460 mm
Applying area	80-120 m <sup>2</sup>	120-150 m <sup>2</sup>
Humidity range	RH10%-99%	RH10%-99%
Control accuracy	$\pm 3\%$	$\pm 3\%$



### SDH-50Z/60Z Ultrasonic humidifier

- High frequency oscillation to atomized water
- Oscillatory frequency 1.7 MHZ, atomization diameter  $\leq 10\mu\text{m}$
- Automatic control system, humidity set freely from 1% to 100% RH
- Standard water inlet, drainage and overflow, automatic water level control
- Atomization working without mechanical drive, pollution, noise

Model no.	SDH-50Z	SDH-60Z
Humidifying volume	15 kg/h	18 kg/h
Supply voltage	220v-50/60Hz	220v-50/60Hz
Power	1500 W	1800 W
Fog outlet	3 * 110mm	3 * 110mm
Overall dimensions	580*640*400 mm	580*640*400 mm
Applying area	150-180 m <sup>2</sup>	180-220 m <sup>2</sup>
Humidity range	RH10%-99%	RH10%-99%
Control accuracy	$\pm 3\%$	$\pm 3\%$



### SDH-70Z/80Z Ultrasonic humidifier

- High frequency oscillation to atomized water
- Oscillatory frequency 1.7 MHZ, atomization diameter  $\leq 10\mu\text{m}$
- Automatic control system, humidity set freely from 1% to 100% RH
- Standard water inlet, drainage and overflow, automatic water level control
- Atomization working without mechanical drive, pollution, noise

Model no.	SDH-70Z	SDH-80Z
Humidifying volume	21 kg/h	24 kg/h
Supply voltage	220v-50/60Hz	220v-50/60Hz
Power	2100 W	2400 W
Fog outlet	2 * 160mm	2 * 160mm
Overall dimensions	660*660*500 mm	660*660*500 mm
Applying area	220-240 m <sup>2</sup>	240-260 m <sup>2</sup>
Humidity range	RH10%-99%	RH10%-99%
Control accuracy	$\pm 3\%$	$\pm 3\%$



### SDH-90Z/100Z Ultrasonic humidifier

- High frequency oscillation to atomized water
- Oscillatory frequency 1.7 MHZ, atomization diameter  $\leq 10\mu\text{m}$
- Automatic control system, humidity set freely from 1% to 100% RH
- Standard water inlet, drainage and overflow, automatic water level control
- Atomization working without mechanical drive, pollution, noise

Model no.	SDH-90Z	SDH-100Z
Humidifying volume	27 kg/h	30 kg/h
Supply voltage	220v-50/60Hz	220v-50/60Hz
Power	2700 W	3000 W
Fog outlet	2 * 160mm	2 * 160mm
Overall dimensions	660*660*500 mm	660*660*500 mm
Applying area	260-300 m <sup>2</sup>	300-360 m <sup>2</sup>
Humidity range	RH10%-99%	RH10%-99%
Control accuracy	$\pm 3\%$	$\pm 3\%$



# Product Categories



Wet film humidifier



Wet film humidifier for  
Textile, Painting, Fruit  
Printing, Vegetables...



## SDW-03M Wet film humidifier

- LCD display,  $\pm 5\%$  accuracy humidity control
- No compressor, no refrigerant, eco-friendly
- Automatic water supply, water empty alert
- All plastic body sheel, elegant design
- Silent running by centrifugal fans

Model no.	SDW-03M
Humidifying volume	3 kg/h
Supply voltage	220v-50/60Hz
Power	120 W
Air volume	1500 m <sup>3</sup> /h
Overall dimensions	600*400*1190 mm
Applying area	30-60 m <sup>2</sup>
Humidity range	RH10%-99%
Control accuracy	$\pm 3\%$



### SDW-06M Wet film humidifier

- LCD display,  $\pm 5\%$  accuracy humidity control
- No compressor, no refrigerant, eco-friendly
- Automatic water supply, water empty alert
- All plastic body sheel, elegant design
- Silent running by centrifugal fans

Model no.	SDW-06M
Humidifying volume	6 kg/h
Supply voltage	220v-50/60Hz
Power	200 W
Air volume	1800~2500 m <sup>3</sup> /h
Overall dimensions	780*360*1615 mm
Applying area	60-100 m <sup>2</sup>
Humidity range	RH10%-99%
Control accuracy	$\pm 3\%$



### SDW-09M Wet film humidifier

- LCD display,  $\pm 5\%$  accuracy humidity control
- No compressor, no refrigerant, eco-friendly
- Automatic water supply, water empty alert
- All plastic body sheel, elegant design
- Silent running by centrifugal fans

Model no.	SDW-09M
Humidifying volume	9 kg/h
Supply voltage	220v-50/60Hz
Power	350 W
Air volume	2800 m <sup>3</sup> /h
Overall dimensions	780*360*1745 mm
Applying area	100-150 m <sup>2</sup>
Humidity range	RH10%-99%
Control accuracy	$\pm 3\%$



### SDW-12M/15M Wet film humidifier

- LCD display,  $\pm 5\%$  accuracy humidity control
- No compressor, no refrigerant, eco-friendly
- Automatic water supply, water empty alert
- All plastic body sheel, elegant design
- Silent running by centrifugal fans

Model no.	SDW-12M	SDW-15M
Humidifying volume	12 kg/h	15 kg/h
Supply voltage	220v-50/60Hz	220v-50/60Hz
Power	450 W	500 W
Air volume	3500 m <sup>3</sup> /h	4000 m <sup>3</sup> /h
Overall dimensions	700*400*1750 mm	700*400*1750 mm
Applying area	120-180 m <sup>2</sup>	150-200 m <sup>2</sup>
Humidity range	RH10%-99%	RH10%-99%
Control accuracy	$\pm 3\%$	$\pm 3\%$



### SDW-09M Wet film humidifier

- LCD display,  $\pm 5\%$  accuracy humidity control
- No compressor, no refrigerant, eco-friendly
- Automatic water supply, water empty alert
- All plastic body sheel, elegant design
- Silent running by centrifugal fans

Model no.	SDW-20M
Humidifying volume	20 kg/h
Supply voltage	220v-50/60Hz
Power	700 W
Air volume	5000 m <sup>3</sup> /h
Overall dimensions	1200*510*1730 mm
Applying area	180-250 m <sup>2</sup>
Humidity range	RH10%-99%
Control accuracy	$\pm 3\%$



FOR MORE PRODUCTS

[Eastdehumidifier.com](http://Eastdehumidifier.com)



Hangzhou Dahuan Technology Co.,Ltd.

Add: Room 1603-1604, Yifeng Times Mansion, Liangzhu Town

Yuhang District, Hangzhou, China 311113

[Ben@dahuan.ltd](mailto:Ben@dahuan.ltd)