

POWER BASE X20-B HV SERIES



INNOBATIVE LITHIUM-ION

Capacity 5-25kw

Capacity 5.12-25.6KWh

Garaye energy technology (Shenzhen) Co.,Ltd

www.garaye.com E-mail: info@garaye.com

FOLLOW US    



silver XBG black

Power Base X20-B is a high voltage battery system acquired flexible modular design with no extra cables, which provides optimized safety, life span and performance. They are perfect batteries for all applications.

Each set of Power Base Mate contains up to 5 battery module PBL-2.56 in series connection and achieves usable capacity between 5.12 to 25.6 kWh.



PLUG&PLAY

Convenient and flexible



FLEXIBLE

Modular rack design for easier installation and smaller landscape



INTELLIGENT BMS

Intelligent BMS to ensure a safe reliable operation



SAFE AND RELIABLE

Adopt high safety, long life, excellent performance LiFePO4 prismatic cells



LONG LIFE SPAN

Over 4000 times of cycle life



INTERCONNECTION

Multiple communications including RS485, CAN



ECO FRIENDLY

No outgassing and zero ambient emissions

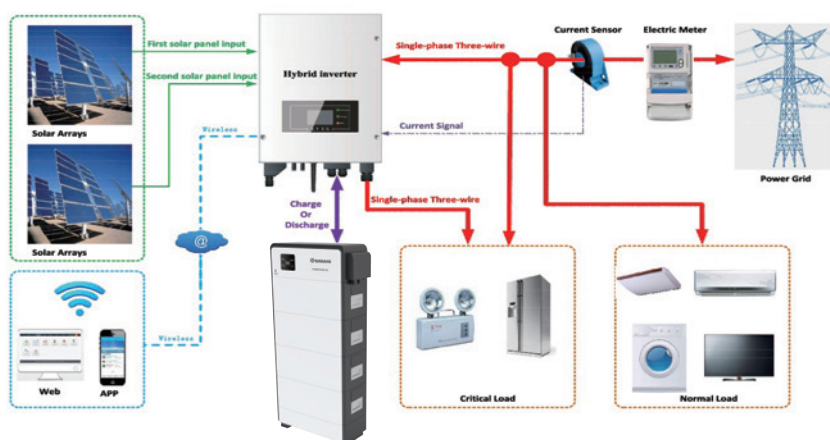


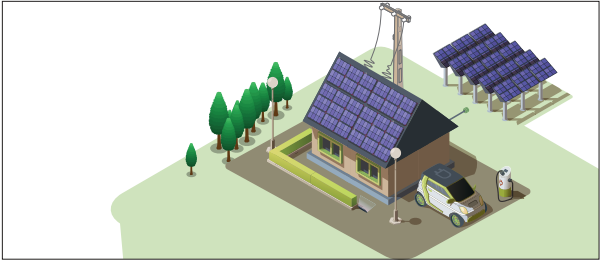
EXPANDABLE

Parallel on cabinet level available

AC Coupled Solar System

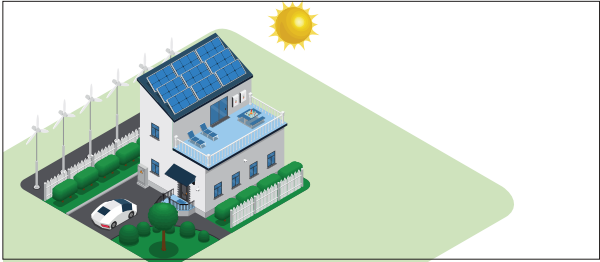
Power Base X20-B can compatible well with energy storage inverters





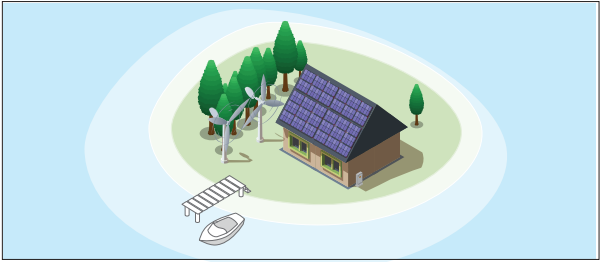
Residential grid-tie solar with backup power

Secure power for your home during grid outages by retrofitting your grid-tied system with backup power using proven GARAYE's solutions.



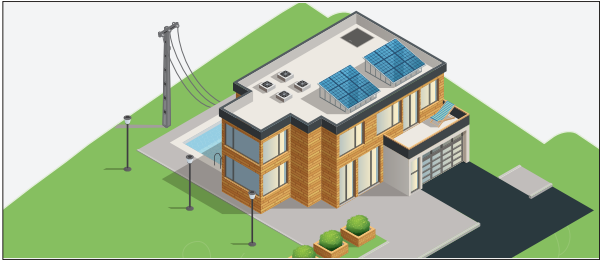
Self-consumption

Extra PV power for battery charging. When PV power is low or none, load consumption should take power from the battery first, and from the grid as little as possible.



Off-grid power supply

Cut your consumption peak and save money by reducing loads. When the grid is offline, the storage system should automatically switch to off-grid powering in less than 1s, for external emergency load powering.



Backup power

Respond to external power code control in less than 1s, which is sufficient for frequency regulation and peak shaving among areas.



Community electrification

Cut your consumption peak and save money by reducing loads.

Compitable inverter Brand:



PRODUCT SPECIFICATIONS

	X20-B-HV 5005	X20-B-HV 5008	X20-B-HV 5010	X20-B-HV 5013	X20-B-HV 10010	X20-B-HV 10015	X20-B-HV 10020	X20-B-HV 10026
Main Control Module	GA-MC500-100X1				GA-MC500-100X1			
Battery Module	GA-FS4850-16OSR1				GA-FS4850-16OSR1			
Battery Module NO.	2 modules	3 modules	4 modules	5 modules	2 modules	3 modules	4 modules	5 modules
Usable Energy[1]	5.12kWh	7.68kWh	10.24kWh	12.8kWh	10.24kWh	15.36kWh	20.48kWh	25.6kWh
Max Output Power[2]	5kW	7.5kW	10kW	12.5kW	10kW	15kW	20kW	25kW
Peak Output Power[3]	5.5kW,10s	8.5kW,10s	11.0kW,10s	13.5kW,10s	11kW,10s	16.5kW,10s	22kW,10s	28kW,10s
Nominal Voltage	102.4V	153.6V	204.8V	256.0V	102.4V	153.6V	204.8V	256.0V
Operating Voltage Range	96V~112V	144V~168V	192V~224V	240V~280V	96V~112V	144V~168V	192V~224V	240V~280V
DOD	90%							
Communication	CAN/RS485							
Dimensions(L/H/W)	600X826X268 mm	600X1053X268mm	600X1280X268mm	600X1507X268mm	600X826X268 mm	600X1053X268mm	600X1280X268mm	600X1507X268mm
Net Weight	95kg	131kg	167kg	203kg	107kg	150kg	193kg	236kg
Protection Level	IP55							
Warranty[4]	10 year product Warranty							
Operating temperature[5]	-20℃~50℃							
Certification	TUV (IEC62619) / UN38.3 / MSDS							
Scalability	Max.5 systems in parallel							
Compatible Inverters[6]	SMA, Schneider, Victron, Studer, SunSynk, Growatt, GoodWe, Sofar, Ginlong/Solis, Sermatec, and more							
Application	ON Grid (Self consumption/ON Grid+Backup/Backup)and Off Grid							

[1] Test conditions:100% DOD,0.2C charge & discharge @+25℃.System Usable Energy may be variant with different inverter brands

[2] Main circuit breaker maximum current capability.

[3] In off-grid applications, the main circuit breaker should be bypassed,use a separate circuit breaker with a large current capacity.

[4] Conditions:Refer to power base mate Warranty.

[5] -10℃ ~ +12℃ will be derating.

[6] Refer to Power Base Mate Compatible Inverter List.

FOLLOW US    



Garaye energy technology (Shenzhen) Co., Ltd



Further information can be found at: www.garaye.com

Add.: 23rd Floor, Block B, Zhihuijiayuan, 76 Baohe Avenue,
Baolong Street, Longgang District, Shenzhen, China. 518116

Tel: +86 755 28306456

E-mail: info@garaye.com

