



POWER BASE M50 LV SERIES



INNOBATIVE LITHIUM-ION

Capacity 5KW

Capacity 5.12KWh

Garaye energy technology (Shenzhen) Co.,Ltd

www.garaye.com E-mail: info@garaye.com

FOLLOW US    



silver XBG black



PLUG&PLAY

Convenient and flexible



FLEXIBLE

Modular rack design for easier installation and smaller landscape



INTELLIGENT BMS

Intelligent BMS to ensure a safe reliable operation



SAFE AND RELIABLE

Adopt high safety, long life, excellent performance LiFePO4 prismatic cells



LONG LIFE SPAN

Over 4000 times of cycle life



INTERCONNECTION

Multiple communications including RS485, CAN



PERFECT MATCH OF ENERGY STORAGE INVERTER

Compatible with various brands of energy storage inverters

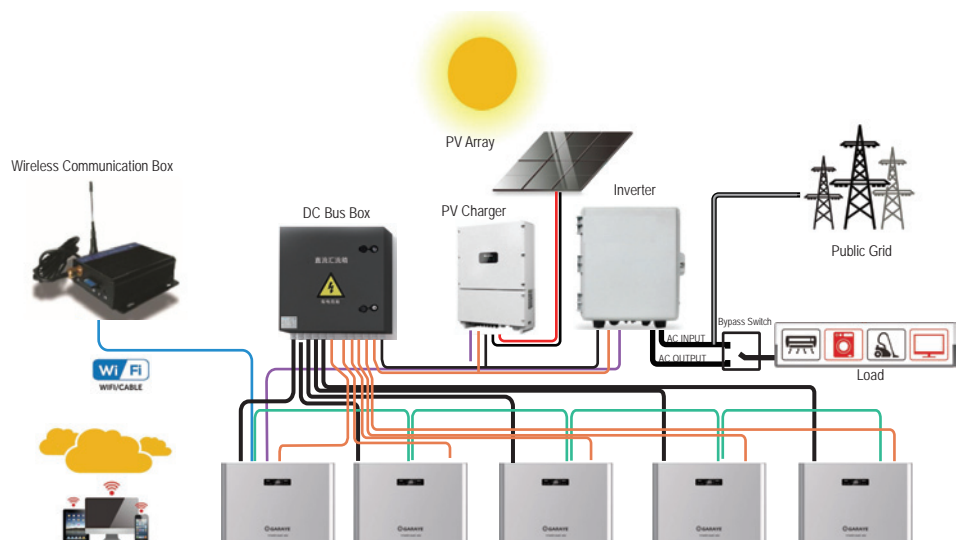


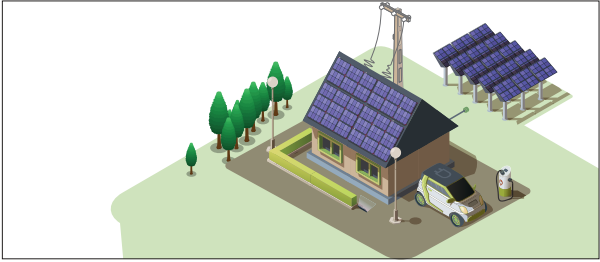
EXPANDABLE

Parallel on cabinet level available

Wall-mount mode

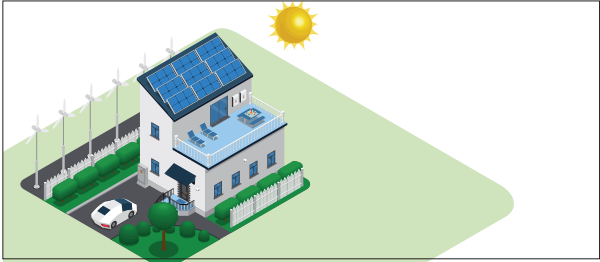
Power Base M50 can compatible well with energy storage inverters





Residential grid-tie solar with backup power

Secure power for your home during grid outages by retrofitting your grid-tied system with backup power using proven GARAYE's solutions.



Self-consumption

Extra PV power for battery charging. When PV power is low or none, load consumption should take power from the battery first, and from the grid as little as possible.



Off-grid power supply

Cut your consumption peak and save money by reducing loads. When the grid is offline, the storage system should automatically switch to off-grid powering in less than 1s, for external emergency load powering.



Backup power

Respond to external power code control in less than 1s, which is sufficient for frequency regulation and peak shaving among areas.

Compitable inverter Brand:



PRODUCT SPECIFICATIONS

Model	Power Base M50
Battery Type	LiFePO4
Energy	5120Wh
Rated Capacity	100Ah
Rated Voltage	51.2V
Battery cell	3.2V 100Ah Pirsmatic Battery Cell
Configuration (*S*P)	16S1P
Discharge Cut-off Protect Voltage	40V
Charge Cut-off Protect Voltage	58.4V
Max. Charge Current	100A
Max. Discharge Current	100A
Communication Port	CAN, RS485
Compitable Inverter Brand	SMA, Schneider, Victron, Studer, SunSynk, Growatt, GoodWe, Sofar, Ginlong/Solis, Sermatec, and more
Parallel	Max. 63 units in Parallels to get 322.5 kwh.
Cycle life	100% DOD 3000 times
L*W*H (mm)	600*480*135
Net Weight (KG)	58KG
Cooling	Natural cooling
Environment	Indoor
Mounting options	Floor or wall mount
Discharge Temperature (°C)	-10°C~+60°C
Charge Temperature (°C)	0°C~+45°C
Storage Conditions	-20° C to 30° C (-4° F to 86° F) Up to 95% RH, non-condensing State of Energy (SoE): 25% initial
Maximum Elevation	3000 m (9843 ft)

FOLLOW US     



Garaye energy technology (Shenzhen) Co., Ltd



Further information can be found at: www.garaye.com

Add.: 23rd Floor, Block B, Zhihuijiayuan, 76 Baohe Avenue,
Baolong Street, Longgang District, Shenzhen, China. 518116

Tel: +86 755 28306456

E-mail: info@garaye.com

