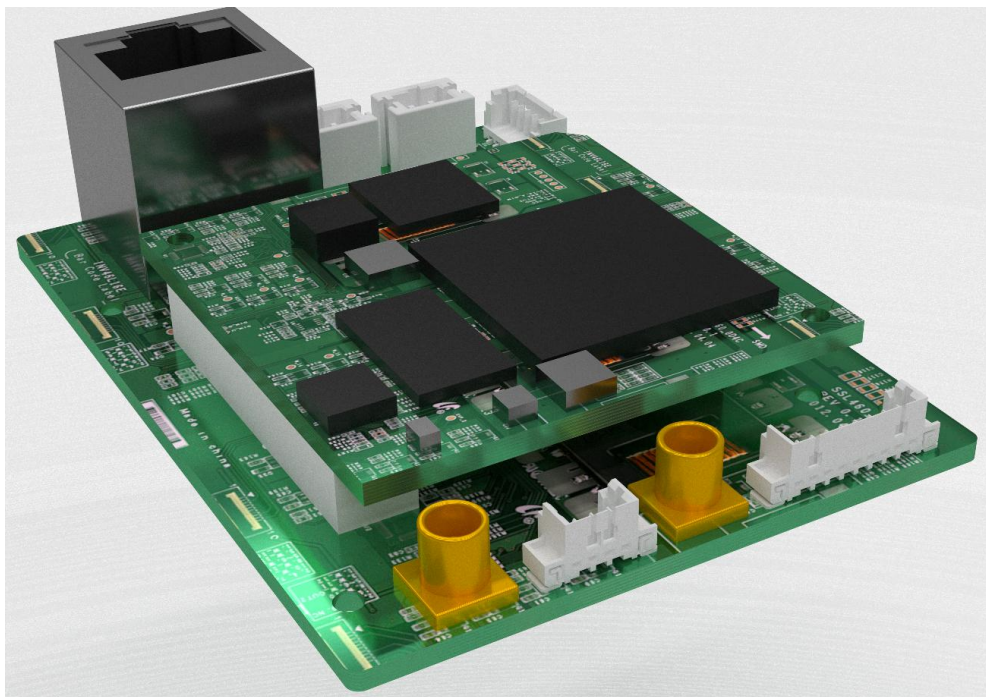


## K10 Mini SDI+CVBS Code Plate H265/H264

User' s Manual

V1.0



## Introduction:

K10 SDI+CVBS mini code plate is a professional SDI and CVBS signal video coding product. It supports that 1 SDI signal and 1 CVBS signal asynchronously work, The output format of encoding could be double code stream H.265/H.264, audio MP3/AAC. The coding rate is adjustable, and the picture quality is controllable. It supports HTTP/RTSP/RTMP/SRT/RTP/UDP/HLS transfer agreements. It is easy to use, without hardware compatibility issues.

## Performance:

- ◆ Embedded hardware coding
- ◆ Supported resolution: 1920x1080p/1280x720p/720\*576i/640\*480i, etc. (customizable)
- ◆ Coding standard: BASELINE PROFILE / MAIN PROFILE / HIGH PROFILE
- ◆ It supports one computer and multiple devices to display at the same time
- ◆ It supports intelligent encoding mode, and also supports ultra-low-latency video transmission (delay is about 200ms)
- ◆ The network interface adopts 1000M full-duplex mode
- ◆ 1 channel SDI signal input support (LEVEL A mode and LEVEL B mode. 3G SDI, HD SDI, SD SDI is supported),
- ◆ Support RTSP/RTMP/HTTP/RTP/UDP/SRT/HLS/unicast, multicast and other protocols (RTMP supports adding user and password functions), support DHCP protocol, ONVIF protocol, GB28181 protocol
- ◆ Compatible with streaming media servers such as Wowza/FMS/RED5

- ◆It supports multi-protocol and multi-stream functions such as master and vice. Main and secondary streams 264, 265 are selected respectively. The main stream and sub stream can be transmitted using different network protocols.
- ◆Bit rate control CBR/VBR 16KBIT/S~20MBIT/S
- ◆Video Package: TS stream
- ◆It supports streaming resolution custom output settings.
- ◆Transmission method: TCP, UDP, 1000M (RJ45 duplex network port)
- ◆It supports code stream adding watermark function (OSD), XY axis. Font can be set.
- ◆It can access WEB English pages, and can add minor languages according to customer needs
- ◆It supports DHCP to obtain IP automatically, and also supports one-key restore, version upgrade and remote maintenance
- ◆With low power consumption design, it supports set-top box decoding

## Parameter:

<b>Model</b>	K10 mini code plate	
<b>Input</b>	1 channel SDI signal, 1 channel CVBS signal input (asynchronously work)	
<b>Output</b>	12V DC out, RS422/RS485	
<b>Video</b>	Input resolution	1920x1080p/1280x720p/720*576i/640*480i or other resolutions
	Encoding standard	H.265 / H.264
	Encoding level	H.265 MAIN PROFILE, H.264 BASELINE PROFILE H.264 MAIN PROFILE, H.264 HIGH PROFILE
	Coded size	320*180~1920*1080 (customizable)

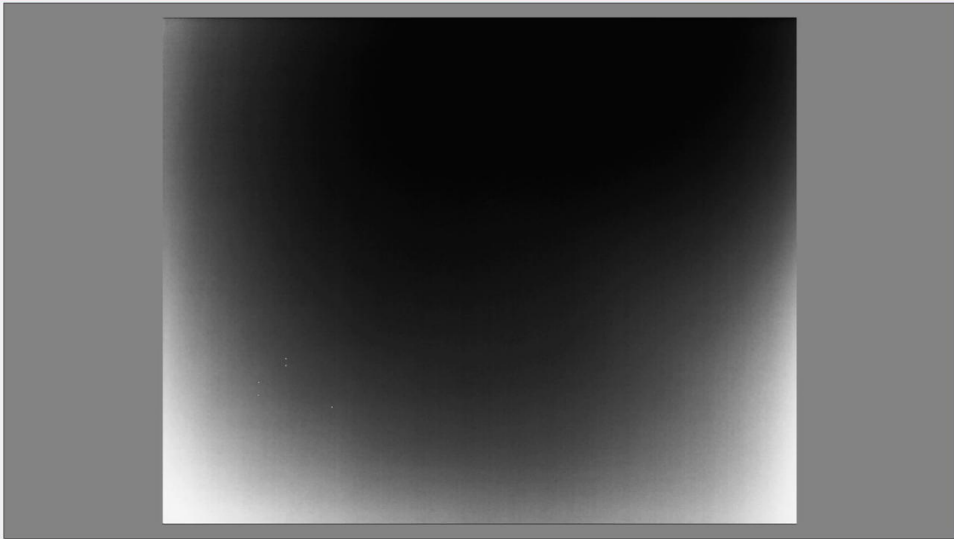
	Video bit rate	CBR/VBR bit rate control 16KBIT/S~20MBIT/S
	Video frame rate	5~60 frames
	OSD	Text, picture
<b>Audio</b>	Input selection	1 channel audio and video interface (support audio gain)
	Audio encoding	AAC/MP3
	Audio code rate	24Kb/s~320Kb/s
	Sampling rate	Default
<b>IP Output</b>	1 RJ45 100M adaptive Ethernet port, TS standard stream, ONVIF protocol	
<b>System</b>	Network protocol	Support HTTP, RTSP, RTMP, UDP, RTP, multicast, unicast, HLS, ONVIF protocol, GB28181 protocol, FTP
	Configuration management	Support IE configuration, remote upgrade
<b>Serial port</b>	RS422/485, etc. (can externally control infrared thermal imager, infrared lens, PTZ, etc.)	
<b>General</b>	Power	12V~2A
	Power Consumption	4W

	n	
	Dimensions	67mm x 50mm x 20mm (LxWxH)
	Operating temperature	-20°C+ 60°C
	Operating humidity	<90%, non-condensing
	Weight	38g

Our company reserves the right to adjust product parameters. If you have any questions, please feel free to contact us.

192.168.1.168/pcWeb/indexE.html

QUANHOM
Home
Protocols1
Protocols2
RTMP
Sources
Net
System
More
Encoder
EN



**Lens Control**

ZOOM+ ZOOM-

FOCUS+ FOCUS-

Autofocus

Zoom Speed: 1

Focus Speed: 5

Serial Async: OFF

Protocol type: Protocol type B

Baud Rate: 115200

**Camera Module Control**

Background Shutter: OFF

Contrast: 230

Bridge: 170

DDE: 1 Coloral Mode: White

Electron: 3.0 Cross Cursor: OFF

Image Mirroring: Normal Baud Rate: 115200

Protocol type: Type B

**Serial port read-write**

Serial: 1-RS422

F0 06 00 80 00 00 00 04 7A

F0 06 00 80 00 00 00 00 76

## Version record

Version	Date	Illustrate
V1.0	2022.11.30	