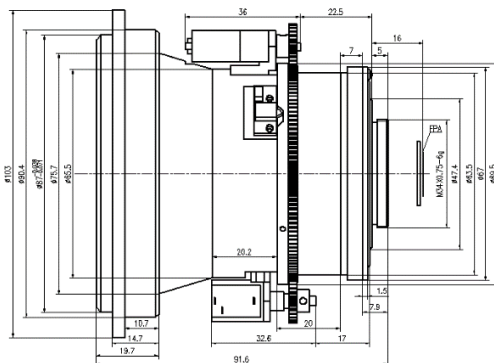
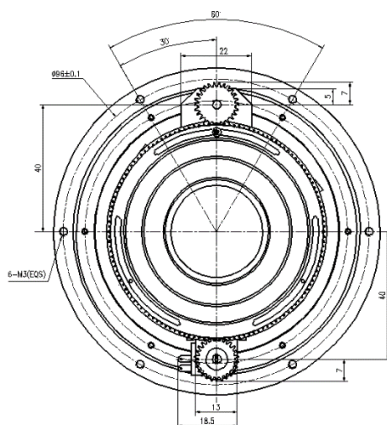


GLE751ORDF 75mm f/1.0 Motorized Lens



HFOV	160x120	320x240	336x256	384x288	640x480	640x512	1024x768	1280x1024
25μm	3.1 °	6.1 °	6.4 °	7.3 °				
17μm	2.1 °	4.2 °	4.4 °	5.0 °	8.3 °	8.3 °		
12μm	1.5 °	2.9 °	3.1 °	3.5 °	5.9 °	5.9 °		

Optical

Focal Length	75 mm
F/#	1.0
Effective Imaging Surface	Ø14
Focus Range	5.0m-Infinity

Mechanical

Interface	Flange
Focus Mechanism	Motorized
Dimensions(mm)	Ø103x91.6
Weight	<495g

Environmental

External Coating	AR/DLC
Operating Temperature	-40°C to +60°C
Storage Temperature	-50°C to +90°C
Front Element Sealing	IP67