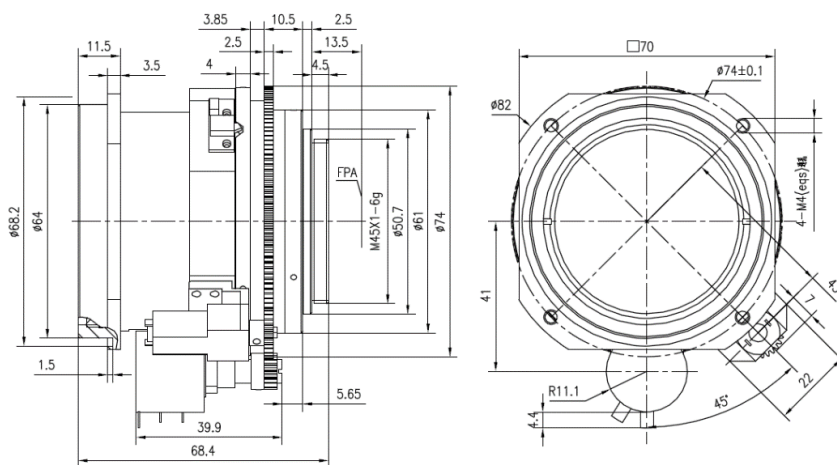


GLE5010D 50mm f/1.0 Motorized Lens (with front flange)



HFOV	160x120	320x240	336x256	384x288	640x480	640x512	1024x768	1280x1024
25μm	4.6°	9.1°	9.6°	11.0°				
17μm	3.1°	6.2°	6.5°	7.5°	12.4°	12.4°		
12μm	2.2°	4.4°	4.6°	5.3°	8.8°	8.8°		

Optical

Focal Length	50mm
F/#	1.0
Focus Range	3m-Infinity

Mechanical

Interface	Thread
Focus Mechanism	Motorized
Dimensions (mm)	Ø68.2x68.4
Weight	407g

Electrical & Communications

Focus feedback	VISHAY 534-10K(Optional)
Communications	NA

Environmental

External Coating	DLC
Operating Temperature	-40°C to +60°C
Storage Temperature	-40°C to +80°C
Front Element Sealing	IP67