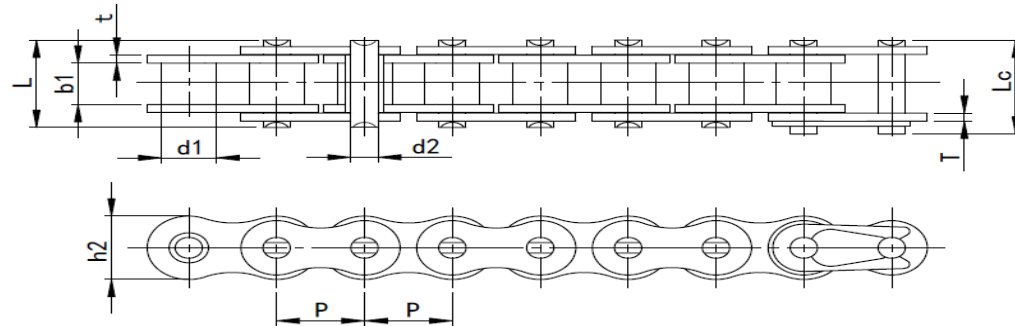


Short pitch standard roller chain

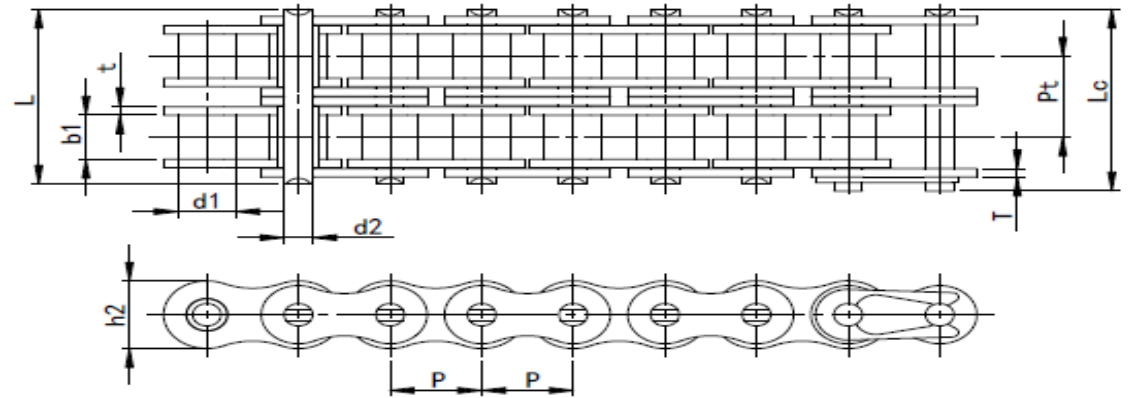
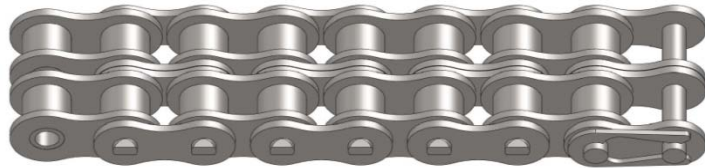
Simplex chain



ZMIE Chain No.		Pitch	Roller diameter	Width between inner plates	Pin diameter	Pin length		Inner plate depth	Plate thickness	Ultimate tensile strength	Weight per meter
		P	d1 max	b1 min	d2 max	L max	Lc max	h2 max	T max	Q min	q
		mm	mm	mm	mm	mm	mm	mm	mm	KN	kg/m
04CSS-1	25SS-1	6.35	3.3	3.18	2.31	7.9	8.4	6	0.8	2.1	0.15
06CSS-1	35SS-1	9.525	5.08	4.77	3.58	12.4	13.17	9	1.3	4.74	0.33
085SS-1	41SS-1	12.7	7.77	6.25	3.58	13.75	15	9.91	1.3	4	0.41
08ASS-1	40SS-1	12.7	7.95	7.85	3.96	16.6	17.8	12	1.5	8.46	0.62
10ASS-1	50SS-1	15.875	10.16	9.4	5.08	20.7	22.2	15.09	2.03	13.32	1.02
12ASS-1	60SS-1	19.05	11.91	12.57	5.94	25.9	27.7	18	2.42	19.08	1.5
16ASS-1	80SS-1	25.4	15.88	15.75	7.92	32.7	35	24	3.25	34.02	2.6
20ASS-1	100SS-1	31.75	19.05	18.9	9.53	40.4	44.7	30	4	53.1	3.91

24ASS-1	120SS-1	38.1	22.23	25.22	11.1	50.3	54.3	35.7	4.8	76.2	5.62
28ASS-1	140SS-1	44.45	25.4	25.22	12.7	54.4	59	41	5.6	103.44	7.5
32ASS-1	160SS-1	50.8	28.58	31.55	14.27	64.8	69.6	47.8	6.4	136.08	10.1
36ASS-1	180SS-1	57.15	35.71	35.48	17.46	72.8	78.6	53.6	7.2	168.12	13.45
40ASS-1	200SS-1	63.5	39.68	37.85	19.85	80.3	87.2	60	8	212.28	16.15
48ASS-1	240SS-1	76.2	47.63	47.35	23.81	95.5	103	72.39	9.5	306.18	23.2
04BSS-1		6	4	2.8	1.85	6.8	7.8	5	0.6	2.1	0.11
05BSS-1		8	5	3	2.31	8.2	8.9	7.1	0.8	3	0.2
06BSS-1		9.525	6.35	5.72	3.28	13.15	14.1	8.2	1.3	5.4	0.41
08BSS-1		12.7	8.51	7.75	4.45	16.7	18.2	11.8	1.6	10.8	0.69
10BSS-1		15.875	10.16	9.65	5.08	19.5	20.9	14.7	1.7	13.44	0.93
12BSS-1		19.05	12.07	11.68	5.72	22.5	24.2	16	1.85	17.4	1.15
16BSS-1		25.4	15.88	17.02	8.28	36.1	37.4	21	4.15/3.1	36	2.71
20BSS-1		31.75	19.05	19.56	10.19	41.3	45	26.4	4.5/3.5	57	3.7
24BSS-1		38.1	25.4	25.4	14.63	53.4	57.8	33.2	6.0/4.8	96	7.1
28BSS-1		44.45	27.94	30.99	15.9	65.1	69.5	36.7	7.5/6.0	120	8.5
32BSS-1		50.8	29.21	30.99	17.81	66	71	42	7.0/6.0	150	10.25
40BSS-1		63.5	39.37	38.1	22.89	82.2	89.2	52.96	8.5/8.0	213	16.35
48BSS-1		76.2	48.26	45.72	29.24	99.1	107	63.8	12.0/10.0	336	25

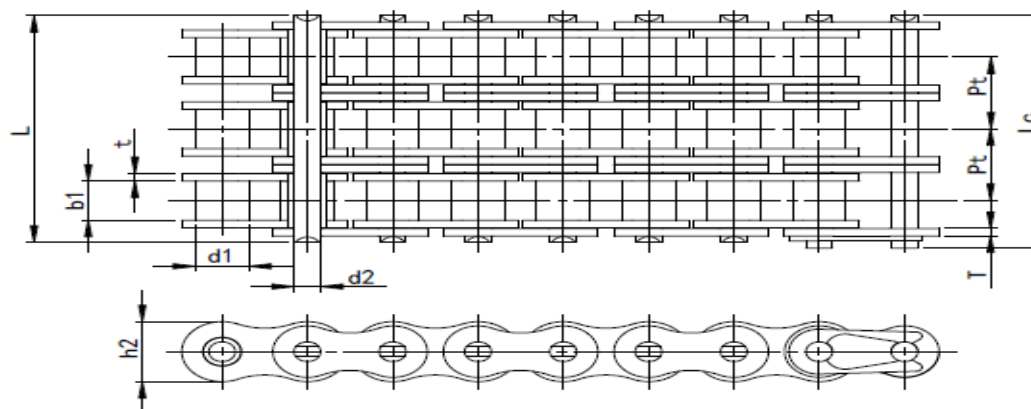
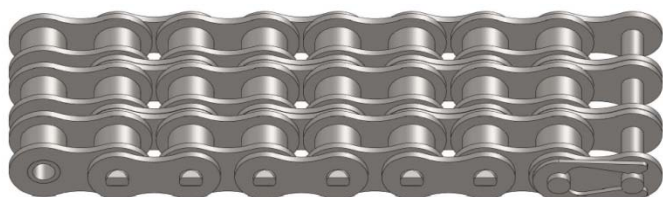
Duplex chain



ZMIE Chain No.		Pitch	Roller diameter	Width between inner plates	Pin diameter	Pin length		Inner plate depth	Plate thickness	Transverse pitch	Ultimate tensile strength	Weight per meter
		P	d1 max	b1 min	d2 max	L max	Lc max	h2 max	T max	Pt	Q min	q
		mm	mm	mm	mm	mm	mm	mm	mm	mm	KN	kg/m
04CSS-2	25SS-2	6.35	3.3	3.18	2.31	14.5	15	6	0.8	6.4	4.2	0.28
06CSS-2	35SS-2	9.525	5.08	4.77	3.58	22.5	23.3	9	1.3	10.13	9.48	0.63
085SS-2	41SS-2	12.7	7.77	6.25	3.58	25.7	26.9	9.91	1.3	11.95	8	0.81
08ASS-2	40SS-2	12.7	7.95	7.85	3.96	31	32.2	12	1.5	14.38	16.92	1.12
10ASS-2	50SS-2	15.875	10.16	9.4	5.08	38.9	40.4	15.09	2.03	18.11	26.46	2
12ASS-2	60SS-2	19.05	11.91	12.57	5.94	48.8	50.5	18	2.42	22.78	38.16	2.92
16ASS-2	80SS-2	25.4	15.88	15.75	7.92	62.7	64.3	24	3.25	29.29	68.04	5.15

20ASS-2	100SS-2	31.75	19.05	18.9	9.53	76	80.5	30	4	35.76	106.2	7.8
24ASS-2	120SS-2	38.1	22.23	25.22	11.1	95.8	99.7	35.7	4.8	45.44	152.4	11.7
28ASS-2	140SS-2	44.45	25.4	25.22	12.7	103.3	107.9	41	5.6	48.87	206.88	15.14
32ASS-2	160SS-2	50.8	28.58	31.55	14.27	123.3	128.1	47.8	6.4	58.55	272.16	20.14
36ASS-2	180SS-2	57.15	35.71	35.48	17.46	138.6	144.4	53.6	7.2	65.84	336.3	29.22
40ASS-2	200SS-2	63.5	39.68	37.85	19.85	151.9	158.8	60	8	71.55	424.56	32.24
48ASS-2	240SS-2	76.2	47.63	47.35	23.81	183.4	190.8	72.39	9.5	87.83	612.36	45.23
05BSS-2		8	5	3	2.31	13.9	14.5	7.1	0.8	5.64	4.68	0.33
06BSS-2		9.525	6.35	5.72	3.28	23.4	24.4	8.2	1.3	10.24	10.14	0.77
08BSS-2		12.7	8.51	7.75	4.45	31.2	32.2	11.8	1.6	13.92	19.2	1.34
10BSS-2		15.875	10.16	9.65	5.08	36.1	37.5	14.7	1.7	16.59	26.7	1.84
12BSS-2		19.05	12.07	11.68	5.72	42	43.6	16	1.85	19.46	34.68	2.31
16BSS-2		25.4	15.88	17.02	8.28	68	69.3	21	4.15/3.1	31.88	63.6	5.42
20BSS-2		31.75	19.05	19.56	10.19	77.8	81.5	26.4	4.5/3.5	36.45	102	7.2
24BSS-2		38.1	25.4	25.4	14.63	101.7	106.2	33.2	6.0/4.8	48.36	168	13.4
28BSS-2		44.45	27.94	30.99	15.9	124.6	129.1	36.7	7.5/6.0	59.56	216	16.6
32BSS-2		50.8	29.21	30.99	17.81	124.6	129.6	42	7.0/6.0	58.55	270	21
40BSS-2		63.5	39.37	38.1	22.89	154.5	161.5	52.96	8.5/8.0	72.29	378	32
48BSS-2		76.2	48.26	45.72	29.24	190.4	198.2	63.8	12.0/10.0	91.21	600	50

Triplex chain



ZMIE Chain No.		Pitch	Roller diameter	Width between inner plates	Pin diameter	Pin length		Inner plate depth	Plate thickness	Transverse pitch	Ultimate tensile strength	Weight per meter
		P	d1 max	b1 min	d2 max	L max	Lc max	h2 max	T max	Pt	Q min	q
		mm	mm	mm	mm	mm	mm	mm	mm	mm	KN	kg/m
04CSS-3	25SS-3	6.35	3.3	3.18	2.31	21	21.5	6	0.8	6.4	6.3	0.44
06CSS-3	35SS-3	9.525	5.08	4.77	3.58	32.7	33.5	9	1.3	10.13	14.22	1.05
08ASS-3	40SS-3	12.7	7.95	7.85	3.96	45.4	46.6	12	1.5	14.38	25.38	1.9
10ASS-3	50SS-3	15.875	10.16	9.4	5.08	57	58.5	15.09	2.03	18.11	39.96	3.09
12ASS-3	60SS-3	19.05	11.91	12.57	5.94	71.5	73.3	18	2.42	22.78	57.24	4.54
16ASS-3	80SS-3	25.4	15.88	15.75	7.92	91.7	93.6	24	3.25	29.29	102.06	7.89
20ASS-3	100SS-3	31.75	19.05	18.9	9.53	112.2	116.3	30	4	35.76	159.3	11.77

24ASS-3	120SS-3	38.1	22.23	25.22	11.1	141.4	145.2	35.7	4.8	45.44	228.6	17.53
28ASS-3	140SS-3	44.45	25.4	25.22	12.7	152.2	156.8	41	5.6	48.87	342.72	22.2
32ASS-3	160SS-3	50.8	28.58	31.55	14.27	181.8	186.6	47.8	6.4	58.55	408.24	30.02
36ASS-3	180SS-3	57.15	35.71	35.48	17.46	204.4	210.2	53.6	7.2	65.84	504.42	38.22
40ASS-3	200SS-3	63.5	39.68	37.85	19.85	223.5	230.4	60	8	71.55	636.84	49.03
48ASS-3	240SS-3	76.2	47.63	47.35	23.81	271.3	278.6	72.39	9.5	87.83	918.54	71.6
05BSS-3		8	5	3	2.31	19.5	20.2	7.1	0.8	5.64	6.66	0.48
06BSS-3		9.525	6.35	5.72	3.28	33.5	34.6	8.2	1.3	10.24	14.94	1.16
08BSS-3		12.7	8.51	7.75	4.45	45.1	46.1	11.8	1.6	13.92	28.5	2.03
10BSS-3		15.875	10.16	9.65	5.08	52.7	54.1	14.7	1.7	16.59	40.02	2.77
12BSS-3		19.05	12.07	11.68	5.72	61.5	63.1	16	1.85	19.46	52.02	3.46
16BSS-3		25.4	15.88	17.02	8.28	99.8	101.2	21	4.15/3.1	31.88	96	8.13
20BSS-3		31.75	19.05	19.56	10.19	114.2	117.9	26.4	4.5/3.5	36.45	150	10.82
24BSS-3		38.1	25.4	25.4	14.63	150.1	154.6	33.2	6.0/4.8	48.36	255	20.1
28BSS-3		44.45	27.94	30.99	15.9	184.2	188.7	36.7	7.5/6.0	59.56	318	24.92
32BSS-3		50.8	29.21	30.99	17.81	183.2	188.2	42	7.0/6.0	58.55	402	31.56
40BSS-3		63.5	39.37	38.1	22.89	226.8	233.8	52.96	8.5/8.0	72.29	570	48.1
48BSS-3		76.2	48.26	45.72	29.24	281.6	289.4	63.8	12.0/10.0	91.21	900	75