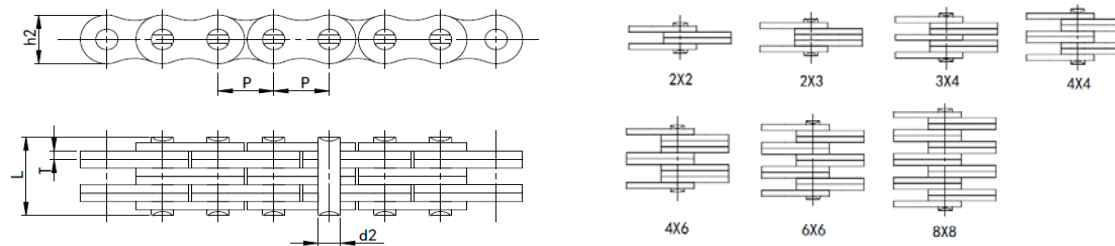


Leaf stainless steel chain

LH (BL) series

leaf stainless steel chain for sky stacker crane



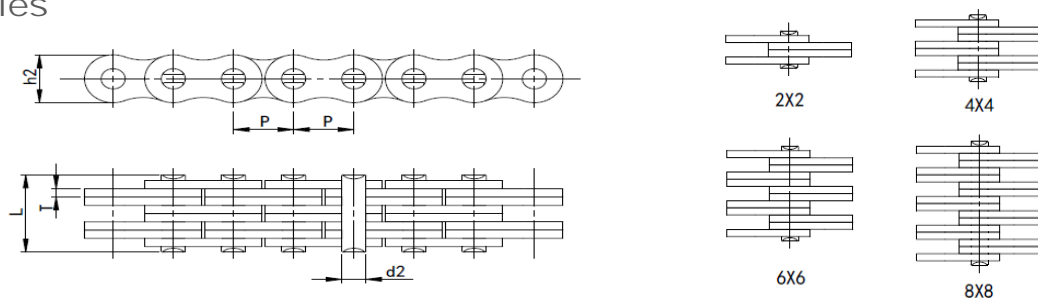
| ZMIE Chain No. | Pitch | Chain lacing | Plate depth | Plate thickness | Pin diameter | Pin length | Ultimate tensile strength | Weight per meter |
|----------------|---------|--------------|-------------|-----------------|--------------|------------|---------------------------|------------------|
| | P | | h2 max | T max | d2 max | L max | Q min | q |
| | mm | | mm | mm | mm | mm | KN | kg/m |
| LH0822-SS | BL422SS | 2x2 | | | | 11.05 | 13.32 | 0.64 |
| LH0823-SS | BL423SS | 2x3 | | | | 13.16 | 13.32 | 0.8 |
| LH0834-SS | BL434SS | 3x4 | | | | 17.4 | 20.04 | 1.12 |
| LH0844-SS | BL444SS | 4x4 | 12.7 | 2.08 | 5.09 | 19.51 | 26.7 | 1.28 |
| LH0846-SS | BL446SS | 4x6 | | | | 23.75 | 26.7 | 1.6 |
| LH0866-SS | BL466SS | 6x6 | | | | 27.99 | 40.02 | 1.92 |
| LH0888-SS | BL488SS | 8x8 | | | | 36.45 | 53.4 | 2.56 |

| | | | | | | | | | |
|-----------|---------|-------|-----|-------|-----|------|-------|--------|-----|
| LH1022-SS | BL522SS | 15.9 | 2x2 | 15.1 | 2.4 | 6.0 | 12.96 | 20.0 | 0.9 |
| LH1023-SS | BL523SS | | 2x3 | | | | 15.37 | 20.0 | 1.1 |
| LH1034-SS | BL534SS | | 3x4 | | | | 20.32 | 29.3 | 1.5 |
| LH1044-SS | BL544SS | | 4x4 | | | | 22.78 | 40.0 | 1.8 |
| LH1046-SS | BL546SS | | 4x6 | | | | 27.84 | 40.0 | 2.2 |
| LH1066-SS | BL566SS | | 6x6 | | | | 32.69 | 60.1 | 2.7 |
| LH1088-SS | BL588SS | | 8x8 | | | | 42.57 | 80.0 | 3.5 |
| LH1222-SS | BL622SS | | | | | | 2x2 | | |
| LH1223-SS | BL623SS | | 2x3 | | | | 20.73 | 29.34 | 1.8 |
| LH1234-SS | BL634SS | | 3x4 | | | | 24.43 | 45.36 | 2.5 |
| LH1244-SS | BL644SS | 19.05 | 4x4 | 18.11 | 3.3 | 7.94 | 30.78 | 28.74 | 2.9 |
| LH1246-SS | BL646SS | | 4x6 | | | | 37.49 | 28.74 | 3.6 |
| LH1266-SS | BL666SS | | 6x6 | | | | 44.2 | 88.08 | 4.3 |
| LH1288-SS | BL688SS | | 8x8 | | | | 57.61 | 117.42 | 5.8 |
| LH1622-SS | BL822SS | 25.4 | 2x2 | 24.1 | 4.1 | 9.5 | 21.34 | 50.7 | 2.2 |
| LH1623-SS | BL823SS | | 2x3 | | | | 25.48 | 50.7 | 2.7 |
| LH1634-SS | BL834SS | | 3x4 | | | | 33.76 | 77.4 | 3.8 |
| LH1644-SS | BL844SS | | 4x4 | | | | 37.9 | 101.4 | 4.3 |
| LH1646-SS | BL846SS | | 4x6 | | | | 46.18 | 101.4 | 5.4 |
| LH1666-SS | BL866SS | | 6x6 | | | | 54.46 | 152.2 | 6.5 |
| LH1688-SS | BL888SS | | 8x8 | | | | 71.02 | 202.9 | 8.6 |

| | | | | | | | | | |
|-----------|----------|-------|-----|-------|------|-------|-------|--------|------|
| LH2022-SS | BL1022SS | | 2x2 | | | | 25.37 | 69.36 | 3.4 |
| LH2023-SS | BL1023SS | | 2x3 | | | | 30.33 | 39.36 | 4.3 |
| LH2034-SS | BL1034SS | | 3x4 | | | | 40.23 | 109.44 | 6 |
| LH2044-SS | BL1044SS | 31.75 | 4x4 | 30.18 | 4.9 | 11.11 | 45.19 | 138.78 | 6.9 |
| LH2046-SS | BL1046SS | | 4x6 | | | | 55.09 | 138.78 | 8.6 |
| LH2066-SS | BL1066SS | | 6x6 | | | | 65 | 208.2 | 10.3 |
| LH2088-SS | BL1088SS | | 8x8 | | | | 84.81 | 277.56 | 13.8 |
| LH2422-SS | BL1222SS | 38.1 | 2x2 | 36.2 | 5.8 | 12.7 | 29.62 | 90.7 | 4.6 |
| LH2423-SS | BL1223SS | | 2x3 | | | | 35.43 | 90.7 | 5.8 |
| LH2434-SS | BL1234SS | | 3x4 | | | | 47.07 | 146.8 | 8.1 |
| LH2444-SS | BL1244SS | | 4x4 | | | | 52.88 | 181.5 | 9.3 |
| LH2446-SS | BL1246SS | | 4x6 | | | | 64.52 | 181.5 | 11.6 |
| LH2466-SS | BL1266SS | | 6x6 | | | | 76.15 | 272.2 | 13.9 |
| LH2488-SS | BL1288SS | | 8x8 | | | | 99.42 | 363.0 | 18.6 |
| LH2822-SS | BL1422SS | | 2x2 | | | | 33.55 | 114.78 | 6.1 |
| LH2823-SS | BL1423SS | | 2x3 | | | | 40.16 | 114.78 | 7.6 |
| LH2834-SS | BL1434SS | | 3x4 | | | | 53.37 | 189.48 | 10.6 |
| LH2844-SS | BL1444SS | 44.45 | 4x4 | 42.24 | 6.55 | 14.29 | 59.97 | 229.56 | 12.2 |
| LH2846-SS | BL1446SS | | 4x6 | | | | 73.18 | 229.56 | 15.2 |
| LH2866-SS | BL1466SS | | 6x6 | | | | 86.39 | 346.98 | 18.2 |
| LH2888-SS | BL1488SS | | 8x8 | | | | 112.8 | 459.06 | 24.3 |

| | | | | | | | | | |
|-----------|----------|------|-----|-------|------|-------|--------|---------|------|
| LH3222-SS | BL1622SS | 50.8 | 2x2 | 48.3 | 7.5 | 17.5 | 39.01 | 173.5 | 8.0 |
| LH3223-SS | BL1623SS | | 2x3 | | | | 46.58 | 173.5 | 10.0 |
| LH3234-SS | BL1634SS | | 3x4 | | | | 61.72 | 264.2 | 14.0 |
| LH3244-SS | BL1644SS | | 4x4 | | | | 69.2 | 347.0 | 16.0 |
| LH3246-SS | BL1646SS | | 4x6 | | | | 84.43 | 357.0 | 20.0 |
| LH3266-SS | BL1666SS | | 6x6 | | | | 99.57 | 514.4 | 24.0 |
| LH3288-SS | BL1688SS | | 8x8 | | | | 129.84 | 693.9 | 32.0 |
| LH4022-SS | BL2022SS | | 2x2 | | | | 51.74 | 260.22 | 15.8 |
| LH4023-SS | BL2023SS | | 2x3 | | | | 61.7 | 260.22 | 19.8 |
| LH4034-SS | BL2034SS | | 3x4 | | | | 81.61 | 389.64 | 27.7 |
| LH4044-SS | BL2044SS | 63.5 | 4x4 | 60.33 | 9.91 | 23.81 | 91.57 | 520.44 | 31.6 |
| LH4046-SS | BL2046SS | | 4x6 | | | | 111.48 | 520.44 | 39.5 |
| LH4066-SS | BL2066SS | | 6x6 | | | | 131.39 | 780.66 | 47.7 |
| LH4088-SS | BL2088SS | | 8x8 | | | | 171.22 | 1040.88 | 63.2 |

LL series

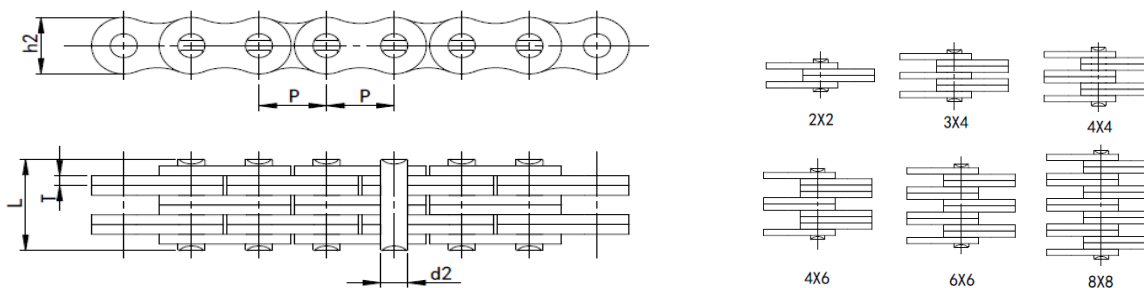


| ZMIE Chain No. | Chain lacing | Plate depth | Plate thickness | Pin diameter | Pin length | Ultimate tensile strength | Weight per meter | |
|----------------|--------------|-------------|-----------------|--------------|------------|---------------------------|------------------|------|
| | | h2 max | T max | d2 max | L max | Q min | q | |
| | | mm | mm | mm | mm | KN | kg/m | |
| LL0822 | | | | | 7.6 | 10.68 | 0.35 | |
| LL0844 | 12.7 | 2x2 | 10.2 | 1.3 | 4.45 | 13 | 18.66 | 0.69 |
| LL0866 | | | | | 18.2 | 26.7 | 1 | |
| LL0888 | | | | | 23.5 | 37.32 | 1.33 | |
| LL1022 | 15.9 | 2x2 | 13.7 | 1.6 | 5.1 | 9.2 | 13.38 | 0.5 |
| LL1044 | | | | | | | 26.7 | 1.1 |
| LL1066 | | | | | | | 40.02 | 1.6 |
| LL1088 | | | | | | | 53.4 | 2.1 |
| LL1222 | | | | | 10.4 | 17.34 | 0.73 | |
| LL1244 | 19.05 | 2x2 | 16 | 1.85 | 5.72 | 17.9 | 34.68 | 1.44 |
| LL1266 | | | | | 25.4 | 52.02 | 2.15 | |
| LL1288 | | | | | 32.9 | 69.36 | 2.84 | |

| | | | | | | | | |
|--------|-------|-----|-------|-----|-------|------|-------|------|
| LL1622 | 25.4 | 2x2 | 21.0 | 3.1 | 8.3 | 17.2 | 58.6 | 1.5 |
| LL1644 | | | | | | | 86.4 | 2.9 |
| LL1666 | | | | | | | 120 | 4.3 |
| LL1688 | | | | | | | 172.8 | 5.7 |
| LL2022 | | | | | | 20.1 | 57 | 2.33 |
| LL2044 | 31.75 | 2x2 | 26.4 | 3.7 | 10.19 | 33.8 | 114 | 4.4 |
| LL2066 | | | | | | | 171 | 6.79 |
| LL2088 | | | | | | | 228 | 8.75 |
| LL2422 | | | | | | | 102 | 4.5 |
| LL2444 | 38.1 | 2x2 | 33.4 | 5.0 | 14.6 | 28.4 | 204 | 8.2 |
| LL2466 | | | | | | | 306 | 12.2 |
| LL2488 | | | | | | | 408 | 16.3 |
| LL2822 | | | | | | | | |
| LL2844 | 44.45 | 2x2 | 37.08 | 6 | 15.9 | 56.4 | 240 | 9.9 |
| LL2866 | | | | | | | 360 | 14.6 |
| LL2888 | | | | | | | 480 | 19.4 |
| LL3222 | | | | | | | 156 | 5.8 |
| LL3244 | 50.8 | 2x2 | 42.0 | 6.0 | 17.8 | 33.2 | 312 | 11.4 |
| LL3266 | | | | | | | 468 | 16.9 |
| LL3288 | | | | | | | 630 | 24.0 |

| | | | | | | | | |
|--------|------|-----|-------|------|-------|-------|-------|------|
| LL4022 | | | | | | 44.7 | 216 | 10.3 |
| LL4044 | 63.5 | 2x2 | 52.76 | 8.25 | 22.89 | 77.9 | 468 | 20 |
| LL4066 | | | | | | 111.1 | 648 | 29.5 |
| LL4088 | | | | | | 145.5 | 936 | 39.1 |
| LL4822 | 76.2 | 2x2 | 63.9 | 10.3 | 29.2 | 56.1 | 336 | 18.5 |
| LL4844 | | | | | | | 672 | 35.7 |
| LL4866 | | | | | | | 700.8 | 53.0 |
| LL4888 | | | | | | | 1344 | 70.4 |

AL series



| ZMIE Chain No. | | Chain lacing | Plate depth | Plate thickness | Pin diameter | Pin length | Ultimate tensile strength | Weight per meter |
|-------------------|--------|--------------|-------------|-----------------|--------------|------------|---------------------------|------------------|
| | | | h2 max | T max | d2 max | L max | Q min | q |
| | | | mm | mm | mm | mm | KN | kg/m |
| AL322 | 9.5 | 2X2 | 7.7 | 1.3 | 3.6 | 6.8 | 5.4 | 0.23 |
| AL422 | 12.7 | 2X2 | 10.4 | 1.5 | 4.0 | 7.9 | 8.46 | 0.4 |
| AL444 | | | | | | | 16.92 | 0.7 |
| AL466 | | | | | | | 25.38 | 1.1 |
| AL522 | 15.875 | 2X2 | 12.8 | 2.063 | 5.08 | 10.3 | 13.2 | 0.61 |
| AL534 | | 3X4 | | | | 17 | 19.8 | 1.1 |
| AL544 | | 4X4 | | | | 18.9 | 26.4 | 1.19 |
| AL566 | | 6X6 | | | | 26.9 | 39.6 | 1.79 |

| | | | | | | | | |
|--------|------|-----|------|------|-------|-------|--------|-------|
| AL622 | | | | | | | 22.2 | 0.9 |
| AL644 | 19.1 | 2X2 | 15.6 | 2.4 | 5.9 | 12.4 | 38.4 | 1.7 |
| AL666 | | | | | | | 60.6 | 2.5 |
| AL822 | | 2X2 | | | | 16 | 34.02 | 1.54 |
| AL844 | 25.4 | 4X4 | 20.5 | 3.25 | 7.92 | 29.4 | 68.04 | 3 |
| AL866 | | 6X6 | | | | 42.5 | 102 | 4.46 |
| AL1022 | | | | | | | 53 | 2.4 |
| AL1044 | 31.8 | 2X2 | 25.6 | 4.0 | 9.5 | 19.6 | 106.2 | 4.7 |
| AL1066 | | | | | | | 159 | 7.0 |
| AL1222 | | 2X2 | | | | 24.3 | 76.2 | 3.65 |
| AL1244 | 38.1 | 4X4 | 30.5 | 4.8 | 11.1 | 43.8 | 152.4 | 7.05 |
| AL1266 | | 6X6 | | | | 63 | 228.6 | 10.44 |
| AL1444 | 44.5 | 4X4 | 36.4 | 5.6 | 12.6 | 51.3 | 196.62 | 10.3 |
| AL1466 | | | | | | | 335.4 | 15.2 |
| AL1644 | 50.8 | 4X4 | 41.6 | 6.4 | 14.21 | 58.06 | 282.6 | 12.98 |
| AL1666 | | 6X6 | | | | 84.46 | 423.6 | 19.41 |