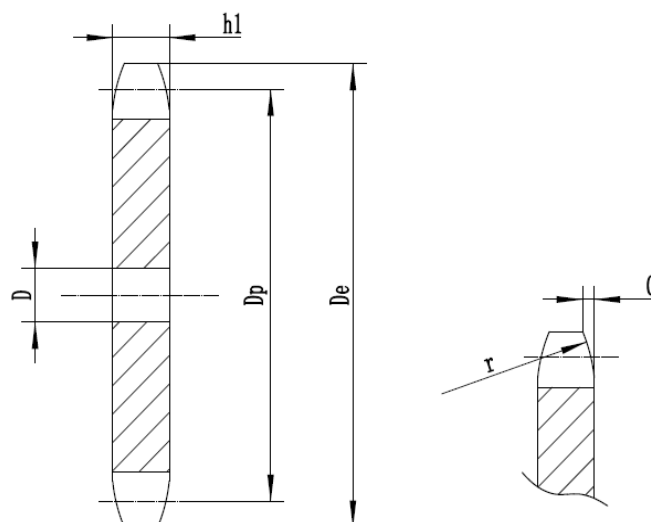


P50

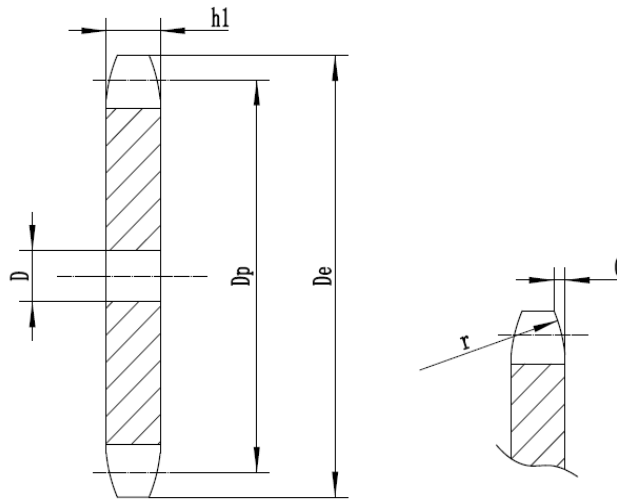


Pitch	50	50
Roller ϕ	25	31
Inner width	11.5	15
r	50	50
C	3	3
h1	10.5	13.5

Z	P50-R25			Z	P50-R31		
	De	Dp	D		De	Dp	D
	mm	mm	mm		mm	mm	mm
6	121	100	20	6	120	100	20
7	136	115.24	20	7	135	115.24	20
8	151.5	130.65	20	8	150.5	130.65	20
9	167	146.2	20	9	166	146.2	20
10	183	161.8	25	10	182	161.8	25
11	198.5	177.5	25	11	197.5	177.5	25
12	214	193.2	25	12	213	193.2	25

13	230	208.95	25	13	229	208.95	25
14	245.5	224.7	25	14	244.5	224.7	25
15	261.5	240.45	25	15	260.5	240.45	25
16	277.5	256.3	30	16	276.5	256.3	30
17	293	272.11	30	17	292	272.11	30
18	309	287.95	30	18	308	287.95	30
19	325	303.8	30	19	324	303.8	30
20	340.5	319.6	30	20	339.5	319.6	30
21	356.5	335.45	30	21	355.5	335.45	30
22	372.5	351.35	30	22	371.5	351.35	30
23	388	367.2	30	23	387	367.2	30
24	404	383.05	30	24	403	383.05	30
25	420	398.95	30	25	419	398.95	30
26	/	/	/	26	435	414.8	30
28	467.5	446.55	30	28	466.5	446.55	30
30	499.5	478.35	30	30	498.5	478.35	30
32	/	/	/	32	530	510.1	30
35	579	557.8	30	35	/	/	/
38	626.5	605.45	30	38	625.5	605.45	30

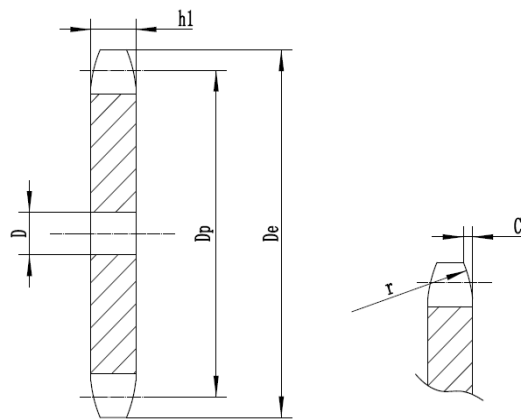
P50.8



Pitch	50.8
Roller ϕ	30
Inner width	10.5
r	50
C	3
h1	8.8

Z	P50.8-R30		
	De	Dp	D
	mm	mm	mm
8	149	132.74	20
10	182	164.39	20
12	214	196.27	25
14	247	228.29	25
16	279	260.39	30

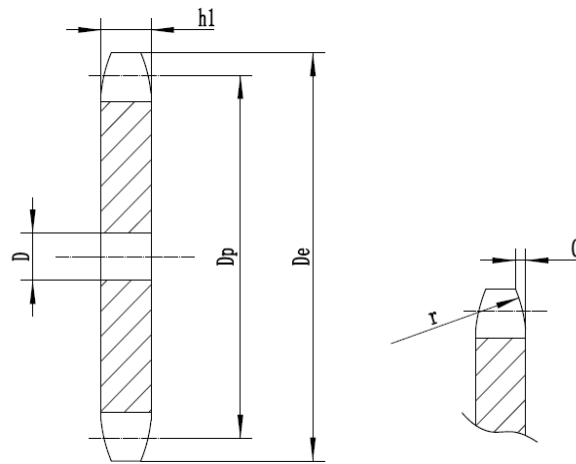
P75



Pitch	75	75
Roller ϕ	25	31
Inner width	11.5	15
r	50	50
C	3	3
h1	10.5	13.5

Z	P75-R25			Z	P75-R31		
	De	Dp	D		De	Dp	D
	mm	mm	mm		mm	mm	mm
6	/	/	/	6	168	150	25
8	211	195.98	25	8	215	195.98	25
9	/	/	/	9	238	219.3	25
10	258	242.7	25	10	261	242.7	30
				11	286	266.25	30
				12	309	289.8	30
				13	333	313.42	30
				14	357	337.05	30
				15	380	360.73	30
				16	404	384.45	30
				20	499	479.4	30
				21	523	503.17	30

P100



Pitch	100	100
Roller ϕ	31	40
Inner width	15	22
r	50	50
C	3	3
h1	13.5	20

Z	P100-R31			Z	P100-R40		
	De	Dp	D		De	Dp	D
	mm	mm	mm		mm	mm	mm
6	218	200	25	6	220	200	25
7	249	230.48	25	7	251	230.48	25
8	280	261.31	30	8	283	261.31	30
9	311	292.4	30	9	314	292.4	30
10	342	323.61	30	10	345	323.61	30
11	375	354.95	30	11	378	354.95	30
12	406	386.4	30	12	409	386.4	30
13	437	417.9	30	13	441	417.9	30
14	469	449.4	30				
15	500	480.97	30				
16	532	512.6	30				