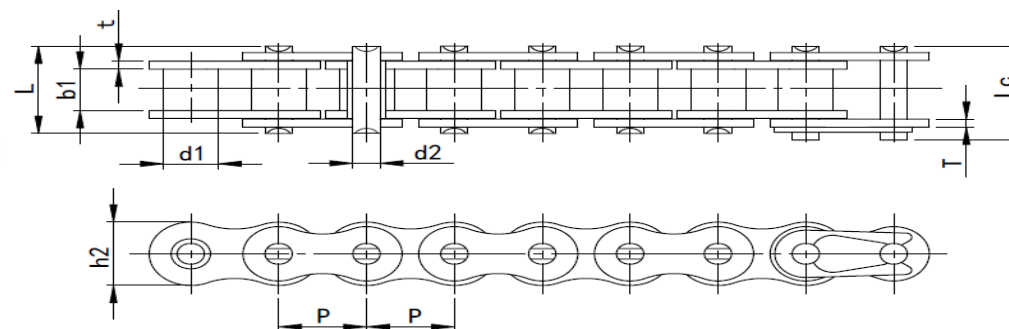


Short pitch standard roller chain

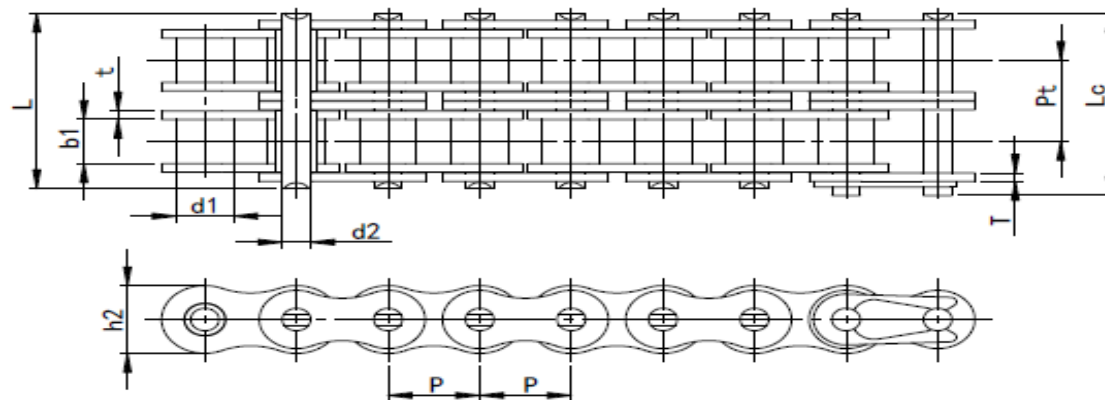
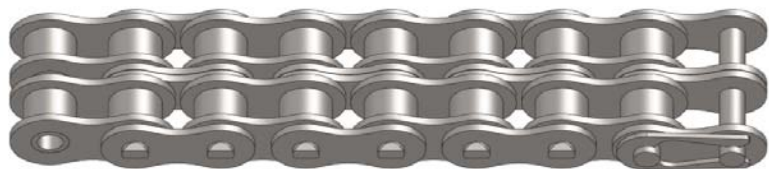
Simplex chain



ZMIE Chain No.		Pitch	Roller diameter	Width between inner plates	Pin diameter	Pin length		Inner plate depth	Plate thickness	Ultimate tensile strength	Weight per meter
		P	d1 max	b1 min	d2 max	L max	Lc max	h2 max	T max	Q min	q
		mm	mm	mm	mm	mm	mm	mm	mm	KN	kg/m
04CSS-1	25SS-1	6.35	3.3	3.18	2.31	7.9	8.4	6	0.8	2.1	0.15
06CSS-1	35SS-1	9.525	5.08	4.77	3.58	12.4	13.17	9	1.3	4.74	0.33
085SS-1	41SS-1	12.7	7.77	6.25	3.58	13.75	15	9.91	1.3	4	0.41
08ASS-1	40SS-1	12.7	7.95	7.85	3.96	16.6	17.8	12	1.5	8.46	0.62
10ASS-1	50SS-1	15.875	10.16	9.4	5.08	20.7	22.2	15.09	2.03	13.32	1.02
12ASS-1	60SS-1	19.05	11.91	12.57	5.94	25.9	27.7	18	2.42	19.08	1.5
16ASS-1	80SS-1	25.4	15.88	15.75	7.92	32.7	35	24	3.25	34.02	2.6
20ASS-1	100SS-1	31.75	19.05	18.9	9.53	40.4	44.7	30	4	53.1	3.91

24ASS-1	120SS-1	38.1	22.23	25.22	11.1	50.3	54.3	35.7	4.8	76.2	5.62
28ASS-1	140SS-1	44.45	25.4	25.22	12.7	54.4	59	41	5.6	103.44	7.5
32ASS-1	160SS-1	50.8	28.58	31.55	14.27	64.8	69.6	47.8	6.4	136.08	10.1
36ASS-1	180SS-1	57.15	35.71	35.48	17.46	72.8	78.6	53.6	7.2	168.12	13.45
40ASS-1	200SS-1	63.5	39.68	37.85	19.85	80.3	87.2	60	8	212.28	16.15
48ASS-1	240SS-1	76.2	47.63	47.35	23.81	95.5	103	72.39	9.5	306.18	23.2
04BSS-1		6	4	2.8	1.85	6.8	7.8	5	0.6	2.1	0.11
05BSS-1		8	5	3	2.31	8.2	8.9	7.1	0.8	3	0.2
06BSS-1		9.525	6.35	5.72	3.28	13.15	14.1	8.2	1.3	5.4	0.41
08BSS-1		12.7	8.51	7.75	4.45	16.7	18.2	11.8	1.6	10.8	0.69
10BSS-1		15.875	10.16	9.65	5.08	19.5	20.9	14.7	1.7	13.44	0.93
12BSS-1		19.05	12.07	11.68	5.72	22.5	24.2	16	1.85	17.4	1.15
16BSS-1		25.4	15.88	17.02	8.28	36.1	37.4	21	4.15/3.1	36	2.71
20BSS-1		31.75	19.05	19.56	10.19	41.3	45	26.4	4.5/3.5	57	3.7
24BSS-1		38.1	25.4	25.4	14.63	53.4	57.8	33.2	6.0/4.8	96	7.1
28BSS-1		44.45	27.94	30.99	15.9	65.1	69.5	36.7	7.5/6.0	120	8.5
32BSS-1		50.8	29.21	30.99	17.81	66	71	42	7.0/6.0	150	10.25
40BSS-1		63.5	39.37	38.1	22.89	82.2	89.2	52.96	8.5/8.0	213	16.35
48BSS-1		76.2	48.26	45.72	29.24	99.1	107	63.8	12.0/10.0	336	25

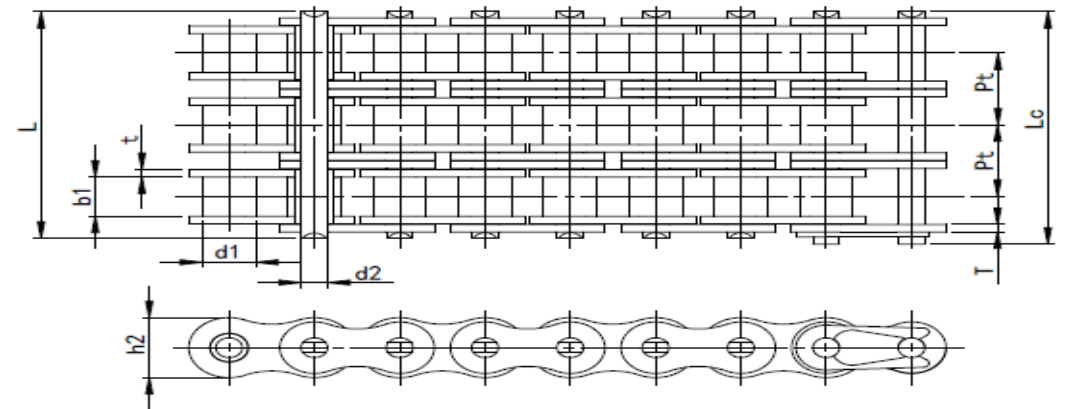
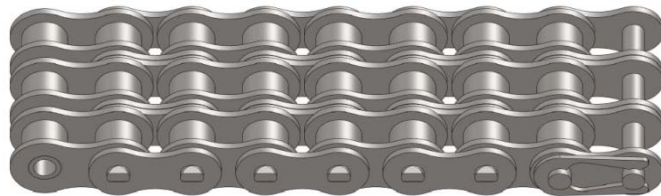
Duplex chain



ZMIE Chain No.		Pitch	Roller diameter	Width between inner plates	Pin diameter	Pin length		Inner plate depth	Plate thickness	Transverse pitch	Ultimate tensile strength	Weight per meter
		P	d1 max	b1 min	d2 max	L max	Lc max	h2 max	T max	Pt	Q min	q
		mm	mm	mm	mm	mm	mm	mm	mm	mm	KN	kg/m
04CSS-2	25SS-2	6.35	3.3	3.18	2.31	14.5	15	6	0.8	6.4	4.2	0.28
06CSS-2	35SS-2	9.525	5.08	4.77	3.58	22.5	23.3	9	1.3	10.13	9.48	0.63
085SS-2	41SS-2	12.7	7.77	6.25	3.58	25.7	26.9	9.91	1.3	11.95	8	0.81
08ASS-2	40SS-2	12.7	7.95	7.85	3.96	31	32.2	12	1.5	14.38	16.92	1.12
10ASS-2	50SS-2	15.875	10.16	9.4	5.08	38.9	40.4	15.09	2.03	18.11	26.46	2
12ASS-2	60SS-2	19.05	11.91	12.57	5.94	48.8	50.5	18	2.42	22.78	38.16	2.92
16ASS-2	80SS-2	25.4	15.88	15.75	7.92	62.7	64.3	24	3.25	29.29	68.04	5.15

20ASS-2	100SS-2	31.75	19.05	18.9	9.53	76	80.5	30	4	35.76	106.2	7.8
24ASS-2	120SS-2	38.1	22.23	25.22	11.1	95.8	99.7	35.7	4.8	45.44	152.4	11.7
28ASS-2	140SS-2	44.45	25.4	25.22	12.7	103.3	107.9	41	5.6	48.87	206.88	15.14
32ASS-2	160SS-2	50.8	28.58	31.55	14.27	123.3	128.1	47.8	6.4	58.55	272.16	20.14
36ASS-2	180SS-2	57.15	35.71	35.48	17.46	138.6	144.4	53.6	7.2	65.84	336.3	29.22
40ASS-2	200SS-2	63.5	39.68	37.85	19.85	151.9	158.8	60	8	71.55	424.56	32.24
48ASS-2	240SS-2	76.2	47.63	47.35	23.81	183.4	190.8	72.39	9.5	87.83	612.36	45.23
05BSS-2		8	5	3	2.31	13.9	14.5	7.1	0.8	5.64	4.68	0.33
06BSS-2		9.525	6.35	5.72	3.28	23.4	24.4	8.2	1.3	10.24	10.14	0.77
08BSS-2		12.7	8.51	7.75	4.45	31.2	32.2	11.8	1.6	13.92	19.2	1.34
10BSS-2		15.875	10.16	9.65	5.08	36.1	37.5	14.7	1.7	16.59	26.7	1.84
12BSS-2		19.05	12.07	11.68	5.72	42	43.6	16	1.85	19.46	34.68	2.31
16BSS-2		25.4	15.88	17.02	8.28	68	69.3	21	4.15/3.1	31.88	63.6	5.42
20BSS-2		31.75	19.05	19.56	10.19	77.8	81.5	26.4	4.5/3.5	36.45	102	7.2
24BSS-2		38.1	25.4	25.4	14.63	101.7	106.2	33.2	6.0/4.8	48.36	168	13.4
28BSS-2		44.45	27.94	30.99	15.9	124.6	129.1	36.7	7.5/6.0	59.56	216	16.6
32BSS-2		50.8	29.21	30.99	17.81	124.6	129.6	42	7.0/6.0	58.55	270	21
40BSS-2		63.5	39.37	38.1	22.89	154.5	161.5	52.96	8.5/8.0	72.29	378	32
48BSS-2		76.2	48.26	45.72	29.24	190.4	198.2	63.8	12.0/10.0	91.21	600	50

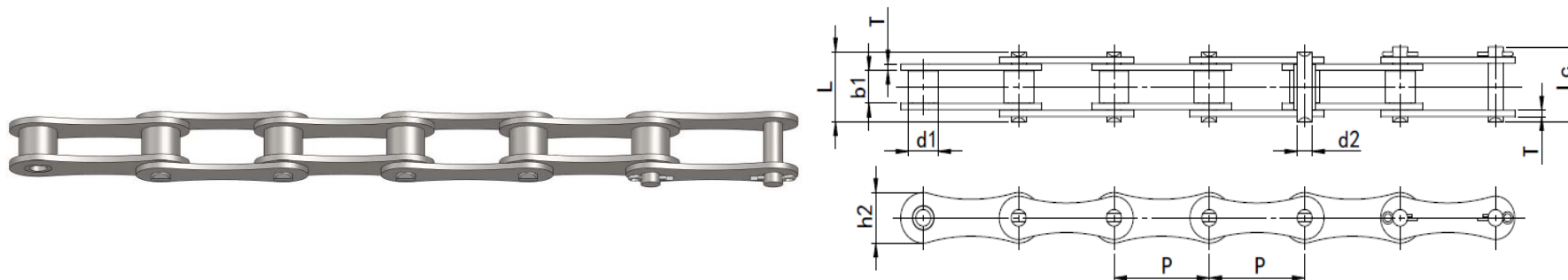
Triplex chain



ZMIE Chain No.		Pitch	Roller diameter	Width between inner plates	Pin diameter	Pin length		Inner plate depth	Plate thickness	Transverse pitch	Ultimate tensile strength	Weight per meter
		P	d1 max	b1 min	d2 max	L max	Lc max	h2 max	T max	Pt	Q min	q
		mm	mm	mm	mm	mm	mm	mm	mm	mm	KN	kg/m
04CSS-3	25SS-3	6.35	3.3	3.18	2.31	21	21.5	6	0.8	6.4	6.3	0.44
06CSS-3	35SS-3	9.525	5.08	4.77	3.58	32.7	33.5	9	1.3	10.13	14.22	1.05
08ASS-3	40SS-3	12.7	7.95	7.85	3.96	45.4	46.6	12	1.5	14.38	25.38	1.9
10ASS-3	50SS-3	15.875	10.16	9.4	5.08	57	58.5	15.09	2.03	18.11	39.96	3.09
12ASS-3	60SS-3	19.05	11.91	12.57	5.94	71.5	73.3	18	2.42	22.78	57.24	4.54
16ASS-3	80SS-3	25.4	15.88	15.75	7.92	91.7	93.6	24	3.25	29.29	102.06	7.89
20ASS-3	100SS-3	31.75	19.05	18.9	9.53	112.2	116.3	30	4	35.76	159.3	11.77

24ASS-3	120SS-3	38.1	22.23	25.22	11.1	141.4	145.2	35.7	4.8	45.44	228.6	17.53
28ASS-3	140SS-3	44.45	25.4	25.22	12.7	152.2	156.8	41	5.6	48.87	342.72	22.2
32ASS-3	160SS-3	50.8	28.58	31.55	14.27	181.8	186.6	47.8	6.4	58.55	408.24	30.02
36ASS-3	180SS-3	57.15	35.71	35.48	17.46	204.4	210.2	53.6	7.2	65.84	504.42	38.22
40ASS-3	200SS-3	63.5	39.68	37.85	19.85	223.5	230.4	60	8	71.55	636.84	49.03
48ASS-3	240SS-3	76.2	47.63	47.35	23.81	271.3	278.6	72.39	9.5	87.83	918.54	71.6
05BSS-3		8	5	3	2.31	19.5	20.2	7.1	0.8	5.64	6.66	0.48
06BSS-3		9.525	6.35	5.72	3.28	33.5	34.6	8.2	1.3	10.24	14.94	1.16
08BSS-3		12.7	8.51	7.75	4.45	45.1	46.1	11.8	1.6	13.92	28.5	2.03
10BSS-3		15.875	10.16	9.65	5.08	52.7	54.1	14.7	1.7	16.59	40.02	2.77
12BSS-3		19.05	12.07	11.68	5.72	61.5	63.1	16	1.85	19.46	52.02	3.46
16BSS-3		25.4	15.88	17.02	8.28	99.8	101.2	21	4.15/3.1	31.88	96	8.13
20BSS-3		31.75	19.05	19.56	10.19	114.2	117.9	26.4	4.5/3.5	36.45	150	10.82
24BSS-3		38.1	25.4	25.4	14.63	150.1	154.6	33.2	6.0/4.8	48.36	255	20.1
28BSS-3		44.45	27.94	30.99	15.9	184.2	188.7	36.7	7.5/6.0	59.56	318	24.92
32BSS-3		50.8	29.21	30.99	17.81	183.2	188.2	42	7.0/6.0	58.55	402	31.56
40BSS-3		63.5	39.37	38.1	22.89	226.8	233.8	52.96	8.5/8.0	72.29	570	48.1
48BSS-3		76.2	48.26	45.72	29.24	281.6	289.4	63.8	12.0/10.0	91.21	900	75

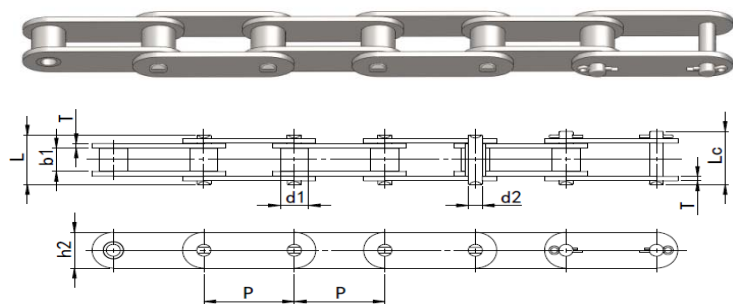
Double pitch roller chain



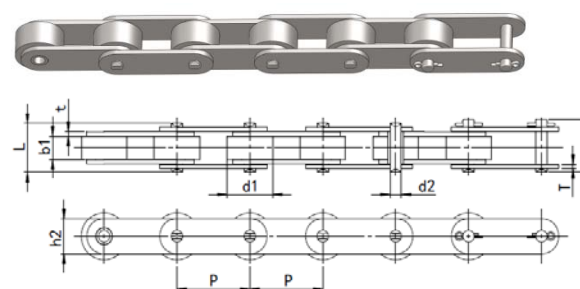
ZMIE Chain No.		Pitch	Roller diameter	Width between inner plates	Pin diameter	Pin length		Inner plate depth	Plate thickness	Ultimate tensile strength	Weight per meter
		P	d1 max	b1 min	d2 max	L max	Lc max	h2 max	t/T max	Q min	q
		mm	mm	mm	mm	mm	mm	mm	mm	KN	kg/m
208A-SS	2040SS	25.4	8.0	7.9	4.0	16.6	17.8	12.0	1.5	8.5	0.4
208B-SS		25.4	8.5	7.8	4.5	16.7	18.2	11.8	1.6	10.8	0.5
210A-SS	2050SS	31.8	10.2	9.4	5.1	20.7	22.2	15.0	2.0	13.3	0.7
210B-SS		31.8	10.2	9.7	5.1	19.5	20.9	14.7	1.7	13.4	0.7
212A-SS	2060SS	38.1	11.9	12.6	5.9	25.9	27.7	18.0	2.4	19.1	1.0
212B-SS		38.1	12.1	11.7	5.7	22.5	25.2	16.0	1.9	17.4	0.8
216A-SS	2080SS	50.8	15.9	15.8	7.9	32.7	36.5	24.0	3.3	34.0	1.7
216AH-SS		50.8	15.9	15.8	7.9	36.2	39.4	24.0	4.0	34.0	2.2

ZMIE Chain No.	Pitch	Roller diameter	Width between inner plates	Pin diameter	Pin length		Inner plate depth	Plate thickness	Ultimate tensile strength	Weight per meter	
	P	d1 max	b1 min	d2 max	L max	Lc max	h2 max	t/T max	Q min	q	
	mm	mm	mm	mm	mm	mm	mm	mm	KN	kg/m	
216B-SS	50.8	15.9	17.0	8.3	36.1	39.1	21.0	4.15/3.1	36.0	1.8	
220A-SS	2100SS	63.5	19.1	18.9	9.5	40.4	44.7	30.0	4.0	53.1	2.6
220B-SS		63.5	19.1	19.6	10.2	41.3	45	26.4	4.5/3.5	57.0	2.6
224A-SS	2120SS	76.2	22.2	25.2	11.1	50.3	54.3	35.7	4.8	76.2	4.1
224B-SS		76.2	25.4	25.4	14.6	53.4	57.8	33.2	6.0/4.8	96.0	4.7
228B-SS		88.9	27.9	31.0	15.9	65.1	69.5	36.7	7.5/6.0	120.0	6.2
232B-SS		101.6	29.2	31.0	17.8	66.0	71	42.0	7.0/6.0	150.0	6.7

Small roller type



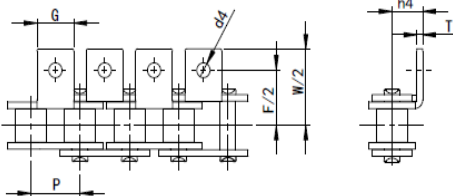
Large roller type



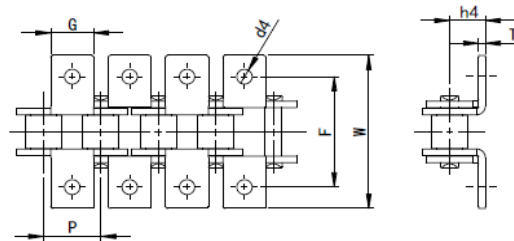
Roller chain attachments

Short pitch roller chain attachments

A 1

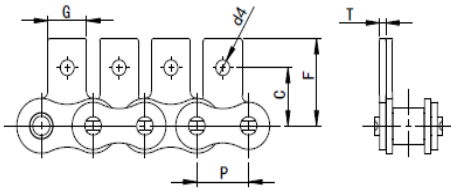
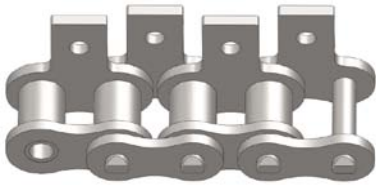


K 1

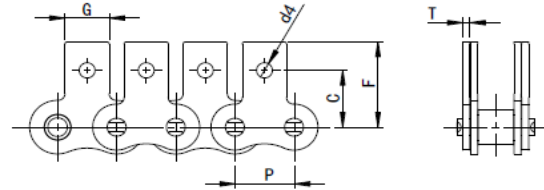
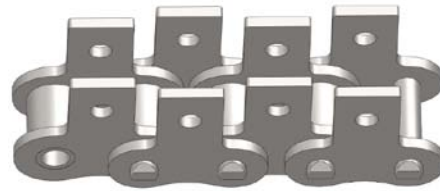


Z M I E Chain No.	P	G	F	W	T	h 4	d 4
	m m	m m	m m	m m	m m	m m	
08 A 40	12.7	9.5	25.4	35.2	1.5	7.9	3.4
10 A 50	15.875	12.7	31.75	46.2	2.03	10.3	5.5
12 A 60	19.05	15.9	38.1	55.6	2.42	11.9	5.5
16 A 80	25.4	19.1	50.8	64.8	3.25	15.9	6.8
20 A 100	31.75	25.4	63.5	87.3	4	19.8	9.2
24 A 120	38.1	28.6	76.2	108.5	4.8	23.0	9.8
28 A 140	44.45	34.9	88.9	123.0	5.6	28.6	11.4
32 A 160	50.8	38.1	101.6	142.8	6.4	31.8	13.1
06 B	9.525	8.0	19.04	27.0	1.3	6.5	3.5
08 B	12.7	9.5	25.4	36.4	1.6	8.9	4.5
10 B	15.875	14.3	31.75	44.6	1.7	10.3	5.3
12 B	19.05	16.0	38.1	52.4	1.85	13.5	6.4
16 B	25.4	19.1	50.8	72.6	3.1	15.9	6.4

S A 1

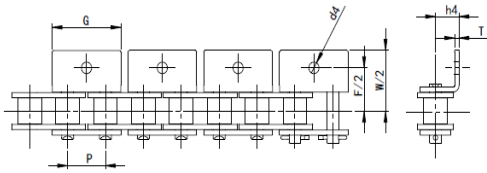
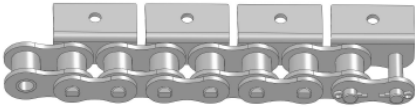


S K 1

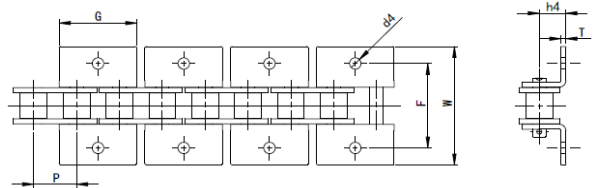


Z M I E C h a i n N o .		P	G	C	F	T	d 4
		m m	m m	m m	m m	m m	m m
08A	40	12.7	9.5	12.7	19.1	1.5	3.4
10A	50	15.875	12.7	15.9	25.3	2.03	5.5
12A	60	19.05	15.9	18.3	29.3	2.42	5.5
16A	80	25.4	19.1	24.6	34.7	3.25	6.8
20A	100	31.75	25.4	31.8	43.3	4	9.2
24A	120	38.1	28.6	36.5	51.6	4.8	9.8
28A	140	44.45	34.9	44.5	62.0	5.6	11.4
32A	160	50.8	38.1	50.8	69.9	6.4	13.1
06B		9.525	8.0	9.52	13.5	1.3	3.5
08B		12.7	9.5	13.35	18.9	1.6	4.3
10B		15.875	14.3	16.5	23.0	1.7	5.3
12B		19.05	16.0	21.45	28.6	1.85	6.4
16B		25.4	19.1	23.15	34.0	3.1	6.4

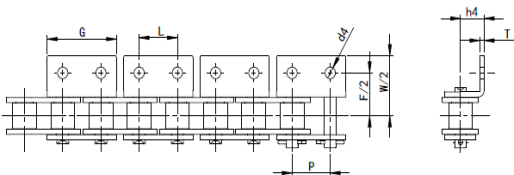
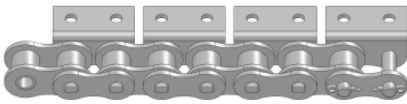
W A 1



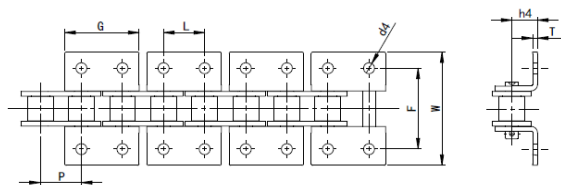
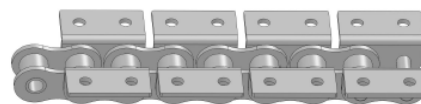
W K 1



W A 2

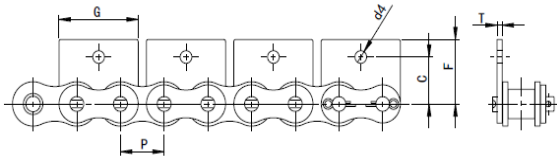
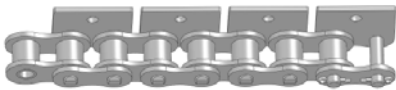


W K 2

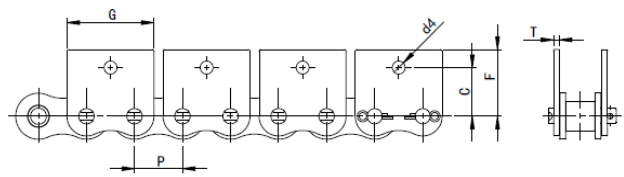
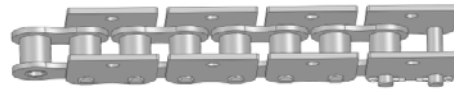


ZMIE Chain No.		P	G	L	F	W	T	h4	d4
		mm	mm	mm	mm	mm	mm	mm	mm
08A	40	12.7	23.0	12.7	25.4	35.6	1.5	7.9	3.4
10A	50	15.875	28.8	15.875	31.8	46.8	2.0	10.3	5.5
12A	60	19.05	34.7	19.05	38.1	56.4	2.4	11.9	5.5
16A	80	25.4	45.9	25.4	50.8	73.2	3.3	15.9	6.8
20A	100	31.75	57.7	31.75	63.5	89.8	4.0	19.8	9.2
08B		12.7	24.0	12.7	25.4	36.4	1.6	8.9	4.3
10B		15.875	29.6	15.875	31.8	44.6	1.7	10.31	5.3
12B		19.05	34.1	19.05	38.1	52.4	1.9	13.46	6.4
16B		25.4	46.4	25.4	50.8	72.6	3.1	15.88	6.4

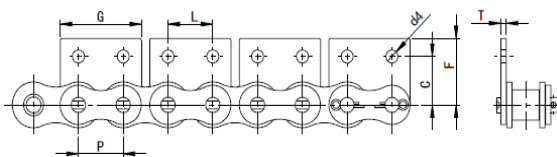
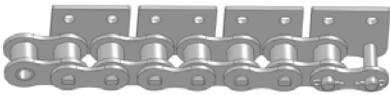
W S A 1



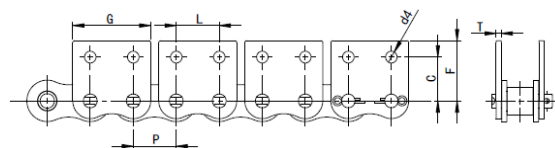
W S K 1



W S A 2



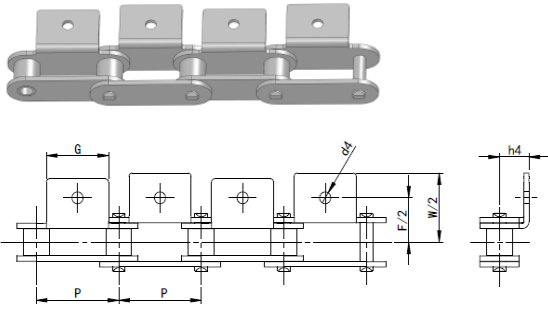
W S K 2



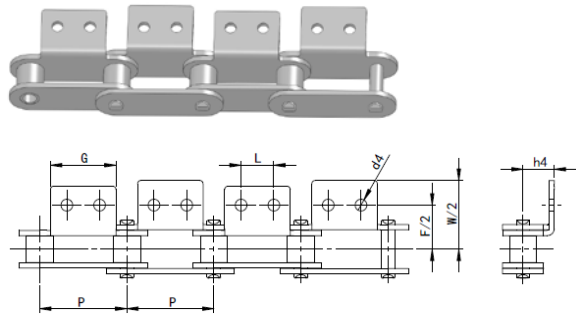
Z M I E Chain No.		P	G	L	C	F	T	d 4
		mm	mm	mm	mm	mm	mm	mm
08A	40	12.7	23.0	12.7	12.7	17.4	1.5	3.4
10A	50	15.875	28.8	15.875	15.9	23.05	2.0	5.5
12A	60	19.05	34.7	19.05	18.3	26.86	2.4	5.5
16A	80	25.4	45.9	25.4	24.6	35.45	3.3	6.8
20A	100	31.75	57.7	31.75	31.8	44	4.0	9.2
08B		12.7	23.3	12.7	13.4	18.9	1.6	4.5
10B		15.875	29.6	15.875	16.5	22.95	1.7	5.3
12B		19.05	34.1	19.05	21.5	28.6	1.9	6.4
16B		25.4	46.4	25.4	23.2	34	3.1	6.4

Double pitch roller chain attachments

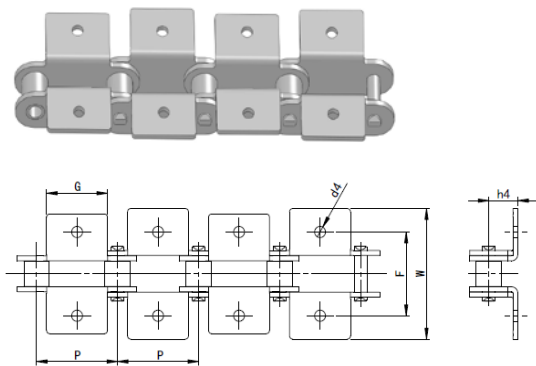
A 1



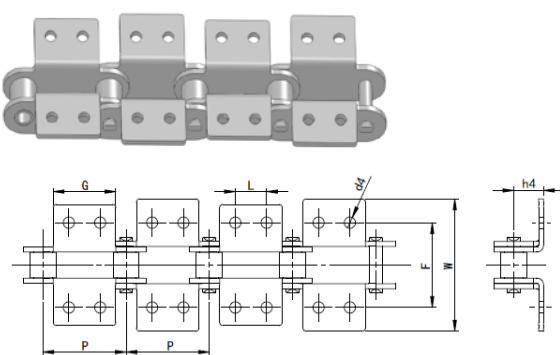
A 2



K 1



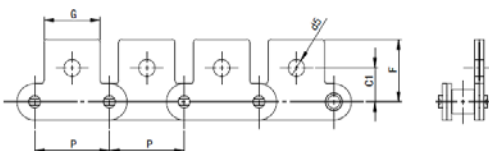
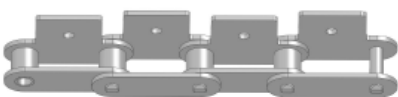
K 2



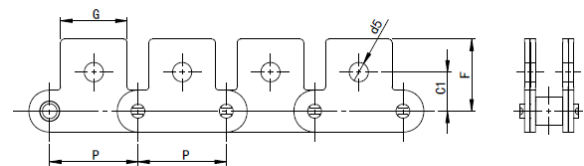
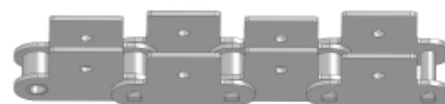
Z M I E Chain No.	P	G	L	F	W	h 4	d 4
	m m	m m	m m	m m	m m	m m	m m
C 208 A C 2040	25.4	19.1	9.5	25.4	39.6	9.1	3.4
C 208 A L C 2042							
C 208 B	25.4	23.2	12.7	25.4	39.6	9.1	4.5
C 208 B L							
C 210 A 2050	31.75	23.8	11.9	31.8	49	11.1	5.5
C 210 A L C 2052							
C 212 A C 2060	38.1	28.6	14.3	42.9	67.8	14.7	5.5
C 212 A L C 2062							
C 212 A H C 2060 H	38.1	28.6	14.3	42.9	67.8	14.7	5.5
C 212 A H L C 2062 H							
C 216 A C 2080	50.8	38.1	19.1	55.6	87.8	19.1	6.8
C 216 A L C 2082							

Z M I E C h a i n N o .	P	G	L	F	W	h 4	d 4
	m m	m m	m m	m m	m m	m m	m m
C 216 A H C 2080 H	50.8	38.1	19.1	55.6	87.8	19.1	6.8
C 216 A H L C 2082 H							
C 220 A C 2100	63.5	47.6	23.8	66.6	107.5	23.4	9.2
C 220 A L C 2102							
C 220 A H C 2100 H	63.5	47.6	23.8	66.6	107.5	23.4	9.2
C 220 A H L C 2102 H							
C 224 A C 2120	76.2	57.2	28.6	79.3	121.4	27.8	11
C 224 A L C 2122							
C 224 A H C 2120 H	76.2	57.2	28.6	79.3	121.4	27.8	11
C 224 A H L C 2122 H							
C 232 A C 2160	101.6	76.2	38.1	104.7	151.6	36.5	13.1
C 232 A L C 2162							
C 232 A H C 2160 H	101.6	76.2	38.1	104.7	151.6	36.5	13.1
C 232 A H L C 2162 H							

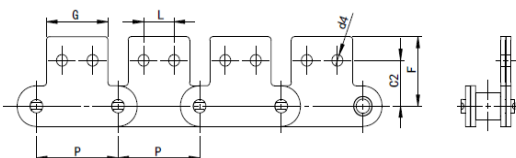
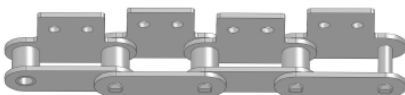
S A 1



S K 1



S A 2



S K 2

