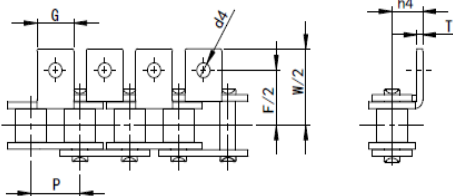
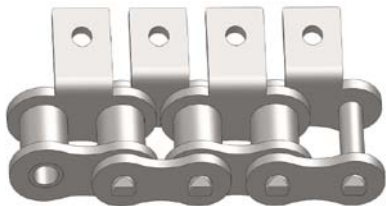


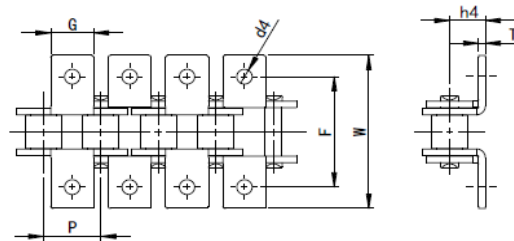
Roller chain attachments

Short pitch roller chain attachments

A 1

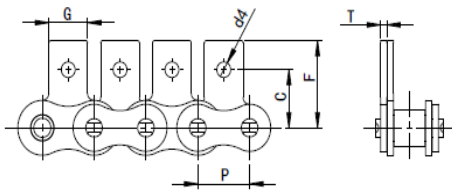
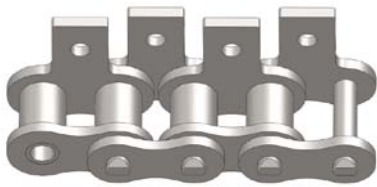


K 1

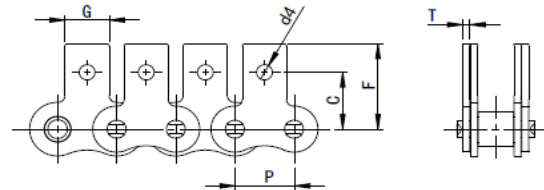
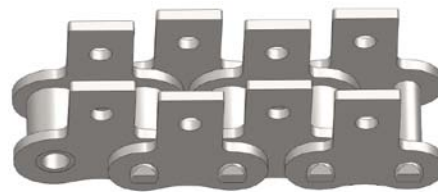


Z M I E Chain No.		P	G	F	W	T	h 4	d 4
		m m	m m	m m	m m	m m	m m	
08 A	40	12.7	9.5	25.4	35.2	1.5	7.9	3.4
10 A	50	15.875	12.7	31.75	46.2	2.03	10.3	5.5
12 A	60	19.05	15.9	38.1	55.6	2.42	11.9	5.5
16 A	80	25.4	19.1	50.8	64.8	3.25	15.9	6.8
20 A	100	31.75	25.4	63.5	87.3	4	19.8	9.2
24 A	120	38.1	28.6	76.2	108.5	4.8	23.0	9.8
28 A	140	44.45	34.9	88.9	123.0	5.6	28.6	11.4
32 A	160	50.8	38.1	101.6	142.8	6.4	31.8	13.1
06 B		9.525	8.0	19.04	27.0	1.3	6.5	3.5
08 B		12.7	9.5	25.4	36.4	1.6	8.9	4.5
10 B		15.875	14.3	31.75	44.6	1.7	10.3	5.3
12 B		19.05	16.0	38.1	52.4	1.85	13.5	6.4
16 B		25.4	19.1	50.8	72.6	3.1	15.9	6.4

S A 1

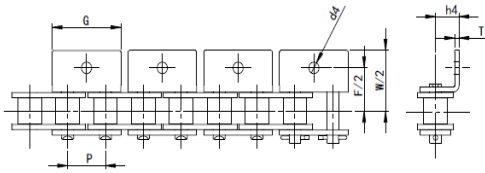
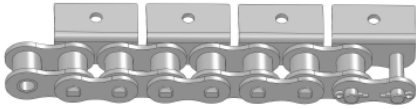


S K 1

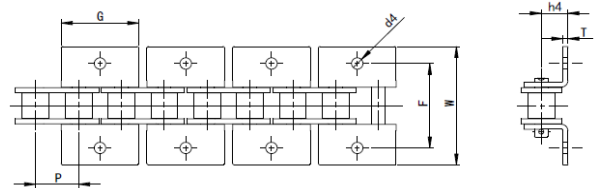


Z M I E C h a i n N o .		P	G	C	F	T	d 4
		m m	m m	m m	m m	m m	m m
08A	40	12.7	9.5	12.7	19.1	1.5	3.4
10A	50	15.875	12.7	15.9	25.3	2.03	5.5
12A	60	19.05	15.9	18.3	29.3	2.42	5.5
16A	80	25.4	19.1	24.6	34.7	3.25	6.8
20A	100	31.75	25.4	31.8	43.3	4	9.2
24A	120	38.1	28.6	36.5	51.6	4.8	9.8
28A	140	44.45	34.9	44.5	62.0	5.6	11.4
32A	160	50.8	38.1	50.8	69.9	6.4	13.1
06B		9.525	8.0	9.52	13.5	1.3	3.5
08B		12.7	9.5	13.35	18.9	1.6	4.3
10B		15.875	14.3	16.5	23.0	1.7	5.3
12B		19.05	16.0	21.45	28.6	1.85	6.4
16B		25.4	19.1	23.15	34.0	3.1	6.4

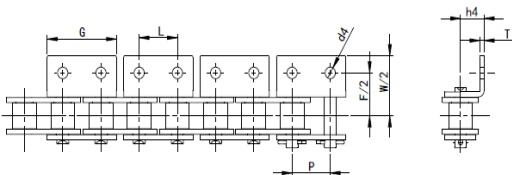
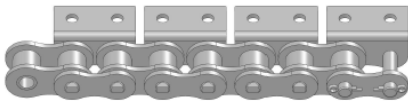
W A 1



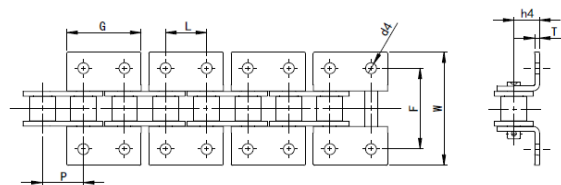
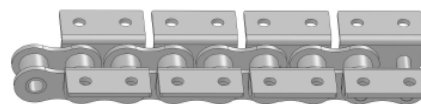
W K 1



W A 2

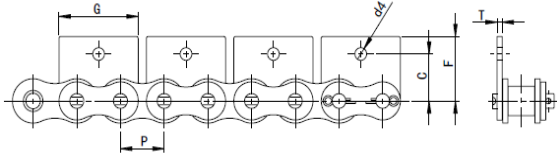
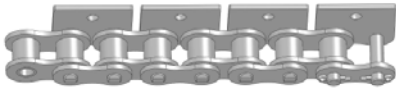


W K 2

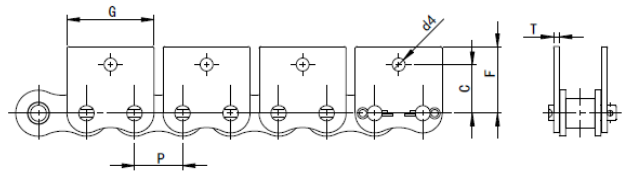
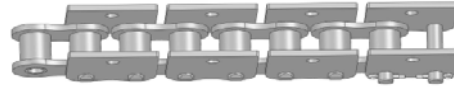


ZMIE Chain No.		P	G	L	F	W	T	h4	d4
		mm	mm	mm	mm	mm	mm	mm	mm
08A	40	12.7	23.0	12.7	25.4	35.6	1.5	7.9	3.4
10A	50	15.875	28.8	15.875	31.8	46.8	2.0	10.3	5.5
12A	60	19.05	34.7	19.05	38.1	56.4	2.4	11.9	5.5
16A	80	25.4	45.9	25.4	50.8	73.2	3.3	15.9	6.8
20A	100	31.75	57.7	31.75	63.5	89.8	4.0	19.8	9.2
08B		12.7	24.0	12.7	25.4	36.4	1.6	8.9	4.3
10B		15.875	29.6	15.875	31.8	44.6	1.7	10.31	5.3
12B		19.05	34.1	19.05	38.1	52.4	1.9	13.46	6.4
16B		25.4	46.4	25.4	50.8	72.6	3.1	15.88	6.4

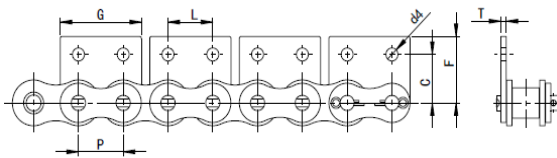
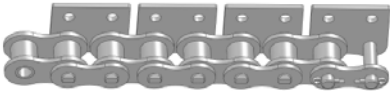
W S A 1



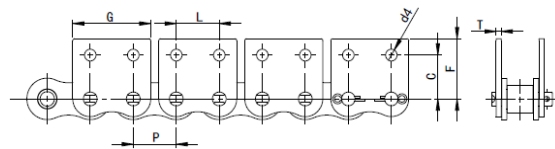
W S K 1



W S A 2



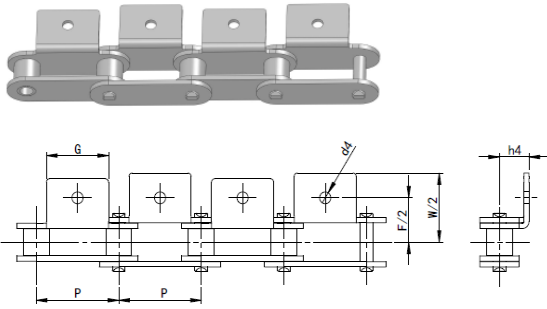
W S K 2



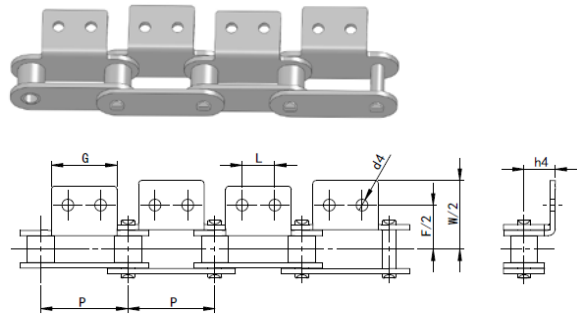
Z M I E Chain No.		P	G	L	C	F	T	d 4
		mm	mm	mm	mm	mm	mm	mm
08A	40	12.7	23.0	12.7	12.7	17.4	1.5	3.4
10A	50	15.875	28.8	15.875	15.9	23.05	2.0	5.5
12A	60	19.05	34.7	19.05	18.3	26.86	2.4	5.5
16A	80	25.4	45.9	25.4	24.6	35.45	3.3	6.8
20A	100	31.75	57.7	31.75	31.8	44	4.0	9.2
08B		12.7	23.3	12.7	13.4	18.9	1.6	4.5
10B		15.875	29.6	15.875	16.5	22.95	1.7	5.3
12B		19.05	34.1	19.05	21.5	28.6	1.9	6.4
16B		25.4	46.4	25.4	23.2	34	3.1	6.4

Double pitch roller chain attachments

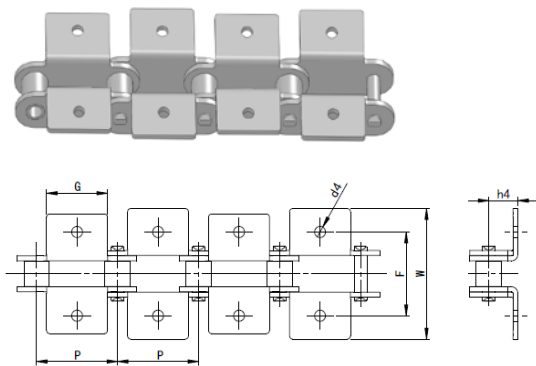
A 1



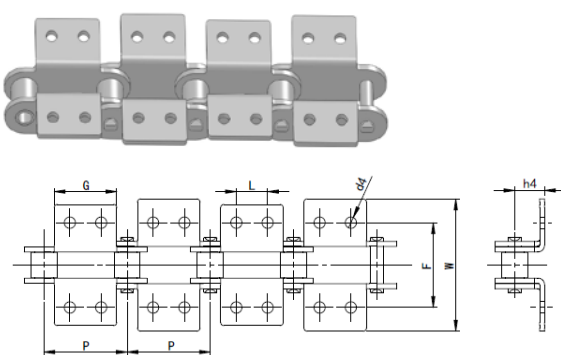
A 2



K 1



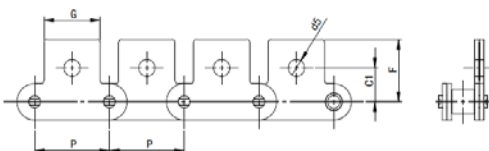
K 2



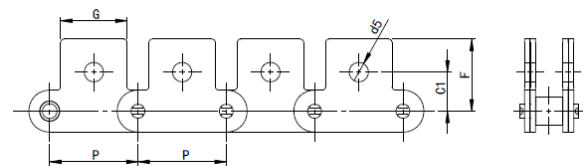
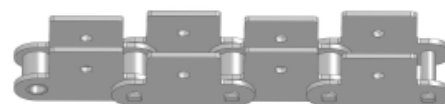
Z M I E Chain No.	P	G	L	F	W	h 4	d 4
	m m	m m	m m	m m	m m	m m	m m
C 208 A C 2040	25.4	19.1	9.5	25.4	39.6	9.1	3.4
C 208 A L C 2042							
C 208 B	25.4	23.2	12.7	25.4	39.6	9.1	4.5
C 208 B L							
C 210 A 2050	31.75	23.8	11.9	31.8	49	11.1	5.5
C 210 A L C 2052							
C 212 A C 2060	38.1	28.6	14.3	42.9	67.8	14.7	5.5
C 212 A L C 2062							
C 212 A H C 2060 H	38.1	28.6	14.3	42.9	67.8	14.7	5.5
C 212 A H L C 2062 H							
C 216 A C 2080	50.8	38.1	19.1	55.6	87.8	19.1	6.8
C 216 A L C 2082							

Z M I E C h a i n N o .	P	G	L	F	W	h 4	d 4
	m m	m m	m m	m m	m m	m m	m m
C 216 A H C 2080 H	50.8	38.1	19.1	55.6	87.8	19.1	6.8
C 216 A H L C 2082 H							
C 220 A C 2100	63.5	47.6	23.8	66.6	107.5	23.4	9.2
C 220 A L C 2102							
C 220 A H C 2100 H	63.5	47.6	23.8	66.6	107.5	23.4	9.2
C 220 A H L C 2102 H							
C 224 A C 2120	76.2	57.2	28.6	79.3	121.4	27.8	11
C 224 A L C 2122							
C 224 A H C 2120 H	76.2	57.2	28.6	79.3	121.4	27.8	11
C 224 A H L C 2122 H							
C 232 A C 2160	101.6	76.2	38.1	104.7	151.6	36.5	13.1
C 232 A L C 2162							
C 232 A H C 2160 H	101.6	76.2	38.1	104.7	151.6	36.5	13.1
C 232 A H L C 2162 H							

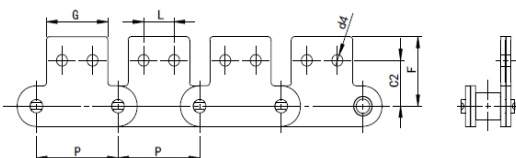
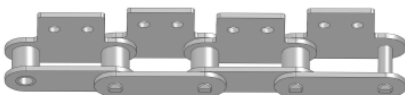
S A 1



S K 1



S A 2



S K 2

