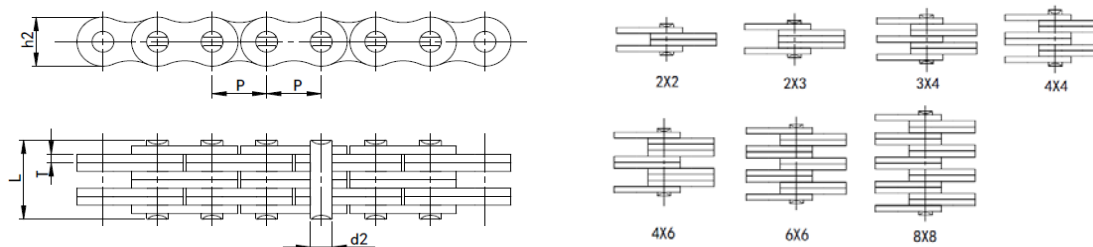


# Leaf stainless steel chain

## LH(B) series

leaf stainless steel chain for sky stacker crane



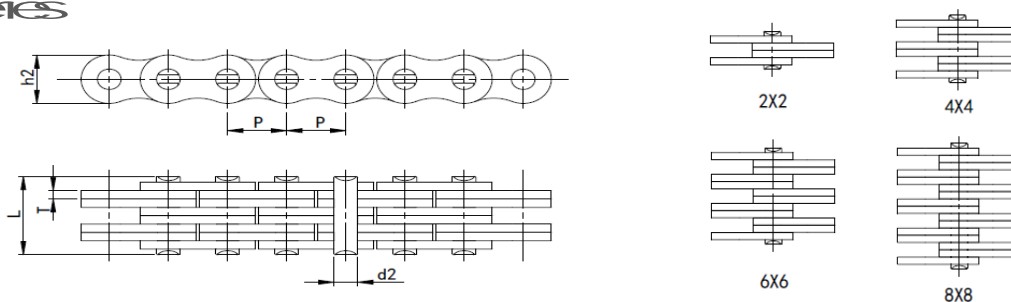
ZMIE Chain No	Pitch	Chain linking	Plate depth	Plate thickness	Pin diameter	Pin length	Ultimate tensile strength	Weight per meter
	P		l2 max	T max	d2 max	L max	Q min	q
	mm		mm	mm	mm	mm	kN	kg/m
LH022SS E42SS		22				115	132	0.64
LH023SS E43SS		23				136	132	0.8
LH034SS E43ES		34				174	204	1.12
LH044SS E44ES	127	44	127	2.08	50.9	195	267	1.28
LH046SS E46ES		46				235	267	1.6
LH066SS E46ES		66				279	402	1.92
LH088SS E48ES		88				365	534	2.56

LH102S	B52S		22				126	204	08
LH103S	B53S		23				157	204	11
LH104S	B54S	1585	34	150	244	596	202	234	15
LH104S	B54S		44				278	402	18
LH106S	B56S		46				274	402	22
LH106S	B56S		66				329	606	25
LH108S	B58S		88				427	804	35
LH122S	B62S		22				173	234	14
LH123S	B63S		23				203	234	18
LH124S	B64S	195	34	181	33	794	243	456	25
LH124S	B64S		44				308	274	29
LH126S	B66S		46				379	274	36
LH126S	B66S		66				442	808	43
LH128S	B68S		88				571	1174	58
LH162S	B82S		22				2134	507	22
LH163S	B83S		23				258	507	27
LH164S	B84S	254	34	213	409	954	376	774	38
LH164S	B84S		44				379	1014	43
LH166S	B86S		46				468	1014	54
LH166S	B86S		66				546	1516	65
LH168S	B88S		88				712	2286	86

L102S	B102S		22				237	606	34
L103S	B103S		23				303	306	43
L104S	B104S		34				403	1944	6
L104S	B104S	315	44	308	49	1111	459	1378	69
L106S	B106S		46				509	1378	86
L106S	B106S		66				6	232	103
L108S	B108S		88				3481	2756	138
L122S	B122S		22				262	972	46
L123S	B123S		23				353	972	58
L124S	B124S		34				477	1476	81
L124S	B124S	31	44	362	577	1271	528	1815	93
L126S	B126S		46				642	1815	116
L126S	B126S		66				765	2722	139
L128S	B128S		88				942	353	186
L142S	B142S		22				335	1148	61
L143S	B143S		23				416	1148	76
L144S	B144S		34				537	1948	106
L144S	B144S	445	44	424	655	1429	597	2266	122
L146S	B146S		46				718	2266	152
L146S	B146S		66				839	3698	182
L148S	B148S		88				1128	4906	243

LH22S	B.152S		22				301	1746	8
LH23S	B.153S		23				468	1746	10
LH24S	B.154S		34				612	2612	14
LH24S	B.154S	508	44	486	752	1746	692	3698	16
LH26S	B.156S		46				843	3698	20
LH26S	B.156S		66				997	5144	24
LH28S	B.158S		88				1284	639	32
LH22S	B.202S		22				514	262	18
LH23S	B.203S		23				617	262	198
LH24S	B.204S		34				816	396	277
LH24S	B.204S	635	44	603	991	2381	9157	5044	316
LH26S	B.206S		46				1148	5044	395
LH26S	B.206S		66				1313	766	477
LH28S	B.208S		88				1712	1008	632

## LL series

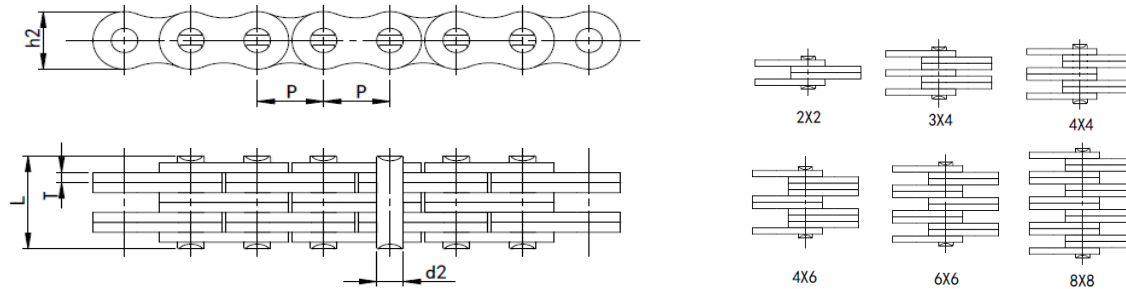


ZMIE Chain No	Chain linking	Plate depth	Plate thickness	Pin diameter	Pin length	Ultimate tensile strength	Weight per meter
		h2 max	T max	∅ max	L max	Q min	q
		mm	mm	mm	mm	kN	kg/m
LL032					76	108	035
LL034					13	186	069
LL036	127	22	102	13	445	267	1
LL038					255	373	133
LL102					92	133	054
LL104					158	267	106
LL106	1585	22	137	16	508	402	157
LL108					288	534	21
LL122					104	1734	073
LL124					179	316	144
LL126	195	22	16	185	572	502	215
LL128					329	606	284

LL162						172	586	152
LL164	254	22	21	31	828	296	864	29
LL166						424	10	43
LL168						554	1728	571
LL202						201	57	23
LL204	3175	22	264	37	1019	338	114	44
LL206						501	171	679
LL208						654	228	875
LL242						284	102	447
LL244	381	22	334	5	1463	463	204	822
LL246						664	366	122
LL248						866	48	163
LL282						322	10	51
LL284	445	22	378	6	159	564	20	99
LL286						806	36	146
LL288						152	48	194
LL322						332	16	58
LL324	508	22	42	6	1781	574	302	114
LL326						816	48	169
LL328						15	60	24

LL402						447	216	103
LL404	635	22	5276	825	2289	779	48	20
LL406						1111	68	25
LL408						155	96	31
LL432						561	36	15
LL434	762	22	638	103	224	974	62	37
LL436						139	708	53
LL438						124	134	74

# A Series



ZMIE Chain No		Chain length	Plate depth	Plate thickness	Pin diameter	Pin length	Ultimate tensile strength	Weight per meter
			$h_2$ max	T max	$d_2$ max	L max	Q min	q
			mm	mm	mm	mm	mm	kN
A32	95	22	7.7	13	36	68	54	0.23
A42		22				79	84	0.39
A44	127	44	10.4	15	36	144	162	0.74
A46		66				205	253	1.1
A52		22				103	132	0.61
A54	1585	34	12.8	20.5	50.8	17	198	1.1
A54		44				189	1.9	
A56		66				289	3.6	



A62		22				124	22	08
A64	195	44	156	242	594	227	384	169
A66		66				324	66	252
A82		22				16	312	154
A84	254	44	205	325	792	294	604	3
A86		66				425	12	446
A102		22				196	53	237
A104	3175	44	256	4	953	359	162	468
A106		66				523	19	7
A122		22				213	72	365
A124	31	44	305	48	111	438	154	705
A126		66				63	286	1044
A144	445	44	364	56	1264	513	1662	1034
A146		66				745	354	1516
A164	508	44	416	64	1421	506	226	1298
A166		66				846	426	1941