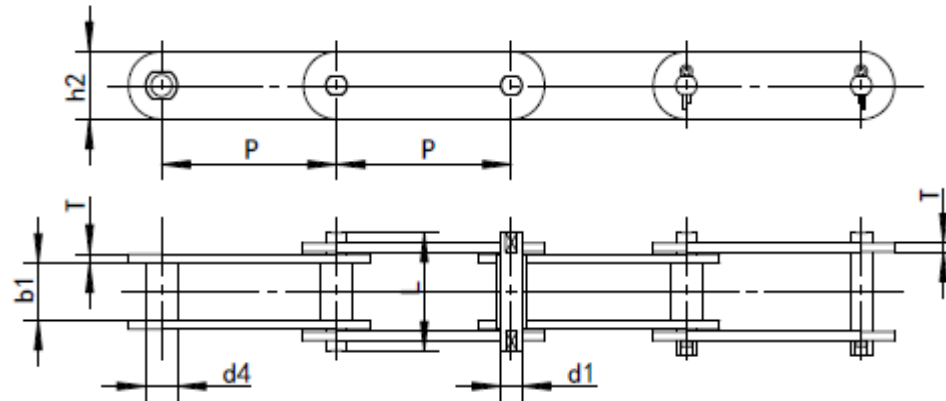
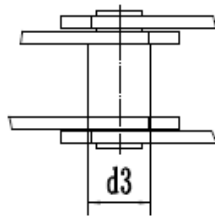


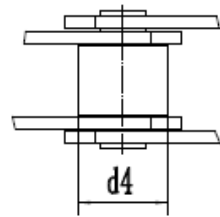
FV series conveyor chain



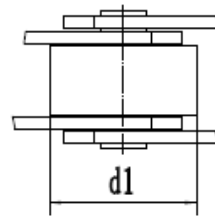
Without rollers



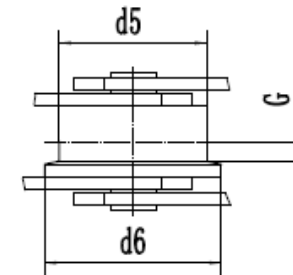
With S small rollers



With P large rollers



With F flanged rollers



ZMIE Chain No.	Pitch							Roller diameter				Bush diameter
	P							d1 max	d4 max	d5 max	G	d3 max
	mm							mm	mm	mm	mm	mm
FV40	50.0	63.0	80.0	100.0	125.00	-	32.0	20.00	40.00	50	4.0	15.0
FV63	63.0	80.0	100.0	125.0	160.00	-	40.0	26.00	50.00	63	5.0	18.0

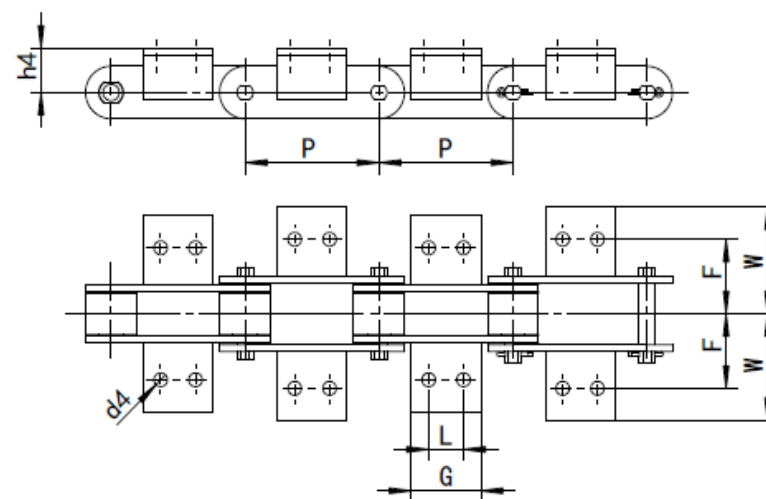
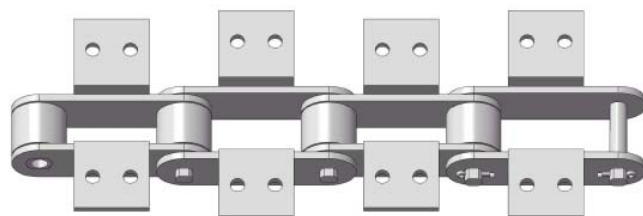
FV series conveyor chain

ZMIE Chain No.	Pitch						Roller diameter					Bush diameter
	P						d1 max	d4 max	d5 max		G	d3 max
	mm						mm	mm	mm		mm	mm
FV90	63.0	80.0	100.0	125.0	160.00	200.0	48.0	30.00	63.00	78	6.5	20.0
FV112	100.0	125.0	160.0	200.0	250.00	-	55.0	32.00	72.00	90	7.5	22.0
FV140	100.0	125.0	160.0	200.0	250.00	-	60.0	36.00	80.00	100	9.0	26.0
FV180	125.0	160.0	200.0	250.0	315.00	-	70.0	42.00	100.00	125	13.0	30.0
FV250	160.0	200.0	250.0	315.0	400.00	-	80.0	50.00	125.00	155	15.0	36.0
FV315	160.0	200.0	250.0	315.0	400.00	-	90.0	60.00	140.00	175	18.0	42.0

FV series conveyor chain

ZMIE Chain No.	Width between inner plates	Pin diameter	Pin length	Plate depth	Plate thickness	Ultimate tensile strength
	b1min	d2 max	L max	h2 max	T max	Q min
	mm	mm	mm	mm	mm	KN/LB
FV40	18.0	10.0	36.0	25.0	3.00	40/9000
FV63	22.0	12.0	45.0	30.0	4.00	63/14175
FV90	25.0	14.0	53.0	35.0	5.00	90/20250
FV112	30.0	16.0	62.0	40.0	6.00	112/25200
FV140	35.0	18.0	67.0	45.0	6.00	140/31500
FV180	45.0	20.0	86.0	50.0	8.00	180/40500
FV250	55.0	26.0	97.0	60.0	8.00	250/56250
FV315	65.0	30.0	113.0	70.0	10.00	315/70875

Attachments for FV series conveyor chain



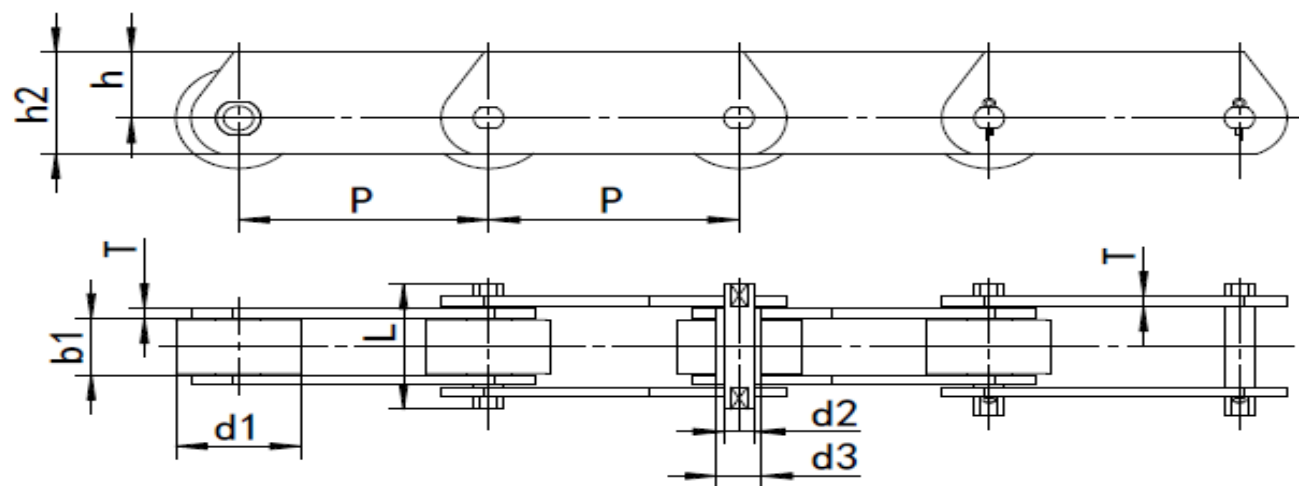
ZMIE Chain No.	P	L	G	d4	F	W	
	mm	mm	mm	mm	mm	mm	
FV40	50.00	△	45.00				
	63.00	△	31.00				
	80.00	25.00	45.00	6.50	25.00	40.50	20.00
	100.00	30.00	50.00				
FV63	125.00	30.00	60.00				
	63.00	△	40.00				
	80.00	25.00	45.00				
	100.00	30.00	50.00	8.40	34.00	50.00	30.00

	125.00	40.00	60.00				
	160.00	50.00	70.00				
	63.00	△	30.00				
	80.00	25.00	45.00				
FV90	100.00	30.00	50.00	8.40	40.00	64.00	35.00
	125.00	40.00	60.00				
	160.00	50.00	70.00				
	200.00	60.00	80.00				
	100.00	30.00	50.00				
	125.00	40.00	65.00				
FV112	160.00	50.00	75.00	11.00	50.00	70.00	40.00
	200.00	65.00	90.00				
	250.00	80.00	105.00				
	100.00	30.00	55.00				
	125.00	40.00	65.00				
FV140	160.00	50.00	75.00	11.00	50.00	81.00	45.00
	200.00	65.00	90.00				
	250.00	80.00	105.00				
	125.00	35.00	63.00				
	160.00	50.00	80.00				
FV180	200.00	65.00	95.00	13.00	64.00	91.00	45.00

	250.00	80.00	110.00				
	315.00	100.00	130.00				
	160.00	50.00	80.00				
	200.00	65.00	95.00				
FV250	250.00	80.00	110.00	14.00	69.00	106.00	55.00
	315.00	100.00	130.00				
	400.00	100.00	130.00				
	160.00	△	50.00				
	200.00	65.00	95.00				
FV315	250.00	80.00	110.00	14.00	85.00		60.00
	315.00	100.00	130.00				
	400.00	100.00	130.00				

△ The attachment with 1 hole only.

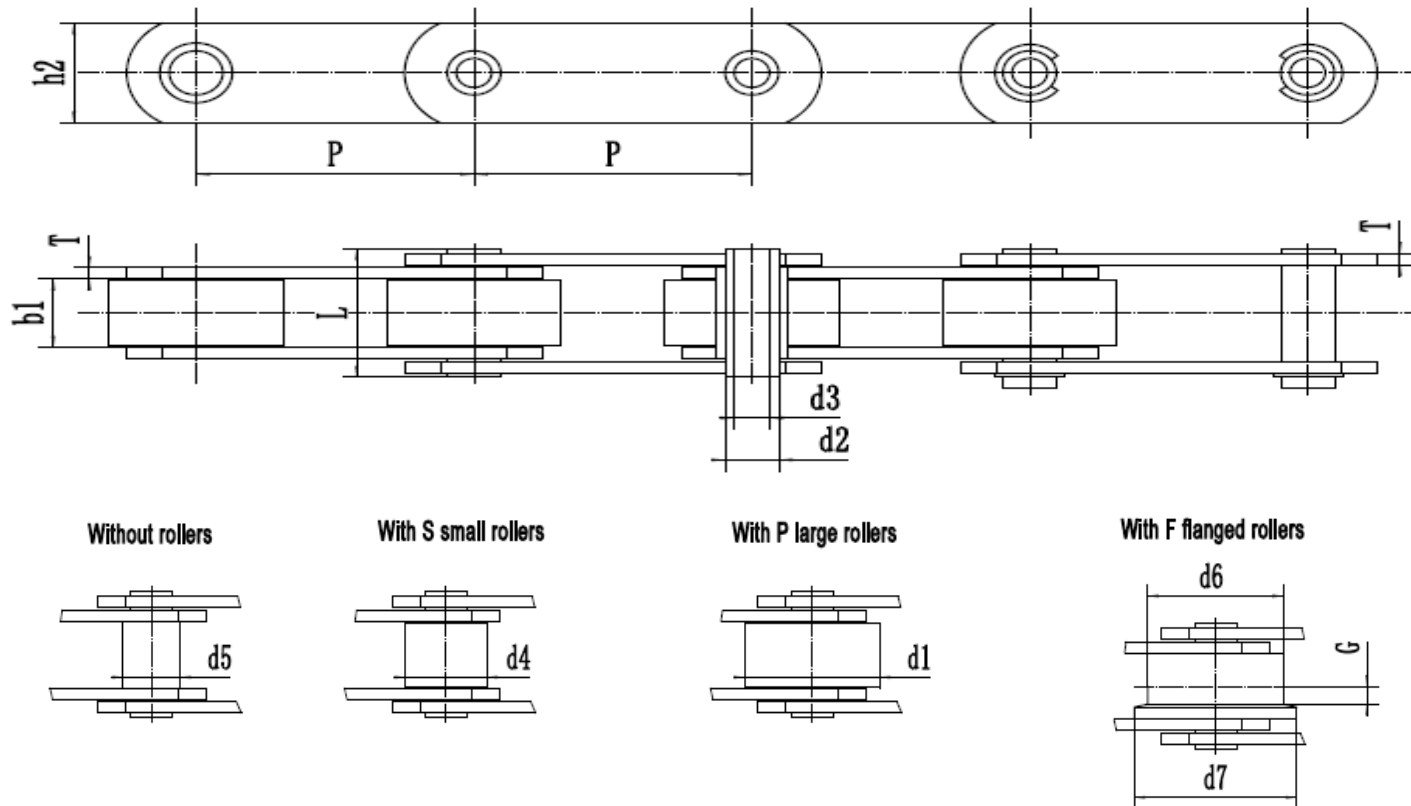
FVT series conveyor chain



ZMIE Chain No.	Pitch					Width between inner plates	Roller diameter
	P					b1 min	d1 max
	mm					mm	mm
FVT40	50.0	63.0	80.0	100.0	125.00	18.0	32.0
FVT63	63.0	80.0	100.0	125.0	160.00	22.0	40.0
FVT90	63.0	80.0	100.0	125.0	160.00	25.0	48.0
FVT112	100.0	125.0	160.0	200.0	250.00	30.0	55.0
FVT140	100.0	125.0	160.0	200.0	250.00	35.0	60.0

FVT180	125.0	160.0	200.0	250.0	315.00	45.0	70.0
FVT250	160.0	200.0	250.0	315.0	-	55.0	80.0
FVT315	160.0	200.0	250.0	315.0	400.00	65.0	90.0
Bush diameter	Pin diameter	Pin length	Plate depth	Plate depth	Plate thickness	Ultimate tensile strength	
	d2max	L max	h2 max	h max	T max	Q min	
mm	mm	mm	mm	mm	mm	KN/LB	
15	10.0	36.0	35.0	22.5	3.00	40/9000	
18	12.0	45.0	40.0	25.0	4.00	63/14175	
20	14.0	53.0	45.0	27.5	5.00	90/20250	
22	16.0	62.0	50.0	30.0	6.00	112/25200	
25	18.0	67.0	60.0	37.5	6.00	140/31500	
30	20.0	86.0	70.0	45.0	8.00	180/40500	
36	26.0	97.0	80.0	50.0	8.00	250/56250	
42	30.0	113.0	90.0	55.0	10.00	315/70875	

FVC series conveyor chain



ZMIE Chain No.	Pitch					
	P					
	mm					
FVC63	63.0	80.0	100.0	125.0	160.00	-

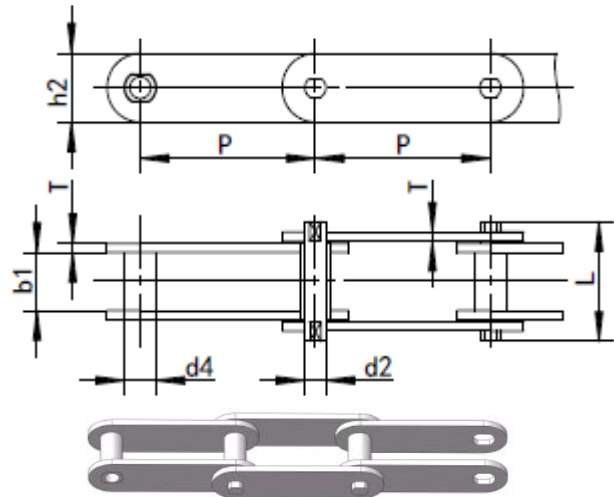
FVC90	63.0	80.0	100.0	125.0	160.00	200.0
FVC112	100.0	125.0	160.0	200.0	250.00	-
FVC140	100.0	125.0	160.0	200.0	250.00	-
FVC180	125.0	160.0	200.0	250.0	315.00	-
FVC250	160.0	200.0	250.0	315.0	400.00	-
FVC315	160.0	200.0	250.0	315.0	400.00	-

Roller diameter					Bush diameter
d1 max		d6 max	d7 max	G	d5 max
mm	mm	mm	mm	mm	mm
40.0	26	50.0	63.0	5.0	18.0
48.0	30	63.0	78.0	6.5	20.0
55.0	32	72.0	90.0	7.5	22.0
60.0	36	80.0	100.0	9.0	26.0
70.0	42	100.0	125.0	13.0	30.0
80.0	50	125.0	155.0	15.0	36.0
90.0	60	140.0	175.0	18.0	42.0

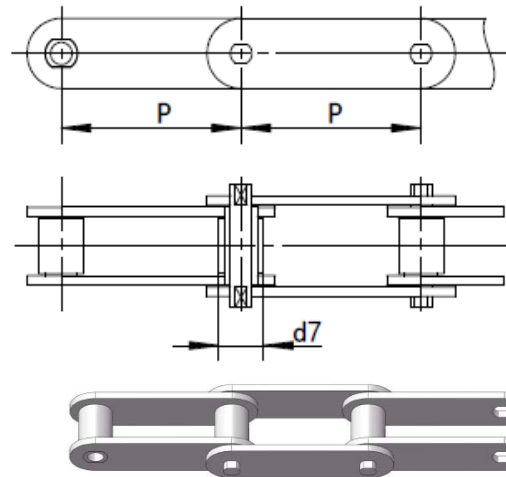
ZMIE Chain No.	Width between inner plates	Pin diameter		Pin length	Plate depth	Plate thickness	Ultimate tensile strength
	b1 min	d2 max	d3 min	L max	h2 max	T max	Q min
	mm	mm	mm	mm	mm	mm	KN/LB
FVC63	22.0	12.0	8.0	45.0	30.00	4.0	46/10350
FVC90	25.0	14.0	10.0	53.0	35.00	5.0	73/16425
FVC112	30.0	16.0	11.0	62.0	40.00	6.0	90/20250
FVC140	35.0	18.0	12.0	67.0	45.00	6.0	110/24750
FVC180	45.0	20.0	14.0	86.0	50.00	8.0	145/32625
FVC250	55.0	26.0	18.0	97.0	60.00	8.0	215/48375
FVC315	65.0	30.0	20.0	117.0	70.00	10.0	295/66375

M series conveyor chain

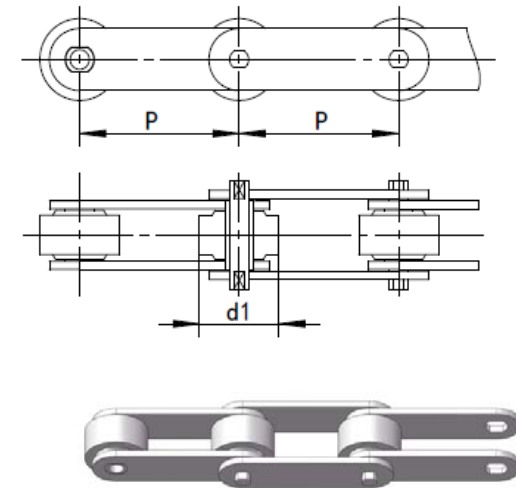
1. Without rollers



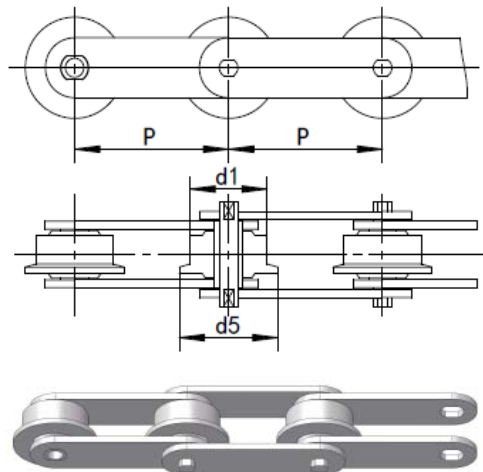
2. With small rollers



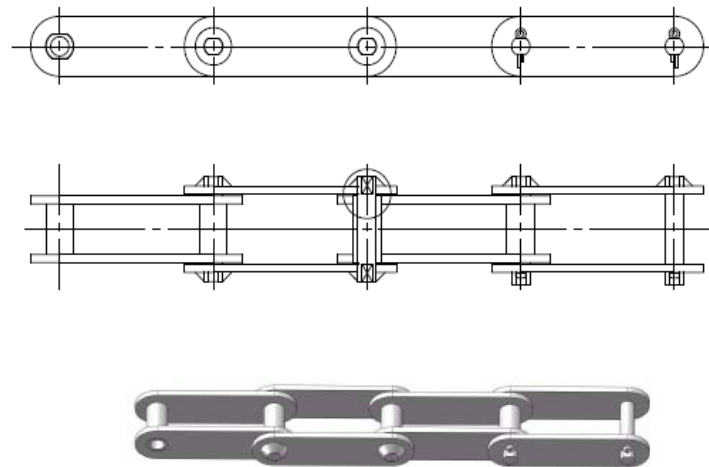
3. With large rollers



4. With flanged rollers



5. Plates welded with riveted pins



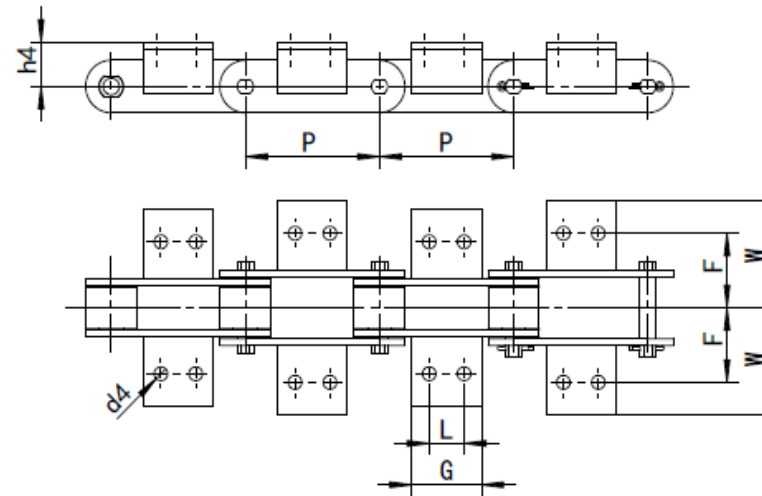
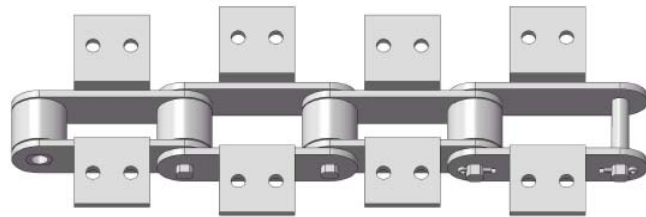
Welded pin



ZMIE Chain No.	Pitch											Bush diameter
	P								d1 max	d7 max	d5max	d4 max
	mm								mm	mm	mm	mm
M20	40.0	50.0	63.0	80.0	100.00	125.0	160.0		25.00	12.5	32.0	9.0
M28	50.0	63.0	80.0	100.0	125.00	160.0	200.0		30.00	15	36.0	10.0
M40	63.0	80.0	100.0	125.0	160.00	200.0	250.0		36.00	18	42.0	12.5
M56	63.0	80.0	100.0	125.0	160.00	200.0	250.0		42.00	21	50.0	15.0
M80	80.0	100.0	125.0	160.0	200.00	250.0	315.0		50.00	25	60.0	18.0
M112	80.0	100.0	125.0	160.0	200.00	250.0	315.0	400.00	60.00	30	70.0	21.0
M160	100.0	125.0	160.0	200.0	250.00	315.0	400.0	500.00	70.00	36	85.0	25.0
M224	125.0	160.0	200.0	250.0	315.00	400.0	500.0	630.00	85.00	42	100.0	30.0
M315	160.0	200.0	250.0	315.0	400.00	500.0	630.0		100.00	50	120.0	36.0
M450	200.0	250.0	315.0	400.0	500.00	630.0	800.0		120.00	60	140.0	42.0

ZMIE Chain No.	Width between inner plates	Pin diameter	Pin length	Plate depth	Plate thickness	Ultimate tensile strength
	b1 min	d2 max	L max	h2 max	T max	Q min
	mm	mm	mm	mm	mm	KN/LB
M20	16.0	6.0	35.0	19.0	2.50	20/4500
M28	18.0	7.0	40.0	21.0	3.00	28/6300
M40	20.0	8.5	45.0	26.0	3.50	40/9000
M56	24.0	10.0	52.0	31.0	4.00	56/12600
M80	28.0	12.0	62.0	36.0	5.00	80/18000
M112	32.0	15.0	73.0	41.0	6.00	112/25200
M160	37.0	18.0	85.0	51.0	7.00	160/36000
M224	43.0	21.0	98.0	62.0	8.00	224/50400
M315	48.0	25.0	112.0	72.0	10.00	315/70875
M450	56.0	30.0	135.0	82.0	12.00	450/101250

Attachments for M series conveyor chain



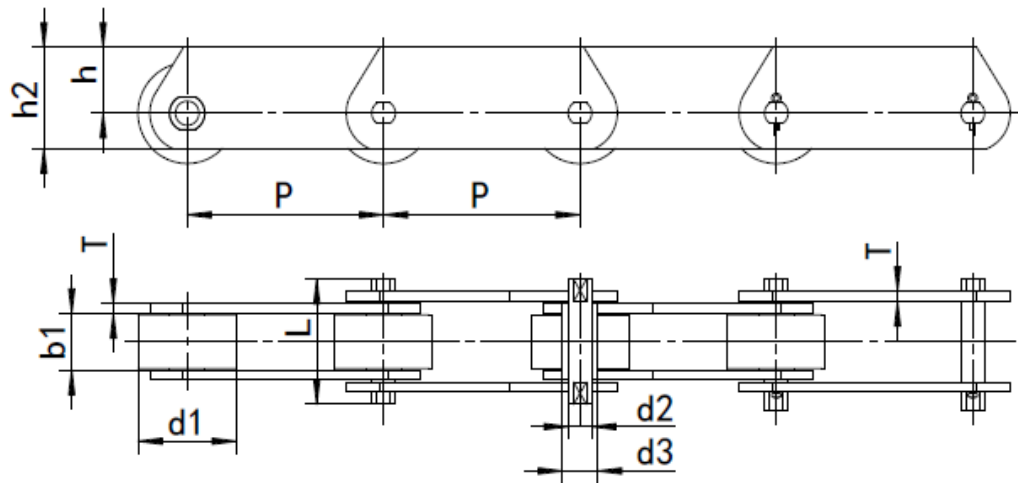
ZMIE Chain No.	P	L	G	d4	F	W	h4
	mm	mm	mm	mm	mm	mm	mm
M20	40.0	△	14.0				
	50.0	△	14.0				
	63.0	20.0	35.0	6.6	27.00	40.0	16.0
	80.0	35.0	50.0				
M28	50.0	△	20.0				
	63.0	△	20.0	9.0	32.00	47.0	20.0

M20	80.0	25.0	45.0	9.0	32.00	47.0	20.0
	100.0	40.0	60.0				
	63.0	△	31.0				
M40	80.0	20.0	45.0	9.0	35	50	25
	100.0	40.0	60.0				
	125.0	65.0	85.0				
	63.0	△	22.0				
	80.0	△	30.0				
M56	100.0	25.0	50.0	11.0	44.0	61.0	30.0
	125.0	50.0	75.0				
	160.0	85.0	110.0				
	80.0	△	30.0				
	100.0	25.0	50.0				
M80	125.0	50.0	75.0	11.0	48.0	65.0	35.0
	160.0	85.0	110.0				
	200.0	125.0	150.0				
	80.0	△	28.0				
	100.0	△	40.0				
M112	125.0	35.0	65.0	14.0	55.0	80.0	40.0
	160.0	65.0	95.0				
	200.0	100.0	130.0				

	100.0	△	30.0				
	125.0	25.0	50.0				
M160	160.0	50.0	80.0	14.0	62.0	85.0	45.0
	200.0	85.0	115.0				
	250.0	145.0	175.0				
	125.0	△	35.0				
	160.0	△	60.0				
M224	200.0	65.0	100.0	18.0	70.0	110.0	55.0
	250.0	125.0	160.0				
	315.0	190.0	230.0				
	160.0	△	35.0				
	200.0	50.0	85.0				
M315	250.0	100.0	140.0	18.0	80.0	115.0	65.0
	315.0	155.0	190.0				
	400.0	155.0	205.0				

△ The attachment with 1 hole only.

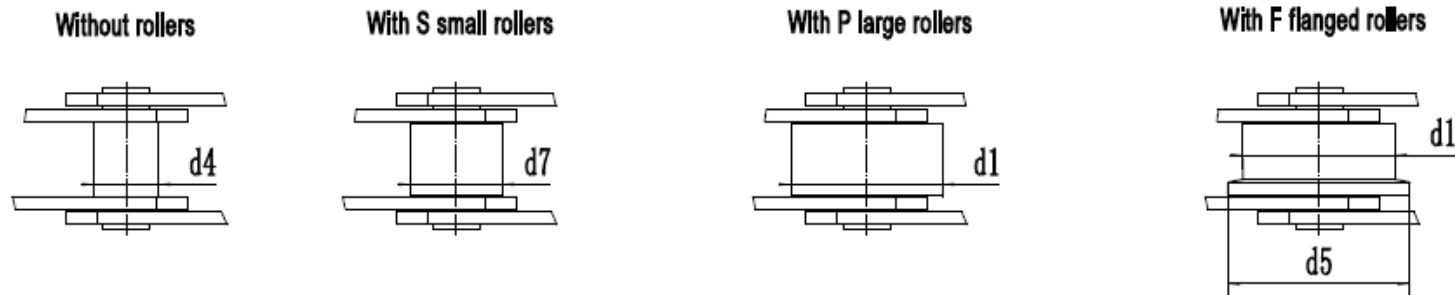
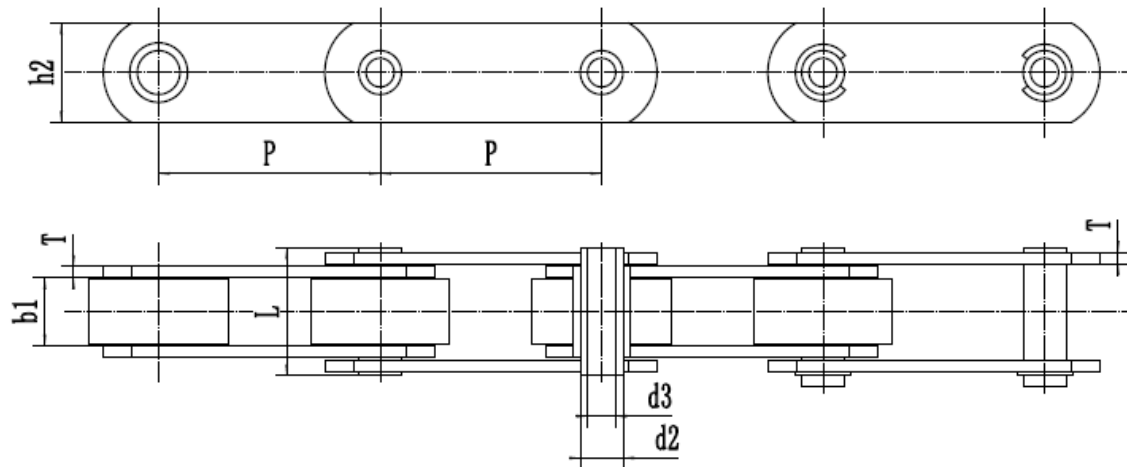
MT series conveyor chain



ZMIE Chain No.	Pitch					Width between inner plates	Roller diameter
	P					b1 min	d1 max
	mm					mm	mm
MT20	40.0	50.0	63.0	80.0	100.00	16.0	25.0
MT28	50.0	63.0	80.0	100.0	125.00	18.0	30.0
MT40	63.0	80.0	100.0	125.0	160.00	20.0	36.0
MT56	63.0	80.0	100.0	125.0	160.00	24.0	42.0
MT80	80.0	100.0	125.0	160.0	200.00	28.0	50.0

MT112	80.0	100.0	125.0	160.0	200.00	32.0	60.0
MT160	100.0	125.0	160.0	200.0	250.00	37.0	70.0
MT224	125.0	160.0	200.0	250.0	315.00	43.0	85.0
MT315	160.0	200.0	250.0	315.0	400.00	48.0	100.0
MT450	200.0	250.0	315.0	400.0	500.00	56.0	120.0
Bush diameter	Pin diameter	Pin length	Plate depth	Plate depth	Plate thickness	Ultimate tensile strength	
d3 max	d2 max	L max	h2 max	h max	T max	Q min	
mm	mm	mm	mm	mm	mm	KN/LB	
9	6.0	35.0	25.0	16.0	2.50	20/4500	
10	7.0	40.0	30.0	20.0	3.00	28/6300	
12.5	8.5	45.0	35.0	22.5	3.50	40/9000	
15	10.0	52.0	45.0	30.0	4.00	56/12600	
18	12.0	62.0	50.0	32.5	5.00	80/18000	
21	15.0	73.0	60.0	40.0	6.00	112/25200	
25	18.0	85.0	70.0	45.0	7.00	160/36000	
30	21.0	98.0	90.0	60.0	8.00	224/50400	
36	25.0	112.0	100.0	65.0	10.00	315/70875	
42	30.0	135.0	120.0	80.0	12.00	450/101250	

MC series conveyor chain



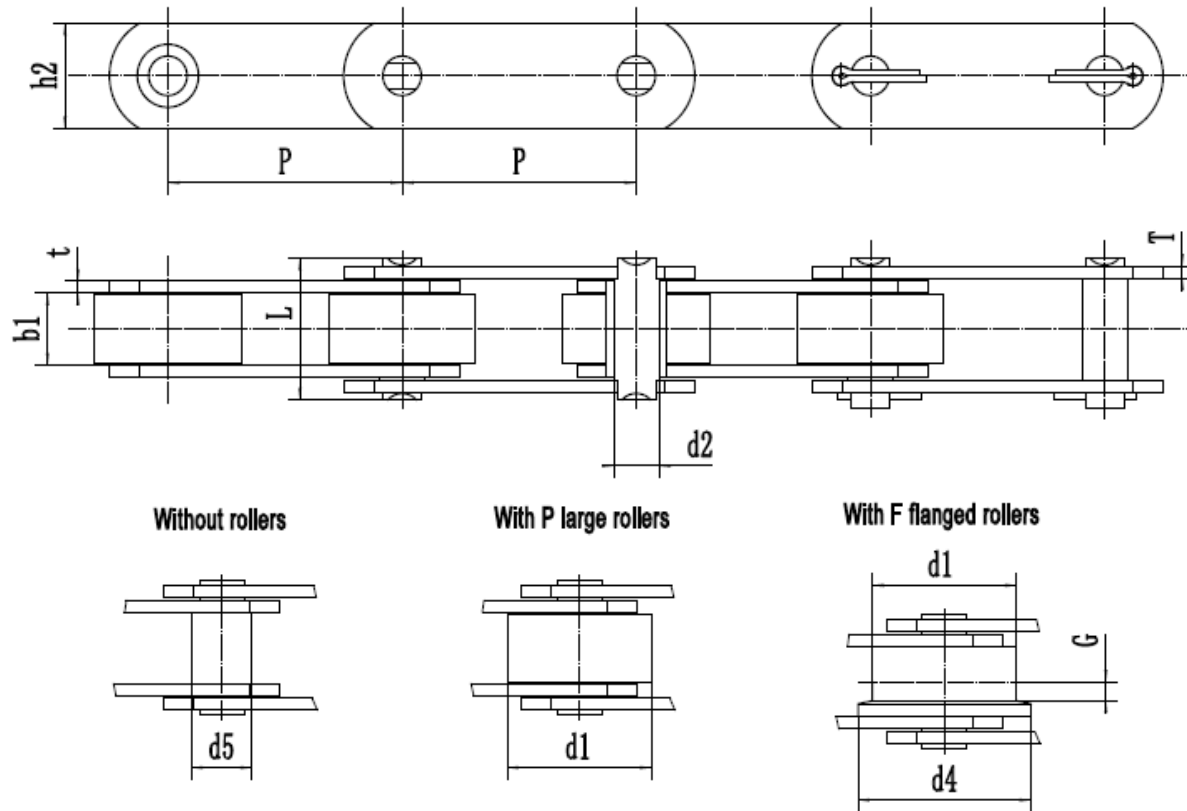
ZMIE Chain No.	Pitch						Roller diameter			Bush diameter
	P						d1 max	d7 max	d5 max	d4 max
	mm						mm	mm	mm	mm
MC28	63.0	80.0	100.0	125.0	160.00		36.0	25	45.0	17.5
MC56	80.0	100.0	125.0	160.0	200.00	250.0	50.0	30	60.0	21.0

MC112	100.0	125.0	160.0	200.0	250.00	315.0	70.0	42	85.0	29.0
MC224	160.0	200.0	250.0	315.0	400.00	500.0	100.0	60	120.0	41.0



ZMIE Chain No.	Width between inner plates	Pin diameter		Pin length	Plate depth	Plate thickness	Ultimate tensile strength
	b1 min	d2 max	d3 min	L max	h2 max	T max	Q min
	mm	mm	mm	mm	mm	mm	KN/LB
MC28	20.0	13.0	8.2	36.0	25.00	3.5	28/6300
MC56	24.0	15.5	10.2	45.0	35.00	4.0	56/12600
MC112	32.0	22.0	14.3	62.5	50.00	6.0	112/25200
MC224	43.0	31.0	20.3	83.0	70.00	8.0	224/50400

Z series conveyor chain

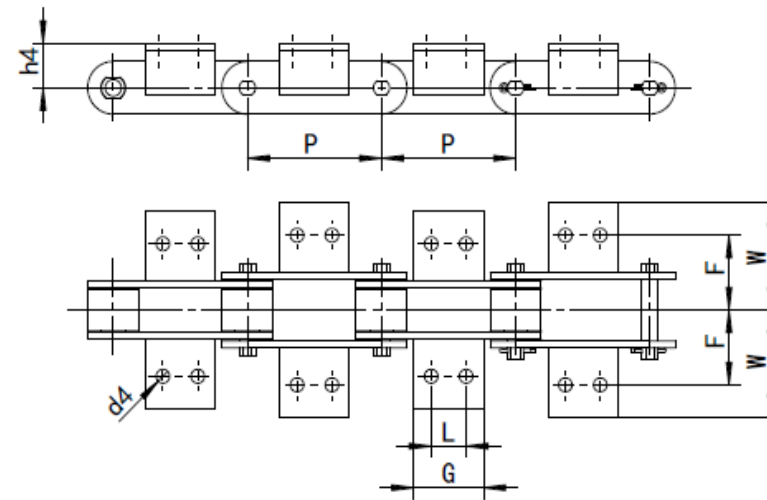
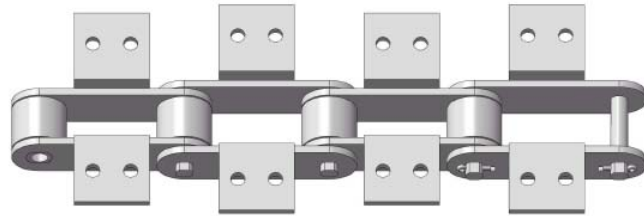


ZMIE Chain No.	Pitch								Roller diameter			Bush diameter
	P								d1 max	d4 max	G	d5 max
	mm								mm	mm	mm	mm
Z40	50.80	63.50	76.20	88.90	101.60	127.00	152.40	31.75	40.00	2.50	17.00	
Z100	76.20	88.90	101.60	127.00	152.40	177.80	203.20	47.50	60.00	3.50	23.00	

ZMIE Chain No.	Pitch							Roller diameter			Bush diameter
	P							d1 max	d4 max	G	d5 max
	mm							mm	mm	mm	mm
Z160	101.60	127.00	152.40	177.80	203.20	228.60	254.00	66.70	82.00	3.50	33.00
Z300	152.40	177.80	203.20	254.00	304.80	-	-	88.90	114.00	8.50	38.00

ZMIE Chain No.	Width between inner plates	Pin diameter	Pin length	Plate depth	Plate thickness	Ultimate tensile strength
	b1 min	d2 max	L max	h2 max	t/T max	Q min
	mm	mm	mm	mm	mm	KN/LB
Z40	15.00	14.00	37.00	25.00	4.00	40/9000
Z100	19.00	19.00	45.00	40.00	5.0/4.0	100/22500
Z160	26.00	26.90	58.00	50.00	7.0/5.0	156/35100
Z300	38.00	32.00	84.00	60.00	10/8.0	300/67500

Attachments for Z series conveyor chain

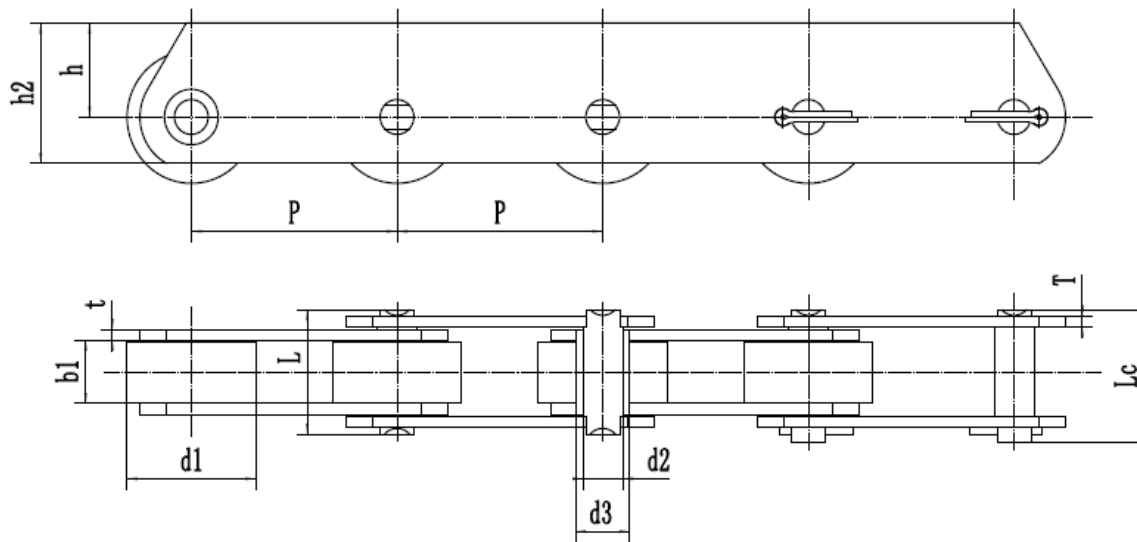


ZMIE Chain No.	P	L	G	d4	F	W	h4
	mm	mm	mm	mm	mm	mm	mm
	50.80	△	45.00			64.50	
	63.50	22.20	43.00			56.00	
	76.20	22.20	45.00			68.00	
Z40	88.90	31.80	50.00	9.30	38.10	56.00	19.00
	101.60	31.80	64.00			55.00	
	127.00	57.20	84.00			56.00	
	152.40	57.20	84.00			56.00	

	76.20	△	30.00				
	88.90	△	30.00				
	101.60	31.80	64.00				
Z112	127.00	57.20	84.00	10.50	44.50	65.00	32.00
	152.40	57.20	114.50				
	177.80	80.00	110.00				
	203.20	80.00	110.00				
	101.60	△	35.00				
	127.00	31.70	56.00				
	152.40	57.20	84.00				
Z140	177.80	57.20	84.00	12.30	54.00	77.00	38.00
	203.20	100.00	130.00				
	228.60	100.00	150.00				
	254.00	135.00	170.00				
	152.40	38.10	70.00				
	177.80	38.10	70.00				
Z315	203.20	76.20	100.00	14.00	73.00	100.00	51.00
	254.00	90.00	152.40				
	304.80	190.00	225.00				

△ The attachment with 1 hole only.

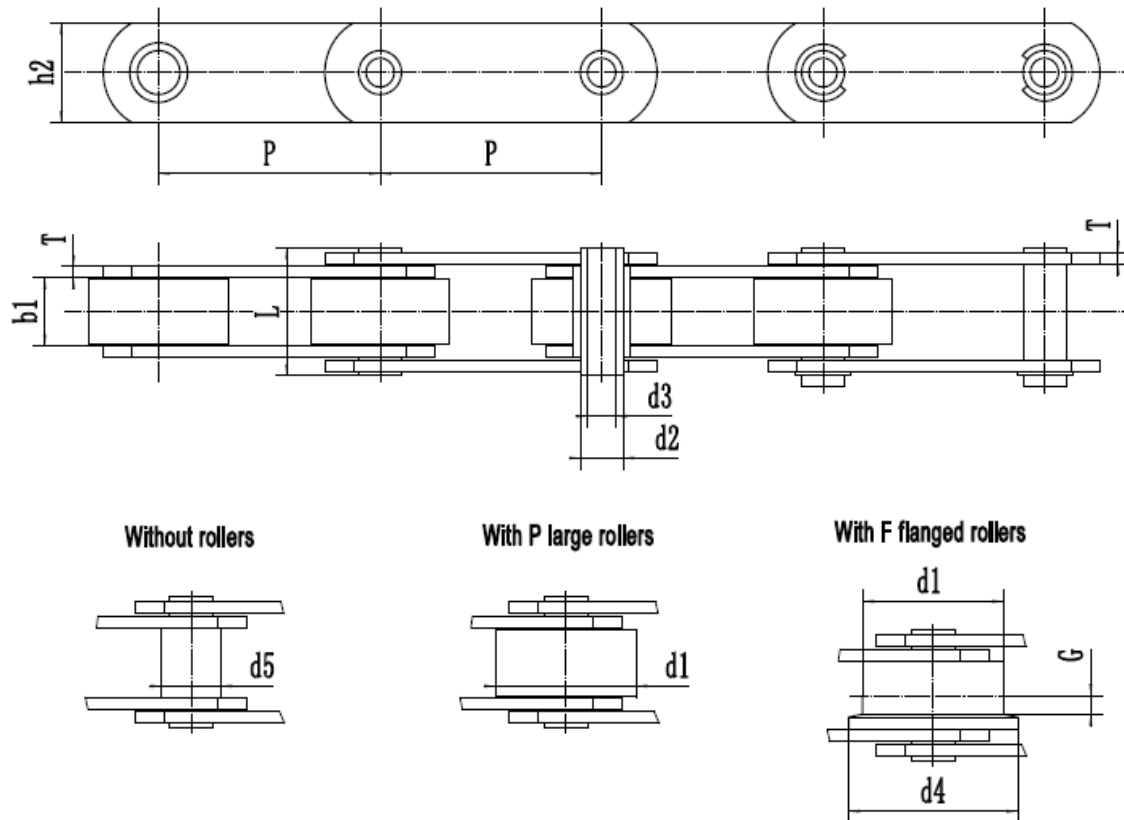
ZE series conveyor chain



ZMIE Chain No.	Pitch							Roller diameter	Bush diameter	Pin diameter	Pin length	
	P							d1 max	d3 max	d2 max	L max	Lc max
	mm							mm	mm	mm	mm	mm
ZE40	50.80	63.50	76.20	88.90	101.60	127.00	152.40	31.75	17.00	14.00	37.00	40.50
ZE100	76.20	88.90	101.60	127.00	152.40	177.80	203.20	47.50	23.00	19.00	45.00	50.50
ZE160	101.60	127.00	152.40	177.80	203.20	228.60	254.00	66.70	33.00	26.90	58.00	63.50
ZE300	152.40	177.80	203.20	254.00	304.80	-	-	88.90	38.00	32.00	84.00	94.00

ZMIE Chain No.	Width between inner plates	Plate depth	Plate depth	Plate thickness	Ultimate tensile strength
	b1 min	h2 max	h max	T max	Q min
	mm	mm	mm	mm	KN/LB
ZE40	15.00	40.00	27.00	4.00	40/9000
ZE100	19.00	50.00	30.00	5.0/4.0	100/22500
ZE160	26.00	70.00	45.00	7.0/5.0	156/35100
ZE300	38.00	90.00	60.00	10/8.0	300/67500

ZC series conveyor chain



ZMIE Chain No.	Pitch							Roller diameter			Bush diameter
	P							d1 max	d4 max	G	d5 max
	mm							mm	mm	mm	mm
ZC21	38.10	50.80	63.50	76.20	-	-	-	25.40	-	-	11.00

ZC40	50.80	63.50	76.20	88.90	101.60	127.00	152.40	31.75	40.00	2.50	17.00
ZC60	76.20	88.90	101.60	127.00	152.40	177.80	203.20	47.50	60.00	3.50	23.00
ZC150	101.60	127.00	152.40	177.80	203.20	228.60	254.00	66.70	82.00	4.00	33.00
ZC300	152.40	177.80	203.20	254.00	304.80	-	-	88.90	114.00	8.50	38.00

ZMIE Chain No.	Width between inner plates	Pin diameter		Pin length	Plate depth	Plate thickness	Ultimate tensile strength
	b1 min	d2 max	d3 min	L max	h2 max	T max	Q min
	mm	mm	mm	mm	mm	mm	KN/LB
ZC21	12.70	9.00	6.50	26.00	18.00	2.50	21/4725
ZC40	15.00	14.00	10.20	36.40	25.00	4.00	40/9000
ZC60	19.00	19.00	13.20	45.00	40.00	5.0/4.0	60/13500
ZC150	26.00	26.90	20.20	58.00	50.00	7.0/5.0	150/33750
ZC300	38.00	32.00	22.50	83.00	60.00	10/8.0	300/67500