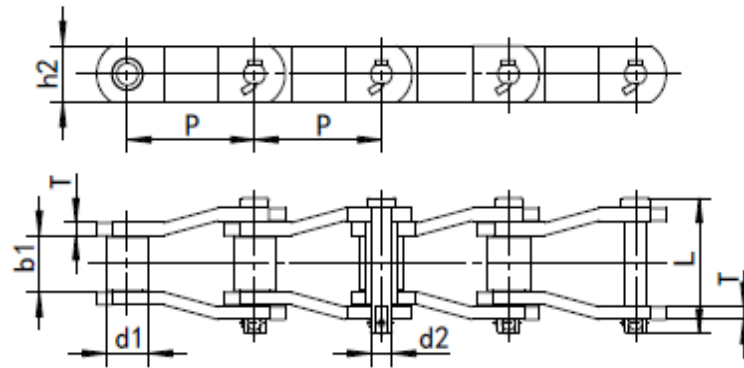
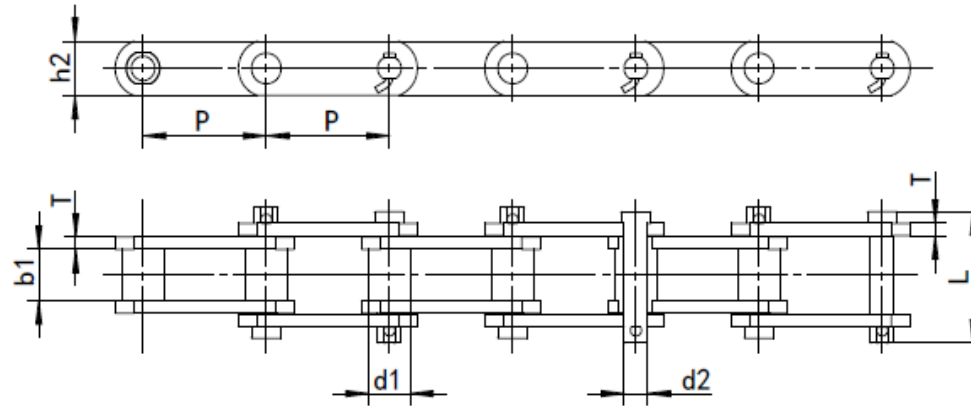


Crank link Drive chain



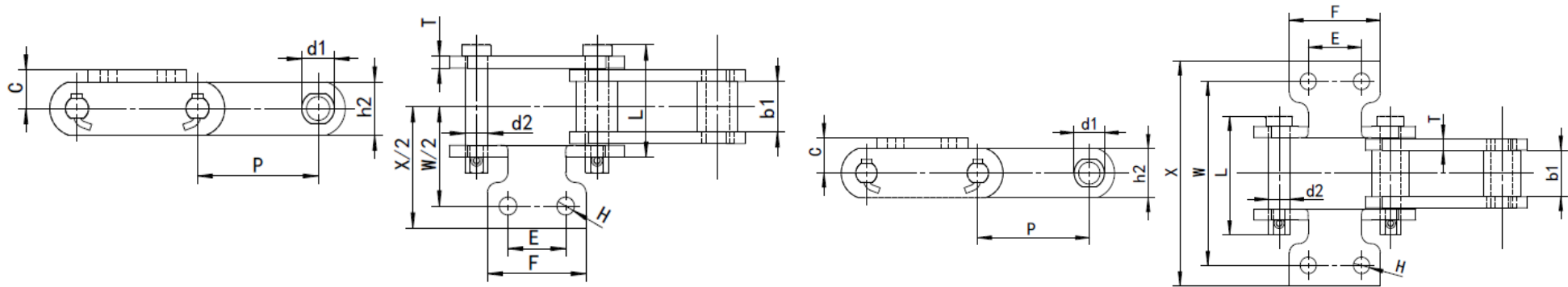
ZMIE Chain No.	Pitch	Roller diameter	Inner width	Pin diameter	Pin length	Plate depth	Plate thickness	Ultimate tensile strength	Weight per meter
	P	d1 max	b1 min	d2 max	L max	h2 max	T max	Q min	q
	mm	mm	mm	mm	mm	mm	mm	KN	kg/m
SS2065	50.8	28.6	32.5	15.1	79.50	38.0	7.9	220.00	12.14
MXS882	66.3	22.2	28.6	11.1	68.50	28.5	6.4	115.00	5.30
2512	77.9	41.3	39.6	19.1	100.00	57.0	9.7	340.00	18.40
2184	152.4	76.2	35.0	22.2	76.00	50.8	9.5	330.00	18.17
SS1245	103.5	45.2	49.6	23.8	129.40	60.0	14.5	550.00	31.19
6024	152.4	76.2	76.2	38.1	186.00	101.6	19.1	1600.00	69.00

Engineering steel bush chain



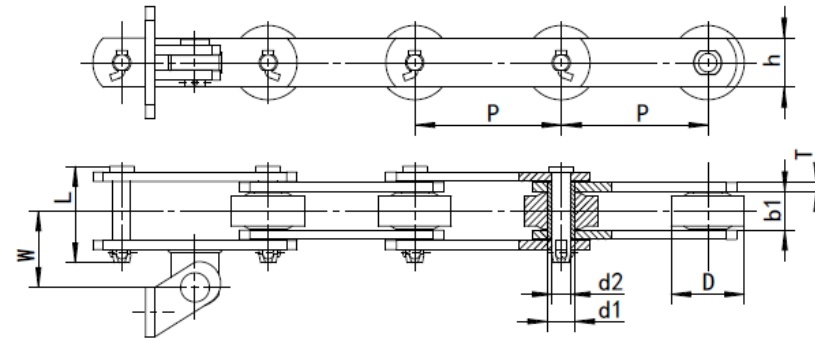
ZMIE Chain No.	Pitch	Bush diameter	Width between inner plates	Pin diameter	Pin length	Plate depth	Plate thickness	Ultimate tensile strength	
	P	d1 max	b1 min	d2 max	L max	h2 max	T max	Q min	q
	mm	mm	mm	mm	mm	mm	mm	KN	kg/m
S188	66.3	22.4	26.9	12.7	68.60	28.4	6.4	102.00	5.60
S131	78.1	31.8	33.5	15.9	90.50	38.1	9.7	160.00	11.60
S102B	101.6	25.4	54.1	15.9	111.30	38.1	9.7	160.00	10.40
S111	120.9	36.6	66.8	19.1	131.20	50.8	9.7	214.00	15.90
S110	152.4	32.0	54.1	15.9	111.30	38.1	9.7	160.00	9.80
S150	153.7	44.7	84.3	25.4	164.60	63.5	12.7	378.00	25.70

Engineering steel bush chain



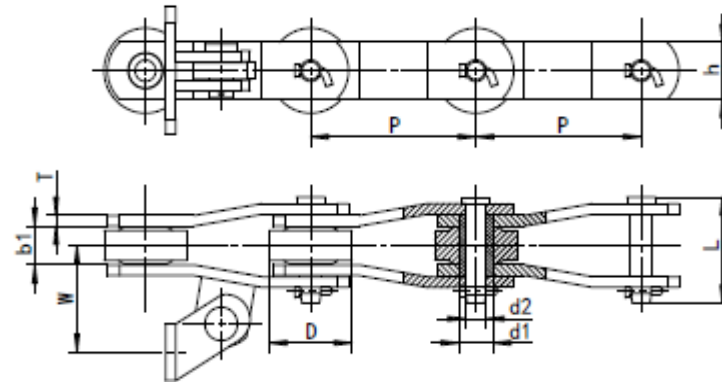
ZMIE Chain No.	Pitch	Bush diameter	Width between inner plates	Pin diameter	Pin length	Plate depth	Plate thickness	Dimensions						Ultimate tensile strength
	P	d1 max	b1 min	d2 max	L max	h2 max	T max	C	E	F	W	X	H	Q
	mm	mm	mm	mm	mm	mm	mm	mm	mm	mm	mm	mm	mm	KN
S188	66.3	22.4	26.9	12.7	68.60	28.4	6.4	20.60	31.70	54.1	106.4	130.0	9.6	102.0
S131	78.1	31.8	33.5	15.9	90.50	38.1	9.7	25.40	38.10	66.8	105.0	130.0	12.7	160.0
S102B	101.6	25.4	54.1	15.9	111.30	38.1	9.7	25.40	44.40	68.3	135.0	170.0	9.6	160.0
S110	152.4	32.0	54.1	15.9	111.30	38.1	9.7	25.40	44.40	73.1	135.0	170.0	9.6	160.0

AS2 attachment steel conveyor chain



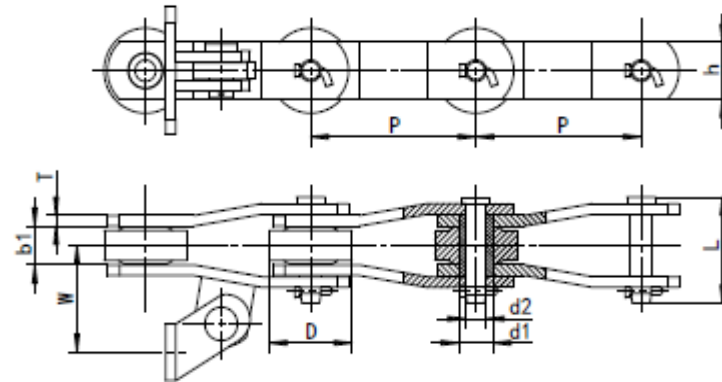
ZMIE Chain No.	Pitch	Inner depth	Plate thickness	Plate depth	Pin diameter	Pin length	Bush diameter	Roller diameter	Dimensions	Ultimate tensile strength
	P	b1	T	h	d2	L	d1	D	W	Q
	mm	mm	mm	mm	mm	mm	mm	mm	mm	KN
1131	152.4	39.6	9.5	50.8	19.1	99.0	28.6	76.2	66.0	209.0
09060	152.4	38.1	9.6	50.8	19.1	97.0	28.7	69.9	88.9	270.0
09061	152.4	38.1	9.6	57.1	19.1	97.0	28.7	69.9	88.9	380.0
09063	152.4	38.1	10.4	60.4	23.9	102.1	31.7	76.2	100.0	630.0
1796	152.4	38.1	9.6	57.1	22.1	99.0	31.7	69.9	88.9	450.0
2198	152.4	38.8	12.7	60.4	22.1	112.0	31.7	76.2	99.3	450.0

AS2 attachment steel conveyor chain



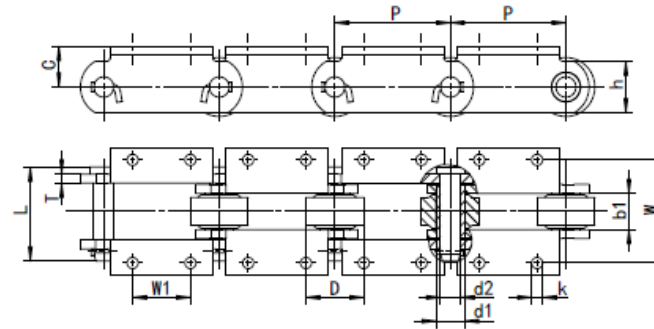
ZMIE Chain No.	Pitch	Inner depth	Plate thickness	Plate depth	Pin diameter	Pin length	Bush diameter	Roller diameter	Dimension s	Ultimate tensile strength
	P	b1	T	h	d2	L	d1	D	W	Q
	mm	mm	mm	mm	mm	mm	mm	mm	mm	KN
2184	152.4	34.9	9.5	50.8	22.2	95.2	31.7	76.2	91.9	356.0
09060	152.4	38.1	9.6	50.8	19.1	97	28.7	69.9	88.9	270.0
09061	152.4	38.1	9.6	57.1	19.1	97	28.7	69.9	88.9	380.0
09063	152.4	38.1	10.4	60.4	23.9	102.1	31.7	76.2	100.0	630.0
1796	152.4	38.1	9.6	57.1	22.1	99	31.7	69.9	88.9	450.0
2198	152.4	38.8	12.7	60.4	22.1	112	31.7	76.2	99.3	450.0
9184	152.4	38.1	12.7	63.5	23.9	12.8	31.7	76.2	98.4	787.0
9185	152.4	38.1	12.7	63.5	23.9	12.8	31.7	88.9	98.4	787.0

AS2 attachment steel conveyor chain



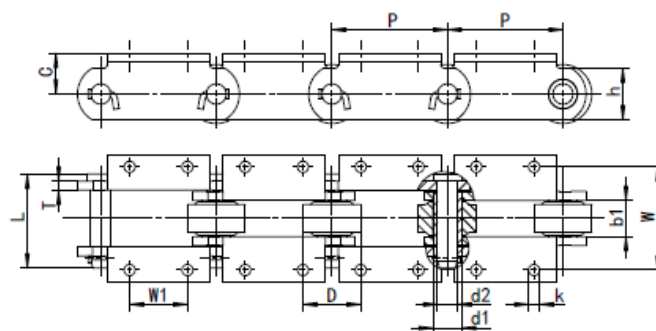
ZMIE Chain No.	Pitch	Inner depth	Plate thickness	Plate depth	Pin diameter	Pin length	Bush diameter	Roller diameter	Dimension s	Ultimate tensile strength
	P	b1	T	h	d2	L	d1	D	W	Q
	mm	mm	mm	mm	mm	mm	mm	mm	mm	KN
F9184	152.4	39.6	12.7	63.5	23.9	12.8	31.7	76.2	98.4	787.0
8184	203.2	45.9	12.7	69.8	25.4	96.7	38.1	88.9	81.8	750.0
B5509	228.6	37.8	9.6	57.1	22.2	76.4	31.7	76.2	79.2	450.0

K2 attachment steel conveyor chain



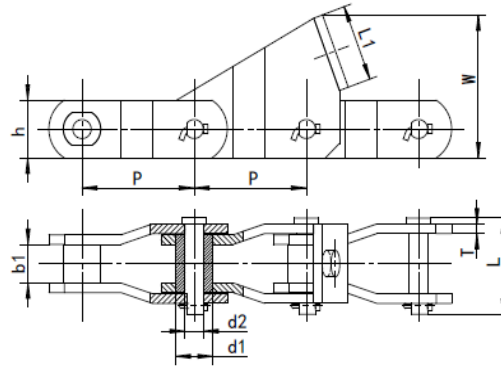
ZMIE Chain No.	Pitch	Width between inner plates	Plate thickness	Plate depth	Pin diameter	Pin length	Bush diameter	Roller diameter	Dimensions				Average tensile strength
	P	b1	T	h	d2	L	d1	D	W	W1	k	C	Q
	mm	mm	mm	mm	mm	mm	mm	mm	mm	mm	mm	mm	KN
0904	101.6	31.0	7.8	44.5	17.5	81.0	25.4	50.8	88.9	36.6	9.7	31.8	220.0
09060	152.4	38.1	9.6	50.8	19.1	97.0	28.7	69.9	112.1	76.2	12.7	41.4	270.0
SS996*	152.4	38.1	9.6	50.8	19.1	98.4	28.7	69.9	112.1	76.2	12.7	41.4	315.0
09061	152.4	38.1	9.6	57.2	19.1	97.0	28.7	69.9	112.1	76.2	12.7	41.4	380.0
1796	152.4	38.1	9.6	57.2	22.2	99.0	31.7	69.9	112.1	76.2	14.3	41.4	450.0
1797	152.4	38.1	9.6	57.2	22.2	99.0	31.7	76.2	112.1	76.2	14.3	41.4	450.0
2178*	152.4	39.7	9.5	50.8	22.3	95.3	28.7	69.8	143.1	76.2	14.3	41.4	270.0
2198*	152.4	38.1	12.7	60.4	22.1	112.0	31.7	76.2	112.1	76.2	12.7	41.4	450.0

K2 attachment steel conveyor chain



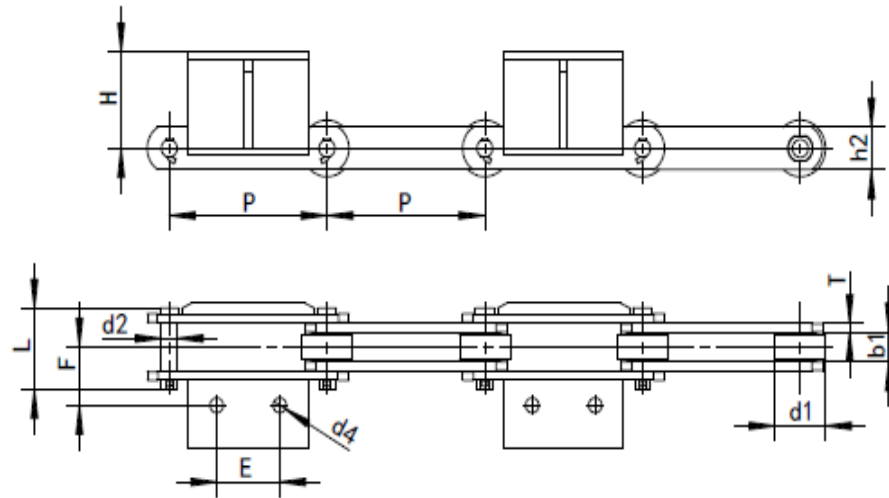
ZMIE Chain No.	Pitch	Width between inner plates	Plate thickness	Plate depth	Pin diameter	Pin length	Bush diameter	Roller diameter	Dimensions				Average tensile strength
	P	b1	T	h	d2	L	d1	D	W	W1	k	C	Q
	mm	mm	mm	mm	mm	mm	mm	mm	mm	mm	mm	mm	KN
09063	152.4	38.1	10.4	60.4	23.9	102.1	31.7	76.2	112.1	76.2	12.7	44.5	630.0
09065	152.4	38.1	12.7	60.4	26.9	107.9	38.1	76.2	112.1	76.2	12.7	42.9	720.0
113C	152.4	38.4	12.7	65.0	22.2	111.2	31.7	81.0	112.1	76.2	14.3	45.5	420.0
SS800R*	203.2	45.9	12.7	71.4	25.6	124.0	38.1	88.9	131.8	114.3	16.0	55.6	750.0
B5513	228.6	61.1	16.0	69.8	31.8	142.6	44.4	107.9	203.2	76.2	19.0	69.9	810.0
C2630	304.8	69.9	16.0	88.9	35.1	193.6	44.4	101.6	203.2	127.0	17.5	69.9	1350.0

Pusher type steel conveyor chain



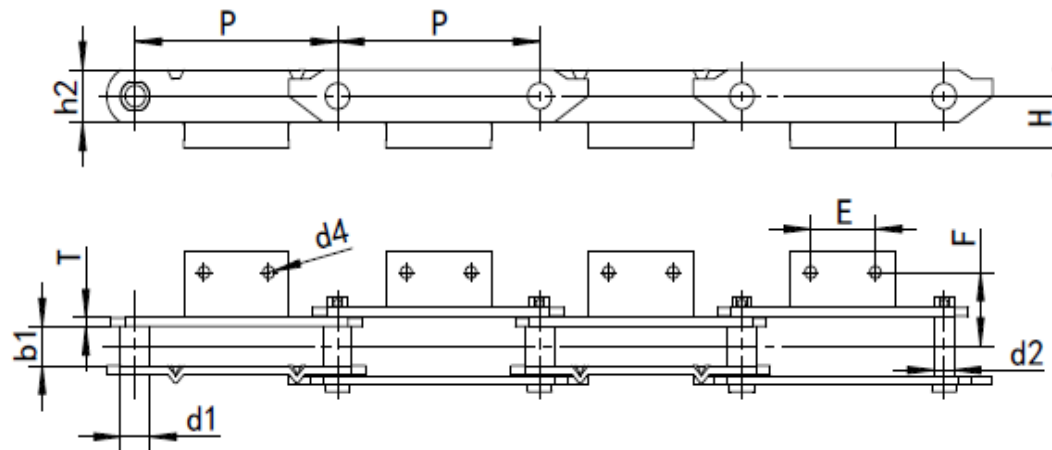
ZMIE Chain No.	Pitch	Inner depth	Plate thickness	Plate depth	Pin diameter	Pin length	Bush diameter	Dimensions		Ultimate tensile strength
	P	b1	T	h	d2	L	d1	L1	W	Q
	mm	mm	mm	mm	mm	mm	mm	mm	mm	KN
5002-FG35	153.7	50.8	13.0	64.0	25.3	127.0	50.8	99.0	173.0	400.0
5025-FG36	152.4	50.8	12.7	76.2	25.3	127.0	50.8	101.6	184.4	520.0

Reclaim Conveyor Chain



ZMIE Chain No.	Pitch	Width between inner plates	Roller diameter	Pin diameter	Pin length	Plate depth	Plate thickness	Dimensions				Ultimate tensile strength
	P	b1 min	d1 max	d2 max	L max	h2 max	T max	H	d4	E	F	Q min
	mm	mm	mm	mm	mm	mm	mm	mm	mm	mm	mm	KN
P250A	250.0	46.0	95.0	25.0	115.0	72.0	12	136.0	26.0	100.0	106.0	670.0
P250B	250.0	42.0	80.0	24.0	112.0	60.0	12	150.0	21.0	100.0	83.0	520.0
P250C	250.0	55.8	120.0	34.0	135.0	90.0	14	120.0	22.0	120.0	88.5	725.0
P250D	250.0	50.0	90.0	30.0	127.0	75.0	14	131.5	26.0	100.0	98.5	750.0
P315A	315.0	50.0	120.0	36.0	127.0	80.0	12	136.0	21.0	130.0	89.5	610.0

Apron Chain



ZMIE Chain No.	Pitch	Inner depth	Bush diameter	Pin diameter	Plate depth	Plate thickness	Dimensions				Ultimate tensile strength
	P	b1 min	d1 max	d2 max	h2 max	T max	H	d4	E	F	Q min
	mm	mm	mm	mm	mm	mm	mm	mm	mm	mm	KN
P250-250	250.0	40.0	32.0	20.0	60.0	8.0	60	14.0	80.0	70.0	250.0
P250-350	250.0	45.0	36.0	25.0	65.0	10.0	60	14.0	80.0	85.0	350.0
P250-400	250.0	45.0	40.0	26.0	70.0	10.0	70	14.0	80.0	85.0	400.0
P250-450	250.0	50.0	42.0	30.0	70.0	10.0	70	14.0	80.0	85.0	450.0
P250-500	250.0	60.0	44.0	30.0	80.0	10.0	70	16.0	85.0	90.0	500.0
P250-650	250.0	60.0	44.0	30.0	80.0	12.7	70	16.0	85.0	90.0	650.0
P250-850	250.0	60.0	54.0	36.0	90.0	12.7	60	16.0	85.0	90.0	850.0