

Table No.3 Specifications—Stock "TC" Sheaves

Part No.	Bushing	Type	DIAMETERS			1 GROOVE,F = 1 1/4"									Wt. Less Bush.
			Datum "C"	Outside	Inside	Dimensions									
						O.L.	L	P	C	H	G	X	E		
1TC70	Q1	10-Sol.	7.0"	7.40	-	2 25/32	2 1/2	3/4	1/2	4 1/8	—	—	9/32	8.91	
1TC72	Q1	10-Web	7.2	7.60	5.40	2 25/32	2 1/2	3/4	1/2	4 1/8	—	—	9/32	8.36	
1TC74	Q1	10-Web	7.4	7.80	5.60	2 25/32	2 1/2	3/4	1/2	4 1/8	—	—	9/32	8.97	
1TC76	Q1	10-Web	7.6	8.00	5.80	2 25/32	2 1/2	3/4	1/2	4 1/8	—	—	9/32	9.19	
1TC78	Q1	10-Web	7.8	8.20	6	2 25/32	2 1/2	3/4	1/2	4 1/8	—	—	9/32	10.01	
1TC80	Q1	10-Web	8.0	8.40	6 1/4	2 25/32	2 1/2	3/4	1/2	4 1/8	—	—	9/32	10.34	
1TC82	Q1	10-Web	8.2	8.60	6 7/16	2 25/32	2 1/2	3/4	1/2	4 1/8	—	—	9/32	10.67	
1TC84	Q1	10-Web	8.4	8.80	6 5/8	2 25/32	2 1/2	3/4	1/2	4 1/8	—	—	9/32	11.24	
1TC86	Q1	10-Web	8.6	9.00	6 13/16	2 25/32	2 1/2	3/4	1/2	4 1/8	—	—	9/32	11.68	
1TC88	Q1	10-Web	8.8	9.20	7	2 25/32	2 1/2	3/4	1/2	4 1/8	—	—	9/32	12.08	
1TC90	Q1	10-Web	9.0	9.40	7 1/4	2 25/32	2 1/2	3/4	1/2	4 1/8	—	—	9/32	12.54	
1TC92	Q1	10-Web	9.2	9.60	7 7/16	2 25/32	2 1/2	3/4	1/2	4 1/8	—	—	9/32	12.99	
1TC94	Q1	16-Arm	9.4	9.80	7 5/8	2 25/32	2 1/2	1	1/4	4 1/8	3/4	1 3/4	9/32	13.73	
1TC96	Q1	16-Arm	9.6	10.00	7 13/16	2 25/32	2 1/2	1	1/4	4 1/8	3/4	1 3/4	9/32	14.02	
1TC98	Q1	16-Arm	9.8	10.20	8	2 25/32	2 1/2	1	1/4	4 1/8	3/4	1 3/4	9/32	14.40	
1TC100	Q1	16-Arm	10.0	10.40	8 1/4	2 25/32	2 1/2	1	1/4	4 1/8	3/4	1 3/4	9/32	14.73	
1TC102	Q1	16-Arm	10.2	10.60	8 7/16	2 25/32	2 1/2	1	1/4	4 1/8	3/4	1 3/4	9/32	14.99	
1TC106	Q1	16-Arm	10.6	11.00	8 13/16	2 25/32	2 1/2	1	1/4	4 1/8	3/4	1 3/4	9/32	15.52	
1TC110	Q1	16-Arm	11.0	11.40	9 1/4	2 25/32	2 1/2	1	1/4	4 1/8	3/4	1 3/4	9/32	16.05	
1TC114	Q1	16-Arm	11.4	11.80	9 5/8	2 25/32	2 1/2	1	1/4	4 1/8	3/4	1 3/4	9/32	17.09	
1TC120	Q1	16-Arm	12.0	12.40	10 1/4	2 25/32	2 1/2	1	1/4	4 1/8	3/4	1 3/4	9/32	18.12	
1TC130	Q1	16-Arm	13.0	13.40	11 1/4	2 25/32	2 1/2	1	1/4	4 1/8	3/4	1 3/4	9/32	19.49	
1TC160	Q1	16-Arm	16.0	16.40	14 1/4	2 25/32	2 1/2	1	1/4	4 1/8	3/4	1 3/4	9/32	25.35	
1TC200	Q1	16-Arm	20.0	20.40	18 1/4	2 25/32	2 1/2	1	1/4	4 1/8	3/4	1 3/4	9/32	34.17	
1TC240	Q1	16-Arm	24.0	24.40	22 1/4	2 25/32	2 1/2	1	1/4	4 1/8	3/4	1 3/4	9/32	42.99	

For Use with All "C" Section Belts

Table No.4

Specifications—Stock "TC" Sheaves

Part No.	Bushing	Type	DIAMETERS			2 GROOVES,F =2 1/4"								Wt. Less Bush.
			Datum "C"	Outside	Inside	Dimensions								
						O.L.	L	P	C	H	G	X	E	
2TC70	Q1	13-Web	7.0"	7.40	5 1/4	3 1/32	2 1/2	1/2	1/4	4 1/8	3/4	1 3/4	9/32	12.72
2TC72	Q1	13-Web	7.2	7.60	5 7/16	3 1/32	2 1/2	1/2	1/4	4 1/8	3/4	1 3/4	9/32	13.05
2TC74	Q1	13-Web	7.4	7.80	5 5/8	3 1/32	2 1/2	1/2	1/4	4 1/8	3/4	1 3/4	9/32	13.73
2TC76	Q1	13-Web	7.6	8.00	5 13/16	3 1/32	2 1/2	1/2	1/4	4 1/8	3/4	1 3/4	9/32	14.26
2TC78	Q1	13-Web	7.8	8.20	6	3 1/32	2 1/2	1/2	1/4	4 1/8	3/4	1 3/4	9/32	15.48
2TC80	Q1	13-Web	8.0	8.40	6 1/4	3 1/32	2 1/2	1/2	1/4	4 1/8	3/4	1 3/4	9/32	15.76
2TC82	Q1	13-Web	8.2	8.60	6 7/16	3 1/32	2 1/2	1/2	1/4	4 1/8	3/4	1 3/4	9/32	16.56
2TC84	Q1	13-Web	8.4	8.80	6 5/8	3 1/32	2 1/2	1/2	1/4	4 1/8	3/4	1 3/4	9/32	17.13
2TC86	Q1	13-Web	8.6	9.00	6 13/16	3 1/32	2 1/2	1/2	1/4	4 1/8	3/4	1 3/4	9/32	17.79
2TC88	Q1	13-Web	8.8	9.20	7	3 1/32	2 1/2	1/2	1/4	4 1/8	3/4	1 3/4	9/32	18.39
2TC90	Q1	13-Web	9.0	9.40	7 1/4	3 1/32	2 1/2	1/2	1/4	4 1/8	3/4	1 3/4	9/32	18.83
2TC92	Q1	13-Web	9.2	9.60	7 7/16	3 1/32	2 1/2	1/2	1/4	4 1/8	3/4	1 3/4	9/32	19.33
2TC94	Q1	13-Arm	9.4	9.80	7 5/8	3 1/32	2 1/2	1/2	1/4	4 1/8	3/4	1 3/4	9/32	18.06
2TC96	Q1	13-Arm	9.6	10.00	7 13/16	3 1/32	2 1/2	1/2	1/4	4 1/8	3/4	1 3/4	9/32	18.41
2TC98	Q1	13-Arm	9.8	10.20	8	3 1/32	2 1/2	1/2	1/4	4 1/8	3/4	1 3/4	9/32	18.98
2TC100	Q1	13-Arm	10.0	10.40	8 1/4	3 1/32	2 1/2	1/2	1/4	4 1/8	3/4	1 3/4	9/32	19.22
2TC102	Q1	13-Arm	10.2	10.60	8 7/16	3 1/32	2 1/2	1/2	1/4	4 1/8	3/4	1 3/4	9/32	19.49
2TC106	Q1	13-Arm	10.6	11.00	8 13/16	3 1/32	2 1/2	1/2	1/4	4 1/8	3/4	1 3/4	9/32	20.55
2TC110	Q1	13-Arm	11.0	11.40	9 1/4	3 1/32	2 1/2	1/2	1/4	4 1/8	3/4	1 3/4	9/32	21.45
2TC114	Q1	13-Arm	11.4	11.80	9 5/8	3 1/32	2 1/2	1/2	1/4	4 1/8	3/4	1 3/4	9/32	22.47
2TC120	Q1	13-Arm	12.0	12.40	10 1/4	3 1/32	2 1/2	1/2	1/4	4 1/8	3/4	1 3/4	9/32	23.96
2TC130	Q1	13-Arm	13.0	13.40	11 1/4	3 1/32	2 1/2	1/2	1/4	4 1/8	3/4	1 3/4	9/32	26.28
2TC160	Q1	13-Arm	16.0	16.40	14 1/4	3 1/32	2 1/2	1/2	1/4	4 1/8	3/4	1 3/4	9/32	34.72
2TC200	Q1	13-Arm	20.0	20.40	18 1/4	3 1/32	2 1/2	1/2	1/4	4 1/8	3/4	1 3/4	9/32	47.18
2TC240	Q1	13-Arm	24.0	24.40	22 1/4	3 1/32	2 1/2	1/2	1/4	4 1/8	3/4	1 3/4	9/32	67.24

Table No.5

Part No.	Bushing	Type	DIAMETERS			3 GROOVES,F=3 1/4"								Wt. Less Bush.
			Datum "C"	Outside	Inside	Dimensions								
						O.L.	L	P	C	H	G	X	E	
3TC70	Q1	13-Web	7.0"	7.40	5 1/4	3 17/32	2 1/2	0	3/4	4 1/8	3/4	1 3/4	9/32	15.48
3TC72	Q1	13-Web	7.2	7.60	5 7/16	3 17/32	2 1/2	0	3/4	4 1/8	3/4	1 3/4	9/32	16.01
3TC74	Q1	13-Web	7.4	7.80	5 5/8	3 17/32	2 1/2	0	3/4	4 1/8	3/4	1 3/4	9/32	17.00
3TC76	Q1	13-Web	7.6	8.00	5 13/16	3 17/32	2 1/2	0	3/4	4 1/8	3/4	1 3/4	9/32	17.81
3TC78	Q1	13-Web	7.8	8.20	6	3 17/32	2 1/2	0	3/4	4 1/8	3/4	1 3/4	9/32	18.83
3TC80	Q1	13-Web	8.0	8.40	6 1/4	3 17/32	2 1/2	0	3/4	4 1/8	3/4	1 3/4	9/32	19.86
3TC82	Q1	13-Web	8.2	8.60	6 7/16	3 17/32	2 1/2	0	3/4	4 1/8	3/4	1 3/4	9/32	20.41
3TC84	Q1	13-Web	8.4	8.80	6 5/8	3 17/32	2 1/2	0	3/4	4 1/8	3/4	1 3/4	9/32	21.14
3TC86	Q1	13-Web	8.6	9.00	6 13/16	3 17/32	2 1/2	0	3/4	4 1/8	3/4	1 3/4	9/32	22.22
3TC88	Q1	13-Web	8.8	9.20	7	3 17/32	2 1/2	0	3/4	4 1/8	3/4	1 3/4	9/32	22.88
3TC90	Q1	13-Web	9.0	9.40	7 1/4	3 17/32	2 1/2	0	3/4	4 1/8	3/4	1 3/4	9/32	23.28
3TC92	Q1	13-Web	9.2	9.60	7 7/16	3 17/32	2 1/2	0	3/4	4 1/8	3/4	1 3/4	9/32	24.56
3TC94	Q1	13-Arm	9.4	9.80	7 5/8	3 17/32	2 1/2	0	3/4	4 1/8	3/4	1 3/4	9/32	23.06
3TC96	Q1	13-Arm	9.6	10.00	7 13/16	3 17/32	2 1/2	0	3/4	4 1/8	3/4	1 3/4	9/32	23.52
3TC98	Q1	13-Arm	9.8	10.20	8	3 17/32	2 1/2	0	3/4	4 1/8	3/4	1 3/4	9/32	23.99
3TC100	Q1	13-Arm	10.0	10.40	8 1/4	3 17/32	2 1/2	0	3/4	4 1/8	3/4	1 3/4	9/32	23.59
3TC102	Q1	13-Arm	10.2	10.60	8 7/16	3 17/32	2 1/2	0	3/4	4 1/8	3/4	1 3/4	9/32	24.89
3TC106	Q1	13-Arm	10.6	11.00	8 13/16	3 17/32	2 1/2	0	3/4	4 1/8	3/4	1 3/4	9/32	25.90
3TC110	Q1	13-Arm	11.0	11.40	9 1/4	3 17/32	2 1/2	0	3/4	4 1/8	3/4	1 3/4	9/32	26.68
3TC114	Q1	13-Arm	11.4	11.80	9 5/8	3 17/32	2 1/2	0	3/4	4 1/8	3/4	1 3/4	9/32	28.26
3TC120	Q1	13-Arm	12.0	12.40	10 1/4	3 17/32	2 1/2	0	3/4	4 1/8	3/4	1 3/4	9/32	29.59
3TC130	Q1	13-Arm	13.0	13.40	11 1/4	3 17/32	2 1/2	0	3/4	4 1/8	3/4	1 3/4	9/32	32.78
3TC160	Q1	13-Arm	16.0	16.40	14 1/4	3 17/32	2 1/2	0	3/4	4 1/8	3/4	1 3/4	9/32	42.99
3TC200	Q1	13-Arm	20.0	20.40	18 1/4	3 17/32	2 1/2	0	3/4	4 1/8	3/4	1 3/4	9/32	60.63
3TC240	Q1	13-Arm	24.0	24.40	22 1/4	3 17/32	2 1/2	0	3/4	4 1/8	3/4	1 3/4	9/32	88.18

For Use with All "C" Section Belts

Table No.6

Specifications—Stock "TC" Sheaves

Part No.	Bushing	Type	DIAMETERS			4 GROOVES,F =4 1/4"									Wt. Less Bush.
			Datum "C"	Outside	Inside	Dimensions									
						O.L.	L	P	C	H	G	X	E		
4TC70	Q2	13-Web	7.0"	7.40	5 1/4	4 17/32	3 1/2	0	3/4	4 1/8	3/4	2 3/4	9/32	22.18	
4TC72	Q2	13-Web	7.2	7.60	5 7/16	4 17/32	3 1/2	0	3/4	4 1/8	3/4	2 3/4	9/32	23.55	
4TC74	Q2	13-Web	7.4	7.80	5 5/8	4 17/32	3 1/2	0	3/4	4 1/8	3/4	2 3/4	9/32	23.88	
4TC76	Q2	13-Web	7.6	8.00	5 13/16	4 17/32	3 1/2	0	3/4	4 1/8	3/4	2 3/4	9/32	24.63	
4TC78	Q2	13-Web	7.8	8.20	6	4 17/32	3 1/2	0	3/4	4 1/8	3/4	2 3/4	9/32	26.46	
4TC80	Q2	13-Web	8.0	8.40	6 1/4	4 17/32	3 1/2	0	3/4	4 1/8	3/4	2 3/4	9/32	27.43	
4TC82	Q2	13-Web	8.2	8.60	6 7/16	4 17/32	3 1/2	0	3/4	4 1/8	3/4	2 3/4	9/32	28.59	
4TC84	Q2	13-Web	8.4	8.80	6 5/8	4 17/32	3 1/2	0	3/4	4 1/8	3/4	2 3/4	9/32	29.85	
4TC86	Q2	13-Web	8.6	9.00	6 13/16	4 17/32	3 1/2	0	3/4	4 1/8	3/4	2 3/4	9/32	30.95	
4TC88	Q2	13-Web	8.8	9.20	7	4 17/32	3 1/2	0	3/4	4 1/8	3/4	2 3/4	9/32	32.25	
4TC90	Q2	13-Web	9.0	9.40	7 1/4	4 17/32	3 1/2	0	3/4	4 1/8	3/4	2 3/4	9/32	33.09	
4TC92	Q2	13-Web	9.2	9.60	7 7/16	4 17/32	3 1/2	0	3/4	4 1/8	3/4	2 3/4	9/32	33.97	
4TC94	Q2	13-Arm	9.4	9.80	7 5/8	4 17/32	3 1/2	0	3/4	4 1/8	3/4	2 3/4	9/32	31.13	
4TC96	Q2	13-Arm	9.6	10.00	7 13/16	4 17/32	3 1/2	0	3/4	4 1/8	3/4	2 3/4	9/32	32.03	
4TC98	Q2	13-Arm	9.8	10.20	8	4 17/32	3 1/2	0	3/4	4 1/8	3/4	2 3/4	9/32	32.63	
4TC100	Q2	13-Arm	10.0	10.40	8 1/4	4 17/32	3 1/2	0	3/4	4 1/8	3/4	2 3/4	9/32	33.11	
4TC102	Q2	13-Arm	10.2	10.60	8 7/16	4 17/32	3 1/2	0	3/4	4 1/8	3/4	2 3/4	9/32	33.75	
4TC106	Q2	13-Arm	10.6	11.00	8 13/16	4 17/32	3 1/2	0	3/4	4 1/8	3/4	2 3/4	9/32	35.01	
4TC110	Q2	13-Arm	11.0	11.40	9 1/4	4 17/32	3 1/2	0	3/4	4 1/8	3/4	2 3/4	9/32	36.53	
4TC114	Q2	13-Arm	11.4	11.80	9 5/8	4 17/32	3 1/2	0	3/4	4 1/8	3/4	2 3/4	9/32	37.74	
4TC120	Q2	13-Arm	12.0	12.40	10 1/4	4 17/32	3 1/2	0	3/4	4 1/8	3/4	2 3/4	9/32	39.95	
4TC130	Q2	13-Arm	13.0	13.40	11 1/4	4 17/32	3 1/2	0	3/4	4 1/8	3/4	2 3/4	9/32	44.20	
4TC160	Q2	13-Arm	16.0	16.40	14 1/4	4 17/32	3 1/2	0	3/4	4 1/8	3/4	2 3/4	9/32	56.22	
4TC200	Q2	13-Arm	20.0	20.40	18 1/4	4 17/32	3 1/2	0	3/4	4 1/8	3/4	2 3/4	9/32	78.26	
4TC240	Q2	13-Arm	24.0	24.40	22 1/4	4 17/32	3 1/2	0	3/4	4 1/8	3/4	2 3/4	9/32	102.51	

Table No.7

Part No.	Bushing	Type	DIAMETERS			5 GROOVES,F = 5 1/4"								Wt. Less Bush.
			Datum "C"	Outside	Inside	Dimensions								
						O.L.	L	P	C	H	G	X	E	
5TC70	Q2	15-Web	7.0"	7.40	5 1/4	5 1/4	3 1/2	1/2	1 1/4	4 1/8	3/4	2 3/4	9/32	24.87
5TC72	Q2	15-Web	7.2	7.60	5 7/16	5 1/4	3 1/2	1/2	1 1/4	4 1/8	3/4	2 3/4	9/32	26.50
5TC74	Q2	15-Web	7.4	7.80	5 5/8	5 1/4	3 1/2	1/2	1 1/4	4 1/8	3/4	2 3/4	9/32	27.65
5TC76	Q2	15-Web	7.6	8.00	5 13/16	5 1/4	3 1/2	1/2	1 1/4	4 1/8	3/4	2 3/4	9/32	28.35
5TC78	Q2	15-Web	7.8	8.20	6	5 1/4	3 1/2	1/2	1 1/4	4 1/8	3/4	2 3/4	9/32	30.38
5TC80	Q2	15-Web	8.0	8.40	6 1/4	5 1/4	3 1/2	1/2	1 1/4	4 1/8	3/4	2 3/4	9/32	30.47
5TC82	Q2	15-Web	8.2	8.60	6 7/16	5 1/4	3 1/2	1/2	1 1/4	4 1/8	3/4	2 3/4	9/32	32.21
5TC84	Q2	15-Web	8.4	8.80	6 5/8	5 1/4	3 1/2	1/2	1 1/4	4 1/8	3/4	2 3/4	9/32	32.92
5TC86	Q2	15-Web	8.6	9.00	6 13/16	5 1/4	3 1/2	1/2	1 1/4	4 1/8	3/4	2 3/4	9/32	34.30
5TC88	Q2	15-Web	8.8	9.20	7	5 1/4	3 1/2	1/2	1 1/4	4 1/8	3/4	2 3/4	9/32	35.91
5TC90	Q2	15-Web	9.0	9.40	7 1/4	5 1/4	3 1/2	1/2	1 1/4	4 1/8	3/4	2 3/4	9/32	36.55
5TC92	Q2	15-Web	9.2	9.60	7 7/16	5 1/4	3 1/2	1/2	1 1/4	4 1/8	3/4	2 3/4	9/32	37.96
5TC94	Q2	15-Arm	9.4	9.80	7 5/8	5 1/4	3 1/2	1/2	1 1/4	4 1/8	3/4	2 3/4	9/32	35.85
5TC96	Q2	15-Arm	9.6	10.00	7 13/16	5 1/4	3 1/2	1/2	1 1/4	4 1/8	3/4	2 3/4	9/32	36.22
5TC98	Q2	15-Arm	9.8	10.20	8	5 1/4	3 1/2	1/2	1 1/4	4 1/8	3/4	2 3/4	9/32	38.25
5TC100	Q2	15-Arm	10.0	10.40	8 1/4	5 1/4	3 1/2	1/2	1 1/4	4 1/8	3/4	2 3/4	9/32	37.68
5TC102	Q2	15-Arm	10.2	10.60	8 7/16	5 1/4	3 1/2	1/2	1 1/4	4 1/8	3/4	2 3/4	9/32	37.92
5TC106	Q2	15-Arm	10.6	11.00	8 13/16	5 1/4	3 1/2	1/2	1 1/4	4 1/8	3/4	2 3/4	9/32	40.79
5TC110	Q2	15-Arm	11.0	11.40	9 1/4	5 1/4	3 1/2	1/2	1 1/4	4 1/8	3/4	2 3/4	9/32	40.83
5TC114	Q2	15-Arm	11.4	11.80	9 5/8	5 1/4	3 1/2	1/2	1 1/4	4 1/8	3/4	2 3/4	9/32	42.24
5TC120	Q2	15-Arm	12.0	12.40	10 1/4	5 1/4	3 1/2	1/2	1 1/4	4 1/8	3/4	2 3/4	9/32	45.66
5TC130	Q2	15-Arm	13.0	13.40	11 1/4	5 1/4	3 1/2	1/2	1 1/4	4 1/8	3/4	2 3/4	9/32	50.42
5TC160	Q2	15-Arm	16.0	16.40	14 1/4	5 1/4	3 1/2	1/2	1 1/4	4 1/8	3/4	2 3/4	9/32	66.14
5TC200	Q2	15-Arm	20.0	20.40	18 1/4	5 1/4	3 1/2	1/2	1 1/4	4 1/8	3/4	2 3/4	9/32	91.49
5TC240	Q2	15-Arm	24.0	24.40	22 1/4	5 1/4	3 1/2	1/2	1 1/4	4 1/8	3/4	2 3/4	9/32	115.08

For Use with All "C" Section Belts

Table No.8

Specifications—Stock "TC" Sheaves

Part No.	Bushing	Type	DIAMETERS			6 GROOVES, F =6 1/4"									Wt. Less Bush.
			Datum "C"	Outside	Inside	Dimensions									
						O.L.	L	P	C	H	G	X	E		
6TC70	Q2	15-Web	7.0"	7.40	5 1/4	6 1/4	3 1/2	1	1 3/4	4 1/8	3/4	2 3/4	9/32	27.62	
6TC72	Q2	15-Web	7.2	7.60	5 7/16	6 1/4	3 1/2	1	1 3/4	4 1/8	3/4	2 3/4	9/32	29.30	
6TC74	Q2	15-Web	7.4	7.80	5 5/8	6 1/4	3 1/2	1	1 3/4	4 1/8	3/4	2 3/4	9/32	30.75	
6TC76	Q2	15-Web	7.6	8.00	5 13/16	6 1/4	3 1/2	1	1 3/4	4 1/8	3/4	2 3/4	9/32	31.57	
6TC78	Q2	15-Web	7.8	8.20	6	6 1/4	3 1/2	1	1 3/4	4 1/8	3/4	2 3/4	9/32	33.47	
6TC80	Q2	15-Web	8.0	8.40	6 1/4	6 1/4	3 1/2	1	1 3/4	4 1/8	3/4	2 3/4	9/32	33.58	
6TC82	Q2	15-Web	8.2	8.60	6 7/16	6 1/4	3 1/2	1	1 3/4	4 1/8	3/4	2 3/4	9/32	35.38	
6TC84	Q2	15-Web	8.4	8.80	6 5/8	6 1/4	3 1/2	1	1 3/4	4 1/8	3/4	2 3/4	9/32	36.55	
6TC86	Q2	15-Web	8.6	9.00	6 13/16	6 1/4	3 1/2	1	1 3/4	4 1/8	3/4	2 3/4	9/32	38.18	
6TC88	Q2	15-Web	8.8	9.20	7	6 1/4	3 1/2	1	1 3/4	4 1/8	3/4	2 3/4	9/32	39.42	
6TC90	Q2	15-Web	9.0	9.40	7 1/4	6 1/4	3 1/2	1	1 3/4	4 1/8	3/4	2 3/4	9/32	40.32	
6TC92	Q2	15-Web	9.2	9.60	7 7/16	6 1/4	3 1/2	1	1 3/4	4 1/8	3/4	2 3/4	9/32	41.73	
6TC94	Q2	15-Arm	9.4	9.80	7 5/8	6 1/4	3 1/2	1	1 3/4	4 1/8	3/4	2 3/4	9/32	39.20	
6TC96	Q2	15-Arm	9.6	10.00	7 13/16	6 1/4	3 1/2	1	1 3/4	4 1/8	3/4	2 3/4	9/32	40.54	
6TC98	Q2	15-Arm	9.8	10.20	8	6 1/4	3 1/2	1	1 3/4	4 1/8	3/4	2 3/4	9/32	42.20	
6TC100	Q2	15-Arm	10.0	10.40	8 1/4	6 1/4	3 1/2	1	1 3/4	4 1/8	3/4	2 3/4	9/32	42.09	
6TC102	Q2	15-Arm	10.2	10.60	8 7/16	6 1/4	3 1/2	1	1 3/4	4 1/8	3/4	2 3/4	9/32	42.48	
6TC106	Q2	15-Arm	10.6	11.00	8 13/16	6 1/4	3 1/2	1	1 3/4	4 1/8	3/4	2 3/4	9/32	45.68	
6TC110	Q2	15-Arm	11.0	11.40	9 1/4	6 1/4	3 1/2	1	1 3/4	4 1/8	3/4	2 3/4	9/32	46.72	
6TC114	Q2	15-Arm	11.4	11.80	9 5/8	6 1/4	3 1/2	1	1 3/4	4 1/8	3/4	2 3/4	9/32	48.55	
6TC120	Q2	15-Arm	12.0	12.40	10 1/4	6 1/4	3 1/2	1	1 3/4	4 1/8	3/4	2 3/4	9/32	51.28	
6TC130	Q2	15-Arm	13.0	13.40	11 1/4	6 1/4	3 1/2	1	1 3/4	4 1/8	3/4	2 3/4	9/32	57.19	
6TC160	Q2	15-Arm	16.0	16.40	14 1/4	6 1/4	3 1/2	1	1 3/4	4 1/8	3/4	2 3/4	9/32	76.28	
6TC200	Q2	15-Arm	20.0	20.40	18 1/4	6 1/4	3 1/2	1	1 3/4	4 1/8	3/4	2 3/4	9/32	100.97	
6TC240	Q2	15-Arm	24.0	24.40	22 1/4	6 1/4	3 1/2	1	1 3/4	4 1/8	3/4	2 3/4	9/32	133.16	

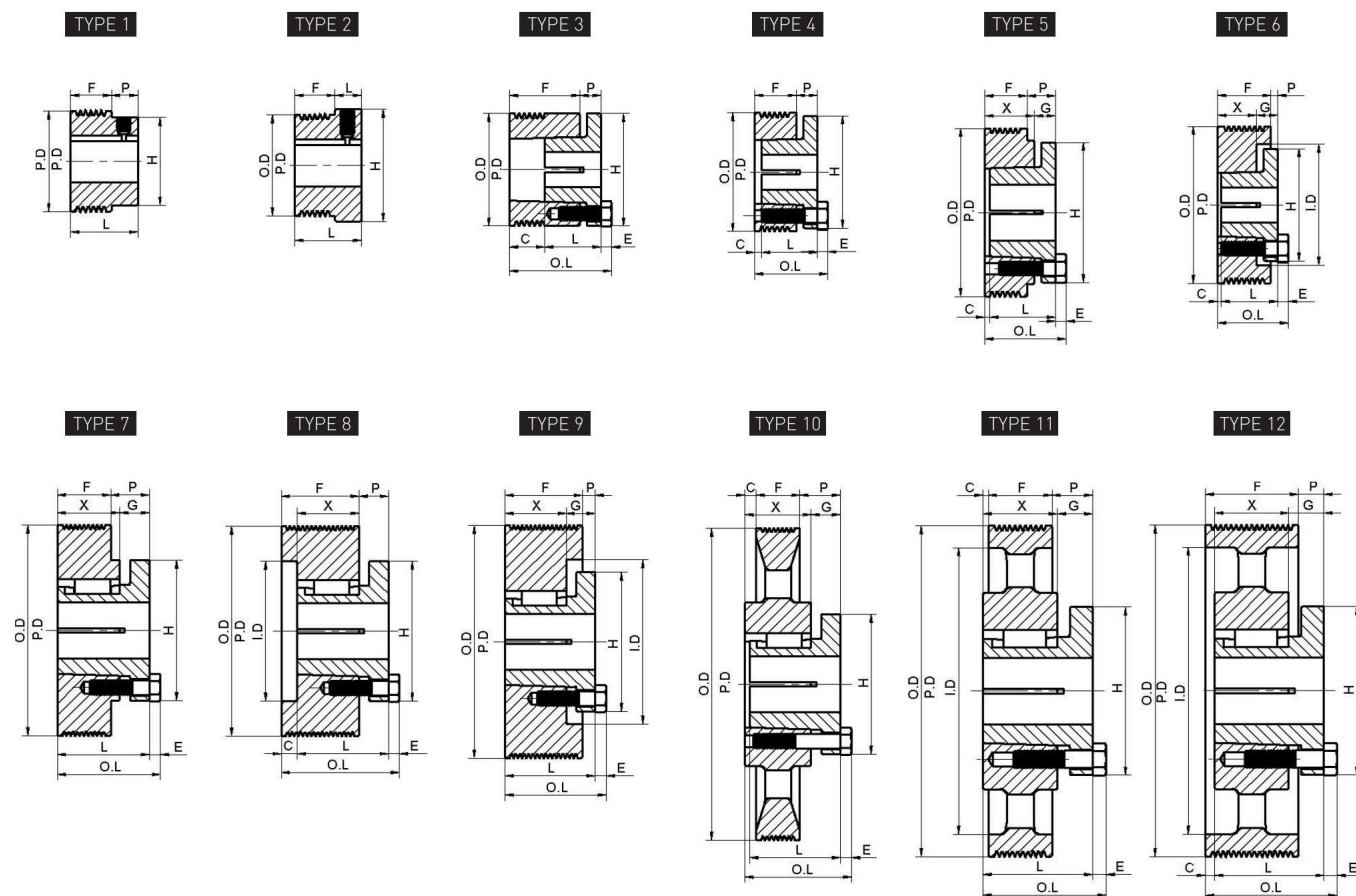


Table No.1

Specifications—Finished Bore Sheaves

Type	DIAMETERS		Dimensions				Stock Bores Marked Product Code					Wt. Less Bush.
	O.D	P.D	F	L	P	H	1/2"	5/8"	3/4"	7/8"	1"	
6 GROOVES												
2	1.50"	1.50"	23/32"	1 3/16"	15/32"	1 1/2	082059	082060	-	-	-	0.5
2	1.50	1.50	23/32	1 3/16	15/32	1 11/16	-	-	-	082061	-	0.5
1	1.60	1.60	23/32	1 3/16	15/32	1 9/16	082062	082063	-	-	-	0.6
2	1.60	1.60	23/32	1 3/16	15/32	1 11/16	-	-	-	082064	-	0.5
2	1.60	1.60	23/32	1 3/16	15/32	1 7/8	-	-	-	-	082065	0.5
1	1.70	1.70	23/32	1 3/16	15/32	1 11/16	082066	082067	-	082068	-	0.6
2	1.70	1.70	23/32	1 3/16	15/32	1 7/8	-	-	-	-	082069	0.6
1	1.80	1.80	23/32	1 3/16	15/32	1 11/16	082070	082071	082072	082073	-	0.7
2	1.80	1.80	23/32	1 3/16	15/32	1 7/8	-	-	-	-	082074	0.6
1	1.90	1.90	23/32	1 3/16	15/32	1 7/8	082075	082076	082077	082078	-	0.9

Bore Range

Table NO.1

Bushing	Bore Range
G	3/8" - 1"
H	3/8 - 1 1/2
P1	1/2 - 1 3/4
Q1	3/4 - 2 11/16

Standard Keyseats

Table NO.2

Bore Range	Keyseat	Bore Range	Keyseat
3/8 or 7/16	none	1 5/16 or 1 3/8	5/16 x 5/32
1/2 or 9/16	1/8 x 1/16	1 7/16 - 1 3/4	3/8 x 3/16
5/8 - 7/8	3/16 x 3/32	1 13/16 - 2 1/4	1/2 x 1/4
15/16 - 1 1/4	1/4 x 1/8	2 5/16 - 2 11/16	5/8 x 5/16

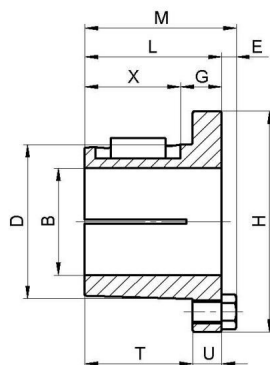
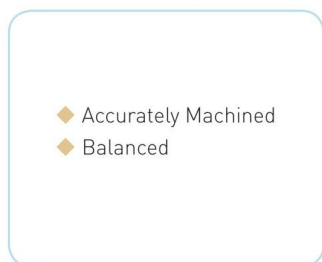
1 3/8"bore bushings also available with 3/8"x3/16" Keyseat.

Table No.3

Specifications—Stock "J" Sheaves

Part No.	Bushing	Type	DIAMETERS			Dimensions									Wt. Less Bush.
			O.D	P.D	I.D	O.L	F	L	P	C	H	G	X	E	
6 GROOVES															
6J20G	G	3	2.00	2.00"	-	1 7/8"	1 1/4"	1"	7/16"	11/16"	2"	-	-	3/16"	0.8
6J21G	G	4	2.12	2.12	-	1 3/8	3/4	1	7/16	3/16	2	-	-	3/16	0.7
6J22G	G	4	2.24	2.24	-	1 3/8	3/4	1	7/16	3/16	2	-	-	3/16	0.8
6J23G	G	4	2.36	2.36	-	1 3/8	3/4	1	7/16	3/16	2	-	-	3/16	0.9
6J25G	G	6	2.50	2.50	2 1/16"	1 1/4	3/4	1	5/16	1/16	2	7/16"	5/8"	3/16	0.7
6J26G	G	6	2.65	2.65	2 1/8	1 1/4	3/4	1	5/16	1/16	2	7/16	5/8	3/16	0.8
6J28G	G	6	2.80	2.80	2 1/4	1 1/4	3/4	1	5/16	1/16	2	7/16	5/8	3/16	0.9
6J30H	H	5	3.00	3.00	-	1 1/2	3/4	1 1/4	9/16	1/16	2 1/2	7/16	7/8	3/16	1.2
6J31H	H	5	3.15	3.15	-	1 1/2	3/4	1 1/4	9/16	1/16	2 1/2	7/16	7/8	3/16	1.9
6J33H	H	5	3.35	3.35	-	1 1/2	3/4	1 1/4	9/16	1/16	2 1/2	7/16	7/8	3/16	2.1
6J45P1	P1	7	4.50	4.50	-	2 3/16	3/4	1 15/16	1 3/16	-	3	5/8	1 5/16	1/4	3.1
6J60P1	P1	10-Sol.	6.00	6.00	5 1/4	2 3/16	3/4	1 15/16	2 9/32	9/32	3	5/8	1 5/16	1/4	4.7
6J80P1	P1	10-Sol.	8.00	8.00	7	2 3/16	3/4	1 15/16	2 9/32	9/32	3	5/8	1 5/16	1/4	6.6
6J106P1	P1	11-Arm	10.60	10.60	9 7/16	2 3/16	3/4	1 15/16	2 9/32	9/32	3	5/8	1 5/16	1/4	9.3
6J140Q1	Q1	11-Arm	14.00	14.00	12 3/16	2 25/32	3/4	2 1/2	1 1/4	1/2	4 1/8	3/4	1 3/4	9/32	13.6
6J190Q1	Q1	11-Arm	19.00	19.00	18 1/4	2 25/32	3/4	2 1/2	1 1/4	1/2	4 1/8	3/4	1 3/4	9/32	19.8
10 GROOVES															
10J20G	G	3	2.00"	2.00"	-	2 1/4"	1 5/8"	1"	7/16"	1 1/16"	2"	-	-	3/16"	1.0
10J21G	G	4	2.12	2.12	-	1 3/4	1 1/8	1	7/16	9/16	2	-	-	3/16	0.8
10J22G	G	4	2.24	2.24	-	1 3/4	1 1/8	1	7/16	9/16	2	-	-	3/16	0.9
10J23G	G	4	2.36	2.36	-	1 3/4	1 1/8	1	7/16	9/16	2	-	-	3/16	1.0
10J25G	G	6	2.50	2.50	2 1/16"	1 5/16	1 1/8	1	0	1/8	2	7/16"	11/16"	3/16	0.9
10J26G	G	6	2.65	2.65	2 1/8	1 5/16	1 1/8	1	0	1/8	2	7/16	11/16	3/16	1.1
10J28G	G	6	2.80	2.80	2 1/4	1 5/16	1 1/8	1	0	1/8	2	7/16	11/16	3/16	1.3
10J30H	H	6	3.00	3.00	2 9/16	1 1/2	1 1/8	1 1/4	3/16	1/16	2 1/2	7/16	7/8	3/16	1.5
10J31H	H	6	3.15	3.15	2 5/8	1 1/2	1 1/8	1 1/4	3/16	1/16	2 1/2	7/16	7/8	3/16	1.6
10J33P1	P1	7	3.35	3.35	-	2 3/16	1 1/8	1 15/16	13/16	-	3	5/8	1 5/16	1/4	1.9
10J45P1	P1	7	4.50	4.50	-	2 3/16	1 1/8	1 15/16	13/16	-	3	5/8	1 5/16	1/4	4.0
10J60P1	P1	10-Sol.	6.00	6.00	5 1/4	2 3/16	1 1/8	1 15/16	23/32	3/32	3	5/8	1 5/16	1/4	5.4
10J80P1	P1	10-Sol.	8.00	8.00	7	2 3/16	1 1/8	1 15/16	23/32	3/32	3	5/8	1 5/16	1/4	11.8
10J106Q1	Q1	11-Arm	10.60	10.60	9 7/16	2 25/32	1 1/8	2 1/2	1 1/16	5/16	4 1/8	3/4	1 3/4	9/32	13.1
10J140Q1	Q1	11-Arm	14.00	14.00	12 3/16	2 25/32	1 1/8	2 1/2	1 1/16	5/16	4 1/8	3/4	1 3/4	9/32	16.8
10J190Q1	Q1	11-Arm	19.00	19.00	18 1/4	2 25/32	1 1/8	2 1/2	1 1/16	5/16	4 1/8	3/4	1 3/4	9/32	22.0
16 GROOVES															
16J25G	G	6	2.50"	2.50"	2 1/16"	1 27/32"	1 21/32"	1"	0	21/32	2"	7/16"	1 7/32"	3/16"	1.5
16J26G	G	6	2.65	2.65	2 1/8	1 27/32	1 21/32	1	0	21/32	2	7/16	1 7/32	3/16	1.8
16J28G	G	6	2.80	2.80	2 1/4	1 27/32	1 21/32	1	0	21/32	2	7/16	1 7/32	3/16	2.0
16J30H	H	6	3.00	3.00	2 9/16	1 27/32	1 21/32	1 1/4	0	13/32	2 1/2	7/16	1 7/32	3/16	2.0
16J31H	H	6	3.15	3.15	2 5/8	1 27/32	1 21/32	1 1/4	0	13/32	2 1/2	7/16	1 7/32	3/16	2.3
16J33P1	P1	8	3.35	3.35	2 13/16	2 17/32	1 21/32	1 15/16	5/8"	11/32	3	-	1 5/16	1/4	2.5
16J45P1	P1	9	4.50	4.50	3 3/4	2 3/16	1 21/32	1 15/16	9/32	0	3	5/8	1 5/16	1/4	5.2
16J60P1	P1	12-Sol.	6.00	6.00	5 1/4	2 23/64	1 21/32	1 15/16	29/64	11/64	3	5/8	1 5/16	1/4	6.7
16J80Q1	Q1	11-Arm	8.00	8.00	7	2 25/32	1 21/32	2 1/2	51/64	3/64	4 1/8	3/4	1 3/4	9/32	13.5
16J106Q1	Q1	11-Arm	10.60	10.60	9 7/16	2 25/32	1 21/32	2 1/2	51/64	3/64	4 1/8	3/4	1 3/4	9/32	15.4
16J140Q1	Q1	11-Arm	14.00	14.00	12 3/16	2 25/32	1 21/32	2 1/2	51/64	3/64	4 1/8	3/4	1 3/4	9/32	18.7
16J190Q1	Q1	11-Arm	19.00	19.00	18 1/4	2 25/32	1 21/32	2 1/2	51/64	3/64	4 1/8	3/4	1 3/4	9/32	27.4

Poly-V Sheaves With Split Taper Bushings



Standard Keyseats
Table NO.1

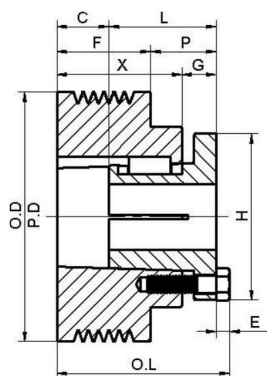
Bore Range	Keyseat
1/2" - 9/16"	1/8" x 1/16"
5/8 - 7/8	3/16 x 3/32
15/16 - 1 1/4	1/4 x 1/8
1 5/16 - 1 3/8	5/16 x 5/32
1 7/16 - 1 3/4	3/8 x 3/16
1 13/16 - 2 1/4	1/2 x 1/4
2 5/16 - 2 3/4	5/8 x 5/16
2 13/16 - 3 1/4	3/4 x 3/8
3 3/8 - 3 3/4	7/8 x 7/16

1 3/8" Bore Bushings also available with 3/8"x3/16" Keyseat.

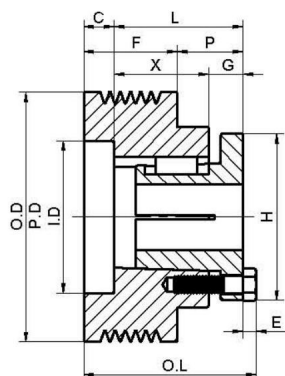
Table No.2 Bushing Dimensions

Part No.	Dimensions									Bore Range	Wt.Lbs
	M	L	G	X	E	T	U	D	H		
P1	2 3/16	1 15/16	5/8	1 5/16	1/4	1 17/32	13/32	1 15/16	3	1/2" - 1 3/4"	1.25
P2	3 3/16	2 15/16	5/8	2 5/16	1/4	2 17/32	13/32	1 15/16	3	3/4 - 1 3/4	4.50
Q1	2 25/32	2 1/2	3/4	1 3/4	9/32	1 31/32	17/32	2 7/8	4 1/8	3/4 - 2 11/16	3.5

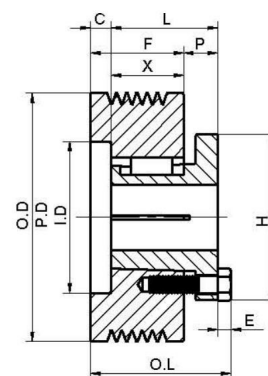
TYPE 2



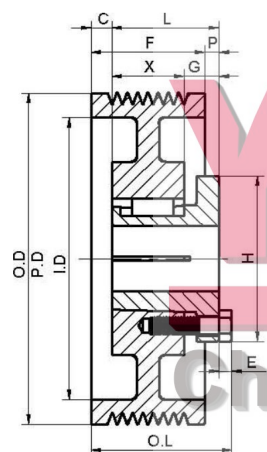
TYPE 3



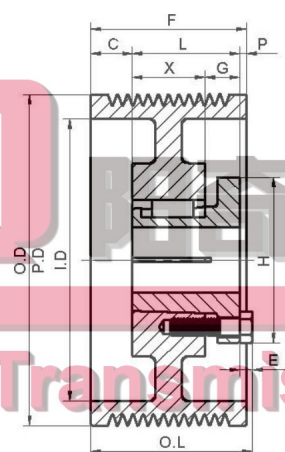
TYPE 5



TYPE 13



TYPE 15



TYPE 16

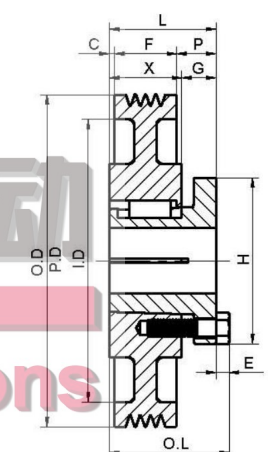




Table No.3

Specifications—Stock "L" Sheaves

Part No.	Bushing	Type	DIAMETERS			Dimensions								Wt. Less Bush.
			Pitch "L" Belts	Outside	Inside	O.L	L	P	C	H	G	X	E	
6 GROOVES, F = 1 11/16"														
6L30P1	P1	2	3.0"	3.00"	-	3 1/8"	1 15/16"	1 3/16"	15/16"	3"	5/8"	2 1/4"	1/4"	2.1
6L32P1	P1	2	3.2	3.20	-	3 1/8	1 15/16	1 3/16	15/16	3	5/8	2 1/4	1/4	2.8
6L34P1	P1	5	3.4	3.40	2 1/2"	2 9/16	1 15/16	5/8	3/8	3	-	1 5/16	1/4	2.1
6L36P1	P1	5	3.6	3.60	2 11/16	2 9/16	1 15/16	5/8	3/8	3	-	1 5/16	1/4	2.6
6L38P1	P1	5	3.8	3.80	2 7/8	2 9/16	1 15/16	5/8	3/8	3	-	1 5/16	1/4	2.8
6L40P1	P1	5	4.0	4.00	3 1/16	2 9/16	1 15/16	5/8	3/8	3	-	1 5/16	1/4	3.4
6L42P1	P1	13-Sol.	4.2	4.20	3 1/4	2 3/16	1 15/16	1/4	0	3	5/8	1 5/16	1/4	3.9
6L44P1	P1	13-Sol.	4.4	4.40	3 1/2	2 3/16	1 15/16	1/4	0	3	5/8	1 5/16	1/4	4.3
6L46P1	P1	13-Sol.	4.6	4.60	3 11/16	2 3/16	1 15/16	1/4	0	3	5/8	1 5/16	1/4	4.8
6L48P1	P1	13-Sol.	4.8	4.80	3 7/8	2 3/16	1 15/16	1/4	0	3	5/8	1 5/16	1/4	5.1
6L50P1	P1	13-Web	5.0	5.00	4 1/16	2 3/16	1 15/16	1/4	0	3	5/8	1 5/16	1/4	5.8
6L52P1	P1	13-Web	5.2	5.20	4 1/4	2 3/16	1 15/16	1/4	0	3	5/8	1 5/16	1/4	6.5
6L54P1	P1	13-Web	5.4	5.40	4 1/2	2 3/16	1 15/16	1/4	0	3	5/8	1 5/16	1/4	7.0
6L56P1	P1	13-Web	5.6	5.60	4 11/16	2 3/16	1 15/16	1/4	0	3	5/8	1 5/16	1/4	7.5
6L58P1	P1	13-Web	5.8	5.80	4 7/8	2 3/16	1 15/16	1/4	0	3	5/8	1 5/16	1/4	6.1
6L60P1	P1	13-Web	6.0	6.00	5 1/16	2 3/16	1 15/16	1/4	0	3	5/8	1 5/16	1/4	6.3
6L62P1	P1	13-Web	6.2	6.20	5 1/4	2 3/16	1 15/16	1/4	0	3	5/8	1 5/16	1/4	6.8
6L64P1	P1	13-Web	6.4	6.40	5 1/2	2 3/16	1 15/16	1/4	0	3	5/8	1 5/16	1/4	7.0
6L70Q1	Q1	16-Arm	7.0	7.00	5 9/16	2 25/32	2 1/2	25/32	1/32	4 1/8	3/4	1 3/4	9/32	9.9
6L74Q1	Q1	16-Arm	7.4	7.40	6	2 25/32	2 1/2	25/32	1/32	4 1/8	3/4	1 3/4	9/32	10.8
6L80Q1	Q1	16-Arm	8.0	8.00	6 9/16	2 25/32	2 1/2	25/32	1/32	4 1/8	3/4	1 3/4	9/32	12.0
6L90Q1	Q1	16-Arm	9.0	9.00	7 7/8	2 25/32	2 1/2	25/32	1/32	4 1/8	3/4	1 3/4	9/32	14.1
6L100Q1	Q1	16-Arm	10.0	10.00	7 13/16	2 25/32	2 1/2	25/32	1/32	4 1/8	3/4	1 3/4	9/32	16.1
6L120Q1	Q1	16-Arm	12.0	12.00	11	2 25/32	2 1/2	25/32	1/32	4 1/8	3/4	1 3/4	9/32	22.0
6L140Q1	Q1	16-Arm	14.0	14.00	12 1/8	2 25/32	2 1/2	25/32	1/32	4 1/8	3/4	1 3/4	9/32	27.8
6L160Q1	Q1	16-Arm	16.0	16.00	14 9/16	2 25/32	2 1/2	25/32	1/32	4 1/8	3/4	1 3/4	9/32	30.9
6L180Q1	Q1	16-Arm	18.0	18.00	16 7/8	2 25/32	2 1/2	25/32	1/32	4 1/8	3/4	1 3/4	9/32	36.9
6L200Q1	Q1	16-Arm	20.0	20.00	18 1/2	2 25/32	2 1/2	25/32	1/32	4 1/8	3/4	1 3/4	9/32	38.6
6L240Q1	Q1	16-Arm	24.0	24.00	22 3/16	2 25/32	2 1/2	25/32	1/32	4 1/8	3/4	1 3/4	9/32	47.5
6L300Q1	Q1	16-Arm	30.0	30.00	28 1/2	2 25/32	2 1/2	25/32	1/32	4 1/8	3/4	1 3/4	9/32	83.0
8 GROOVES, F = 2 1/16"														
8L30P1	P1	3	3.0"	3.00"	2 1/16"	3 1/2"	1 15/16"	1 3/16"	1 5/16"	3"	5/8"	2 5/16"	1/4"	2.5
8L32P1	P1	3	3.2	3.20	2 1/4	3 1/2	1 15/16	1 3/16	1 5/16	3	5/8	2 5/16	1/4	3.1
8L34P1	P1	5	3.4	3.40	2 1/2	2 15/16	1 15/16	5/8	3/4	3	-	1 5/16	1/4	2.5
8L36P1	P1	5	3.6	3.60	2 11/16	2 15/16	1 15/16	5/8	3/4	3	-	1 5/16	1/4	2.8
8L38P1	P1	5	3.8	3.80	2 7/8	2 15/16	1 15/16	5/8	3/4	3	-	1 5/16	1/4	3.4
8L40P1	P1	5	4.0	4.00	3 1/16	2 15/16	1 15/16	5/8	3/4	3	-	1 5/16	1/4	3.7
8L42P1	P1	13-Sol.	4.2	4.20	3 1/16	2 5/16	1 15/16	0	1/8	3	5/8	1 5/16	1/4	4.3
8L44P1	P1	13-Sol.	4.4	4.40	3 1/2	2 5/16	1 15/16	0	1/8	3	5/8	1 5/16	1/4	4.6
8L46P1	P1	13-Sol.	4.6	4.60	3 11/16	2 5/16	1 15/16	0	1/8	3	5/8	1 5/16	1/4	5.1
8L48P1	P1	13-Sol.	4.8	4.80	3 7/8	2 5/16	1 15/16	0	1/8	3	5/8	1 5/16	1/4	5.8
8L50P1	P1	13-Web	5.0	5.00	4 1/16	2 5/16	1 15/16	0	1/8	3	5/8	1 5/16	1/4	6.5
8L52P1	P1	13-Web	5.2	5.20	4 1/4	2 5/16	1 15/16	0	1/8	3	5/8	1 5/16	1/4	7.1
8L54P1	P1	13-Web	5.4	5.40	3 15/16	2 5/16	1 15/16	0	1/8	3	5/8	1 5/16	1/4	8.0
8L56P1	P1	13-Web	5.6	5.60	4 11/16	2 5/16	1 15/16	0	1/8	3	5/8	1 5/16	1/4	8.3
8L58P1	P1	13-Web	5.8	5.80	4 3/4	2 5/16	1 15/16	0	1/8	3	5/8	1 5/16	1/4	6.7
8L60P1	P1	13-Web	6.0	6.00	5 1/16	2 5/16	1 15/16	0	1/8	3	5/8	1 5/16	1/4	7.0
8L62P1	P1	13-Web	6.2	6.20	4 3/4	2 5/16	1 15/16	0	1/8	3	5/8	1 5/16	1/4	7.5
8L64P1	P1	13-Web	6.4	6.40	4 15/16	2 5/16	1 15/16	0	1/8	3	5/8	1 5/16	1/4	7.8
8L70Q1	Q1	13-Arm	7.0	7.00	5 13/16	2 15/16	2 1/2	19/32	5/32	4 1/8	3/4	1 3/4	9/32	10.8
8L74Q1	Q1	13-Arm	7.4	7.40	6	2 15/16	2 1/2	19/32	5/32	4 1/8	3/4	1 3/4	9/32	11.5
8L80Q1	Q1	13-Arm	8.0	8.00	6 15/16	2 15/16	2 1/2	19/32	5/32	4 1/8	3/4	1 3/4	9/32	13.9
8L90Q1	Q1	13-Arm	9.0	9.00	7 7/8	2 15/16	2 1/2	19/32	5/32	4 1/8	3/4	1 3/4	9/32	15.5
8L100Q1	Q1	13-Arm	10.0	10.00	7 13/16	2 15/16	2 1/2	19/32	5/32	4 1/8	3/4	1 3/4	9/32	18.0
8L120Q1	Q1	13-Arm	12.0	12.00	10 7/8	2 15/16	2 1/2	19/32	5/32	4 1/8	3/4	1 3/4	9/32	23.3
8L140Q1	Q1	13-Arm	14.0	14.00	12 1/8	2 15/16	2 1/2	19/32	5/32	4 1/8	3/4	1 3/4	9/32	31.6
8L160Q1	Q1	13-Arm	16.0	16.00	14 9/16	2 15/16	2 1/2	19/32	5/32	4 1/8	3/4	1 3/4	9/32	30.5
8L180Q1	Q1	13-Arm	18.0	18.00	17	2 15/16	2 1/2	19/32	5/32	4 1/8	3/4	1 3/4	9/32	40.9
8L200Q1	Q1	13-Arm	20.0	20.00	18 1/2	2 15/16	2 1/2	19/32	5/32	4 1/8	3/4	1 3/4	9/32	40.9
8L240Q1	Q1	13-Arm	24.0	24.00	23	2 15/16	2 1/2	19/32	5/32	4 1/8	3/4	1 3/4	9/32	54.0
8L300Q1	Q1	13-Arm	30.0	30.00	28 1/2	2 15/16	2 1/2	19/32	5/32	4 1/8	3/4	1 3/4	9/32	81.0

Table No.4

Specifications—Stock "L" Sheaves

Part No.	Bushing	Type	DIAMETERS			Dimensions								Wt. Less Bush.
			Pitch "L" Belts	Outside	Inside	O.L	L	P	C	H	G	X	E	
10 GROOVES,F = 2 7/16"														
10L30P2	P2	3	3.0"	3.00"	2 1/16"	3 7/8"	2 15/16"	1 3/16"	11/16"	3"	5/8"	2 5/16"	1/4"	2.8
10L32P2	P2	3	3.2	3.20	2 1/4	3 7/8	2 15/16	1 3/16	11/16	3	5/8	2 5/16	1/4	3.5
10L34P1	P1	5	3.4	3.40	2 1/2	3 5/16	1 15/16	5/8	1 1/8	3	-	1 5/16	1/4	2.8
10L36P1	P1	5	3.6	3.60	2 11/16	3 5/16	1 15/16	5/8	1 1/8	3	-	1 5/16	1/4	3.3
10L38P1	P1	5	3.8	3.80	2 1/4	3 5/16	1 15/16	5/8	1 1/8	3	-	1 5/16	1/4	3.8
10L40P1	P1	5	4.0	4.00	3 1/16	3 5/16	1 15/16	5/8	1 1/8	3	-	1 5/16	1/4	4.3
10L42P1	P1	13-Web	4.2	4.20	3 1/4	2 11/16	1 15/16	0	1/2	3	5/8	1 5/16	1/4	4.7
10L44P1	P1	13-Web	4.4	4.40	3 1/2	2 11/16	1 15/16	0	1/2	3	5/8	1 5/16	1/4	5.1
10L46P1	P1	13-Web	4.6	4.60	3 11/16	2 11/16	1 15/16	0	1/2	3	5/8	1 5/16	1/4	5.6
10L48P1	P1	13-Web	4.8	4.80	3 7/8	2 11/16	1 15/16	0	1/2	3	5/8	1 5/16	1/4	6.3
10L50P1	P1	13-Web	5.0	5.00	4 1/16	2 11/16	1 15/16	0	1/2	3	5/8	1 5/16	1/4	6.8
10L52P1	P1	13-Web	5.2	5.20	4 1/4	2 11/16	1 15/16	0	1/2	3	5/8	1 5/16	1/4	7.5
10L54Q1	Q1	13-Web	5.4	5.40	4 1/2	2 25/32	2 1/2	1/16	0	4 1/8	3/4	1 3/4	9/32	8.1
10L56Q1	Q1	13-Web	5.6	5.60	4 11/16	2 25/32	2 1/2	1/16	0	4 1/8	3/4	1 3/4	9/32	8.8
10L58Q1	Q1	13-Web	5.8	5.80	4 7/8	2 25/32	2 1/2	1/16	0	4 1/8	3/4	1 3/4	9/32	9.6
10L60Q1	Q1	13-Web	6.0	6.00	5 1/16	2 25/32	2 1/2	1/16	0	4 1/8	3/4	1 3/4	9/32	10.4
10L62Q1	Q1	13-Web	6.2	6.20	5 1/4	2 25/32	2 1/2	1/16	0	4 1/8	3/4	1 3/4	9/32	11.5
10L64Q1	Q1	13-Web	6.4	6.40	5 1/2	2 25/32	2 1/2	1/16	0	4 1/8	3/4	1 3/4	9/32	11.9
10L70Q1	Q1	13-Web	7.0	7.00	5 9/16	3 1/8	2 1/2	13/32	11/32	4 1/8	3/4	1 3/4	9/32	11.6
10L74Q1	Q1	13-Arm	7.4	7.40	6	3 1/8	2 1/2	13/32	11/32	4 1/8	3/4	1 3/4	9/32	12.3
10L80Q1	Q1	13-Arm	8.0	8.00	6 9/16	3 1/8	2 1/2	13/32	11/32	4 1/8	3/4	1 3/4	9/32	14.5
10L90Q1	Q1	13-Arm	9.0	9.00	7 7/8	3 1/8	2 1/2	13/32	11/32	4 1/8	3/4	1 3/4	9/32	16.1
10L100Q1	Q1	13-Arm	10.0	10.00	7 13/16	3 1/8	2 1/2	13/32	11/32	4 1/8	3/4	1 3/4	9/32	19.2
10L120Q1	Q1	13-Arm	12.0	12.00	10 15/16	3 1/8	2 1/2	13/32	11/32	4 1/8	3/4	1 3/4	9/32	24.3
10L140Q1	Q1	13-Arm	14.0	14.00	12 1/8	3 1/8	2 1/2	13/32	11/32	4 1/8	3/4	1 3/4	9/32	31.0
10L160Q1	Q1	13-Arm	16.0	16.00	14 9/16	3 1/8	2 1/2	13/32	11/32	4 1/8	3/4	1 3/4	9/32	34.6
10L180Q1	Q1	13-Arm	18.0	18.00	17	3 1/8	2 1/2	13/32	11/32	4 1/8	3/4	1 3/4	9/32	41.1
10L200Q1	Q1	13-Arm	20.0	20.00	18 1/2	3 1/8	2 1/2	13/32	11/32	4 1/8	3/4	1 3/4	9/32	45.3
10L240Q1	Q1	13-Arm	24.0	24.00	22 3/16	3 1/8	2 1/2	13/32	11/32	4 1/8	3/4	1 3/4	9/32	61.5
10L300Q1	Q1	13-Arm	30.0	30.00	28 1/2	3 1/8	2 1/2	13/32	11/32	4 1/8	3/4	1 3/4	9/32	84.0
12 GROOVES,F = 2 13/16"														
12L30P2	P2	3	3.00"	3.00"	2 1/16"	4 1/4"	2 15/16"	1 3/16"	1 1/16"	3"	5/8"	2 5/16"	1/4"	3.1
12L32P2	P2	3	3.20	3.20	2 1/4	4 1/4	2 15/16	1 3/16	1 1/16	3	5/8	2 5/16	1/4	3.6
12L34P1	P1	5	3.40	3.40	2 1/2	3 11/16	1 15/16	5/8	1 1/2	3	-	1 5/16	1/4	3.0
12L36P1	P1	5	3.60	3.60	2 11/16	3 11/16	1 15/16	5/8	1 1/2	3	-	1 5/16	1/4	3.6
12L38P1	P1	5	3.80	3.80	2 7/8	3 11/16	1 15/16	5/8	1 1/2	3	-	1 5/16	1/4	4.0
12L40P1	P1	5	4.00	4.00	3 1/16	3 11/16	1 15/16	5/8	1 1/2	3	-	1 5/16	1/4	4.7
12L42P1	P1	13-Web	4.20	4.20	3 1/4	3 1/16	1 15/16	0	7/8	3	5/8	1 5/16	1/4	5.0
12L44P1	P1	13-Web	4.40	4.40	3 1/2	3 1/16	1 15/16	0	7/8	3	5/8	1 5/16	1/4	5.5
12L46P1	P1	13-Web	4.60	4.60	3 11/16	3 1/16	1 15/16	0	7/8	3	5/8	1 5/16	1/4	6.0
12L48P1	P1	13-Web	4.80	4.80	3 7/8	3 1/16	1 15/16	0	7/8	3	5/8	1 5/16	1/4	6.9
12L50P1	P1	13-Web	5.00	5.00	4 1/16	3 1/16	1 15/16	0	7/8	3	5/8	1 5/16	1/4	7.5
12L52P1	P1	13-Web	5.20	5.20	4 1/4	3 1/16	1 15/16	0	7/8	3	5/8	1 5/16	1/4	7.7
12L54Q1	Q1	13-Web	5.40	5.40	4 1/2	3 3/32	2 1/2	0	5/16	4 1/8	3/4	1 3/4	9/32	8.6
12L56Q1	Q1	13-Web	5.60	5.60	4 11/16	3 3/32	2 1/2	0	5/16	4 1/8	3/4	1 3/4	9/32	9.3
12L58Q1	Q1	13-Web	5.80	5.80	4 7/8	3 3/32	2 1/2	0	5/16	4 1/8	3/4	1 3/4	9/32	10.3
12L60Q1	Q1	13-Web	6.00	6.00	5 1/16	3 3/32	2 1/2	0	5/16	4 1/8	3/4	1 3/4	9/32	11.1
12L62Q1	Q1	13-Web	6.20	6.20	5 1/4	3 3/32	2 1/2	0	5/16	4 1/8	3/4	1 3/4	9/32	11.9
12L64Q1	Q1	13-Web	6.40	6.40	5 1/2	3 3/32	2 1/2	0	5/16	4 1/8	3/4	1 3/4	9/32	12.9
12L70Q1	Q1	13-Web	7.00	7.00	5 9/16	3 5/16	2 1/2	7/32	17/32	4 1/8	3/4	1 3/4	9/32	12.4
12L74Q1	Q1	13-Web	7.40	7.40	6	3 5/16	2 1/2	7/32	17/32	4 1/8	3/4	1 3/4	9/32	13.0
12L80Q1	Q1	13-Arm	8.00	8.00	6 9/16	3 5/16	2 1/2	7/32	17/32	4 1/8	3/4	1 3/4	9/32	15.0
12L90Q1	Q1	13-Arm	9.00	9.00	7 7/8	3 5/16	2 1/2	7/32	17/32	4 1/8	3/4	1 3/4	9/32	17.0
12L100Q1	Q1	13-Arm	10.00	10.00	7 13/16	3 5/16	2 1/2	7/32	17/32	4 1/8	3/4	1 3/4	9/32	20.2
12L120Q1	Q1	13-Arm	12.00	12.00	10 15/16	3 5/16	2 1/2	7/32	17/32	4 1/8	3/4	1 3/4	9/32	27.4
12L140Q1	Q1	13-Arm	14.00	14.00	12 1/8	3 5/16	2 1/2	7/32	17/32	4 1/8	3/4	1 3/4	9/32	32.9
12L160Q1	Q1	13-Arm	16.00	16.00	14 9/16	3 5/16	2 1/2	7/32	17/32	4 1/8	3/4	1 3/4	9/32	32.5
12L180Q1	Q1	13-Arm	18.00	18.00	17	3 5/16	2 1/2	7/32	17/32	4 1/8	3/4	1 3/4	9/32	42.9
12L200Q1	Q1	13-Arm	20.00	20.00	18 1/2	3 5/16	2 1/2	7/32	17/32	4 1/8	3/4	1 3/4	9/32	46.5
12L240Q1	Q1	13-Arm	24.00	24.00	22 3/16	3 5/16	2 1/2	7/32	17/32	4 1/8	3/4	1 3/4	9/32	60.0
12L300Q1	Q1	13-Arm	30.00	30.00	28 1/2	3 5/16	2 1/2	7/32	17/32	4 1/8	3/4	1 3/4	9/32	93.0