

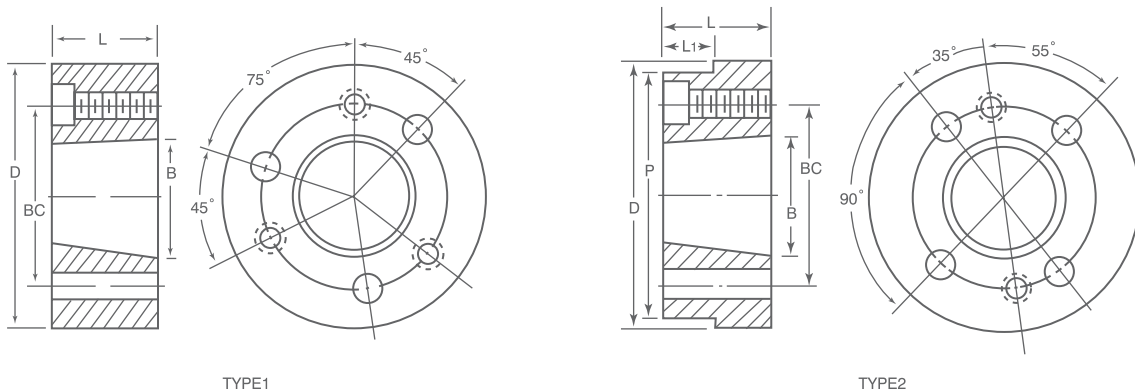
**T<sub>aper</sub>  
B<sub>ore</sub>** **Bolt-on-hubs**

**QTL**



**QTL WELD-ON HUBS**

QTL weld-on hubs are suitable in many applications, such as welding to steel plate wheels. Weld-on hubs are made of steel. Drilled, tapered and taper bored to receive QTL bushing



**QTL TYPE 1 AND TYPE 2 WELD- ON HUBS**

Catalog Number	Dimensions-Inches						Type Drilling BC	Torque Transmitted Bolt Stress in Pounds Per Sq.In			Weight Pounds
	D*	L	B	P+	L1	BC		6.000	9.000	12.000	
SH-A	3.000	13/16	1.871	—	—	2 1/4	1	950	1,425	1,900	1
SDS-A	3.500	3/4	2.188	—	—	2 11/16	1	1,130	1,695	2,260	1.30
SK-A	4.375	1 1/4	2.813	—	—	3 5/16	1	2,400	3,600	4,800	3
SF-A	5.000	1 1/4	3.125	—	—	3 7/8	1	4,060	6,090	8,120	4
E-A	6.250	1 5/8	3.832	—	—	5	1	9,240	13,860	18,480	9
F-A	7.000	2 1/2	4.437	—	—	5 5/8	1	13,960	20,940	27,920	16
J-A	7.750	3 3/16	5.140	—	—	6 1/4	1	19,550	29,325	39,100	25
M-A	9.500	5 3/16	6.494	9.250	3 9/16	7 7/8	2	49,000	73,500	98,000	50
N-A	10.500	6 1/4	6.990	10.250	4 1/2	8 1/2	2	73,200	109,800	146,400	75

\*Tolerance of "D" - "SH" thru "J" = (+.000 - .002)

+Tolerance of "P" - "M" and "N" = (+.000 - .003)