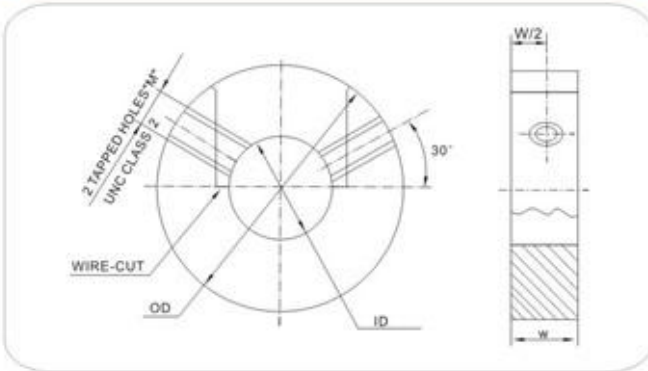
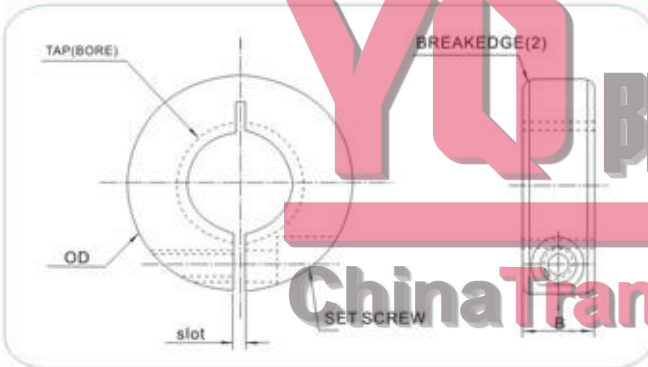


DIMENSIONS OF "S" TYPE SPLIT COLLARS



Part No.	ID	OD	W	M
SC1000	1	2.37	.625	5/16
SC1125	1 1/8	2.62	.625	5/16
SC1187	1 3/16	2.62	.750	3/8
SC1250	1 1/4	2.87	.750	3/8
Sc1312	1 5/16	2.87	.750	3/8
SC1375	1 3/8	2.87	.750	3/8
SC1437	1 7/16	2.87	.750	3/8
SC1500	1 1/2	3.12	.750	3/8
SC1687	1 11/16	3.37	.812	3/8
SC1750	1 3/4	3.62	1.000	1/2
SC1937	1 15/16	3.87	1.000	1/2
SC2000	2	4.12	1.000	1/2
SC2187	2 3/16	4.12	1.000	1/2
SC2437	2 7/16	4.62	1.000	1/2
SC2687	2 11/16	4.87	1.125	1/2
SC2937	2 15/16	5.12	1.125	1/2
SC3437	3 7/16	5.62	1.250	1/2
SC3937	3 15/16	6.37	1.250	5/8
SC4437	4 7/16	6.87	1.375	5/8
SC4937	4 15/16	7.87	1.375	5/8
SC5437	5 7/16	8.37	1.375	5/8
SC5937	5 15/16	9.12	1.375	5/8

THREADED SHAFT COLLARS (SINGLE SPLIT)



Part No.	Bore	Outside Dia.	B	Set Screw	Wt. lbs.
SCT1-0250-20-BO	1/4-20	11/16	5/16	4-40	0.0260
SCT1-0250-28-BO	1/4-28	11/16	5/16	4-40	0.0256
SCT1-0312-18-BO	5/16-18	11/16	5/16	4-40	0.0250
SCT1-0312-24-BO	5/16-24	11/16	5/16	4-40	0.0031
SCT1-0375-16-BO	3/8-16	7/8	3/8	6-32	0.0029
SCT1-0375-24-BO	3/8-24	7/8	3/8	6-32	0.0055
SCT1-0500-13-BO	1/2-13	1-1/8	13/32	8-32	0.0055
SCT1-0500-20-BO	1/2-20	1-1/8	13/32	8-32	
SCT1-0625-11-BO	5/8-11	1-5/16	7/16	10-32	0.0078
SCT1-0625-18-BO	5/8-18	1-5/16	7/16	10-32	0.0113
SCT1-0750-10-BO	3/4-10	1-1/2	1/2	1/4-28	0.0109
SCT1-0750-16-BO	3/4-15	1-1/2	1/2	1/4-28	0.2000
SCT1-0875-09-BO	7/8-9	1-5/8	1/2	1/4-28	0.1950
SCT1-0875-14-BO	7/8-14	1-5/8	1/2	1/4-28	0.2150
SCT1-1000-08-BO	1-8	1-3/4	1/2	1/4-28	0.2188
SCT1-1000-14-BO	1-14	1-3/4	1/2	1/4-28	0.2988
SCT1-1250-07-BO	1 1/4-7	2-1/16	1/2	1/4-28	0.2938
SCT1-1250-12-BO	1 1/4-12	2-1/16	1/2	1/4-28	0.2875
SCT1-1500-08-BO	1 1/2-6	2-3/8	9/16	1/4-28	0.4188
SCT1-1500-12-BO	1 1/2-12	2-3/8	9/16	1/4-28	0.4125
SCT1-2000-12-BO	2-12	3	11/16	5/16-24	0.7375