



# SCISSOR LIFT TYRES

## Application

- ▶ Scissor Lift    ▶ Articulating Booms
- ▶ Vertical Masts
- ▶ Push Around

## Features

- ▶ Environment Friendly    ▶ Low Rolling Resistance
- ▶ Maintenance-Free    ▶ Long Life
- ▶ Firmly Bonded



SC-LUG1



SC-LUG2



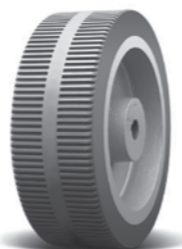
SC-LUG3



SC-LUG4



SC-RB1



SC-RB2



SC-RB3



SC-RB4



SC-SM

SIZE		PATTERN	OD(mm)	SW (mm)	OTHER INDUSTRIAL VEHICLES 10KM/H
INCH	MM				
10x3	256x79	SC-RB1	256	79	425
10x4	256x102	SC-RB1	256	102	630
12x4(With brake)	305X100	SC-LUG2	310	100	680
12x4(W/O brake)	305X100	SC-LUG2	310	100	680
12x4.50	310x115x237	SC-LUG2	310	115	820
12x4.50	310x115x237	SC-LUG3	310	115	820
12.5x4.25	320x108x246	SC-LUG3	320	108	810
14x4.5	358x114x239	SC-LUG1	358	114	920
15x5	384x127	SC-LUG3	384	127	1095
16x5X12(with brake)	406x125	SC-RB1	406	125	1265
16x5X12(without brake)	406x125	SC-RB1	406	125	1265
22x7x17 3/4	559x178x450.8	SC-LUG4	561	178	2270
12 3/4x4	323x100	SC-LUG1	323	100	635
16X5	406x125	SC-RB1	406	125	1265
16X5	406x127	SC-LUG1	406	127	1265
2.00-8(12x4)	--	SC-SM	318/310	103/100	620
2.00-8(12x4)	--	SC-RB1	318/310	103/100	620
2.00-8(12x4)	--	SC-LUG2	318/310	103/100	620
3.00-5	--	SC-LUG1	268/250	77/72	335
3.00-5	--	SC-RB1	268/250	77/72	335
23 1/2x71/2	600x190	SC-RB1	604	190	2670
-	640x170x560	SC-SM	640	170	2340
-	630x203x508	SC-SM	630	203	3110

Applications to Genie, JLG, Skyjack, Haulotte, Dingli scissor lift and more.